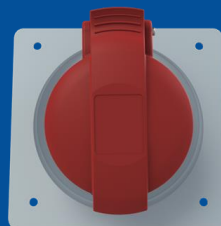


432RAU6

Panel mounted socket

2CMA193283R1000



Panel mounted socket, earthing sleeve position 6h, rated current 32A, IP44 splashproof, unified flange, angled, 3-poles+neutral+earth, frequency 50-60 Hz, color code Red

GENERAL

Product Name	Panel mounted socket
Product ID	2CMA193283R1000
Function	Panel mounted socket
EAN	7392696932837
Catalog Description	Socket-outlet, panel mounting, 6h, 32A, IP44, unified flange, angled, 3P+N+E
Country of Origin	Czech Republic (CZ)
E-Number Finland	2421276
E-Number Norway	1547453
E-Number Sweden	E2416670
Standards	IEC 60309-1, -2
RoHS Status	Following EU Directive 2011/65/EU

DIMENSIONS

Product Net Width	110 millimetre
Product Net Height	110 millimetre
Product Net Length	117 millimetre
Product Net Depth	117 millimetre
Product Net Weight	0.28 kilogram

TECHNICAL

Product Main Type	ERAU
Color	Red
Number of Poles	5
Clock Position	6Hour
Rated Current	32 ampere
Rated Voltage	200/346 ... 240/415 volt
Frequency	50 hertz 60 hertz
Degree of Protection	IP44
Cable Cross-Section	2.5...10 mm ²
Housing Material	Plastic (PA)
Plug Angle	Angled
Product Group	Easy&Safe

PACKAGING

Package Width	188 millimetre
Package Height	428 millimetre
Package Gross Weight	2.8 kilogram
Package Length	175 millimetre
Package Units	box 10 piece

X-ON Electronics

Largest Supplier of Electrical and Electronic Components

Click to view similar products for [Heavy Duty Power Connectors](#) category:

Click to view products by [Amphenol](#) manufacturer:

Other Similar products are found below :

[6646058-2](#) [6646137-1](#) [6646138-1](#) [6646940-1](#) [6651091-1](#) [6651525-1](#) [6651529-1](#) [696475-1](#) [702-32-01109](#) [73080255059](#) [7310205040001](#)
[765-16-0080B](#) [765-18-0080D](#) [MHDM35-15-K](#) [902-77-02113](#) [PS00/A0620/6300](#) [PS25/A0420/63](#) [AN0024023](#) [154-42B7WM250](#) [1643543-1](#)
[1766966-1](#) [1791340000](#) [NLDFT-3-BL-L-S120-M40A](#) [1926015-1](#) [NPS-3-BL-T6](#) [2-1589900-8](#) [9300480317](#) [294-0091-01100](#) [295-0068-](#)
[01100](#) [296-0040-01100](#) [1-6609148-0](#) [A32595-0049](#) [1766249-1](#) [19000005132](#) [1-966831-8](#) [AN0024202](#) [AN0264023](#) [279-0841-10100A](#) [281-](#)
[0334-00100A](#) [RMSB4](#) [419-2083-301](#) [LCDX4/0-14B-X](#) [075-8519-001](#) [078238-1613](#) [07.470.3256.0](#) [09000005288](#) [09140240311](#)
[09300240303](#) [09370009946](#) [09300160318ML](#)