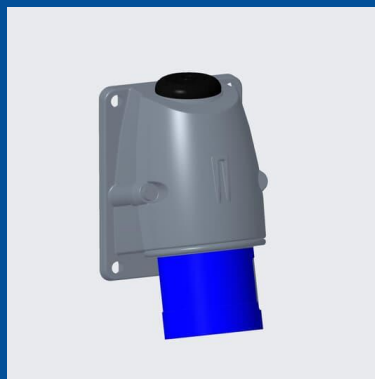


316BS9

Wall mounted inlet

2CMA193300R1000



Wall mounted inlet, earthing sleeve position 9h, rated current 16A, IP44 splashproof, 3-poles+earth, frequency 50-60 Hz, color code Blue

GENERAL

Product Name	Wall mounted inlet
Product ID	2CMA193300R1000
Function	Wall mounted inlet
EAN	73926969301
Catalog Description	Surface inlet, 9h, 16A, IP44, 3P+E
Country of Origin	Czech Republic (CZ)
E-Number Finland	2417170
E-Number Norway	2417170
E-Number Sweden	E2417170
Standards	IEC 60309-1, -2
RoHS Status	Following EU Directive 2011/65/EU

TECHNICAL

Product Main Type	EBS
Color	Blue
Number of Poles	4
Clock Position	9Hour
Rated Current	16 ampere
Rated Voltage	200 ... 250 volt
Frequency	50 hertz 60 hertz
Degree of Protection	IP44
Cable Cross-Section	1.5...4 mm ²
Housing Material	Plastic (PA)
Plug Angle	Angled
Product Group	Easy&Safe

DIMENSIONS

Product Net Width	78 millimetre
Product Net Height	68 millimetre
Product Net Length	118 millimetre
Product Net Depth	118 millimetre
Product Net Weight	0.19 kilogram

PACKAGING

Package Width	154 millimetre
Package Height	378 millimetre
Package Gross Weight	1.9 kilogram
Package Length	182 millimetre
Package Units	box 10 piece

X-ON Electronics

Largest Supplier of Electrical and Electronic Components

Click to view similar products for [Heavy Duty Power Connectors](#) category:

Click to view products by [Amphenol](#) manufacturer:

Other Similar products are found below :

[6646058-2](#) [6646137-1](#) [6646138-1](#) [6646940-1](#) [6651091-1](#) [6651525-1](#) [6651529-1](#) [696475-1](#) [702-32-01109](#) [73080255059](#) [73080965046](#)
[7310205040001](#) [765-16-0080B](#) [765-18-0080D](#) [MHDM35-15-K](#) [902-77-02113](#) [PS00/A0620/6300](#) [AN0024023](#) [154-42B7WM250](#) [1643543-1](#)
[1766966-1](#) [1791340000](#) [NLDFT-3-BL-L-S120-M40A](#) [1926015-1](#) [NPS-3-BL-T6](#) [2-1589900-8](#) [9300480317](#) [294-0091-01100](#) [295-0068-](#)
[01100](#) [296-0040-01100](#) [1-6609148-0](#) [A32595-0049](#) [1766249-1](#) [19000005132](#) [1-966831-8](#) [AN0024202](#) [AN0264023](#) [279-0841-10100A](#) [281-](#)
[0334-00100A](#) [RMSB4](#) [419-2083-301](#) [LCDX4/0-14B-X](#) [075-8519-001](#) [078238-1613](#) [07.470.3256.0](#) [09000005288](#) [09140240311](#)
[09300240303](#) [09370009946](#) [09300160318ML](#)