



PULSE-NET® FEATURES

Specifically designed for Industrial, Commercial, Residential, and applications that could endure harsh environmental conditions.

Packaging (intuitive, compact, configurable)

- **Pulse-Lok®** auto-latch / quick release mechanism confirms continuity in critical surgical applications
- 14 standard color combinations
- Proprietary keying protects your single-use from being copied, or mated with the wrong connector
- Custom configurations including passive and active devices for coding or limiting catheter usage

Performance (for harsh environments)

- Water proof (IP-67 rated)
- Sterilizable
- Chemical resistant housing
- Up to 5,000 mating cycles (with std. Contacts)
- Factory terminated, overmolded cable assemblies for enhanced flex and stain relief

SPECIFICATIONS

Electrical (see below)

Connection Category: RJ-45
TIA/EIA Categories: 3, 5, 5e, & 6
Shielding: EMI/RFI optional

Material

Connector Housing: PBT
Strain Reliefs: Valox (PBT)
Coupler: Valox (PBT)
Housing Colors: Black, Gray, Red, Yellow, Green, Blue & White

Mechanical

Mating Cycles: 20K cycles max
Retention Force:

- Mated Connectors: 50 lbs. Minimum
- Cable to Connector: 50 lbs. Typical
- Backshell to Connector: 50 lbs. Minimum

Environmental

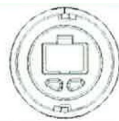
- Operating Temp: -20C to +105C**
- Moisture Resistance: to IP-67 (encapsulated)
- Sterilizable: gamma, EtO & Autoclave
- Chem. Resistance: common OR cleaning solvents

* post conditioning

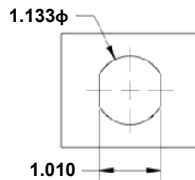
**Dependent on overmold material

TABLE A:

STANDARD CONTACT CONFIGURATIONS & SPECIFICATIONS



Standard RJ-45 Insert



Panel Cut-Out

Number of Poles	Max Wire Gauge	Operating Voltage Max	Operating Current Max (A)	Dielectric Withstanding Voltage
8	24/26	150VAC	1.5A @ 25C	1,000VAC

Insulation Resistance: 500 milliohms

Surge Test with Pulse of 10/1000 microsecond & 1000V-Peak

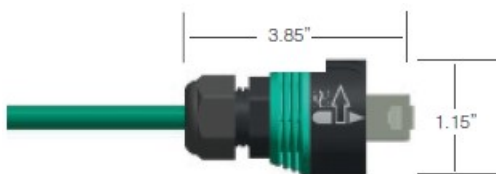
STANDARD HOUSING OPTIONS

Plug Housing (Flex Nut Strain Relief)



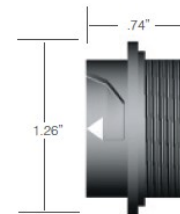
Assembled Kit, Cable Diameter Range = .160" to .310"

Plug Housing (Dome Nut Strain Relief)



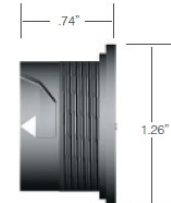
Assembled Kit, Cable Diameter Range = .160" to .310"

Receptacle Housing (Front Panel-Mount)



Panel-Mount Range = up to .185"

Receptacle Housing (Rear Panel-Mount)



Panel-Mount Range = up to .185"

Connector housings are illustrated in turquoise and black.
www.amphenolalden.com/configurator

Standard color is black on black. See our online configurator for color options at :
*All dimensions shown in inches except where indicated

For additional information about this, or any other Amphenol Alden product, please contact an Amphenol Alden specialist today.

Phone: 508-427-7000
Fax: 508-583-0164
www.amphenolalden.com

PULSE-NET® PLUG ASSEMBLIES

Wire Type	Strain Relief Type	TIA Category	RJ45 Non-Shield		RJ45 Shielded	
			Individual	Bulk	Individual	Bulk
Stranded	Customer Supplied	Cat 5e	361025	361027	361029	361031
Stranded	Dome	Cat 5e	361001	361003	361013	361015
Stranded	Flex	Cat 5e	361005	361007	361017	361019
Stranded	Dome	Cat 6	361033	361035		
Stranded	Flex	Cat 6	361037	361039		
Solid	Customer Supplied	Cat 5e	361026	361028	361030	361032
Solid	Dome	Cat 5e	361002	361004	361014	361016
Solid	Flex	Cat 5e	361006	361008	361018	361020
Solid	Dome	Cat 6	361034	361036		
Solid	Flex	Cat 6	361038	361040		
Customer Supplied	Dome	N/A	361009	361010	361021	361022
Customer Supplied	Flex	N/A	361011	361012	361023	361024

PULSE-NET® PANEL-MOUNT RECEPTACLES With Hex Nut

Termination Style	Strain Relief Type	TIA Category	Rear Panel-Mount		Front Panel-Mount	
			Individual	Bulk	Individual	Bulk
110 Punchdown Right Angle	Non-Shielded	Cat 5e	360001	360002	360025	360026
110 Punchdown Right Angle	Shielded	Cat 5e	360003	360004	360027	360028
110 Punchdown Straight	Non-Shielded	Cat 5e	360005	360006	360029	360030
110 Punchdown Straight	Shielded	Cat 5e	360007	360008	360031	360032
110 Punchdown Straight	Non-Shielded	Cat 6	360089	360090	360093	360094
110 Punchdown Straight	Shielded	Cat 6	360091	360092	360095	360096
In-Line Coupler Right Angle	Non-Shielded	Cat 3	360009	360010	360033	360034
In-Line Coupler Straight	Non-Shielded	Cat 5e	360011	360012	360035	360036
In-Line Coupler Straight	Shielded	Cat 5e	360013	360014	360037	360038
Customer Supplied	N/A	N/A	360015	360016	360039	360040
PCB Mount Straight	Non-Shielded	Cat 5	360017	360018		
PCB Mount Straight	Shielded	Cat 5	360019	360020		
Toolless Straight	Non-Shielded	Cat 5e	360021	360022	360041	360042
Toolless Straight	Shielded	Cat 5e	360023	360024	360043	360044

Note: Part numbers cover black housings in Key 1 configuration. For other color and housing options utilize the Amphenol Alden connector configurator located at www.amphenolalden.com/configurator

*Indicates RJ45 will be shipped assembled in the Pulse-Net receptacle housing. All other styles will not be assembled in housing for ease of termination at application.



Panel-Mount Receptacle

Sealing Cap with Tether



P/N 107832-01

Front Panel-Mount Receptacle

To install, slide last bead on chain through slot of mounting ring. Install first gasket onto housing, then the mounting ring, then the second gasket. Insert housing through panel and tighten nut.

Rear Panel-Mount Receptacle

To install, slide last bead on chain through slot of mounting ring. Place mounting ring between the panel and panel nut and tighten nut.

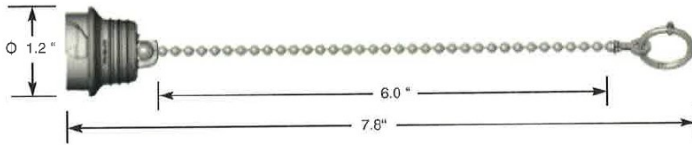
Sealing Cap



P/N 107448-01

In-Line Plug

Sealing Cap with Tether

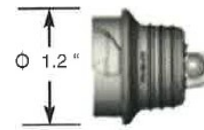


P/N 107304-01

Plug Sealing Cap

To install onto a cable assembly; open wire clip, place cable between the halves and close clip.

Sealing Cap



P/N 107288-01

X-ON Electronics

Largest Supplier of Electrical and Electronic Components

Click to view similar products for [Modular Connectors / Ethernet Connectors](#) category:

Click to view products by [Amphenol](#) manufacturer:

Other Similar products are found below :

[8949-H88/06BLKA/SN](#) [74441-0010/BKN](#) [MP1010RX-1000](#) [MP44RX-1000](#) [PHJ-4P4C-1-V-4](#) [PHP-6P6C-5](#) [GAX-3-66](#) [GAX-8-62](#) [GDCX-PA-66-50](#) [GDCX-PN-64](#) [GDCX-PN-66](#) [GDCX-PN-66-50](#) [GDLX-A-66](#) [GDLX-N-66](#) [GDLX-S-66](#) [GDLX-S-88K](#) [GDTX-S-88-50](#) [GDX-PA-1010](#) [GLX-N-1010M-BLK](#) [GLX-S-88M-BLK](#) [GMX-N-1010](#) [GMX-S-1010](#) [GMX-S-66](#) [GMX-SMT4-N-88](#) [GPX-2-64](#) [GSGX-N-2-88](#) [GSGX-N-4-88](#) [GSX-NS2-88-3.05-50](#) [PT-108A-8C-UL](#) [PT-J951-8C](#) [PTS-J531-8CS-50UL](#) [1-1775629-2](#) [A-2014-0-4](#) [GWLX-S-88-GR](#) [GWLX-S9-88-YG](#) [DC-1021-8-WH-6](#) [1300530003](#) [1324640-4](#) [RJ11FTVC2G](#) [RJ11FTVC2N](#) [RJFTVX2SA1G](#) [132764-001](#) [1413235](#) [MP88X-1000](#) [MPS88RX-5000](#) [MRJR-5481-0F2](#) [E5288-S000K3-L](#) [E5908-15A242-L](#) [155302-001](#) [AX100653](#)