

8

7

6

5

4

3

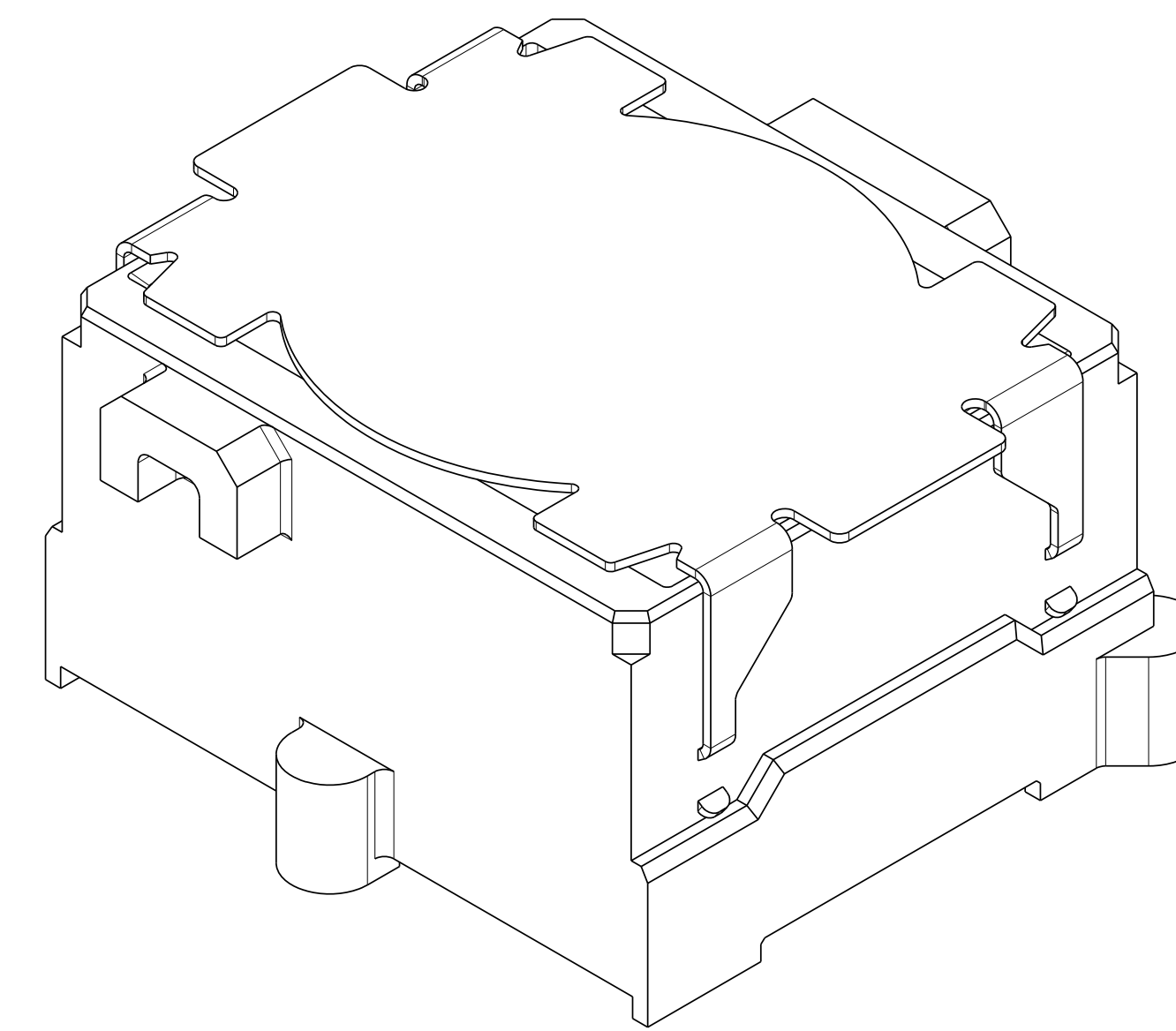
DRW NO. C-380-3334-500 SH 1 REV A

ZONE	REV	SCR NUMBER	DESCRIPTION	BY	DATE	APPROVED
ALL	A	DMAN-BW JP4Y.VER01	NEW RELEASE	D.MALOON	07/31/12	D.McNAMARA

PART NUMBER ①	DESCRIPTION
380-3334-X00	RECEPTACLE ASSY, 4 PAIR, 9 MM HIGH, 5 WAFERS, 100 OHMS W/LOSSY
380-3434-X00	RECEPTACLE ASSY, 4 PAIR, 9 MM HIGH, 5 WAFERS, 85 OHMS W/LOSSY
380-3534-X00	RECEPTACLE ASSY, 4 PAIR, 9 MM HIGH, 5 WAFERS, 100 OHMS NO LOSSY
380-3634-X00	RECEPTACLE ASSY, 4 PAIR, 9 MM HIGH, 5 WAFERS, 85 OHMS NO LOSSY

NOTES:

- ① ASSEMBLY PART NUMBER VARIES WITH PLATING OPTION AS FOLLOWS:  
FOR NI SULFAMATE UNDERPLATE, 8TH DIGIT OF P/N IS 2.  
FOR NANO NI UNDERPLATE, 8TH DIGIT OF P/N IS 4.
2. MAT'L:  
HOUSING/WAFERS - LCP.  
VACUUM CAP - SST.  
CONTACTS - HIGH PERFORMANCE COPPER ALLOY, PER MTS-506.
3. 0.71 DIA SOLDER SPHERES WILL NOT BE PERFECTLY SPHERICAL AFTER REFLOW ATTACHMENT.
- ④ HOLES RECOMMENDED FOR VISUAL INSPECTION OF CONNECTOR ALIGNMENT AFTER PLACEMENT AND BEFORE REFLOW.
- ⑤ SOLDER BALL PROTRUSION BELOW HOUSING.
- ⑥ SEE TECHNICAL BULLETIN TB-2241 FOR DETAILED SMT PROCESSING AND PCB FOOT PRINT RECOMMENDATIONS.
- ⑦ MAXIMUM CO-PLANARITY OF THE BALL FIELD.
- ⑧ MAXIMUM RADIAL TRUE POSITION OF ANY SOLDER BALL IN RELATION TO AN IDEAL BEST FIT GRID.
9. TOLERANCES DO NOT APPLY TO REFERENCE DIMENSIONS SHOWN IN "()" OR BASIC DIMENSIONS SHOWN IN "□".
10. REFER TO FILE 380-3X34-XX0.STP FOR SIMPLIFIED 3D MODEL OF ASSEMBLY.



ISOMETRIC VIEW  
SCALE 8/1

TOLERANCES	DESIGN 09/10/10	Amphenol TCS A Division of Amphenol Corporation 200 Innovative Way, Nashua, NH 03062 603.879.3000	
0.0	±0.25	DRAWN 03/20/11	TITLE RECEPTACLE ASSEMBLY, 5 WAFERS InfinX 4 PAIR, 9 MM HIGH
0.00	±0.13	D.MALOON	
0.000	± -	EHK 07/31/12	PART NO. SEE TABLE 1
ANGLES	± 3°	D.McNAMARA	
UNLESS OTHERWISE SPECIFIED DIMENSIONS ARE IN MM. DECIMAL MARKER IS A PERIOD		APVD 07/31/12	REV N/A
CUSTOMER USE DRAWING		DRAWING NO. C-380-3334-500	
		PART 01155-RECEP-ASSY-4X09X05-VC DRAWING C-380-3334-500	
CODE IDENT 31413		SIZE D	SHEET 1 OF 4

DRW NO. C-380-3334-500

SH 1 REV A

8

7

6

5

4

3

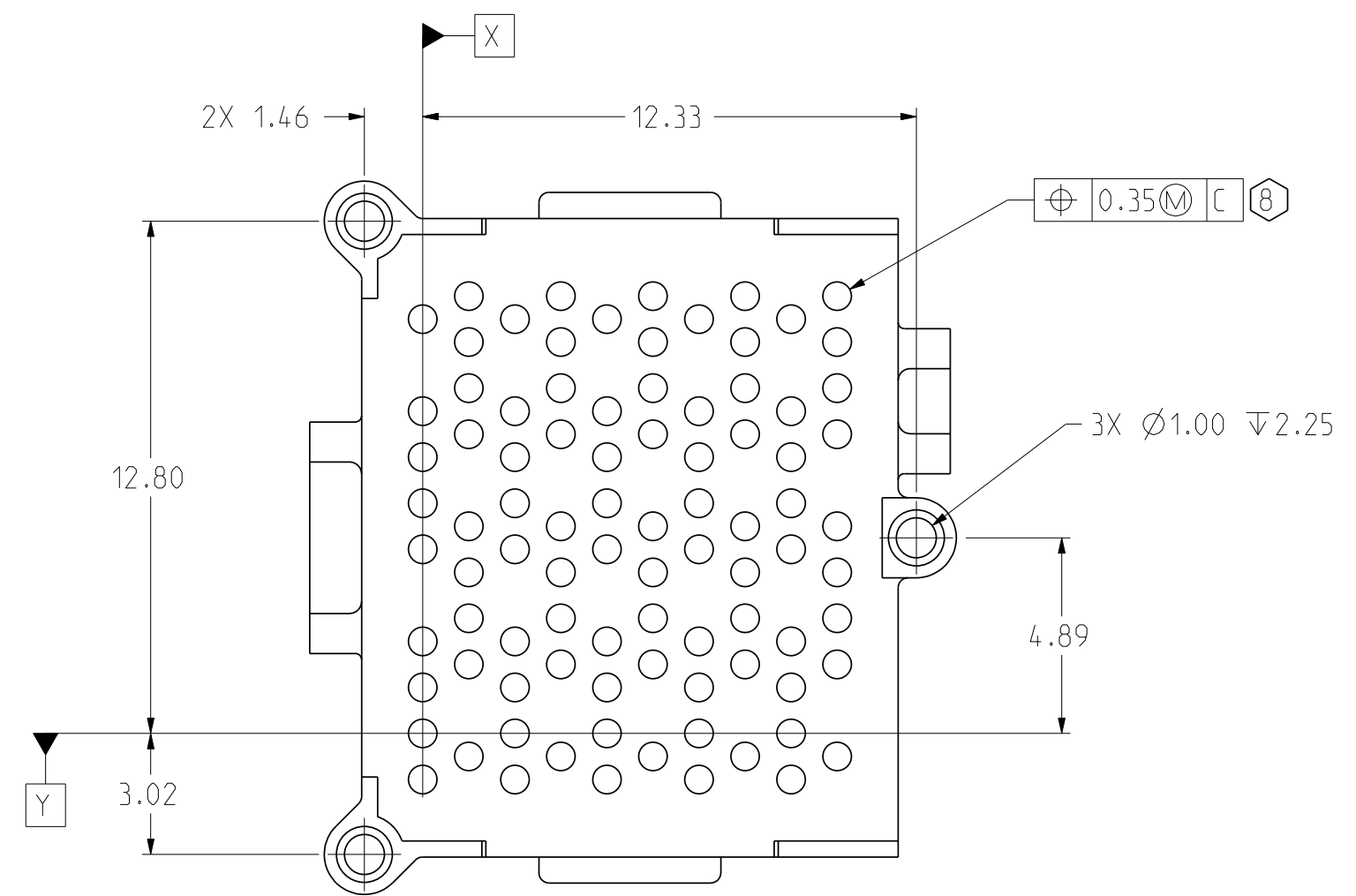
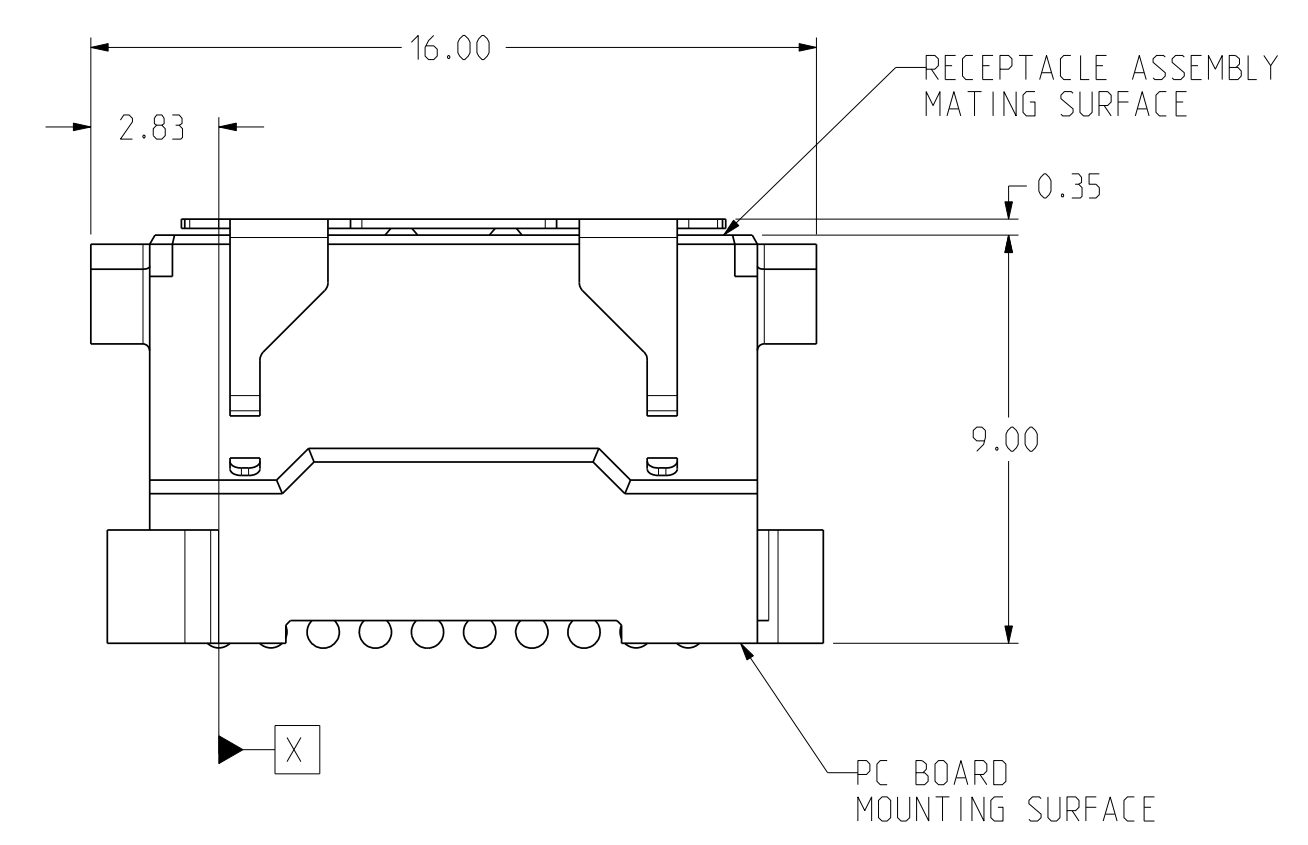
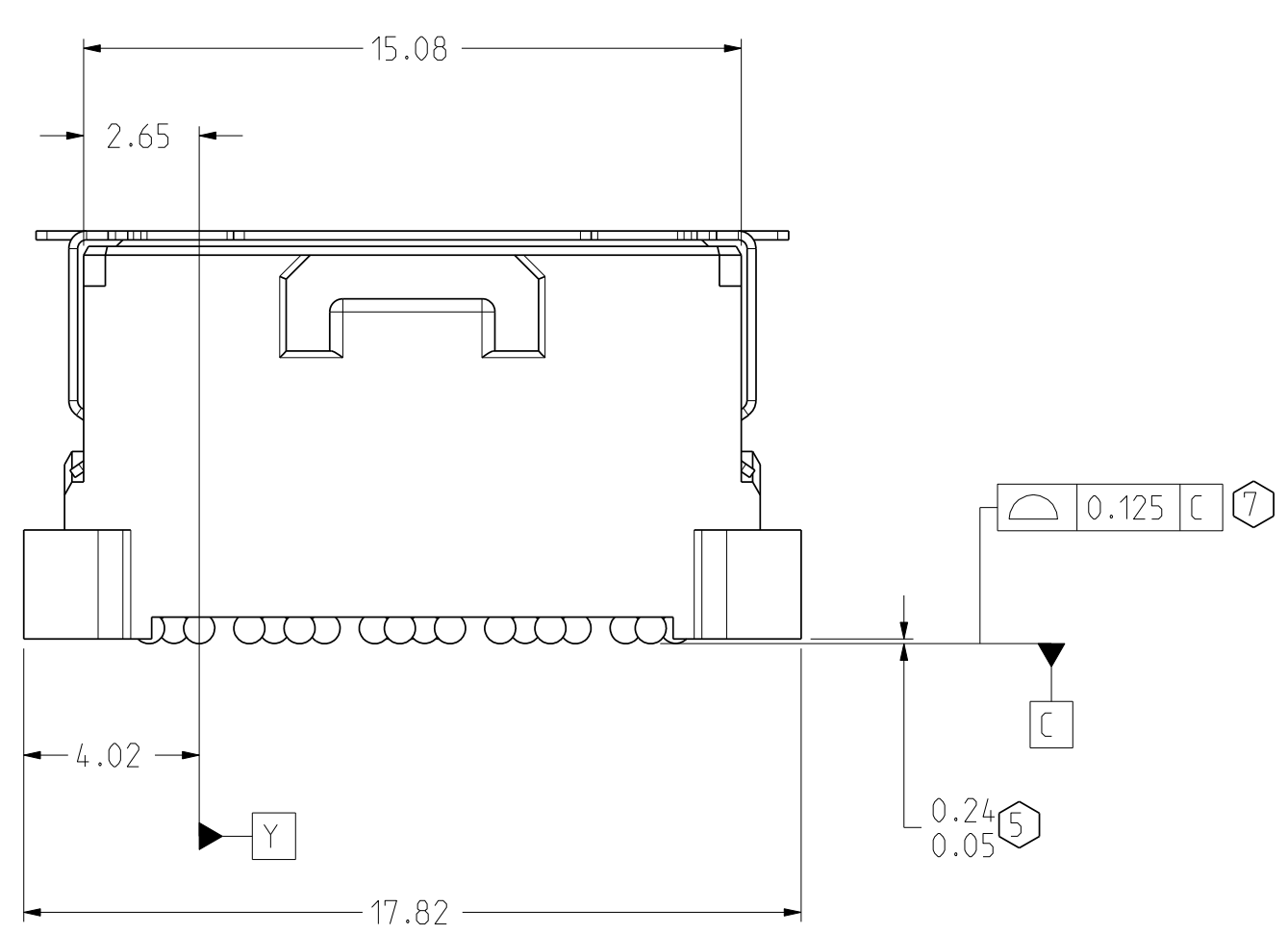
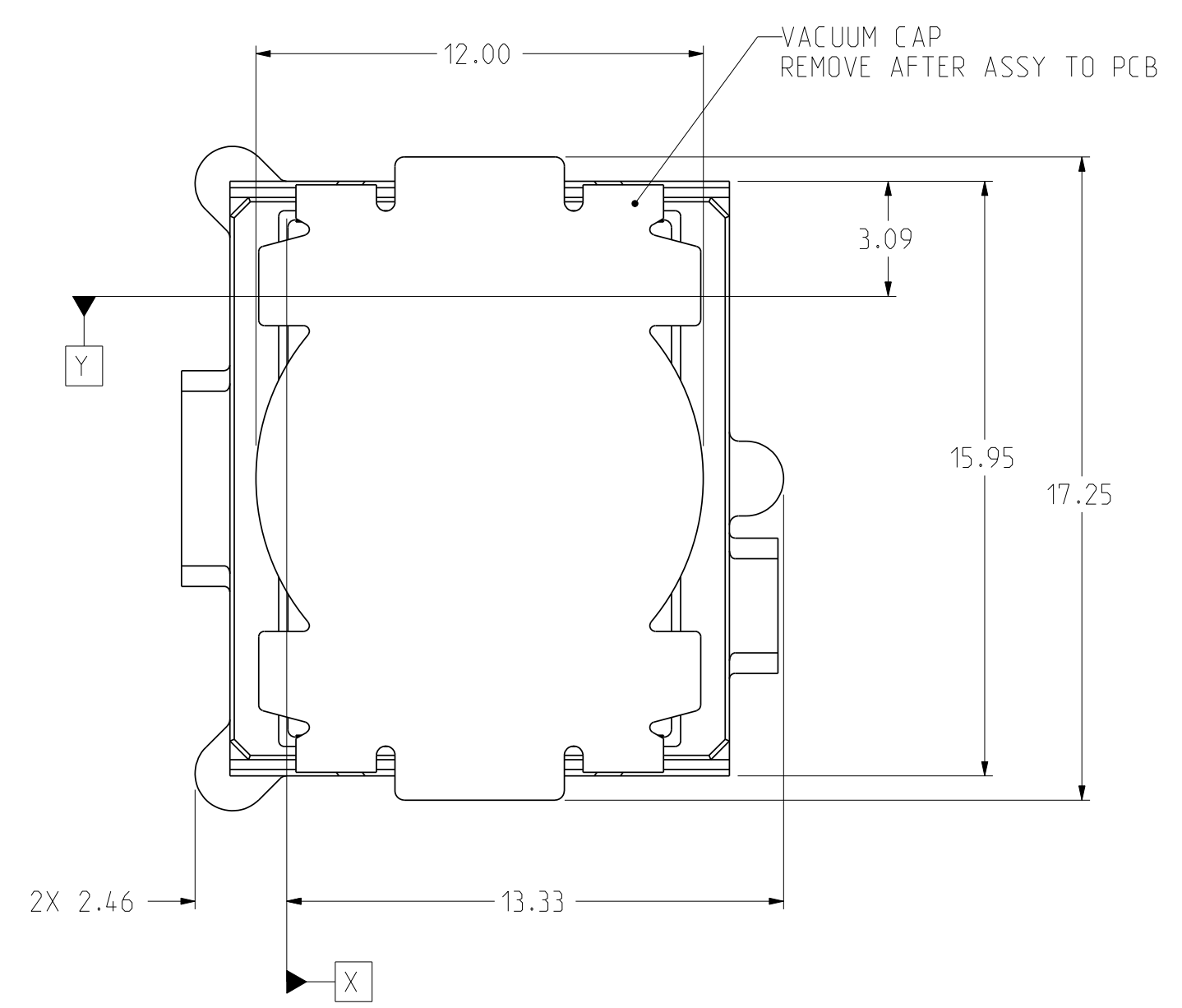
2

1

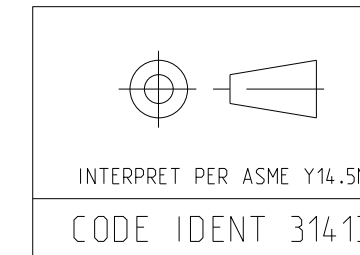
8 7 6 5 4 3

DRW NO. C-380-3334-500 SH 2 REV A

ZONE	REV	SCR NUMBER	DESCRIPTION	BY	DATE	APPROVED
			SEE SHEET 1			



TOLERANCES		DESIGN	Amphenol TCS	
0.0	±0.25	09/10/10 D.MALOON	A Division of Amphenol Corporation	
0.00	±0.13	03/20/11 D.MALOON	200 Innovative Way, Nashua, NH 03062 603.879.3000	
0.000	± -	07/31/12 D.McNAMARA	TITLE RECEPTACLE ASSEMBLY, 5 WAFERS InfinX 4 PAIR, 9 MM HIGH	
ANGLES	± 3°	07/31/12 D.McNAMARA	PART NO. SEE TABLE 1 REV N/A	
UNLESS OTHERWISE SPECIFIED DIMENSIONS ARE IN MM. DECIMAL MARKER IS A PERIOD			DRAWING NO. C-380-3334-500 REV A	
CUSTOMER USE DRAWING			PART 01155-RECEP-ASSY-4X09X05-VC DRAWING C-380-3334-500 1.10 A.0	
SIZE	D	SCALE	6/1	SHEET 2 OF 4

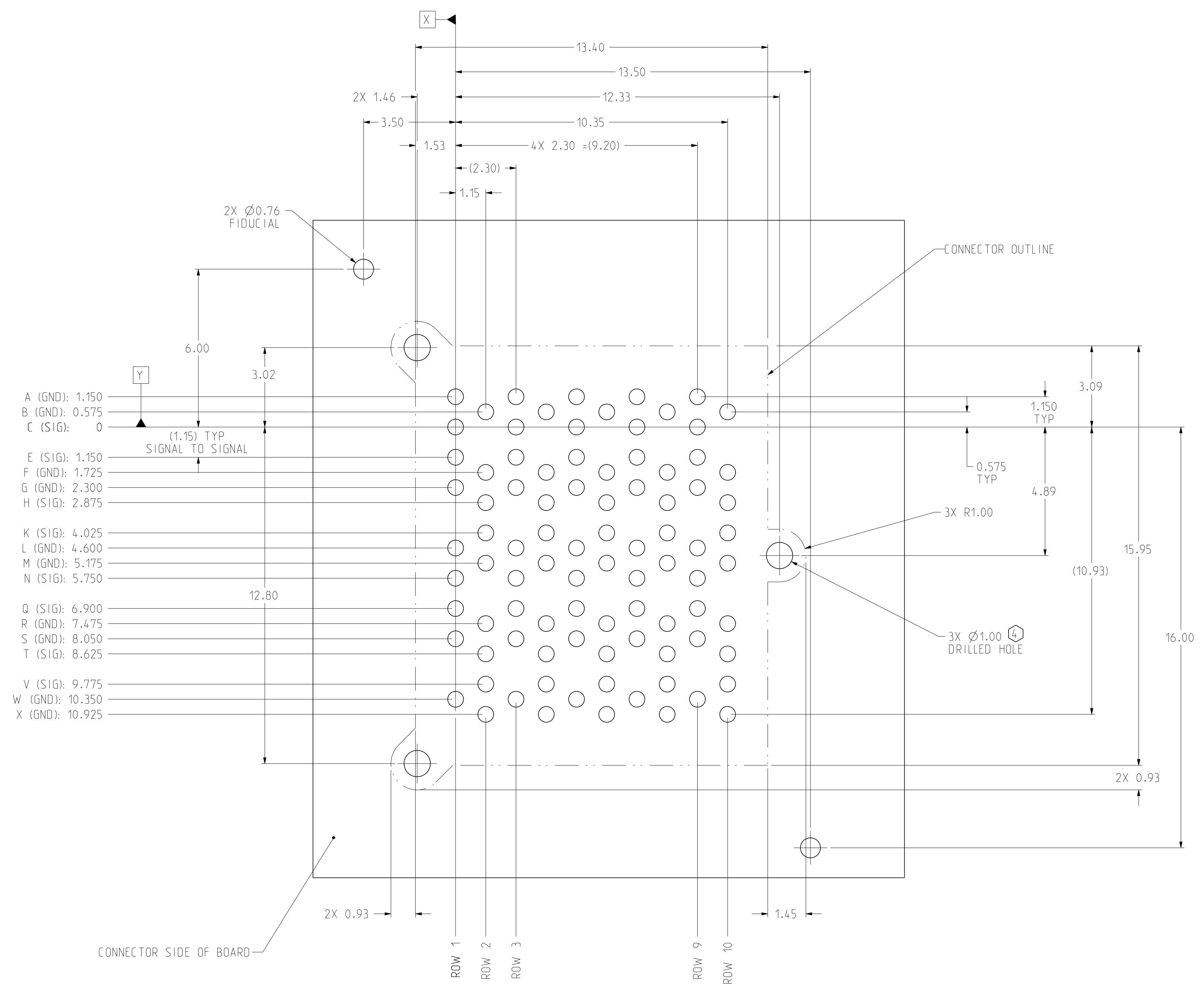


8 7 6 5 4 3 2 1

DRAWING NO. C-380-3334-500

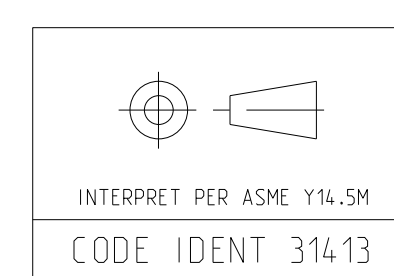
SH 2 REV A

ZONE	REV	SCR NUMBER	DESCRIPTION	BY	DATE	APPROVED
			SEE SHEET 1			



- A (GND): 1.150
- B (GND): 0.575
- C (SIG): 0
- E (SIG): 1.150
- F (GND): 1.725
- G (GND): 2.300
- H (SIG): 2.875
- K (SIG): 4.025
- L (GND): 4.600
- M (GND): 5.175
- N (SIG): 5.750
- Q (SIG): 6.900
- R (GND): 7.475
- S (GND): 8.050
- T (SIG): 8.625
- V (SIG): 9.775
- W (GND): 10.350
- X (GND): 10.925

**PAD LAYOUT**  
SCALE 10/1



TOLERANCES	DESIGN	09/10/10	D.MALOON	<b>Amphenol TCS</b> A Division of Amphenol Corporation 200 Innovative Way, Nashua, NH 03062 603.879.3000	
0.0	±0.25	DRAWN	03/20/11	D.MALOON	<b>TITLE</b> RECEPTACLE ASSEMBLY, 5 WAFERS InfinX 4 PAIR, 9 MM HIGH  <b>PART NO.</b> SEE TABLE 1  <b>REV</b> N/A
0.00	±0.13	EHK	07/31/12	D.McNAMARA	
0.000	± -	APVD	07/31/12	D.McNAMARA	
ANGLES	± 3°				
UNLESS OTHERWISE SPECIFIED DIMENSIONS ARE IN MM. DECIMAL MARKER IS A PERIOD				<b>DRAWING NO.</b> C-380-3334-500  <b>REV</b> A  PART 01155-RECEP-ASSY-4X09X05-VC DRAWING C-380-3334-500 <b>SCALE</b> 6/1 <b>SHEET</b> 3 OF 4	

CUSTOMER USE  
DRAWING

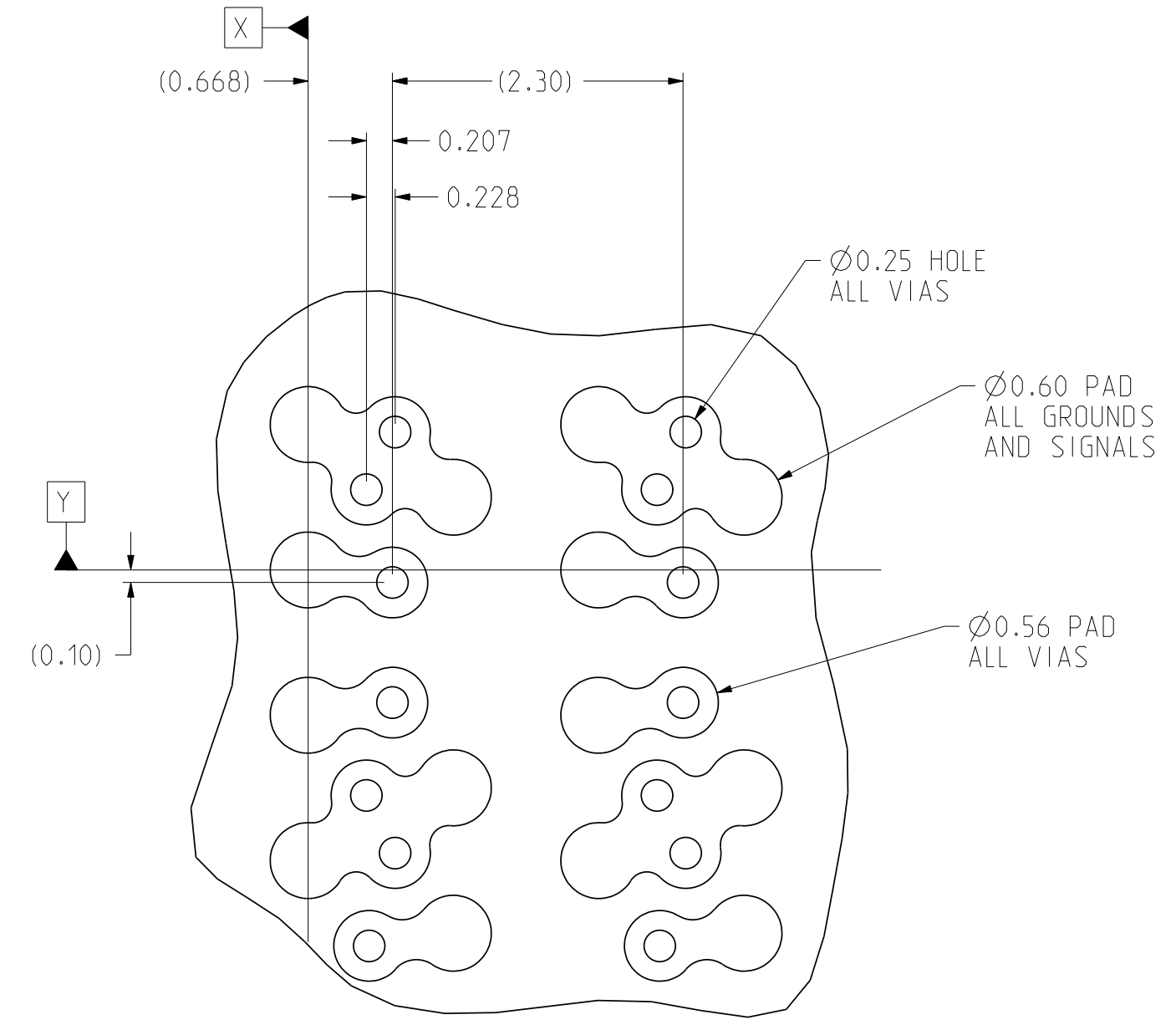
DRAWING NO. C-380-3334-500

REV A

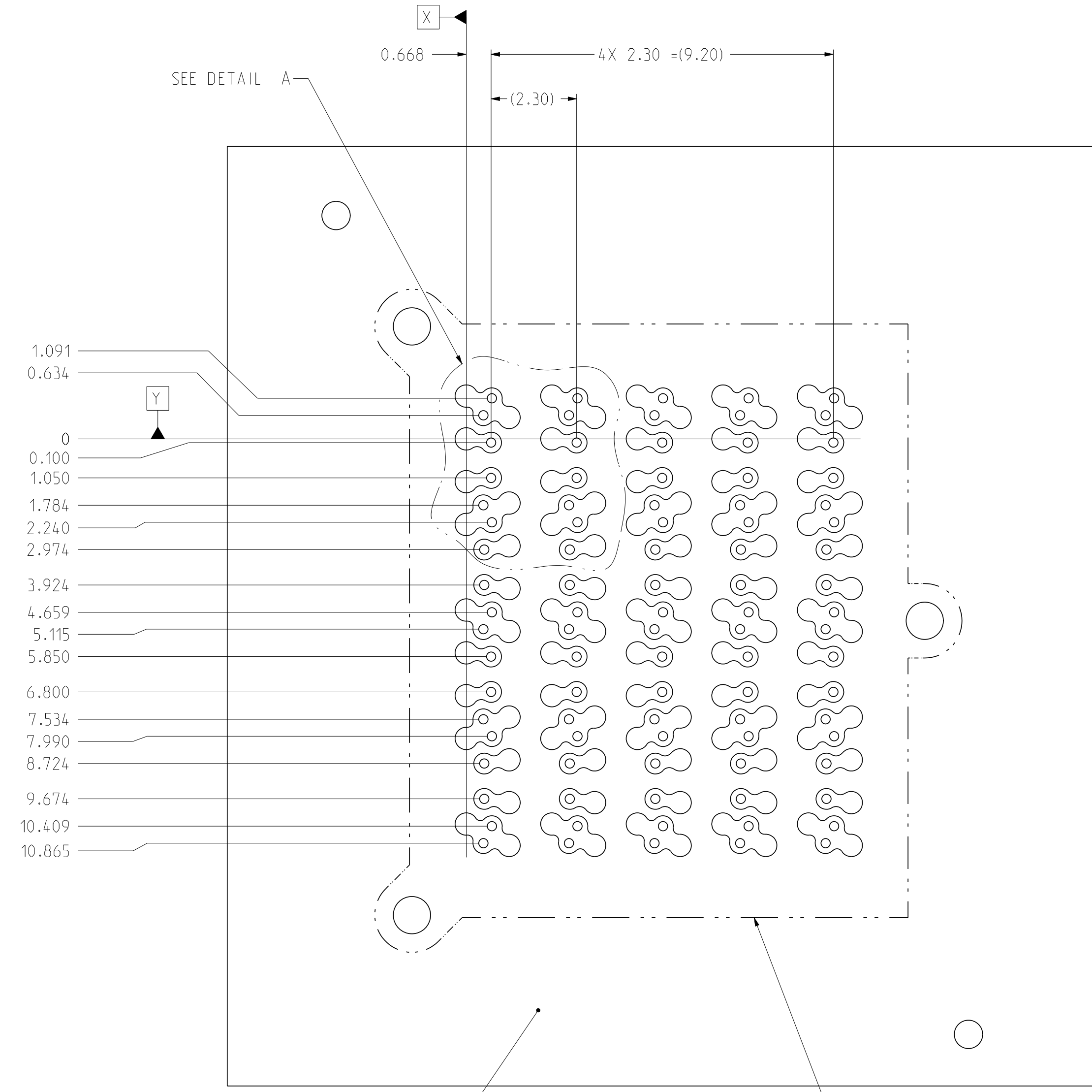
8 7 6 5 4 3

DRW NO. C-380-3334-500 SH 4 REV A

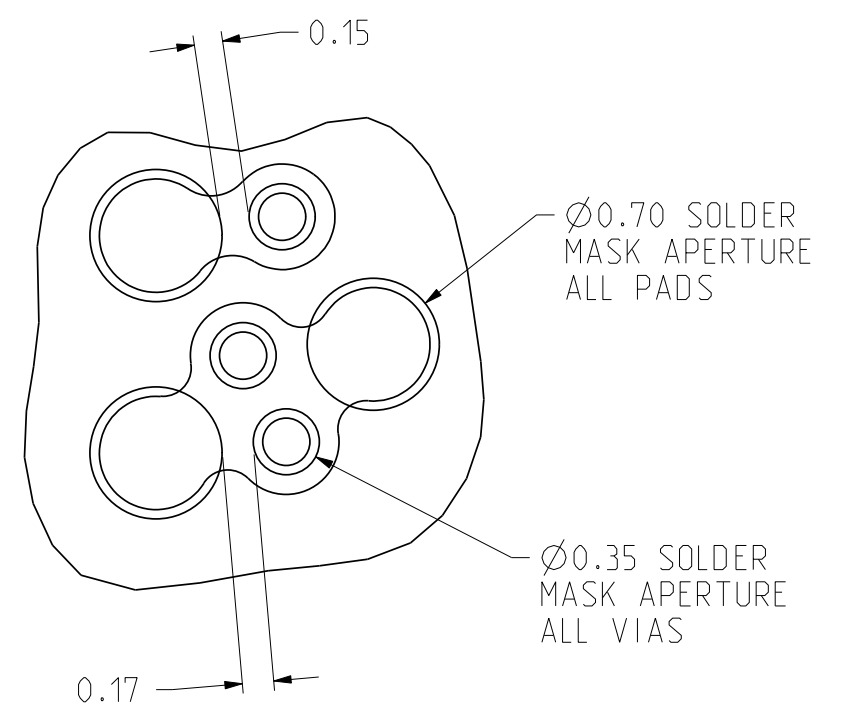
ZONE	REV	SCR NUMBER	DESCRIPTION	BY	DATE	APPROVED
			SEE SHEET 1			



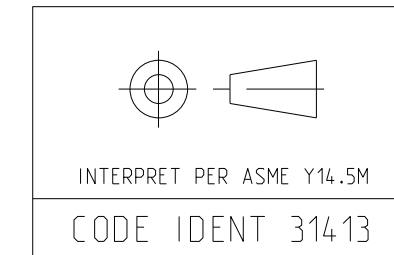
**DETAIL A**  
SCALE 20/1



**VIA LAYOUT**  
SCALE 10/1



**SOLDER MASK DETAIL**  
SCALE 25/1



INTERPRET PER ASME Y14.5M  
CODE IDENT 314.13

TOLERANCES	DESIGN	DATE	DESIGNER	DRIVER	DATE	DRIVER	TITLE	PART NO.	REV	
0.0	±0.25	09/10/10	D.MALOON				<b>Amphenol TCS</b> A Division of Amphenol Corporation 200 Innovative Way, Nashua, NH 03062 603.879.3000	RECEPTACLE ASSEMBLY, 5 WAFERS InfinX 4 PAIR, 9 MM HIGH	SEE TABLE 1	REV N/A
0.00	±0.13	03/20/11	D.MALOON							
0.000	±	07/31/12	D.McNAMARA							
ANGLES	± 3°	07/31/12	D.McNAMARA							
UNLESS OTHERWISE SPECIFIED DIMENSIONS ARE IN MM. DECIMAL MARKER IS A PERIOD								DRAWING NO. C-380-3334-500	REV A	
CUSTOMER USE DRAWING								PART 01155-RECEP-ASSY-4X09X05-VC	1.10	
								DRAWING C-380-3334-500	A.0	
SIZE	D	SCALE	6/1	SHEET	4 OF 4					

DRAWING NO. C-380-3334-500

REV A

8 7 6 5 4 3

2 1

## X-ON Electronics

Largest Supplier of Electrical and Electronic Components

*Click to view similar products for [Board to Board & Mezzanine Connectors](#) category:*

*Click to view products by [Amphenol](#) manufacturer:*

Other Similar products are found below :

[589158040000018](#) [MDF7C-18P-2.54DSA\(55\)](#) [FCN-230C068-11](#) [FCN-268F012-G/BD](#) [FCN-268F036-G/BD](#) [FCN-268M012-G/0D](#) [FCN-268M024-G/1D](#) [FCN-723J004/1](#) [MIS-048-01-F-D-DP-K](#) [832-10-034-10-001000](#) [FX4C-80S-1.27DSA](#) [FCN-214Q030-G/0](#) [FCN-234P048-G/0](#) [FCN-235D050-G/C](#) [210-93-314-41-105000](#) [2-22603-0](#) [MDF7-40DP-2.54DSA\(55\)](#) [AXG720047](#) [MIT-114-03-F-D-K](#) [55323-1519](#) [DF33-2P-3.3DSA\(24\)](#) [YFT-20-05-H-03-SB-K](#) [503308-3040](#) [026-6203-PDB](#) [027-6203-PDB](#) [069159702701000](#) [10123981-102LF](#) [101A10019X](#) [55650-0588-C](#) [68682-310LF](#) [68684-306](#) [75140-7012](#) [87471-650](#) [YTW-30-07-H-Q-410-140](#) [FCN-268F024-G0D](#) [10124054-515LF](#) [68685-603](#) [8-1616154-3](#) [MIS-019-01-F-D](#) [FCN-268M024-G/3D](#) [FCN-268M036-G/BD](#) [20021832-06016C1LF](#) [KX15-20KLDL-E1000E](#) [AXE810124](#) [FCN-214J100-G/0](#) [FCN-230C068-E/S](#) [AXE812124](#) [AXE816124](#) [AXE720127](#) [354184](#)