

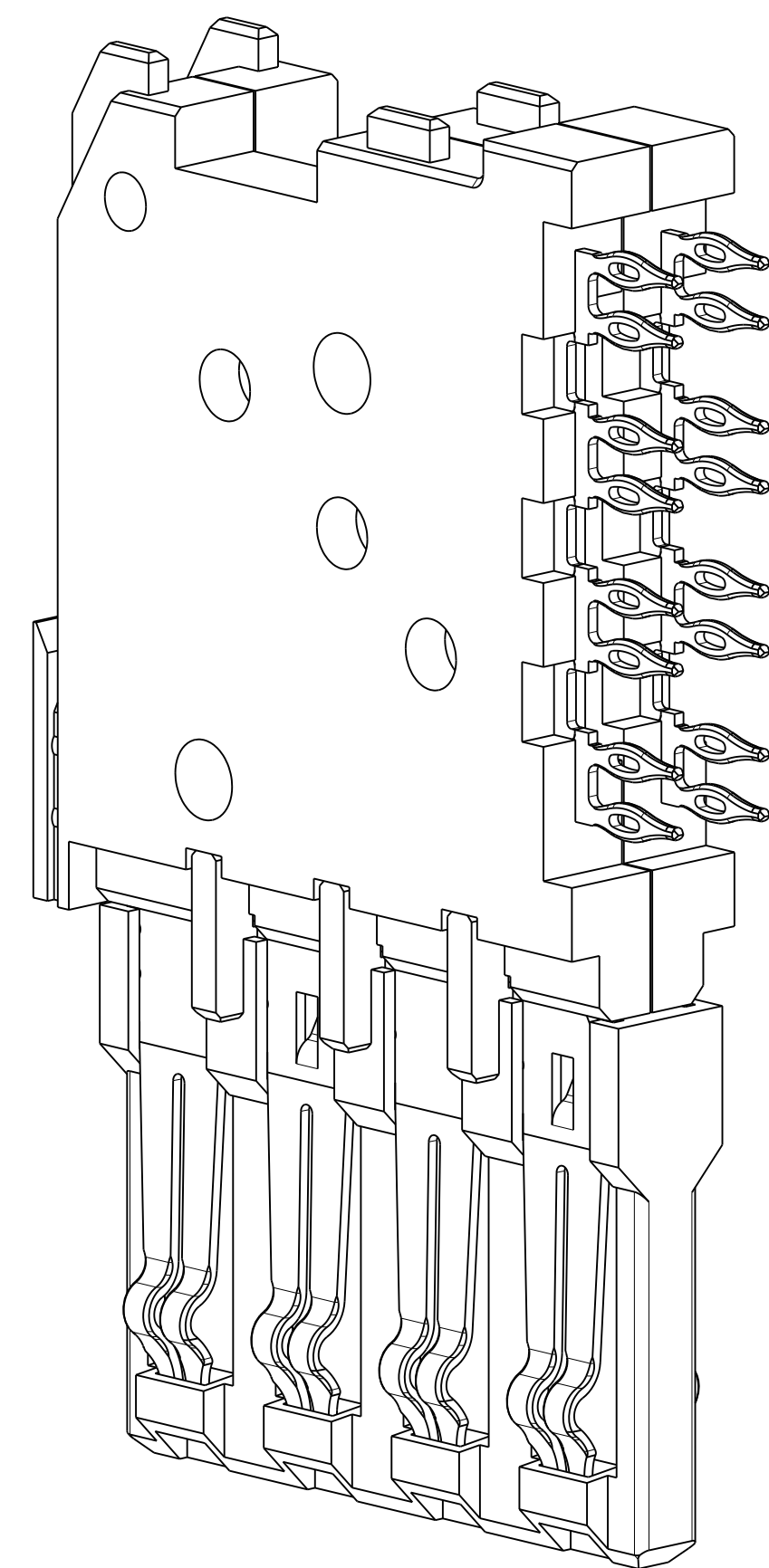
ZONE	REV	SCR NUMBER	DESCRIPTION	BY	DATE	APPROVED
ALL	-	MDRA-6G2RD3.VER01	NEW RELEASE	MD	09/08/05	M.HANRAHAN
-	A	CSAS-7ZMVJT.VER01	ADDED NEW PART NUMBERS IN TABLE 1 FOR NEW PLATING CODES.	HCL-GM	01/13/2010	C.SAMMIS
ALL	B	DSMH-8J2NZP.VER01	ADDED SHEET 2 AND ISOMETRIC VIEW ADDED PART NUMBER TABLE 2	HCL-PS	06/28/2011	D.SMITH
SH1, C3	C	DSMH-8W YQ6Q.VER01	REMOVED VERTICAL TIE BAR FROM WAFER A	HCL-AS	08/10/2012	D.SMITH

TABLE 1 - 2.56 MM LENGTH

PART NUMBER	REV	PLATING	MAKE FROM	QTY
439-5100-000	C	PLATING CODE 735. PER EGS205	173-1101-735 173-1303-735 353-0004-081	1
439-5200-000	C	PLATING CODE 769. PER EGS205	173-1101-769 173-1303-769 353-0004-081	1
439-5300-000	C	PLATING CODE 732. PER EGS205	173-1101-732 173-1303-732 353-0004-081	1
439-5400-000	C	PLATING CODE 768. PER EGS205	173-1101-768 173-1303-768 353-0004-081	1
439-5500-000	C	PLATING CODE 803. PER EGS205	173-1101-803 173-1303-803 353-0004-081	1
439-5600-000	C	PLATING CODE 804. PER EGS205	173-1101-804 173-1303-804 353-0004-081	1
439-5700-000	C	PLATING CODE 805. PER EGS205	173-1101-805 173-1303-805 353-0004-081	1
439-5800-000	C	PLATING CODE 806. PER EGS205	173-1101-806 173-1303-806 353-0004-081	1

TABLE 2 - 1.99 MM LENGTH

PART NUMBER	REV	PLATING	MAKE FROM	QTY
439-5100-100	C	PLATING CODE 735. PER EGS205	956-4000-A2B	1
439-5300-100	C	PLATING CODE 732. PER EGS205	956-4000-A2C	1
439-5200-100	C	PLATING CODE 769. PER EGS205	956-4000-A2D	1
439-5400-100	C	PLATING CODE 768. PER EGS205	956-4000-A2E	1
439-5600-100	C	PLATING CODE 804. PER EGS205	956-4000-A2F	1
439-5500-100	C	PLATING CODE 803. PER EGS205	956-4000-A2G	1
439-5800-100	C	PLATING CODE 806. PER EGS205	956-4000-A2H	1
439-5700-100	C	PLATING CODE 805. PER EGS205	956-4000-A2J	1



ISOMETRIC VIEW
SCALE 6/1

NOTES:

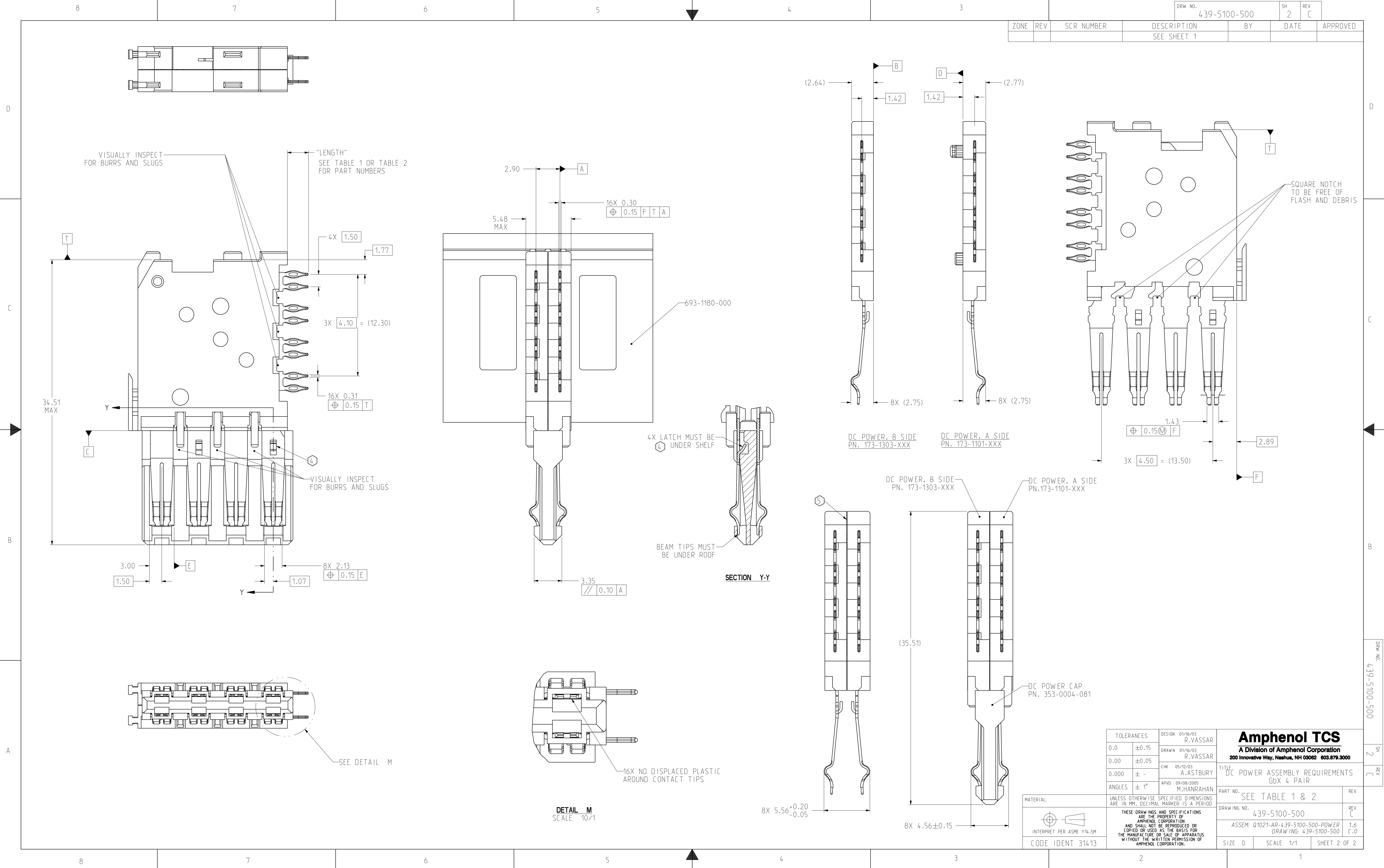
- MOLDINGS SHALL BE VISUALLY INSPECTED, AND TO BE FREE OF DEFECTS OR DAMAGE SUCH AS CRACKS, CHIPS, SPLITS, VOIDS (SHORTS OR NONFILL) AND FLASH(FLASH GREATER THAN 0.15 IN THICKNESS OR LENGTH).
- MOLDINGS SHALL BE UNIFORM IN COLOR AND TEXTURE, AND SHALL BE FREE OF DIRT, OIL AND ANY FOREIGN MATTER.
- ALL CONTACTS SHALL BE VISUALLY INSPECTED USING A 10X SCOPE FOR SURFACE FINISH QUALITY. ANY EXHIBITING SURFACE SCRATCHES IN MATING AREAS OR SCRATCHES THAT EXPOSE BASE METAL (EXPOSED BASE METAL IS ALLOWED IN TIEBAR CUTOFF AREA) SHALL BE REJECTED. ALL CONTACTS SHALL BE VISUALLY INSPECTED, ANY SHOWING DAMAGE OR DEFECTS SUCH AS BURRS, TWIST, BENT OR OTHER DEFORMATION, SHALL BE REJECTED.
- STAKE UNDER SHELF TO RETAIN DC POWER CAP, 15 POUNDS MINIMUM RETENTION, 4 PLACES.
- 3 LBS. MINIMUM RETENTION FORCE BETWEEN A AND B SIDES.
- PRODUCT MUST PASS HIPOT TESTING AT 550 VOLTS.

TOLERANCES		DESIGN 01/16/03 R.VASSAR	Amphenol TCS A Division of Amphenol Corporation 200 Innovative Way, Nashua, NH 03062 603.878.3000 TITLE DC POWER ASSEMBLY REQUIREMENTS GbX 4 PAIR PART NO. SEE TABLE 1 & 2 DRAWING NO. 439-5100-500 ASSEM: Q1021-AR-439-5100-500-POWER DRAWING: 439-5100-500 SIZE D SCALE 1/1 SHEET 1 OF 2
0.0	±0.15	DRAWN 01/16/03 R.VASSAR	
0.00	±0.05	CHK 05/12/03 A.ASTBURY	
0.000	± -	APVD 09/08/2005 M.HANRAHAN	
ANGLES	± 1°		
MATERIAL:		UNLESS OTHERWISE SPECIFIED DIMENSIONS ARE IN MM, DECIMAL MARKER IS A PERIOD	
INTERPRET PER ASME Y14.5M CODE IDENT 31413		THESE DRAWINGS AND SPECIFICATIONS ARE THE PROPERTY OF AMPHENOL CORPORATION AND SHALL NOT BE REPRODUCED OR COPIED OR USED AS THE BASIS FOR THE MANUFACTURE OR SALE OF APPARATUS WITHOUT THE WRITTEN PERMISSION OF AMPHENOL CORPORATION.	

005-0015-6E7

SH 1
REV C

DRW NO.	439-5100-500	SH	2	REV	C	
ZONE	REV	SCR NUMBER	DESCRIPTION	BY	DATE	APPROVED
			SEE SHEET 1			



TOLERANCES	DESIGN	01/16/03
0.0	±0.15	R.VASSAR
0.00	±0.05	R.VASSAR
0.000	± -	A.ASTBURY
ANGLES	± 1°	M.HANRAHAN

Amphenol TCS	
A Division of Amphenol Corporation	
200 Innovative Way, Nashua, NH 03062 603.878.3000	
TITLE	DC POWER ASSEMBLY REQUIREMENTS GbX 4 PAIR
PART NO.	SEE TABLE 1 & 2
DRAWING NO.	439-5100-500
ASSEM.	Q1021-AR-439-5100-500-POWER
SCALE	1/1
SHEET	2 OF 2

MATERIAL:	UNLESS OTHERWISE SPECIFIED DIMENSIONS ARE IN MM, DECIMAL MARKER IS A PERIOD
INTERPRET PER ASME Y14.5M	THESE DRAWINGS AND SPECIFICATIONS ARE THE PROPERTY OF AMPHENOL CORPORATION AND SHALL NOT BE REPRODUCED OR COPIED OR USED AS THE BASIS FOR THE MANUFACTURE OR SALE OF APPARATUS WITHOUT THE WRITTEN PERMISSION OF AMPHENOL CORPORATION.
CODE IDENT	31413

UN ANBU 005-0015-6E7

SH 2 REV C

X-ON Electronics

Largest Supplier of Electrical and Electronic Components

Click to view similar products for [High Speed/Modular Connectors](#) category:

Click to view products by [Amphenol](#) manufacturer:

Other Similar products are found below :

[650827-1](#) [74040-1346](#) [1410191-1](#) [1410337-1](#) [1410368-3](#) [1410964-2](#) [1410326-3](#) [1410367-3](#) [1410971-4](#) [1467833-1](#) [2000877-1](#) [2000878-1](#)
[2041314-1](#) [2065387-1](#) [2187307-1](#) [163P](#) [1934290-1](#) [2000875-1](#) [2065917-1](#) [2102736-2](#) [FSR-40](#) [2169868-2](#) [22354-8](#) [437-5040-000](#) [5-](#)
[1393565-0](#) [039-0246-000](#) [0740618502](#) [0761601016](#) [10123159-12ELF](#) [030-2415-003/100 PK](#) [030-7380-004](#) [030-2494-001](#) [532939-1](#)
[5532901-3](#) [3-1469268-7](#) [74748-102LF](#) [73670-0247](#) [10041743-101LF](#) [10066670-100002LF](#) [1-533915-1](#) [249-4515-000](#) [7-1469373-3](#) [DL2-](#)
[2J/S](#) [2000713-8](#) [2000713-7](#) [3011-21](#) [757105208](#) [EBTF-4-10-2.0-S-RA-1](#) [430305-001](#) [4395800100](#)