

NOTES:

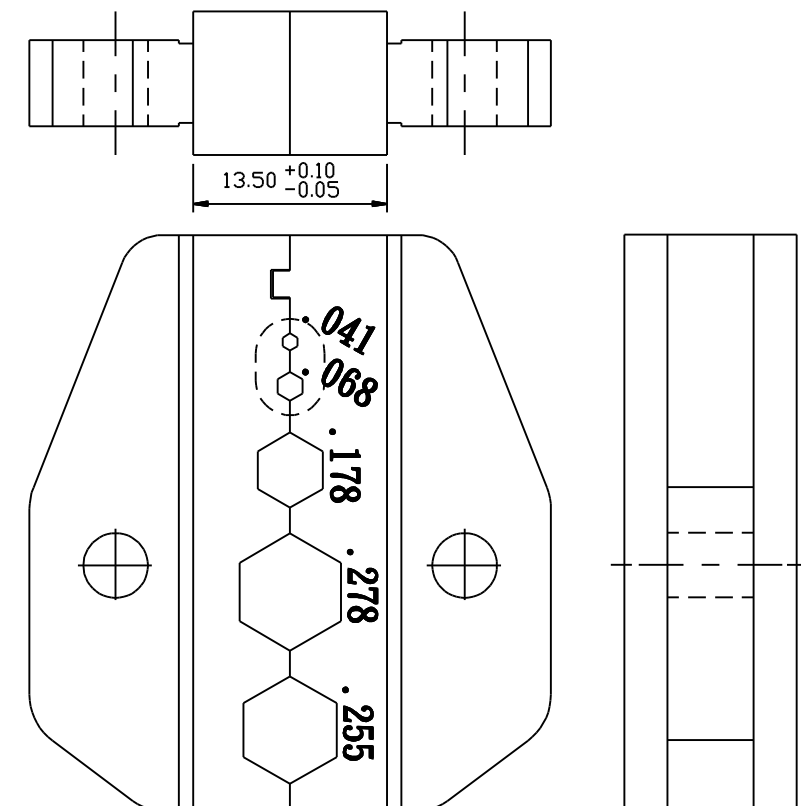
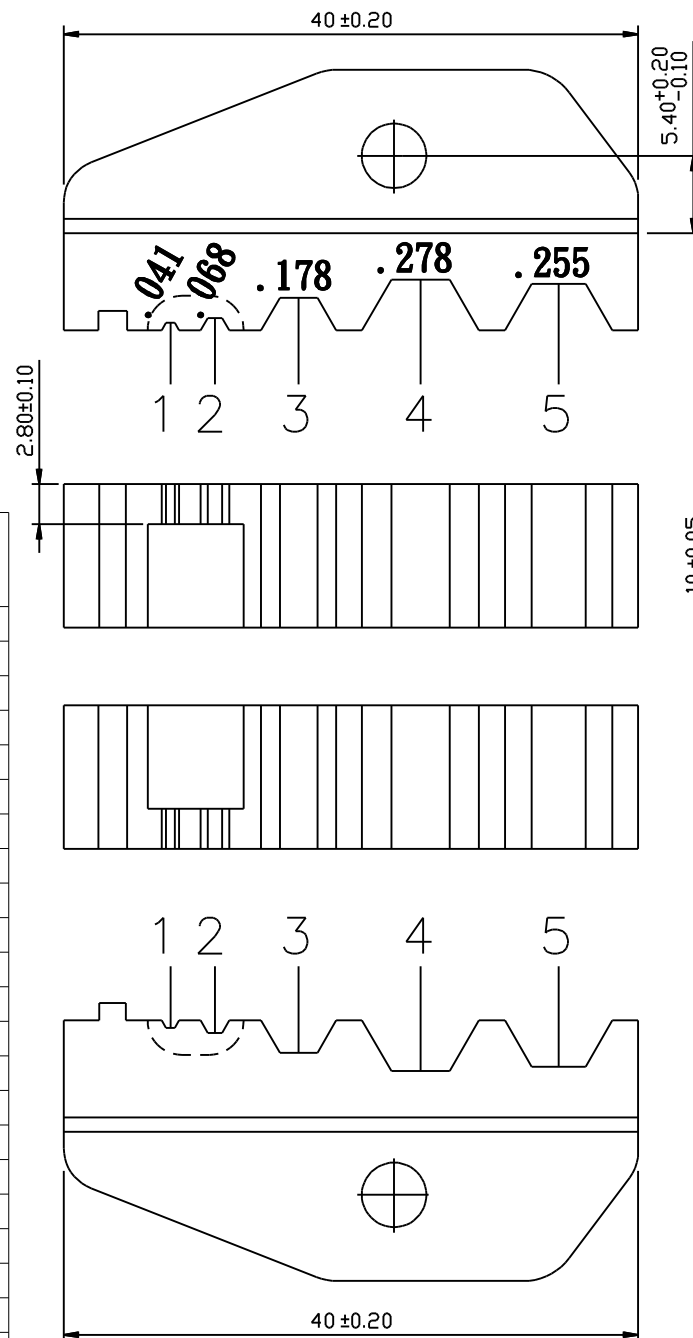
- INITIAL TOOL SETTING REQUIREMENTS:
WITH DIES FIRMLY AFFIXED IN TOOL ON THE DIE MOUNTING SURFACES,
CLOSE THE TOOL FULLY (UNTIL THE RATCHET RELEASES) WITH 25-35 LBS, HAND FORCE
THE DIES MUST BE 'BUTTED' (TOUCHING BOTH FRONT & REAR SURFACES).
THE RATCHET ADJUSTER WHEEL SHOULD BE POSITIONED IN THE
CENTER INDENT (+/- ONE INDENT POSITION)
- DO NOT SCALE THIS DRAWING.
- REMOVE ALL BURRS, BREAK SHARP EDGES AND CORNERS
0.005 MAXIMUM, UNLESS OTHERWISE SPECIFIED.
- UNLESS OTHERWISE SPECIFIED, ALL DIMENSIONS ARE AFTER PLATING.
- PACKAGING:
A. QUANTITY: SINGLE PACK
B. PACKAGE MARKING: AMPHENOL RF
47-2XXXX (SEE TABLE)
DATE CODE

THIRD ANGLE PROJ.

REVISIONS

REV	DESCRIPTION	DATE	ECO	APPR
A	RELEASE TO MFG.	18-Dec-14	2809	CL/BCG

DIE SET PART NUMBER	DIE SET OPENINGS IN INCHES (MM)				
	(UNLESS OTHERWISE NOTED, ALL OPENINGS ARE HEXAGONAL)				
47-20000	0.068(1.73)	0.213(5.41)	0.255(6.48)	-	-
47-20004	0.068(1.73)	0.128(3.25)	0.178(4.52)	-	-
47-20008	0.151(3.83)	0.178(4.52)	0.213(5.41)	-	-
47-20003	0.080(2.03)	0.100(2.54)	0.429(10.90)	-	-
47-20029	0.100(2.54)	0.429(10.90)	0.213(5.41)	-	-
47-20001	0.042(1.07)	0.068(1.73)	0.255(6.48)	0.324(8.23)	-
47-20002	0.042(1.07)	0.068(1.73)	0.178(4.52)	0.213(5.40)	-
47-20245	0.042(1.07)	0.068(1.73)	0.190(4.82)	0.213(5.40)	-
47-20026	0.255(6.48)	0.320(8.13)	0.350(8.88)	-	-
47-20025	0.052(1.32)	0.068(1.73)	0.100(2.54)	0.213(5.41)	0.255(6.48)
47-20024	0.178(4.52)	0.324(8.23)	0.068(1.73)	-	-
47-20027	0.116(2.95)	0.429(10.90)	-	-	-
47-20028	0.178(4.52)	0.255(6.48)	0.052(1.32)	0.068(1.73)	-
47-20030	0.042(1.07)	0.068(1.73)	0.255(6.48)	0.278(7.08)	-
47-20247	0.106(2.70)	0.114(2.90)	0.130(3.30)	-	-
47-20249	0.068(1.73)	0.100(2.54)	0.429(10.90)	-	-
47-20250	0.042(1.07)	0.068(1.73)	0.128(3.25)	0.178(4.52)	-
47-20251	0.052(1.32)	0.263(6.68)	-	-	-
47-20252	0.052(1.32)	0.278(7.06)	-	-	-
47-20253	0.042 (1.07) SQ.	0.068(1.73)	0.178(4.52)	0.278(7.06)	0.255(6.48)
47-20254	0.178(4.52)	0.187(4.75)	0.042(1.07)	-	-
-	0.324(8.23)	0.319(8.10)	0.255(6.48)	0.042(1.07)	-
47-20255	0.052(1.32)	0.068(1.73)	0.255(6.48)	0.324(8.23)	-
47-20256	0.429(10.90)	0.075(1.90)	0.075(1.90)	-	-
47-20257	0.105(2.67)	0.128(3.25)	0.151(3.84)	-	-



CUSTOMER OUTLINE DRAWING
ALL OTHER SHEETS ARE FOR INTERNAL USE ONLY

UNLESS OTHERWISE SPECIFIED, DIMENSIONS ARE IN METRIC AND TOLERANCES ARE:
 <0.5mm ±0.05mm 0.5 - 6mm ±0.1mm 6 - 30mm ±0.2mm 30 - 120mm ±0.3mm ANGLES ±1°

NOTICE - These drawings, specifications, or other data (1) are, and remain the property of Amphenol corp. (2) must be returned upon request; and (3) are confidential and not to be disclosed to any person other than those to whom they are given by Amphenol Corp. the furnishing of these drawings, specifications, or other data by Amphenol Corp., or to any other person to anyone for any purpose is not to be regarded by implication or otherwise in any manner licensing, granting rights to permitting such holder or any other person to manufacture, use or sell any product, process or design, patented or otherwise, that may in any way be related to or disclosed by said drawings, specifications, or other data.

MATERIAL
DRAWN CLEMENT
ENGINEER B.C. GLEISSNER
APPROVED B.C. GLEISSNER
CAD FILE
REFERENCE EAR # 6228
CONFIGURATION LEVEL: In Work
FINISH

DATE 12-Dec-14
DATE 12-Dec-14
DATE 18-Dec-14

TITLE DIE SETS
SCALE: NTS SHEET 2 OF 2
DWG SIZE B REV A

Amphenol RF
www.amphenolrf.com
DRAWING NO. 47-2XXXX
ITEM NO. 47-2XXXX
PART NO. 47-2XXXX

X-ON Electronics

Largest Supplier of Electrical and Electronic Components

Click to view similar products for [Punches & Dies](#) category:

Click to view products by [Amphenol](#) manufacturer:

Other Similar products are found below :

[58510-1](#) [63454-1601](#) [63457-0056](#) [63457-3401](#) [730-5/8](#) [730BB-1-3/8](#) [734410](#) [PV-670508-001](#) [1328](#) [1338](#) [13782656](#) [13782673](#) [AR-19](#) [AR-24](#) [1528-TL](#) [1583609-1](#) [1720](#) [1762951-1](#) [2063500-2](#) [19031-0168](#) [AR-20](#) [AR-23](#) [CD5-8](#) [313336-3](#) [11-19-3122](#) [539663-1](#) [63446-2241](#) [TL-11](#) [TL-18](#) [0634451912](#) [1762674-1](#) [63454-0123](#) [68240-1](#) [68247-1](#) [734252](#) [313183-1](#) [PA2029](#) [119174-001](#) [23846-1](#) [11-40-5342](#) [68010-2](#) [690370015](#) [730BB-1-1/8](#) [730BB-1-1/16](#) [19032-0048](#) [63465-0023](#) [11-40-4438](#) [63457-0041](#) [19032-0202](#) [11-11-0054](#)