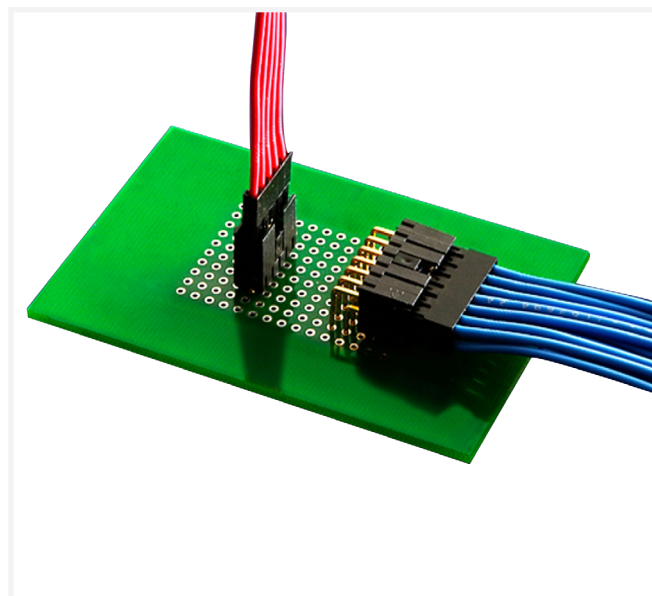


PV[®] Wire-to-Board Connector System

VERSATILE DESIGN FOR DEMANDING APPLICATIONS

Amphenol ICC's PV[®] solution is a versatile and modular system able to meet all the board-to-board, board-to-wire, wire-to-wire applications where high density, outstanding electrical and mechanical performances are required.

- Unique dual-metal PV[®] receptacle contact ensures durability up to 1000 cycles
- Beryllium copper spring ensures high normal force at the mating interface
- Polarized mating geometry to prevent mismatching
- Keyed MINI-LATCH housings provides polarization to prevent mismating



TARGET MARKETS



FEATURES

- Unique dual-metal PV[®] receptacle contact
- Beryllium copper spring
- Keyed MINI-LATCH housings
- Brass contact body
- Choice of three different spring pressures
- Shrouded header side walls engage with the sides of the MINI-LATCH housing
- Two wall header design
- RoHS compliant and lead-free

BENEFITS

- Ensures durability up to 1000 cycles
- High normal force during mating interface
- Provide polarization to prevent mismating
- Reliable, gas-tight crimp termination
- Allows the user to customize insertion and withdrawal forces to specific application requirements
- Provides additional retention
- Provides mechanical benefits
- Meets environmental, health and safety requirements

TECHNICAL INFORMATION

MATERIAL

- Contact Material:
 - PV® Wire Terminals: Brass body and beryllium copper spring
 - PCB Headers: Phosphor bronze
- Contact Plating:
 - PV® Wire Terminals: Gold or lead-free pure tin over nickel
 - PCB Headers: Gold or GXT™ (palladium-nickel with gold flash) or lead-free pure tin over nickel
- Housing Material:
 - MINI-LATCH Housings: Modified polyphenylene oxide UL94V-0
- Shrouded PCB Headers: Glass filled nylon UL94V-0
- RoHS Information: All parts with “LF” suffix are RoHS compliant

APPROVALS AND CERTIFICATION

- UR E66906
- CSA LR46923

SPECIFICATION

- Product Specification:
 - BUS-12-067 (PV® and MINI-LATCH wire connectors)
 - BUS-12-075 (Shrouded PCB headers)
- Application Drawings: TA-75, TA-146, TA-531

ELECTRICAL PERFORMANCE

- Current Rating Single Circuit: 3.0A with 32 AWG wire; larger wires allow more; all applications require de-rating
- Withstanding Voltage: 1000V RMS
- Insulation Resistance, Wire Connector: >10000MΩ
- Insulation Resistance, PCB Header: >5000MΩ
- Contact Resistance (LLCR), Wire Connector: <2mΩ
- Mating Force (individual contact max.)
 - High Force Spring: 450g
 - Ultra-high Force Spring: 1100g
- Un-mating force (individual contact min.)
 - High Force Spring: 75g
 - Ultra-high Force Spring: 175g
- PV® Contact Retention in MINI-LATCH Housing: 4lbs per contact
- Durability: 1000 mating cycles
- Temperature: -40°C to +105°C

TARGET MARKETS/APPLICATIONS



Automotive



Industrial



Consumer



Data



Industrial & Instrumentation



Medical

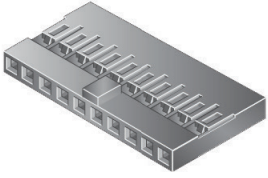
PV® Wire-to-Board Connector System

MINI-LATCH RECEPTACLE HOUSINGS

0.100in. / 2.54mm pitch

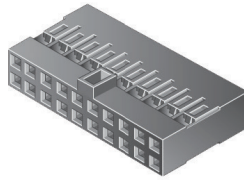
SINGLE ROW, POLARIZED, 78211 SERIES

Range: 03 to 15 positions



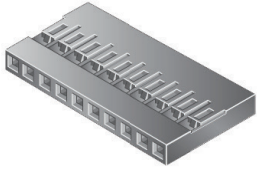
DOUBLE ROW, POLARIZED, 65846 SERIES

Range: 04 to 72 positions



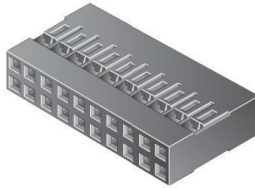
SINGLE ROW, 65039 SERIES

Range: 01 to 36 positions



DOUBLE ROW, 65043 SERIES

Range: 04 to 72 positions



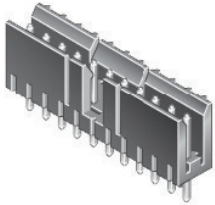
Maximum wire diameter for use in these housings is 1.52mm

SHROUDED PCB HEADERS

0.100in. / 2.54mm pitch

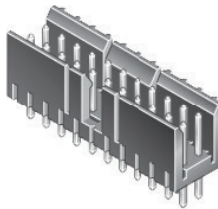
SINGLE ROW, VERTICAL, 69167 SERIES

Range: 03 to 15 positions



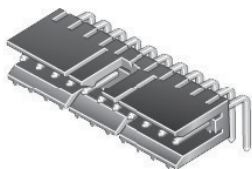
DOUBLE ROW, VERTICAL, 69168 SERIES

Range: 06 to 30 positions



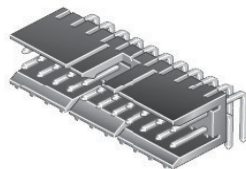
SINGLE ROW, 78208 SERIES

Range: 03 to 15 positions



DOUBLE ROW, 78207 SERIES

Range: 06 to 30 positions



PART NUMBER CONSTRUCTION

PPPPP	—	Z	—	NN	—	H	—	LF
-------	---	---	---	----	---	---	---	----

PCB Header Style	PPPPP
Single row, vertical	69167
Single row, right angle	78208
Double row, vertical	69168
Double row, right angle	78207

Plating Finish	Z
30µin. (0.76µm) Gold/GTX	1
15µin. (0.38µm) Gold/GTX	2
Pure tin	4

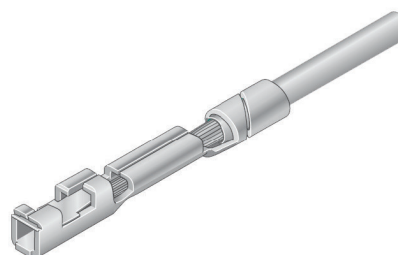
Number of Positions	NN
Available for single row	03 to 15
Available for double row	06 to 30

PV® DUAL METAL CRIMP RECEPTACLE TERMINALS

For mating to 0.025in. / 0.635mm square posts

Step 1	Step 2	Step 3	Step 4
Select application	Select spring force	Select wire size (AWG)	Select plating

Step 1	Step 2
Application Housing	Spring Force
40 – 72 contacts per housing	Standard
10 – 50 contacts per housing	High
02 – 20 contacts per housing	Ultra high
Discrete contact posts	Ultra high

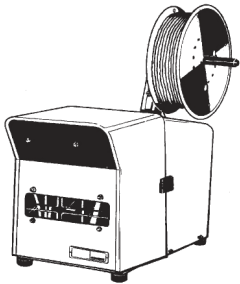


Step 3		Step 4						
Wire Size (AWG)	Spring Force	Plating/ Packaging						
		Reel				Box (Loose piece)		
		Tin	15µ Gold (0.38µm)	30µ Gold (0.76µm)	40µ Gold (0.91µm) (Europe)	Tin	15µ Gold (0.38µm)	30µ Gold (0.76µm)
PV® Part Numbers								
18, 20 or two 22 or two 24	Standard		48241-000LF	48231-000LF	48276-002LF		48250-000LF	48266-000LF
	High		48244-000LF	48047-002LF			48253-000LF	48232-000LF
	Ultra-high	47648-000LF	48247-000LF	48252-000LF	47566-002LF	47749-000LF	48256-000LF	48233-000LF
22, 24, 26 or two 26 or two 28	Standard	47445-000LF	48242-000LF	48049-000LF	47457-002LF		48251-000LF	48235-000LF
	High	47217-000LF	48245-000LF	48046-000LF	47439-002LF	47715-000LF	48254-000LF	48234-000LF
	Ultra-high	47649-000LF	48248-000LF	48051-000LF	47565-002LF	47750-000LF	48257-000LF	48236-000LF
28, 30, 32 or two 30 or two 32	Standard	47446-000LF	48243-000LF	48048-002LF		47748-000LF		48238-000LF
	High	47213-000LF	48246-000LF	48045-000LF	47437-002LF	47714-000LF	48255-000LF	48237-000LF
	Ultra-high	47650-000LF	48249-000LF	48050-000LF	47564-002LF	47751-000LF	48258-000LF	48239-000LF
32, 34, 36	Standard			75543-015LF				
	High	75543-007LF		75543-013LF		75543-008LF		75543-014LF
	Ultra-high	75543-011LF		75543-017LF		75543-012LF		75543-018LF

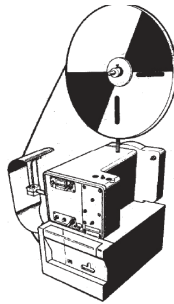
— European Part Numbers

APPLICATION TOOLING

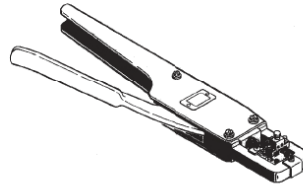
- PV-250A Semi-Automatic Crimping Machine
 - Easy to use
 - Pneumatically operated
 - Low cost
 - Estimated 1000 crimps per hour
- Machine Part Number
 - 107416-101 (18-20 AWG)
 - 107416-102 (22-26 AWG)
 - 107416-103 (28-32 AWG)



- OL-740 Semi-Automatic Two-Ton Bench Press
 - Uses quick-changing, adjustable crimping applicators for different terminals and wire sizes
 - Most rugged construction
 - Easy to use
 - Electrically operated
 - Estimated 2400 crimps per hour
- Machine Part Number
 - 133911-102 (does not include applicator)
- Applicator Tooling Part Numbers
 - 133867-104 (18-20 AWG)
 - 133867-105 (22-26 AWG)
 - 133867-106 (28-32 AWG)



- Ratcheting Hand Crimping Tool
 - Part Number
 - HT-0073 (for 18-20 AWG Wire)
 - HT-0095 (for 22-32 AWG Wire)
 - HT-0112 (for 32-36 AWG Wire)



- PV® Contact Removal Tool
 - Part Number
 - HT-0080

X-ON Electronics

Largest Supplier of Electrical and Electronic Components

Click to view similar products for [Headers & Wire Housings](#) category:

Click to view products by [Amphenol](#) manufacturer:

Other Similar products are found below :

[892-18-020-10-001101](#) [58102-G61-06LF](#) [582553-1](#) [0009485154](#) [009176003701906](#) [0050291907](#) [LY20-4P-DT1-P1E-BR](#) [02.125.8002.8](#)
[609-3404](#) [61062-3](#) [622-0430](#) [622-3653LF](#) [63453-116](#) [636-1030](#) [636-1427](#) [636-3427](#) [636-4007](#) [641938-9](#) [641991-4](#) [644827-2](#) [65817-010LF](#)
[65817-015LF](#) [65863-015LF](#) [66207-023LF](#) [67095-007LF](#) [67601157](#) [68648-049](#) [70.362.1628.0](#) [70-4210](#) [70-4226B](#) [70-4853B](#) [707-5020](#) [707-5028](#) [71.350.2428.0](#) [71918-208LF](#) [71961-016LF](#) [733-134](#) [733-162](#) [754199-000](#) [760-3052](#) [787-8014-00](#) [79531-3000](#) [FCN-360C032-B](#) [FCN-367T-T012/H](#) [FCN-723D010/2](#) [80.063.4001.1](#) [800-90-001-10-001000](#) [800-90-010-10-002000](#) [801-43-002-10-013000](#) [801-43-006-10-002000](#)