

ELECTRICAL

SPECIFICATIONS

FREQUENCY RANGE _____ DC - 40GHz

ATTENUATION _____ DC-26.5GHz _____ 26.5-40GHz
 0 TO 9 dB _____ ±0.5 dB _____ ±0.8 dB
 10 TO 15, 20 dB _____ ±0.6 dB _____ ±1.0 dB
 30 dB _____ ±0.8 dB _____ ±1.0 dB

VSWR
 DC - 18.0 GHz _____ <1.30:1
 18.0 - 40 GHz _____ <1.40:1

POWER _____ @ 25°C SEE TABLE
 DERATES LINEARLY TO 10% @ 125°C

IMPEDANCE _____ 50 OHMS

OPERATING TEMP RANGE _____ 4 KELVIN TO +125°C

MECHANICAL

HOUSING _____ PASSIVATED STAINLESS
 STEEL IAW ASTM-A484
 & ASTM-A582 ALLOY 303 COND A

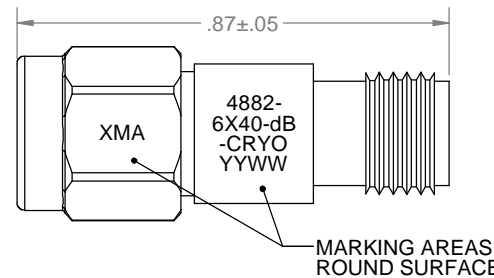
CENTER CONDUCTORS _____ GOLD PLATED BERYLLIUM COPPER

MARKING

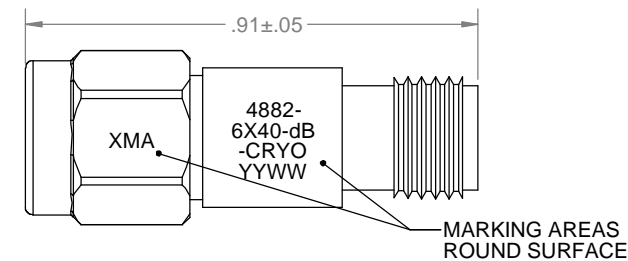
PART LOOKS LIKE PRODUCT IMAGE ABOVE.
 PART MARKING ORIENTATION AND FORMAT AS SHOWN (CURVED SURFACE).
 dB = SEE TABLE FOR TWO DIGIT dB VALUE.
 REPLACE "X" WITH ONE DIGIT REPRESENTING POWER LEVEL FROM TABLE.
 MARKING TO BE AS LARGE AS POSSIBLE.
 YYWW EQUALS DATE CODE.

4882-6X40-dB-CRYO	POWER LEVEL
X=0	0.5 WATT
X=1	1 WATT
X=2	2 WATTS

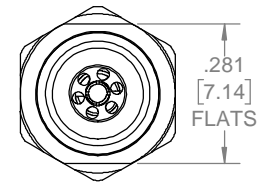
REVISIONS				
REV	DESCRIPTION	ECO #	DATE	APPROVED
F	REVISED MARKING LOCATIONS	16-166	8/4/16	T.KUHN
G	ADDED 7 THRU 9 dB	18-117	8/1/18	T.KUHN
H	ADDED 30 dB VIEW	20-005	1/14/20	T.KUHN
J	REMOVED ROHS COMPLIANT	20-173	10/13/20	MH



0 - 20 dB ONLY



30 dB ONLY



DASH #	dB VALUE	MARKED dB VALUE
4882-6X40-00-CRYO	0	00
4882-6X40-01-CRYO	1	01
4882-6X40-02-CRYO	2	02
4882-6X40-03-CRYO	3	03
4882-6X40-04-CRYO	4	04
4882-6X40-05-CRYO	5	05
4882-6X40-06-CRYO	6	06
4882-6X40-07-CRYO	7	07
4882-6X40-08-CRYO	8	08
4882-6X40-09-CRYO	9	09
4882-6X40-10-CRYO	10	10
4882-6X40-12-CRYO	12	12
4882-6X40-15-CRYO	15	15
4882-6X40-20-CRYO	20	20
4882-6X40-30-CRYO	30	30

QTY.	PART NUMBER	DESCRIPTION	ITEM NO.
X	4882-6X40-dB-CRYO	ATTENUATOR, 2.9mm-m/f, DC-40 GHz, CRYO	
1	TA-4882-6X40-dBU-CRYO	ASSY, ATTENUATOR, 2.9mm-m/f, DC-40 GHz, UNMARKED	1

DRAWING PRACTICES PER ANSI-Y-14.5 MIL-STD-100 & 1000
 DIMENSIONS ARE IN INCHES AND APPLY BEFORE / AFTER PROCESSING
 SURFACE ROUGHNESS μ INCHES 63
 FINISH:
 SEE NOTES
 MATERIAL:
 SEE NOTES
 NOTE:
 THIS DRAWING INCORPORATES THIRD ANGLE PROJECTION.
 INTERPRET IAW ANSI Y14.5-1982

UNLESS OTHERWISE SPECIFIED TOLERANCES IN:
 DECIMALS INCH [MM]
 .X* .05" [1.27]
 .XX* .03" [.76]
 .XXX* .010" [.25]
 ANGLES ±0°30'
 REMOVE ALL BURRS/SHARP W/ BREAK / R OF .003" TO .0005"
 UNLESS OTHERWISE NOTED DIAS CONCENTRIC <.003 T.I.R.
 DO NOT SCALE PRINT

DRAWN DATE
 T.KUHN 1/11/13
 CHECKED DATE
 MCCORMICK 1/11/13
 ENG. APPR. DATE
 T.KUHN 1/11/13

THESE DRAWINGS AND SPECIFICATIONS ARE THE PROPERTY OF XMA CORP. OR OMNI SPECTRA AND SHALL NOT BE REPRODUCED, COPIED NOR USED - IN WHOLE OR IN PART - AS A BASIS FOR THE MANUFACTURE OR SALE OF OTHER ITEMS WITHOUT THE EXPRESS WRITTEN PERMISSION OF XMA CORP.

Phone: 603-222-2256 Fax: 603-222-2259
 150 Dow Street, Manchester, NH 03101

TITLE
ATTENUATOR, 2.9mm-m/f, DC-40GHz

SIZE B	CAGE CODE 3HT76	DRAWING NUMBER 4882-6X40-dB-CRYO	REV J
SCALE	PLATED AREA SQ. IN	SHEET 1 OF 1	

X-ON Electronics

Largest Supplier of Electrical and Electronic Components

Click to view similar products for [Attenuators - Interconnects](#) category:

Click to view products by [Amphenol](#) manufacturer:

Other Similar products are found below :

[R414701000](#) [R411800121](#) [R413840115](#) [ATT-523F-05-SMA-02](#) [R413305000](#) [R411808121](#) [R412501124](#) [R414702000](#) [ATP8-10006KV](#)
[R414705000](#) [R411710124](#) [R410220121](#) [CT3369A-20](#) [09AS102-K40S3](#) [R411802000](#) [ATT-263F-03-SMA-02](#) [R417320130](#) [R412508124](#)
[R417030110](#) [ATT-523F-12-SMA-02](#) [ATT-263F-06-SMA-02](#) [ATT-0263-22-SMA-02](#) [ATT-263F-10-SMA-02](#) [ATT-523F-10-SMA-02](#)
[R422030020](#) [R422020030](#) [R417506130](#) [ATT-0263-25-SMA-02](#) [R413810000](#) [R411810124](#) [R413803000](#) [R417330110](#) [ATT-0290-02-HEX-](#)
[02](#) [R415603000](#) [R415620000](#) [R415606000](#) [R415610000](#) [ATT-0290-00-SMA-02](#) [AT-130V](#) [CATTEN-05R0-BNC](#) [CATTEN-04R0-BNC](#)
[6620_SMA-50-1/199_NE](#) [6630_SMA-50-2/199_NE](#) [CATTEN-06R0-BNC](#) [ATT-0294-02-SMA-02](#) [ATT-0298-06-HEX-02](#) [6610_SMA-50-](#)
[2/199_NE](#) [6605_SMA-50-1/199_NE](#) [6820.17.A](#) [6803.17.B](#)