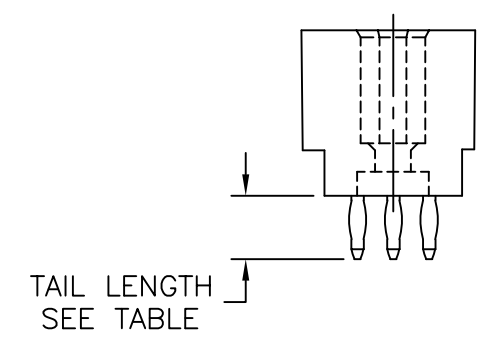
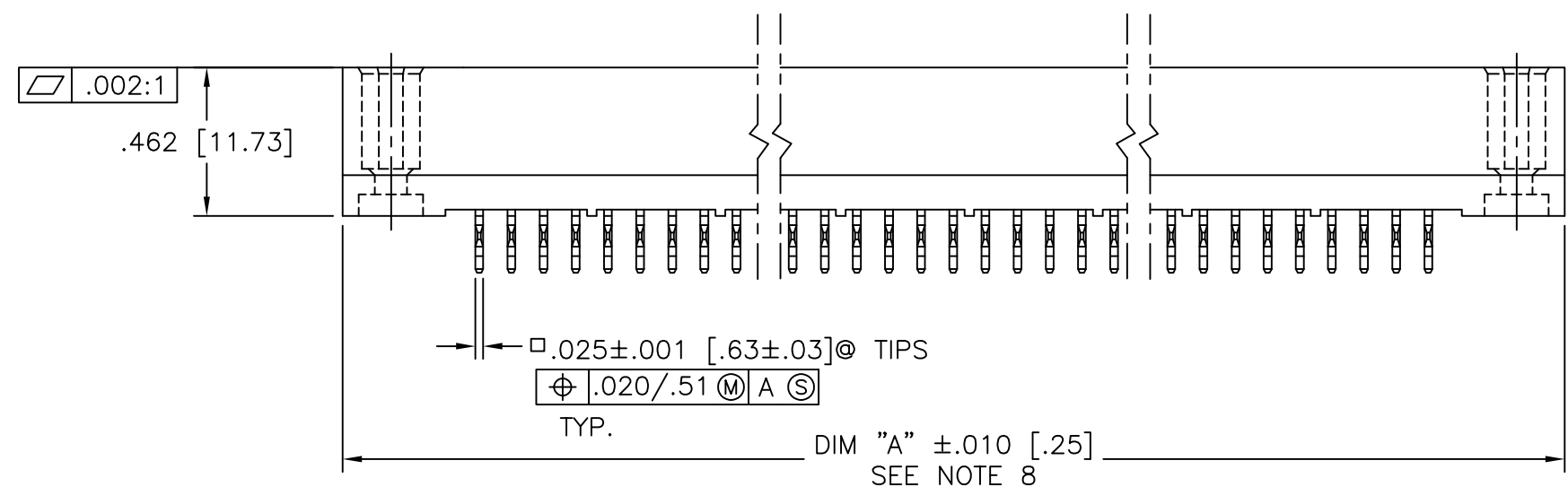
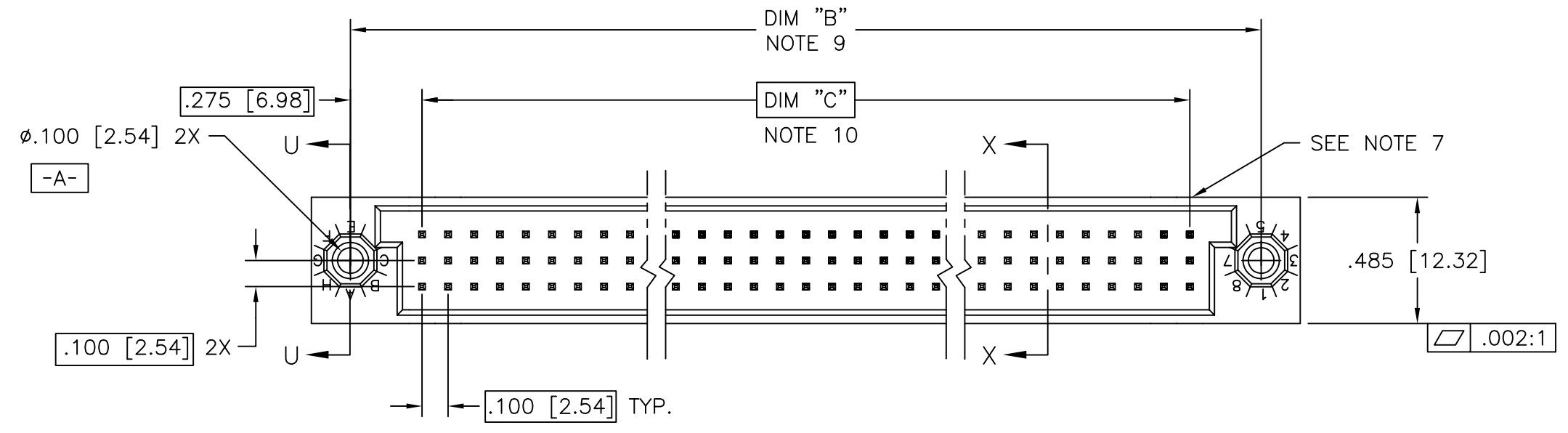


PRODUCT NUMBER
SEE TABLE



mat'l. code SEE NOTE 3				surface ISO 1302 ✓		tolerance ISO 406 ISO 1101		projection INCH/MM		product family HPC								
ltr	ecn no	dr	date	tolerances unless otherwise specified						title 3 ROW VERTICAL HEADER W/PRESS-FIT PINS, 0 G.P.								
P	I11-0094	SAL	2011-05-23	angles	linear	.XX±.01/.3		INCH/MM										
R	ELX-I-32316	MJA	2019-01-03			.XXX±.005/.13												
S	ELX-I-32331	MJA	2019-01-04	0°±2'		.XXXX±.0020/.051		scale 1:1										
-				dr	D.SHEAFER	1991-03-14				dwg no		sheet 1 of 17	size					
L	V05-1039	DAI	11/11/05	enr	S.CLARK	1991-03-14		Amphenol FCi		50006		A3						
M	M06-0283	MHT	7/27/06	chr	M JACOB	2019-01-04				type Product Customer Drawing								
N	M06-0490	MHT	12/13/06	appd	BIJU K PAUL	2019-01-04												
sheet	revision	S	P	R	P	P	P	P	P	P	P	P	P	P	B			
index	sheet	1	2	3	4	5	6	7	8	9	10	11	12	13	14	15	16	17

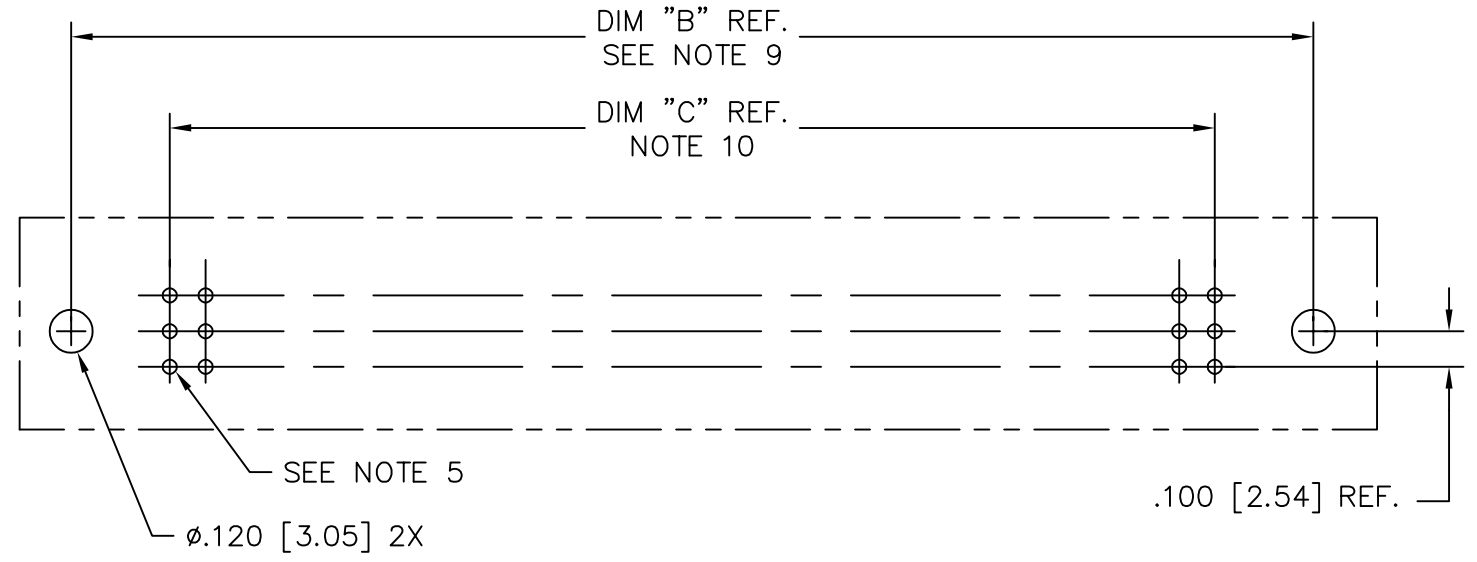
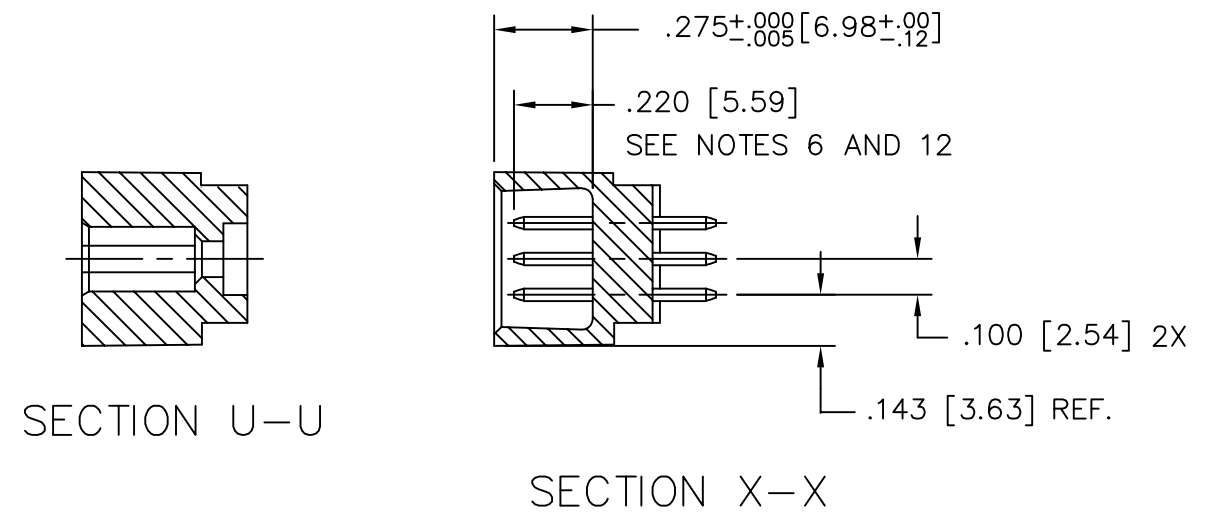
PRODUCT NUMBER
SEE TABLE

NOTES:

① PRODUCT NUMBERING CODE:
50006 - X YYY Z LF
LEAD FREE (OPTIONAL)
TAIL LENGTH SEE TABLE
NO. OF POSITIONS SEE NOTE 2
PLATING SEE TABLE
BASE NUMBER

PRODUCT NUMBERING CODE FOR
SELECT LOAD PART NUMBERS:
50006 - XX YYY LF
LEAD FREE(OPTIONAL)
SEQUENCE NUMBER
ALWAYS 'XX'
BASE NUMBER

- ② THIS PRODUCT IS CONFIGURED IN SIZES OF 6 thru 80 COLUMNS IN INCREMENTS OF ONE. i.e.: 6,7,8,9,.....79,80.
- ③ HOUSING MATERIAL: GLASS AND MINERAL FILLED HIGH TEMP. THERMOPLASTIC. FLAME RETARDANT PER UL94V-0. COLOR: BLACK. PIN MATERIAL: PHOS BRONZE
- ④ CONTACT PLATING OPTIONS: SEE PRODUCT NUMBER TABLE
- ⑤ $\phi.0453/1.151$ DRILLED HOLE PLATED WITH $.0003/.007$ MIN. SnPb OVER $.001/.03$ to $.003/.08$ Cu. PLATING TO ACHIEVE A $\phi.040\pm.003/1.02\pm.08$ HOLE.
- ⑥ TO ASSURE PROPER INSTALLATION: TOOLING, AS SPECIFIED IN INSTRUCTION MANUAL 155915-001 MUST BE USED. PIN MATING LENGTH WILL BE $\pm.002/.05$ AFTER INSTALLATION.
- ⑦ COMPANY NAME, PART NUMBER AND LOT CODE TO APPEAR ON THIS SURFACE PER BUS-12-108.
- ⑧ DIM "A" CALCULATION = $.100[2.54] \times \text{NO. OF COLUMNS} + .75[19.1]$
- ⑨ DIM "B" CALCULATION = $.100[2.54] \times \text{NO. OF COLUMNS} + .450[11.43]$
- ⑩ DIM "C" CALCULATION = $.100[2.54] \times \text{NO. OF COLUMNS} - .100[2.54]$
- 11. ALL POSITIONS ARE LOADED EXCEPT FOR -XXYYY ASSEMBLIES WHICH HAVE SELECTIVE LOADING.
- ⑫ REFERENCE 50807 FOR F.M.L.B. AVAILABLE OPTIONS AND WORKSHEET.
- 13. THIS PRODUCT (WITH 'LF' SUFFIX) MEETS EUROPEAN UNION DIRECTIVES AND OTHER COUNTRY REGULATIONS AS DESCRIBED IN GS-22-008.
- 14. THIS HOUSING WILL WITHSTAND EXPOSURE TO 260°C PEAK TEMPERATURE FOR 10-30 SECONDS IN A CONVECTION, INFRA-RED OR VAPOR PHASE REFLOW OVEN.



RECOMMENDED PCB LAYOUT
(ALL HOLES LOCATED ON $.100/2.54$ GRID UNLESS OTHERWISE SPECIFIED)

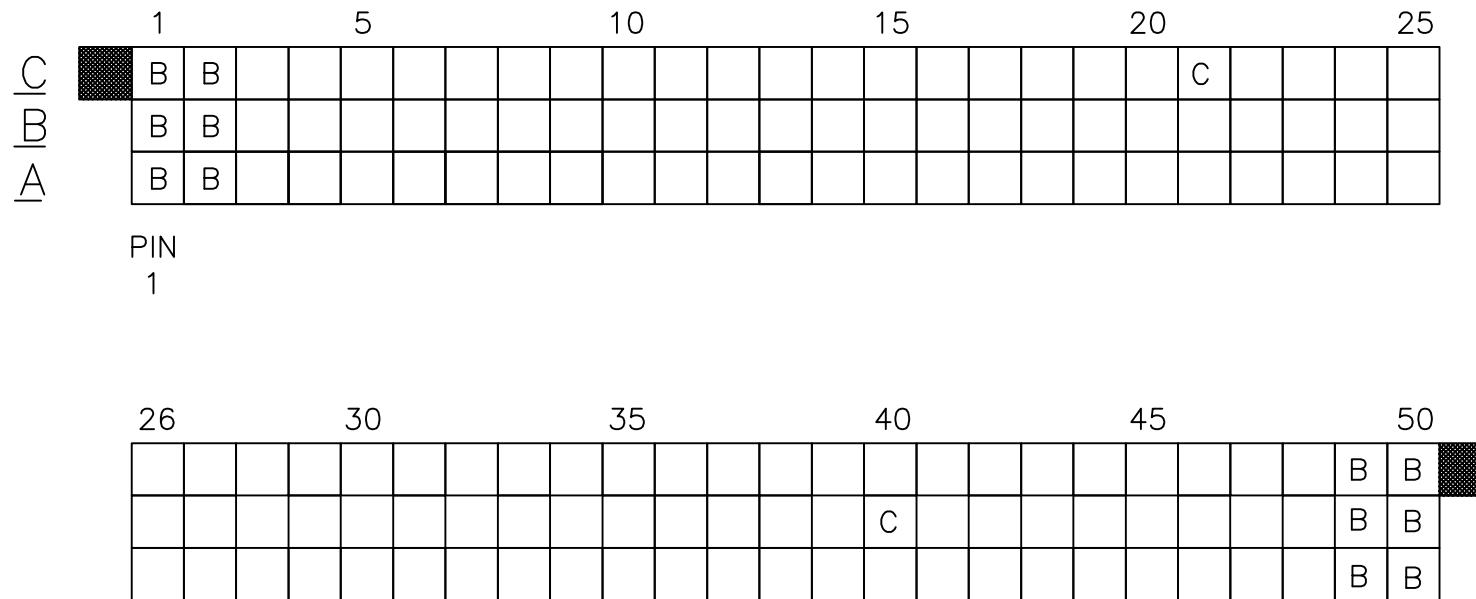
mat'l. code SEE NOTE 3		surface ISO 1302 ✓	tolerance ISO 406 ISO 1101	projection 	product family HPC
ltr	ecn no	dr	date	tolerances unless otherwise specified	title 3 ROW VERTICAL HEADER W/PRESS-FIT PINS, 0 G.P.
P				angles linear .XX±.01/.3 .XXX±.005/.13 .XXXX±.0020/.051	
				0°±2'	INCH/MM scale 1:1
		dr	D.SHEAFER	1991-03-14	Amphenol FCi dwg no 50006 sheet 2 of 17 size A3 type Product Customer Drawing
		enr	S.CLARK	1991-03-14	
		chr	S ALOSIOUS	2011-05-23	
		appd	BIJU K PAUL	2011-05-23	
sheet index	revision sheet				

PRODUCT NO.	NUMBER OF POSITIONS NOTE 2	TAIL LENGTH ±.015/0.38	CONTACT PLATING
50006-1YYYYA	YYY	.177/4.50	30u"/.76u GOLD
50006-1YYYYC	YYY	.533/13.54	30u"/.76u GOLD
50006-1YYYYD	YYY	.733/18.62	30u"/.76u GOLD
50006-1YYYYG	YYY	.250/6.35	30u"/.76u GOLD
50006-1YYYYL	YYY	.188/4.78	30u"/.76u GOLD
50006-1YYYYP	YYY	.470/11.94	30u"/.76u GOLD
50006-3YYYYA	YYY	.177/4.50	50u"/1.27u GOLD
50006-3YYYYC	YYY	.533/13.54	50u"/1.27u GOLD
50006-3YYYYD	YYY	.733/18.62	50u"/1.27u GOLD
50006-3YYYYG	YYY	.250/6.35	50u"/1.27u GOLD
50006-3YYYYL	YYY	.188/4.78	50u"/1.27u GOLD
50006-3YYYYP	YYY	.470/11.94	50u"/1.27u GOLD
50006-5YYYYA	YYY	.177/4.50	30u"/.76u GXT
50006-5YYYYALF	YYY	.177/4.50	30u"/.76u GXT
50006-5YYYYC	YYY	.533/13.54	30u"/.76u GXT
50006-5YYYYCLF	YYY	.533/13.54	30u"/.76u GXT
50006-5YYYYD	YYY	.733/18.62	30u"/.76u GXT
50006-5YYYYDLF	YYY	.733/18.62	30u"/.76u GXT
50006-5YYYYG	YYY	.250/6.35	30u"/.76u GXT
50006-5YYYYGLF	YYY	.250/6.35	30u"/.76u GXT
50006-5YYYYL	YYY	.188/4.78	30u"/.76u GXT
50006-5YYYYLLF	YYY	.188/4.78	30u"/.76u GXT
50006-5YYYYP	YYY	.470/11.94	30u"/.76u GXT
50006-5YYYYPLF	YYY	.470/11.94	30u"/.76u GXT
50006-XX010	150	SEE SHEET 4	30u"/.76u GXT
50006-XX010LF	150	SEE SHEET 4	30u"/.76u GXT
50006-XX025	18	SEE SHEET 5	30u"/.76u GXT
50006-XX025LF	18	SEE SHEET 5	30u"/.76u GXT
50006-XX027	96	SEE SHEET 6	30u"/.76u GOLD
50006-XX027LF	96	SEE SHEET 6	30u"/.76u GXT
50006-XX028	30	SEE SHEET 7	30u"/.76u GOLD
50006-XX028LF	30	SEE SHEET 7	30u"/.76u GXT
50006-XX045	180	SEE SHEET 8	30u"/.76u GXT
50006-XX045LF	180	SEE SHEET 8	30u"/.76u GXT
50006-XX049	96	SEE SHEET 9	30u"/.76u GOLD
50006-XX049LF	96	SEE SHEET 9	30u"/.76u GXT
50006-XX053	150	SEE SHEET 10	30u"/.76u GXT
50006-XX053LF	150	SEE SHEET 10	30u"/.76u GXT
50006-XX054	150	SEE SHEET 11	30u"/.76u GOLD
50006-XX054LF	150	SEE SHEET 11	30u"/.76u GXT
50006-XX055	30	SEE SHEET 12	30u"/.76u GOLD
50006-XX055LF	30	SEE SHEET 12	30u"/.76u GXT
50006-XX056	150	SEE SHEET 13	30u"/.76u GOLD
50006-XX056LF	150	SEE SHEET 13	30u"/.76u GXT
50006-XX057	150	SEE SHEET 14	30u"/.76u GOLD
50006-XX057LF	150	SEE SHEET 14	30u"/.76u GXT
50006-XX058	240	SEE SHEET 15	50u"/1.27u GOLD
50006-XX058LF	240	SEE SHEET 15	50u"/1.27u GXT
50006-XX059	240	SEE SHEET 16	50u"/1.27u GOLD
50006-XX059LF	240	SEE SHEET 16	50u"/1.27u GXT
50006-XX060LF	165	SEE SHEET 17	30u"/.76u GOLD

mat'l. code SEE NOTE 3		surface ISO 1302 ✓		tolerance ISO 406 ISO 1101		projection 		product family HPC	
ltr	ecn no	dr	date	tolerances unless otherwise specified					
R				angles	linear	.XX±.01/.3		title 3 ROW VERTICAL HEADER W/PRESS-FIT PINS, 0 G.P.	
				0°±2'		.XXX±.005/.13		INCH/MM	
						.XXX±.0020/.051		scale 1:1	
		dr	D.SHEAFER	1991-03-14	Amphenol FCi		dwg no		sheet 3 of 17
		enr	S.CLARK	1991-03-14			50006		A3
		chr	M JACOB	2019-01-03			type		Product Customer Drawing
		appd	BIJU K PAUL	2019-01-03					
sheet index	revision sheet								

PRODUCT NUMBER
50006-XX010
50006-XX010LF

FOR PRODUCT NUMBERS 50006-XX010 AND 50006-XX010LF ONLY



PIN
1

NOTES FOR 50006-XX010 AND 50006-XX010LF ONLY:

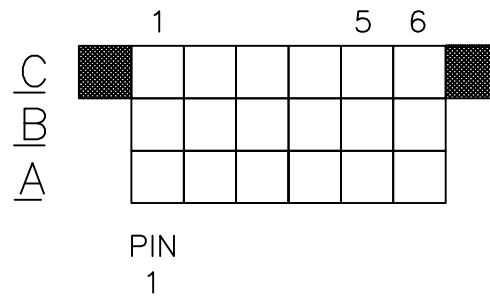
- ALL POSITIONS ARE LOADED WITH "A" EXCEPT AS SHOWN.
- COLUMN 1, ROW A IS DESIGNATED AS SIGNAL PIN 1, AS VIEWED FROM THE MATING FACE.
- SIGNAL DATA FOR 50006-XX010 AND 50006-XX010LF:
SIZE 3 x 50
TOTAL NO. OF POSITIONS - 150
NO. OF POSITIONS LOADED - 150

ITEM KEY	QTY.	MATING LENGTH	TAIL LENGTH
A	136	.200 / 5.08	.177 / 4.50
B	12	.200 / 5.08	.533 / 13.54
C	2	.240 / 6.10	.177 / 4.50

mat'l. code		surface ISO 1302 ✓		tolerance ISO 406 ISO 1101		projection 		product family HPC	
ltr	ecn no	dr	date	tolerances unless otherwise specified		INCH/MM		title	
P				angles	linear	scale 1:1		3 ROW VERTICAL HEADER W/PRESS-FIT PINS, 0 G.P.	
				0°±2'	.XX±.01/.3 .XXX±.005/.13 .XXXX±.0020/.051			dwg no 50006	
				dr	D.SHEAFER	1991-03-14	Amphenol FCi		sheet 4 of 17
				enr	S.CLARK	1991-03-14			size A3
				chr	S ALOSIUS	2011-05-23			
				appd	BIJU K PAUL	2011-05-23			type Product Customer Drawing
sheet index	revision sheet								

PRODUCT NUMBER
50006-XX025
50006-XX025LF

FOR PRODUCT NUMBERS 50006-XX025 AND 50006-XX025LF ONLY



CUSTOMER NOTE: END GUIDE PINS ARE SUGGESTED IN YOUR APPLICATION TO PREVENT STUBBING OF THE .260/6.60 MATING LENGTH SIGNAL PINS.

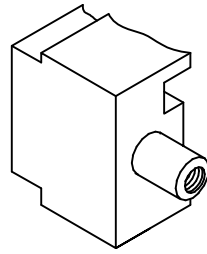
NOTES FOR 50006-XX025 AND 50006-XX025LF ONLY:

- ALL POSITIONS ARE LOADED WITH "A" .
- COLUMN 1, ROW A IS DESIGNATED AS SIGNAL PIN 1, AS VIEWED FROM THE MATING FACE.
- SIGNAL DATA FOR 50006-XX025 AND 50006-XX025LF:
SIZE 3 x 6
TOTAL NO. OF POSITIONS - 18
NO. OF POSITIONS LOADED - 18

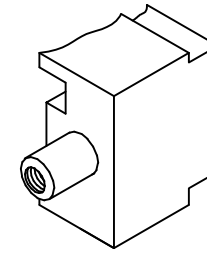
ITEM KEY	QTY.	MATING LENGTH	TAIL LENGTH
A	18	.260 / 6.60	.533 / 13.54

mat'l. code		surface ISO 1302 ✓		tolerance ISO 406 ISO 1101		projection 		product family HPC	
ltr	ecn no	dr	date	tolerances unless otherwise specified		INCH/MM		title	
P				angles	linear	.XX±.01/.3		3 ROW VERTICAL HEADER	
				0°±2'		.XXX±.005/.13		W/PRESS-FIT PINS, 0 G.P.	
						.XXXX±.0020/.051		scale 1:1	
		dr	D.SHEAFER	1991-03-14	Amphenol FCi		dwg no		sheet 5 of 17
		enr	S.CLARK	1991-03-14			50006		A3
		chr	S ALOSIOUS	2011-05-23			type		Product Customer Drawing
		appd	BIJU K PAUL	2011-05-23					
sheet index	revision sheet								

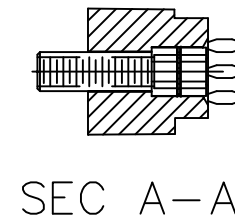
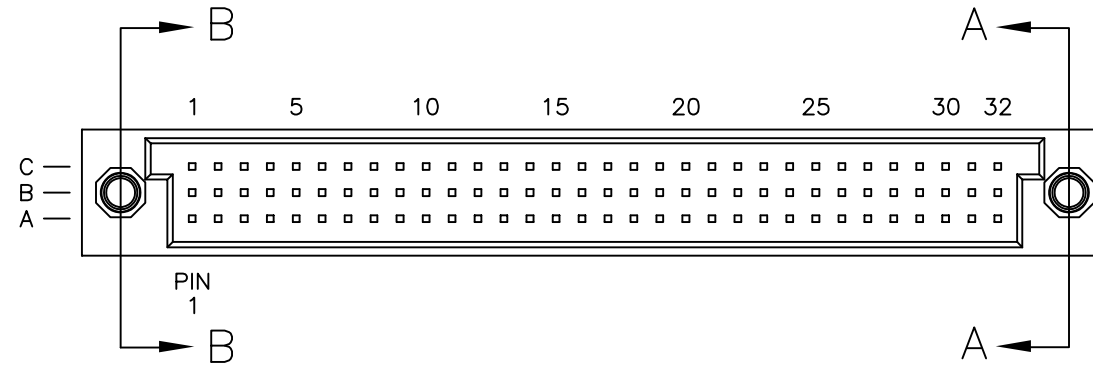
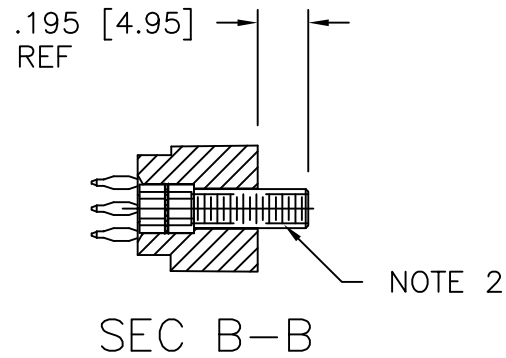
PRODUCT NUMBER
50006-XX027
50006-XX027LF



L.E.



R.E.



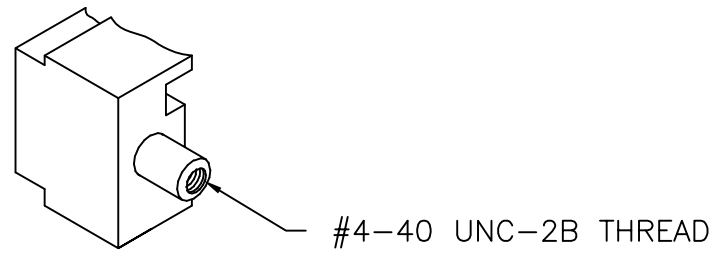
FOR PRODUCT NUMBERS 50006-XX027 AND 50006-XX027LF

NOTES:

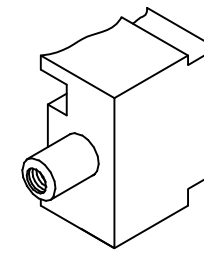
1. IDENTICAL TO P/N 50006-1096A EXCEPT AS SHOWN W/JACK SCREW INSERTS INSTALLED ON BOTH ENDS.
2. HARDWARE P/N 95729-001.

mat'l. code		surface ISO 1302 ✓		tolerance ISO 406 ISO 1101		projection 		product family HPC	
ltr	ecn no	dr	date	tolerances unless otherwise specified		INCH/MM		title	
P				angles	linear	scale 1:1		3 ROW VERTICAL HEADER W/PRESS-FIT PINS, 0 G.P.	
				0°±2'	.XX±.01/.3 .XXX±.005/.13 .XXXX±.0020/.051			dwg no	
				dr	D.SHEAFER	1991-03-14	Amphenol FCi		sheet 6 of 17
				enr	S.CLARK	1991-03-14	50006		A3
				chr	S ALOSIOUS	2011-05-23	Product Customer Drawing		
				appd	BIJU K PAUL	2011-05-23			
sheet index	revision sheet								

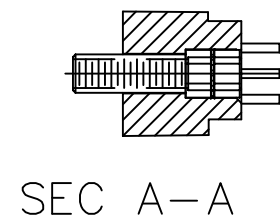
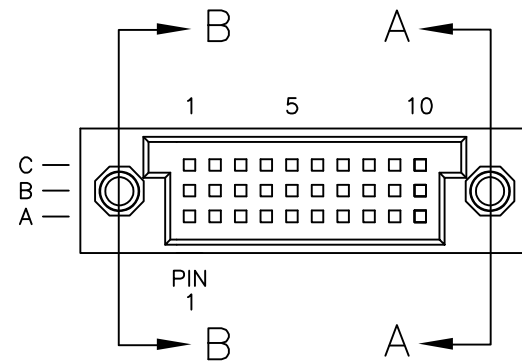
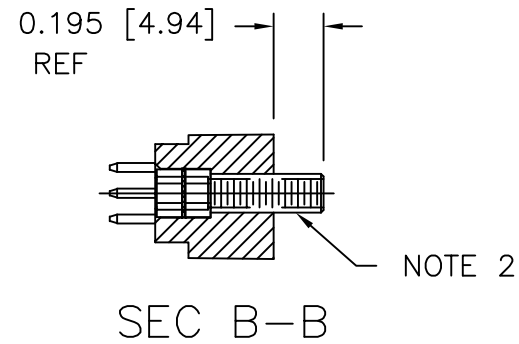
PRODUCT NUMBER
50006-XX028
50006-XX028LF



L.E.



R.E.



FOR PRODUCT NUMBERS 50006-XX028 AND 50006-XX028LF

NOTES:

1. IDENTICAL TO P/N 50006-1030A EXCEPT AS SHOWN W/JACK SCREW INSERTS INSTALLED ON BOTH ENDS.
2. HARDWARE P/N 95729-001.

mat'l. code		surface ISO 1302 ✓		tolerance ISO 406 ISO 1101		projection INCH/MM		product family HPC	
ltr	ecn no	dr	date	tolerances unless otherwise specified		INCH/MM		title	
P				angles	linear	scale 1:1		3 ROW VERTICAL HEADER W/PRESS-FIT PINS, 0 G.P.	
				0°±2'	.XX±.01/.3 .XXX±.005/.13 .XXXX±.0020/.051			dwg no 50006	
				dr	D.SHEAFER	1991-03-14	Amphenol FCi		sheet 7 of 17
				enr	S.CLARK	1991-03-14			size A3
				chr	S ALOSIUS	2011-05-23			
				appd	BIJU K PAUL	2011-05-23			type Product Customer Drawing
sheet index	revision sheet								

PRODUCT NUMBER
50006-XX045
50006-XX045LF

FOR PRODUCT NUMBERS 50006-XX045 AND 50006-XX045LF ONLY

	1	5	10	15	20	25	30	
C	■							
B								
A								
PIN	1							
	31	35	40	45	50	55	60	■

NOTES FOR 50006-XX045 AND 50006-XX045LF ONLY:

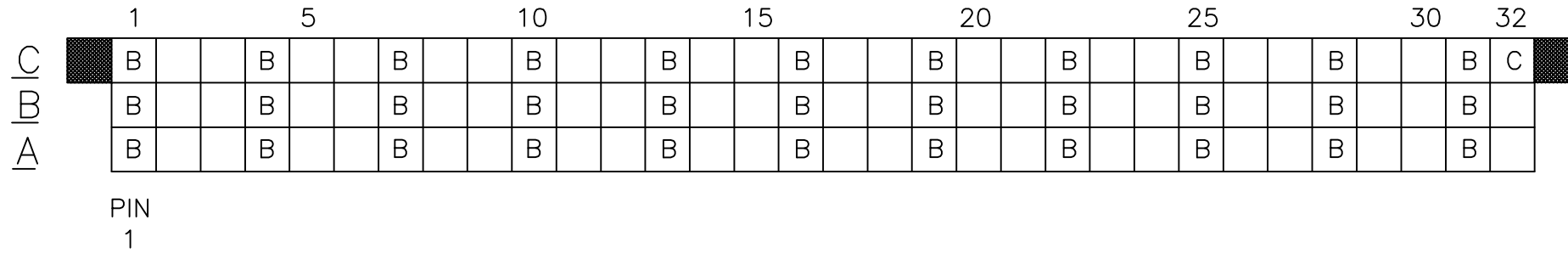
- ALL POSITIONS ARE LOADED WITH "A".
- COLUMN 1, ROW A IS DESIGNATED AS SIGNAL PIN 1, AS VIEWED FROM THE MATING FACE.
- SIGNAL DATA FOR 50006-XX045 AND 50006-XX045LF:
 SIZE 3 x 60
 TOTAL NO. OF POSITIONS - 180
 NO. OF POSITIONS LOADED - 180

ITEM KEY	QTY.	MATING LENGTH	TAIL LENGTH
A	180	.220 - 5.59	.597 - 15.16

mat'l. code		surface ISO 1302 ✓	tolerance ISO 406 ISO 1101	projection 	product family HPC
ltr	ecn no	dr	date	tolerances unless otherwise specified	title 3 ROW VERTICAL HEADER W/PRESS-FIT PINS, 0 G.P.
P				linear .XX±.01/.3 angles .XXX±.005/.13 0'±2' .XXXX±.0020/.051	
		dr	D.SHEAFER	1991-03-14	Amphenol FCi
		enr	S.CLARK	1991-03-14	
		chr	S ALOSIUS	2011-05-23	dwg no 50006
		appd	BIJU K PAUL	2011-05-23	
sheet index	revision sheet				sheet 8 of 17 size A3
					type Product Customer Drawing

PRODUCT NUMBER
50006-XX049
50006-XX049LF

FOR PRODUCT NUMBER 50006-XX049 AND 50006-XX049LF ONLY



CUSTOMER NOTE: END GUIDE PINS ARE SUGGESTED IN YOUR APPLICATION TO PREVENT STUBBING OF THE .260/6.60 MATING LENGTH SIGNAL PINS.

NOTES FOR 50006-XX049 AND 50006-XX049LF ONLY:

- ALL POSITIONS ARE LOADED WITH "A" EXCEPT AS SHOWN.
- COLUMN 1, ROW A IS DESIGNATED AS SIGNAL PIN 1, AS VIEWED FROM THE MATING FACE.
- SIGNAL DATA FOR 50006-XX049 AND 50006-XX049LF:
 SIZE 3 x 32
 TOTAL NO. OF POSITIONS - 96
 NO. OF POSITIONS LOADED - 96

ITEM KEY	QTY.	MATING LENGTH	TAIL LENGTH
A	62	.220 / 5.59	.177 / 4.50
B	33	.260 / 6.60	.177 / 4.50
C	1	.180 / 4.57	.177 / 4.50

mat'l. code		surface ISO 1302 ✓		tolerance ISO 406 ISO 1101		projection 		product family HPC	
ltr	ecn no	dr	date	tolerances unless otherwise specified		INCH/MM		title	
P				angles	linear	scale 1:1		3 ROW VERTICAL HEADER W/PRESS-FIT PINS, 0 G.P.	
				0°±2'	.XX±.01/.3 .XXX±.005/.13 .XXXX±.0020/.051			dwg no	
				dr	D.SHEAFER 1991-03-14	Amphenol FCi		sheet 9 of 17	
				enr	S.CLARK 1991-03-14			50006	
				chr	S ALOSIOUS 2011-05-23			A3	
				appd	BIJU K PAUL 2011-05-23			type Product Customer Drawing	
sheet index	revision sheet								

PRODUCT NUMBER
 50006-XX053
 50006-XX053LF

FOR PRODUCT NUMBERS 50006-XX053 AND 50006-XX053LF ONLY

	1		5		10		15		20		25												
C			C																				
B			C	C	B																C	C	
A																							
PIN	1																						
	26		30		35		40		45												C	C	C
																						C	C

CUSTOMER NOTE: END GUIDE PINS ARE SUGGESTED IN YOUR APPLICATION TO PREVENT STUBBING OF THE .260 MATING LENGTH SIGNAL PINS.

1. ALL POSITIONS ARE LOADED WITH "A" EXCEPT AS SHOWN.
2. COLUMN 1, ROW A IS DESIGNATED AS SIGNAL PIN 1, AS VIEWED FROM THE MATING FACE.
3. SIGNAL DATA FOR 50006-XX053 AND 50006-XX053LF:
 SIZE 3 x 50
 TOTAL NO. OF POSITIONS - 150
 NO. OF POSITIONS LOADED - 150

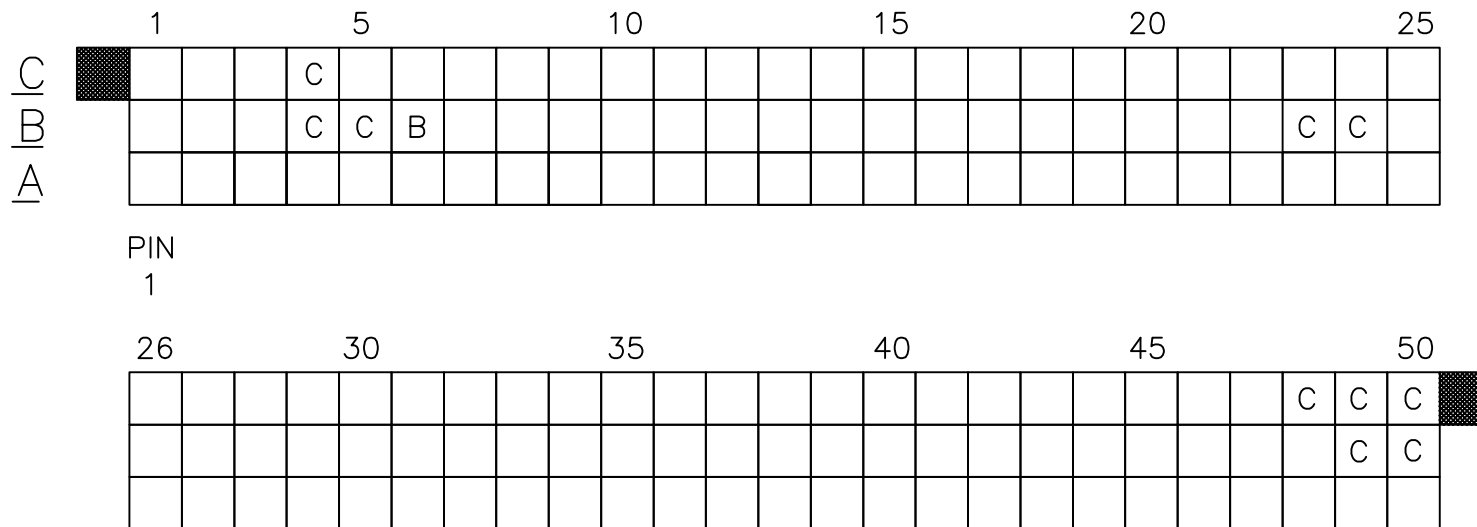
ITEM KEY	QTY.	MATING LENGTH	TAIL LENGTH
A	139	.220 / 5.59	.250 / 6.35
B	1	.180 / 4.57	.250 / 6.35
C	10	.260 / 6.60	.250 / 6.35

mat'l. code			surface ISO 1302 <input checked="" type="checkbox"/>		tolerance ISO 406 ISO 1101		projection 		product family HPC				
ltr	ecn no	dr	date		tolerances unless otherwise specified		INCH/MM		title 3 ROW VERTICAL HEADER W/PRESS-FIT PINS, 0 G.P.				
P					angles	linear							
					0'±2'	.xxx±.005/.13	.xxx±.01/.3	scale 1:1					
					dr	D.SHEAFER	1991-03-14	Amphenol FCi		dwg no		sheet 10 of 17	size
					enr	S.CLARK	1991-03-14			50006		A3	
					chr	S ALOSIOUS	2011-05-23			type Product Customer Drawing			
					appd	BIJU K PAUL	2011-05-23						
sheet index	revision sheet												

Amphenol
FCi
Copyright AFCi

PRODUCT NUMBER
50006-XX054
50006-XX054LF

FOR PRODUCT NUMBERS 50006-XX054 AND 50006-XX054LF ONLY



CUSTOMER NOTE: END GUIDE PINS ARE SUGGESTED IN YOUR APPLICATION TO PREVENT STUBBING OF THE .260 MATING LENGTH SIGNAL PINS.

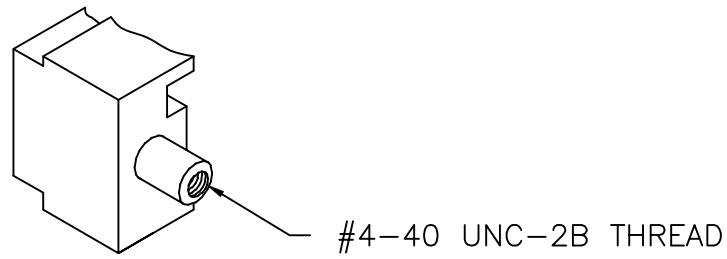
NOTES FOR 50006-XX054 AND 50006-XX054LF ONLY:

1. ALL POSITIONS ARE LOADED WITH "A" EXCEPT AS SHOWN.
2. COLUMN 1, ROW A IS DESIGNATED AS SIGNAL PIN 1, AS VIEWED FROM THE MATING FACE.
3. SIGNAL DATA FOR 50006-XX054 AND 50006-XX054LF:
 SIZE 3 x 50
 TOTAL NO. OF POSITIONS - 150
 NO. OF POSITIONS LOADED - 150

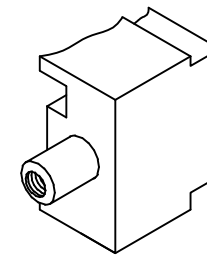
ITEM KEY	QTY.	MATING LENGTH	TAIL LENGTH
A	139	.220 / 5.59	.561 / 14.25
B	1	.180 / 4.57	.521 / 13.23
C	10	.260 / 6.60	.601 / 15.27

mat'l. code		surface ISO 1302 ✓	tolerance ISO 406 ISO 1101	projection 	product family HPC
ltr	ecn no	dr	date	tolerances unless otherwise specified	title 3 ROW VERTICAL HEADER W/PRESS-FIT PINS, 0 G.P.
P				linear .XX±.01/.3 angles .XXX±.005/.13 0'±2' .XXX±.0020/.051	
				INCH/MM scale 1:1	dwg no 50006
				Amphenol FCi	sheet 11 of 17 size A3
				type Product Customer Drawing	
sheet index	revision sheet				

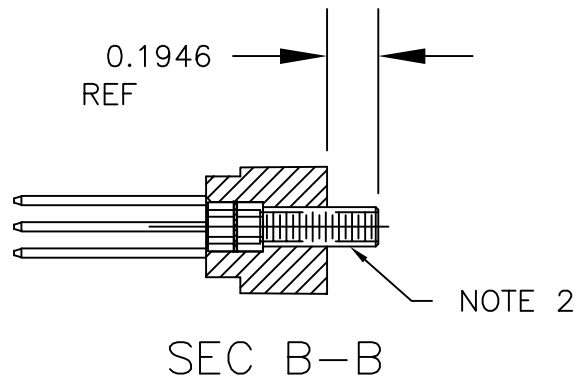
PRODUCT NUMBER
50006-XX055
50006-XX055LF



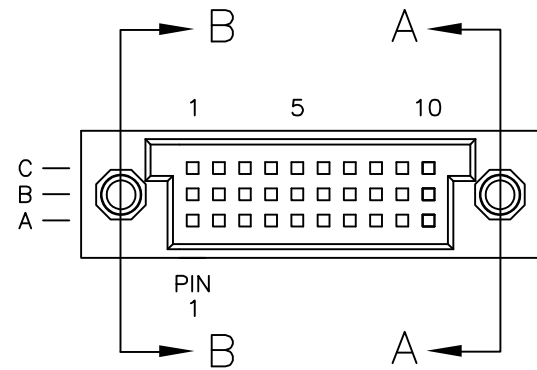
L.E.



R.E.

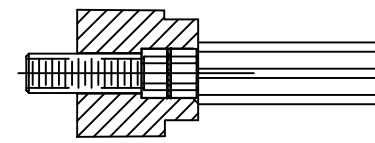


SEC B-B



C
B
A

PIN
1



SEC A-A

FOR PRODUCT NUMBERS 50006-XX055 AND 50006-XX055LF

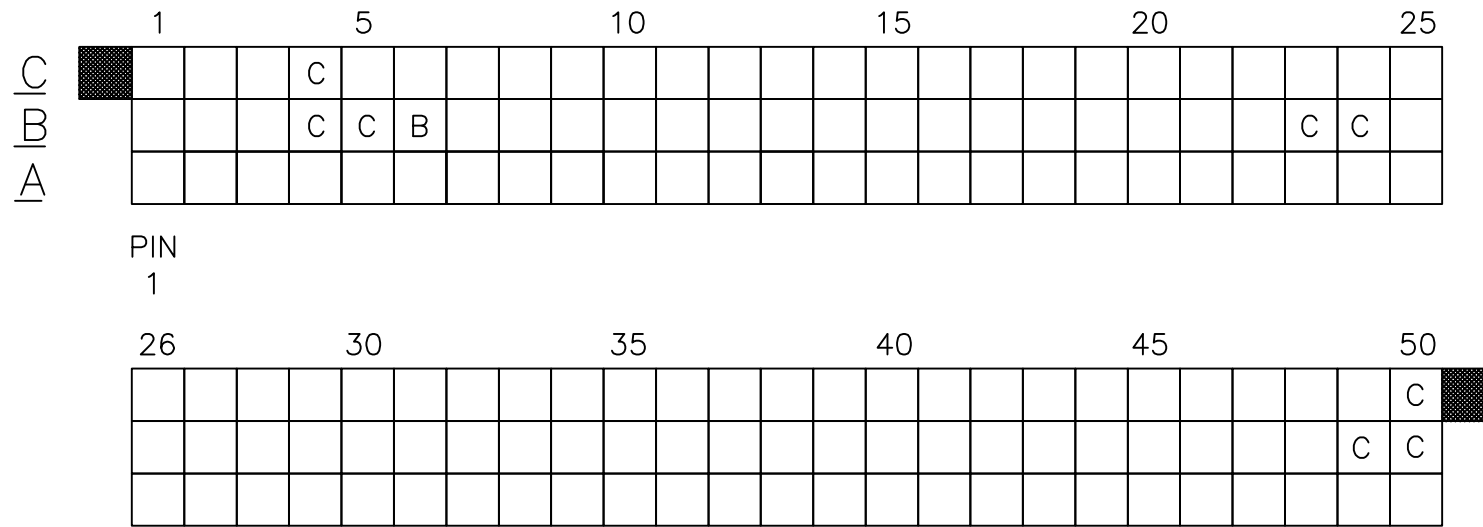
NOTES:

- IDENTICAL TO P/N 50006-1030D EXCEPT AS SHOWN W/JACK SCREW INSERTS INSTALLED ON BOTH ENDS.
- HARDWARE P/N 95729-001.

mat'l. code		surface ISO 1302 ✓		tolerance ISO 406 ISO 1101		projection INCH/MM		product family HPC	
ltr	ecn no	dr	date	tolerances unless otherwise specified		INCH/MM		title	
P				angles	linear	scale 1:1		3 ROW VERTICAL HEADER W/PRESS-FIT PINS, 0 G.P.	
				0°±2'	.XX±.01/.3 .XXX±.005/.13 .XXXX±.0020/.051			dwg no	
				dr	D.SHEAFER	1991-03-14	Amphenol FCi		sheet 12 of 17
				enr	S.CLARK	1991-03-14	50006		A3
				chr	S ALOSIUS	2011-05-23	Product Customer Drawing		
				appd	BIJU K PAUL	2011-05-23			
sheet index	revision sheet								

PRODUCT NUMBER
50006-XX056
50006-XX056LF

FOR PRODUCT NUMBER 50006-XX056 AND 50006-XX056LF ONLY



CUSTOMER NOTE: END GUIDE PINS ARE SUGGESTED IN YOUR APPLICATION TO PREVENT STUBBING OF THE .260 MATING LENGTH SIGNAL PINS.

NOTES FOR 50006-XX056 AND 50006-XX056LF ONLY:

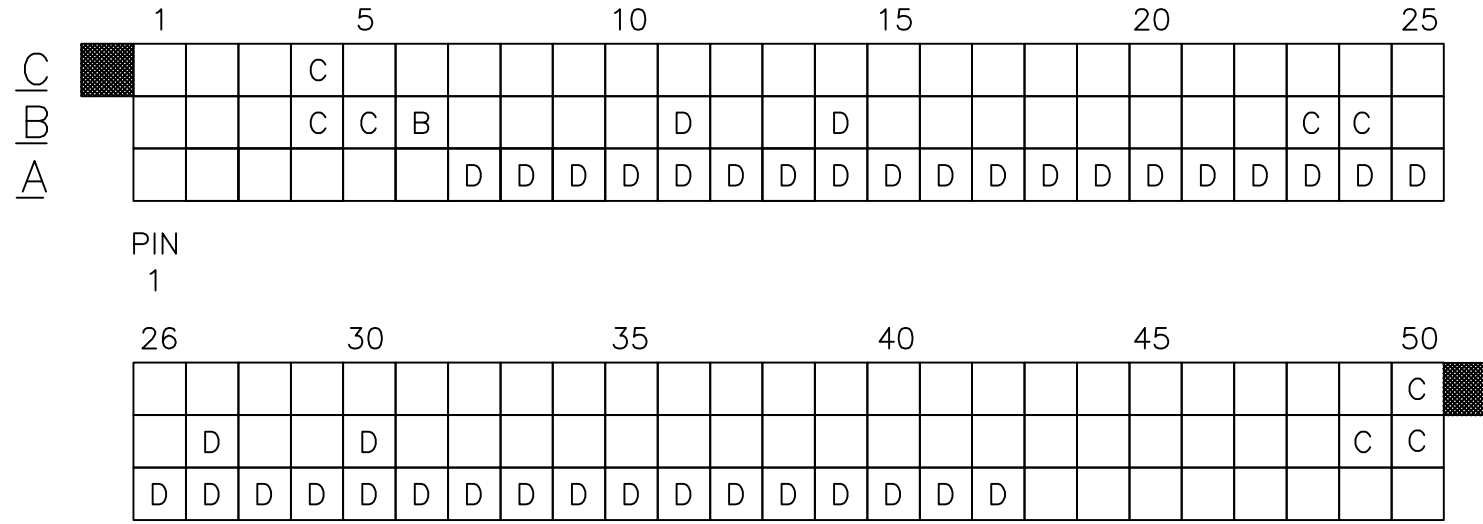
- ALL POSITIONS ARE LOADED WITH "A" EXCEPT AS SHOWN.
- COLUMN 1, ROW A IS DESIGNATED AS SIGNAL PIN 1, AS VIEWED FROM THE MATING FACE.
- SIGNAL DATA FOR 50006-XX056 AND 50006-XX056LF:
 SIZE 3 x 50
 TOTAL NO. OF POSITIONS - 150
 NO. OF POSITIONS LOADED - 150

ITEM KEY	QTY.	MATING LENGTH	TAIL LENGTH
A	141	.220 / 5.59	.177 / 4.50
B	1	.180 / 4.57	.177 / 4.50
C	8	.260 / 6.60	.177 / 4.50

mat'l. code		surface ISO 1302 ✓		tolerance ISO 406 ISO 1101		projection 		product family HPC	
ltr	ecn no	dr	date	tolerances unless otherwise specified		INCH/MM		title	
P				angles	linear	scale 1:1		3 ROW VERTICAL HEADER W/PRESS-FIT PINS, 0 G.P.	
				0°±2'	.XX±.01/.3 .XXX±.005/.13 .XXXX±.0020/.051			dwg no 50006	
				dr	D.SHEAFER	1991-03-14	Amphenol FCi		sheet 13 of 17
				enr	S.CLARK	1991-03-14			size A3
				chr	S ALOSIOUS	2011-05-23			
				appd	BIJU K PAUL	2011-05-23			type Product Customer Drawing
sheet index	revision sheet								

PRODUCT NUMBER
50006-XX057
50006-XX057LF

FOR PRODUCT NUMBER 50006-XX057 AND 50006-XX057LF



CUSTOMER NOTE: END GUIDE PINS ARE SUGGESTED IN YOUR APPLICATION TO PREVENT STUBBING OF THE .260 MATING LENGTH SIGNAL PINS.

NOTES FOR 50006-XX057 AND 50006-XX057LF ONLY:

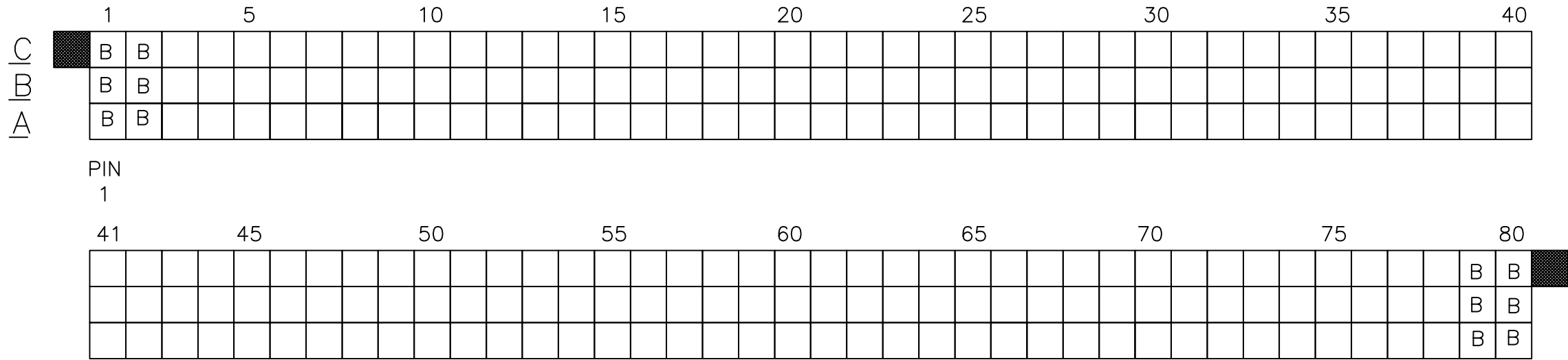
1. ALL POSITIONS ARE LOADED WITH "A" EXCEPT AS SHOWN.
2. COLUMN 1, ROW A IS DESIGNATED AS SIGNAL PIN 1, AS VIEWED FROM THE MATING FACE.
3. SIGNAL DATA FOR 50006-XX057 AND 50006-XX057LF:
 SIZE 3 x 50
 TOTAL NO. OF POSITIONS - 150
 NO. OF POSITIONS LOADED - 150

ITEM KEY	QTY.	MATING LENGTH	TAIL LENGTH
A	101	.220 / 5.59	.561 / 14.25
B	1	.180 / 4.57	.521 / 13.23
C	8	.260 / 6.60	.601 / 15.27
D	40	.220 / 5.59	.177 / 4.50

mat'l. code		surface ISO 1302 ✓		tolerance ISO 406 ISO 1101		projection 		product family HPC	
ltr	ecn no	dr	date	tolerances unless otherwise specified		INCH/MM		title	
P				angles	linear	scale 1:1		3 ROW VERTICAL HEADER W/PRESS-FIT PINS, 0 G.P.	
				0°±2'	.XX±.01/.3 .XXX±.005/.13 .XXXX±.0020/.051			dwg no 50006	
				dr	D.SHEAFER	1991-03-14	Amphenol FCi		sheet 14 of 17
				enr	S.CLARK	1991-03-14			size A3
				chr	S ALOSIOUS	2011-05-23			
				appd	BIJU K PAUL	2011-05-23			type Product Customer Drawing
sheet index	revision sheet								

PRODUCT NUMBER
50006-XX058
50006-XX058LF

FOR PRODUCT NUMBER 50006-XX058 AND 50006-XX058LF



CUSTOMER NOTE: END GUIDE PINS ARE SUGGESTED IN YOUR APPLICATION TO PREVENT STUBBING OF THE .260 MATING LENGTH SIGNAL PINS.

NOTES FOR 50006-XX058 AND 50006-XX058LF ONLY:

1. ALL POSITIONS ARE LOADED WITH "A" EXCEPT AS SHOWN.
2. COLUMN 1, ROW A IS DESIGNATED AS SIGNAL PIN 1, AS VIEWED FROM THE MATING FACE.
3. SIGNAL DATA FOR 50006-XX058 AND 50006-XX058LF:
 SIZE 3 x 80
 TOTAL NO. OF POSITIONS - 240
 NO. OF POSITIONS LOADED - 240

ITEM KEY	QTY.	MATING LENGTH	TAIL LENGTH
A	228	.210 / 5.33	.533 / 13.54
B	12	.244 / 6.20	.533 / 13.54

mat'l. code		surface ISO 1302 ✓		tolerance ISO 406 ISO 1101		projection 		product family HPC	
ltr	ecn no	dr	date	tolerances unless otherwise specified		INCH/MM		title	
P				angles	linear	scale 1:1		3 ROW VERTICAL HEADER W/PRESS-FIT PINS, 0 G.P.	
				0°±2'	.XX±.01/.3 .XXX±.005/.13 .XXXX±.0020/.051			dwg no	
				dr	D.SHEAFER	1991-03-14	Amphenol FCi		sheet 15 of 17
				enr	S.CLARK	1991-03-14	50006		size A3
				chr	S ALOSIUS	2011-05-23	Product Customer Drawing		
				appd	BIJU K PAUL	2011-05-23			
sheet index	revision sheet								

PRODUCT NUMBER
50006-XX059
50006-XX059LF

FOR PRODUCT NUMBER 50006-XX059 AND 50006-XX059LF

	1	5	10	15	20	25	30	35	40	
C	B	B								
B	B	B								
A	B	B								
	PIN 1									
	41	45	50	55	60	65	70	75	80	
										B B
										B B
										B B

CUSTOMER NOTE: END GUIDE PINS ARE SUGGESTED IN YOUR APPLICATION TO PREVENT STUBBING OF THE .260 MATING LENGTH SIGNAL PINS.

NOTES FOR 50006-XX059 AND 50006-XX059LF ONLY:

- ALL POSITIONS ARE LOADED WITH "A" EXCEPT AS SHOWN.
- COLUMN 1, ROW A IS DESIGNATED AS SIGNAL PIN 1, AS VIEWED FROM THE MATING FACE.
- SIGNAL DATA FOR 50006-XX059 AND 50006-XX059LF:
 SIZE 3 x 80
 TOTAL NO. OF POSITIONS - 240
 NO. OF POSITIONS LOADED - 240

ITEM KEY	QTY.	MATING LENGTH	TAIL LENGTH
A	228	.210 / 5.33	.660 / 16.76
B	12	.245 / 6.22	.660 / 16.76

mat'l. code		surface ISO 1302 ✓		tolerance ISO 406 ISO 1101		projection 		product family HPC	
ltr	ecn no	dr	date	tolerances unless otherwise specified		INCH/MM		title	
P				angles	linear	scale 1:1		3 ROW VERTICAL HEADER W/PRESS-FIT PINS, 0 G.P.	
				0°±2'	.XX±.01/.3 .XXX±.005/.13 .XXXX±.0020/.051			dwg no	
				dr	D.SHEAFER 1991-03-14	Amphenol FCi		sheet 16 of 17 size	
				enr	S.CLARK 1991-03-14			50006 A3	
				chr	S ALOSIUS 2011-05-23			type	
				appd	BIJU K PAUL 2011-05-23			Product Customer Drawing	
sheet index	revision sheet								

PRODUCT NUMBER
50006-XX060LF

FOR PRODUCT NUMBER 50006-XX060LF ONLY

	1	5	10	15	20	25	30
C	A	A	A	A	A	A	A
B	A	A	A	A	A	A	A
A	A	A	A	A	A	A	A

PIN
1

	31	35	40	45	50	55
A	A	A	A	A	A	A
A	A	A	A	A	A	A

NOTES : FOR 50006-XX060LF ONLY:

- ALL POSITIONS ARE LOADED, EXCEPT OMITTS, AS SHOWN.
- COLUMN 1, ROW A IS DESIGNATED AS SIGNAL PIN 1, AS VIEWED FROM THE MATING FACE.
- SIGNAL DATA FOR 50006-XX060LF:
SIZE 3 x 55
TOTAL NO. OF POSITIONS - 165
NO. OF POSITIONS LOADED - 107

ITEM KEY	QTY.	MATING LENGTH	TAIL LENGTH
A	107	.220 / 5.59	.250 / 6.35
BLANK	58	N/A	N/A

mat'l. code		surface ISO 1302 ✓	tolerance ISO 406 ISO 1101	projection 	product family HPC
ltr	ecn no	dr	date	tolerances unless otherwise specified	title 3 ROW VERTICAL HEADER W/PRESS-FIT PINS, 0 G.P.
B				linear .XX±.01/.3 .XXX±.005/.13 .XXXX±.0020/.051	
		angles 0°±2'		INCH/MM scale 1:1	dwg no 50006
		dr	M JACOB	2019-01-03	sheet 17 of 17
		enr	M JACOB	2019-01-03	size A3
		chr	M JACOB	2019-01-04	type Product Customer Drawing
		appd	BIJU K PAUL	2019-01-04	
sheet index	revision sheet				

X-ON Electronics

Largest Supplier of Electrical and Electronic Components

Click to view similar products for [Hard Metric Connectors](#) category:

Click to view products by [Amphenol](#) manufacturer:

Other Similar products are found below :

[10146110-VR5C](#) [6345127-1](#) [646916-9](#) [6469658-1](#) [853016](#) [973108](#) [1-2000713-0](#) [1-2000713-2](#) [1-2000713-3](#) [120646-1](#) [134187](#) [1645343-1](#)
[1645456-1](#) [1645564-3](#) [1645594-1](#) [1645601-1](#) [1934822-1](#) [2000829-2](#) [2000985-2](#) [223085-1](#) [278071110010833](#) [1645179-1](#) [1645245-1](#)
[1645457-1](#) [1645525-1](#) [1645570-1](#) [1645596-1](#) [17-8072-125-000-863+](#) [1857470-1](#) [1934275-1](#) [1934289-1](#) [1934759-1](#) [2000670-2](#) [2000673-1](#)
[2000843-2](#) [2000984-2](#) [204975](#) [2170292-2](#) [2-536642-6](#) [3-100668-0](#) [3-106015-1](#) [352188-1](#) [352629-1](#) [3-646346-0](#) [3-646356-0](#) [3-646457-0](#) [3-646529-0](#) [3-646530-0](#) [5120823-1](#) [5120899-1](#)