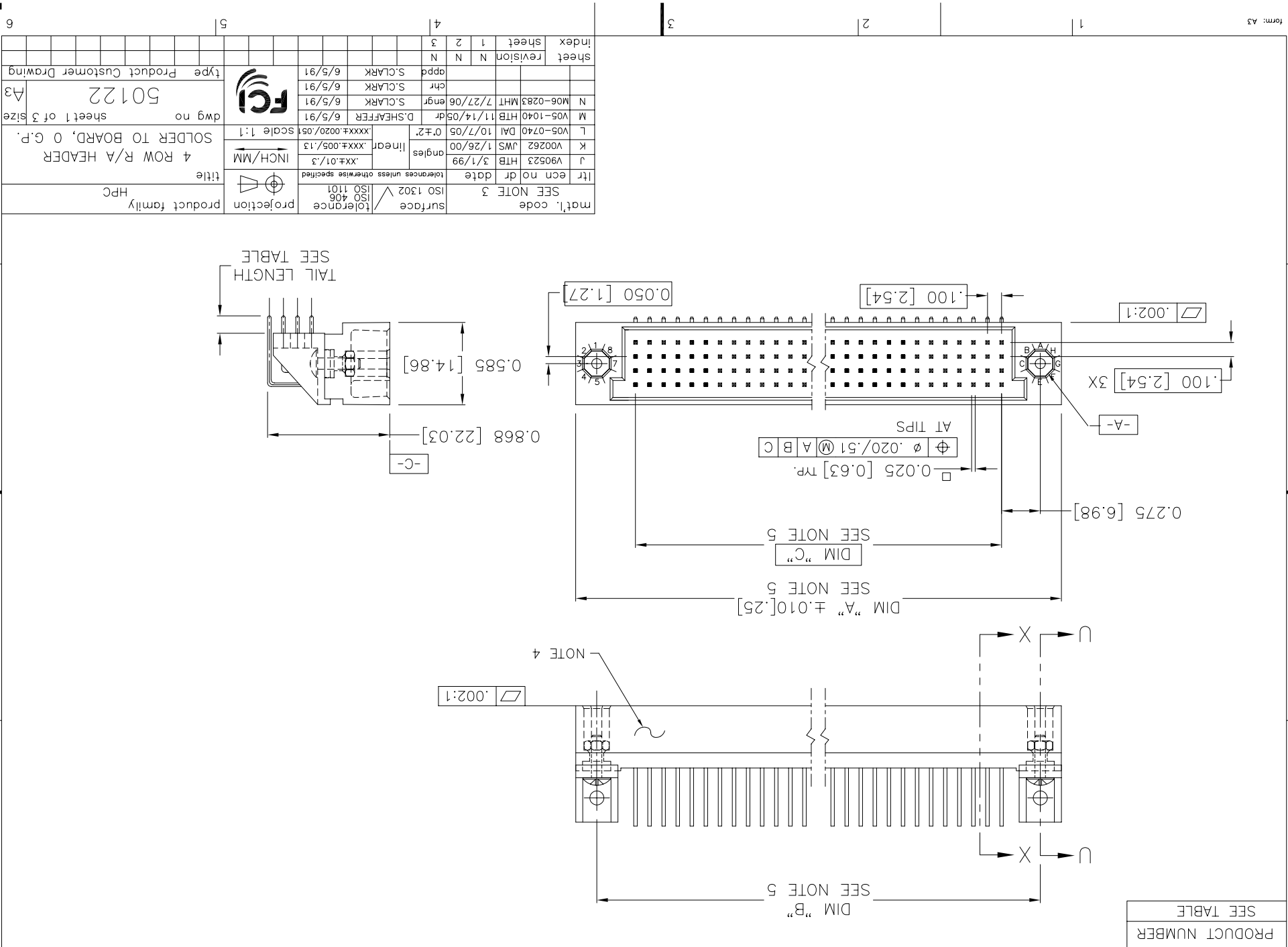
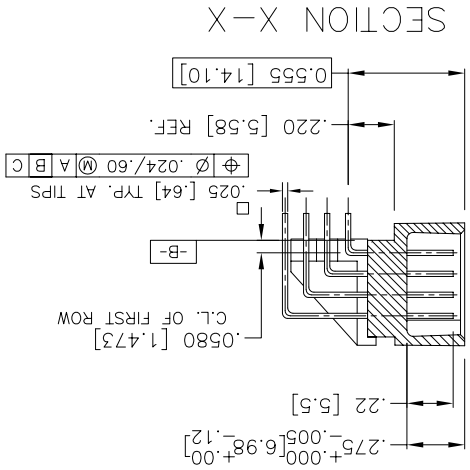
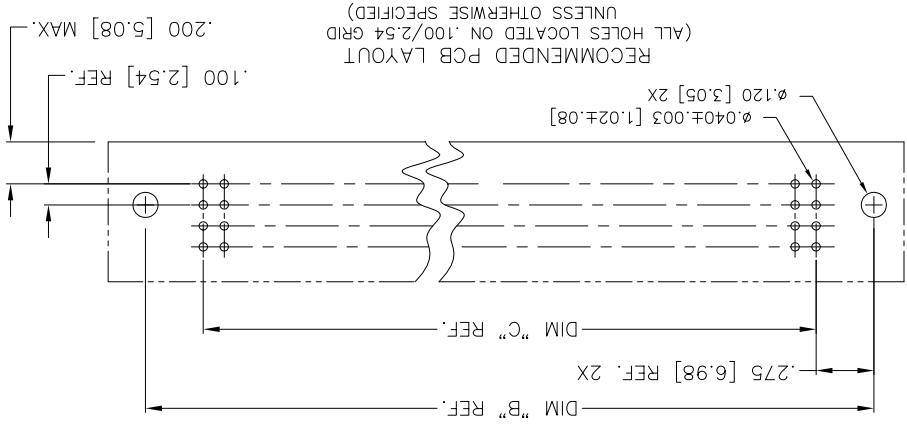
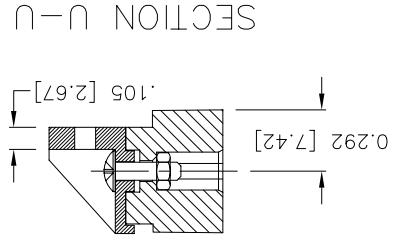


PRODUCT NUMBER
SEE TABLE



mat'l. code		surface		tolerance		projection		product family	
SEE NOTE 3		ISO 1302		ISO 406 ISO 1101		HPC			
itr	ecn no	dr	date	tolerances unless otherwise specified		title		4 ROW R/A HEADER	
J	V90523	HTB	3/1/99	.XX±.01/.3		INCH/MM		SOLDER TO BOARD, 0 G.P.	
K	V00262	JWS	1/26/00	.XXXX.005/.13		scale 1:1		sheet 1 of 3 size	
L	V05-0740	DAI	10/7/05	.XXXX.0020/.05		type		Product Customer Drawing	
M	V05-1040	HTB	11/14/05	D.SHEAFFER		6/5/91		50122	
N	M06-0283	MHT	7/27/06	engr		6/5/91		A3	
		chr		S.CLARK		6/5/91			
		pppd		S.CLARK		6/5/91			
sheet	revision	N	N	N	N	index		sheet	
1	2	3	4	5	6	5		6	

PRODUCT NO.	SEE TABLE
-------------	-----------



mat'l. code	ISO 1302	surface	ISO 1302	tolerance	ISO 406	ISO 1101	projection	product family	HPC
itr	ecn no	dr	date	tolerances unless otherwise specified	inches	mm	projection	title	4 ROW R/A HEADER
N		angles	0°±.2	inches .xxxx±.005/13	mm .xxxx±.0020/05	mm	projection	title	SOLDER TO BOARD, 0 G.P.
scale	1:1	dr	D.SHEAFFER	6/5/91	engr	S.CLARK	6/5/91	dwg no	50122
sheet	revision	ppd	S.CLARK	6/5/91	chr	S.CLARK	6/5/91	type	Product Customer Drawing
index	sheet							sheet 2 of 3 size	A3

PRODUCT NUMBER	POSITIONS	REF.	TAIL LENGTH	TERMINAL
50122-1YYYH	YYY		.180/4.57	30µ"/.76µ GOLD
50122-1YYYJ	YYY		.120/3.05	30µ"/.76µ GOLD
50122-3YYYH	YYY		.180/4.57	50µ"/1.27µ GOLD
50122-3YYYJ	YYY		.120/3.05	50µ"/1.27µ GOLD
50122-5YYYH	YYY		.180/4.57	30µ"/.76µ GXT
50122-5YYYHLF	YYY		.180/4.57	30µ"/.76µ GXT
50122-5YYYJ	YYY		.120/3.05	30µ"/.76µ GXT
50122-5YYYJLF	YYY		.120/3.05	30µ"/.76µ GXT

NOTES:

- PRODUCT NUMBERING CODE:
50122 - X YYY Z LF
LEAD FREE (OPTIONAL)
TAIL LENGTH SEE TABLE
NO. OF POSITIONS SEE NOTE 2
PLATING SEE TABLE
BASE NUMBER
PRODUCT NUMBERING CODE FOR
SELECT LEAD PART NUMBERS:
50122 - XXXXX LF
LEAD FREE (OPTIONAL)
SEQUENCE NUMBER
ALWAYS 'XX'
BASE NUMBER
- THIS PRODUCT IS CONFIGURED IN SIZES OF 6 THRU 100 COLUMNS IN INCREMENTS OF ONE.
i.e.: 6,7,8,9,.....98,99,100.
- HOUSING MATERIAL: GLASS AND MINERAL FILLED
UL94V-0. COLOR: BLACK.
PIN MATERIAL: PHOS. BRONZE
- MANUFACTURE'S NAME, P/N, AND LOT CODE
BUS-12-108.
- LENGTH FORMULAS:
DIM "A" = .100/2.54 x NO. OF COLUMNS + .75/19.1
DIM "B" = .100/2.54 x NO. OF COLUMNS + .450/11.43
DIM "C" = .100/2.54 x NO. OF COLUMNS - .100/2.54

- THIS PRODUCT (WITH "LF" SUFFIX) MEETS EUROPEAN UNION DIRECTIVES AND OTHER COUNTRY REGULATIONS AS DESCRIBED IN GS-22-008.
- THIS HOUSING WILL WITHSTAND EXPOSURE TO 260° C PEAK TEMPERATURE FOR 10-30 SECONDS IN A CONVECTION, INFRA-RED OR VAPOR PHASE REFLOW OVEN.

mat'l. code	SEE NOTE 3	surface	ISO 1302	tolerance	ISO 406 ISO 1101	projection	product family	HPC
itr	ecn no	dr	date	tolerances unless otherwise specified	XXXX.01/.3	INCH/MM	title	4 ROW R/A HEADER SOLDER TO BOARD, 0 G.P.
	angles	inlet	xxxx.005/.13		xxxx.0020/.05	scale 1:1	dwg no	50122
		dr	D.SHEAFFER	6/5/91			sheet revision	6/5/91
		engr	S.CLARK	6/5/91			index	
		chr	S.CLARK	6/5/91			sheet	
		pppd	S.CLARK	6/5/91				



X-ON Electronics

Largest Supplier of Electrical and Electronic Components

Click to view similar products for [Hard Metric Connectors](#) category:

Click to view products by [Amphenol](#) manufacturer:

Other Similar products are found below :

[10146110-VR5C](#) [6345127-1](#) [646916-9](#) [6469658-1](#) [853016](#) [973108](#) [1-2000713-0](#) [1-2000713-2](#) [1-2000713-3](#) [120646-1](#) [134187](#) [1645343-1](#)
[1645456-1](#) [1645564-3](#) [1645594-1](#) [1645601-1](#) [1934822-1](#) [2000829-2](#) [2000985-2](#) [223085-1](#) [278071110010833](#) [1645179-1](#) [1645245-1](#)
[1645457-1](#) [1645525-1](#) [1645570-1](#) [1645596-1](#) [17-8072-125-000-863+](#) [1857470-1](#) [1934275-1](#) [1934289-1](#) [1934759-1](#) [2000670-2](#) [2000673-1](#)
[2000843-2](#) [2000984-2](#) [204975](#) [2170292-2](#) [2-536642-6](#) [3-100668-0](#) [3-106015-1](#) [352188-1](#) [352629-1](#) [3-646346-0](#) [3-646356-0](#) [3-646457-0](#) [3-646529-0](#) [3-646530-0](#) [5120823-1](#) [5120899-1](#)