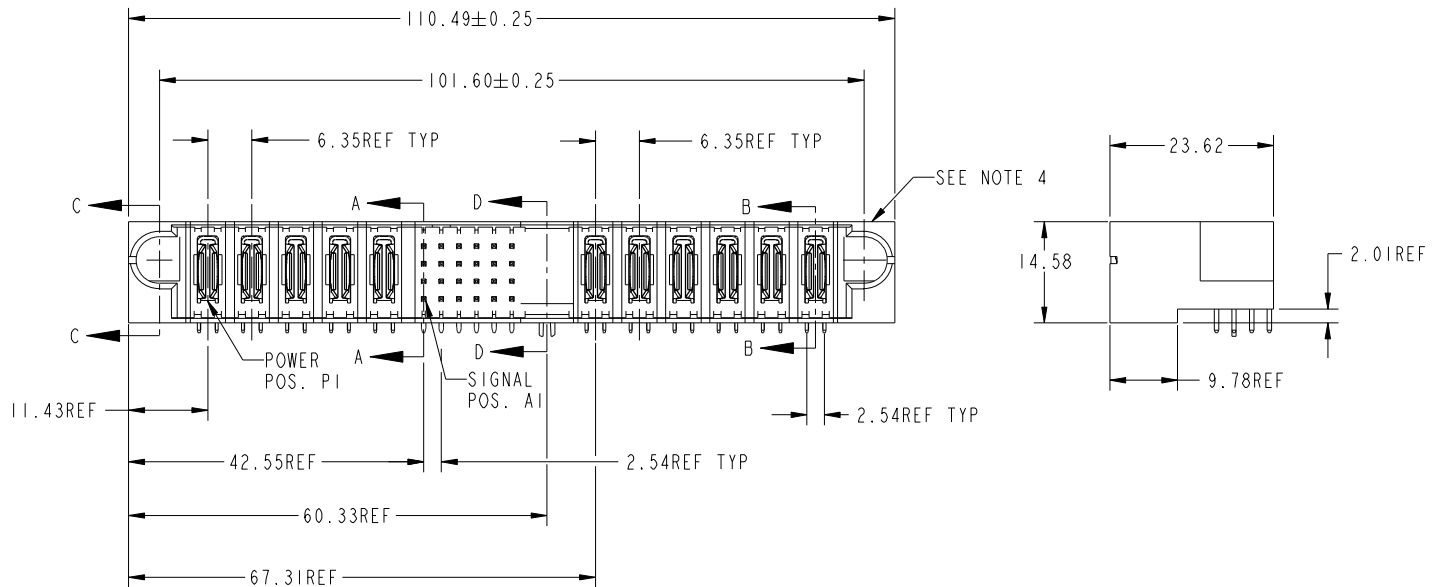


Tous droits strictement reserves. Reproduction ou communication a des tiers interdite sous quelque forme que ce soit sans autorisation écrite du propriétaire. Propriete de c FCI. Droits de reproduction FCI.



All rights strictly reserved. Reproduction or issue to third parties in any form whatever is not permitted without written authority from the proprietor. Property of FCI. Copyright FCI.

PRODUCT NUMBER
SEE SHEET 3



mat'l code				SEE NOTES		tolerances unless otherwise specified		CUSTOMER		FCI	
ltr	ecn no.	dr	date	linear	0.X ± 0.3		COPY		www.fciconnect.com		
M	D605-0112	GuoJM	05/17/05		0.XX ± 0.13		projection		title		
N	D605-0159	GuoJM	06/14/05		.XXX ± .051				5P + 24S + 1M + 6P RIGHT ANGLE SOLDER HEADER		
P	D605-0338	SW	09/19/05	angles	0° ± 2°				product family PWRBLADE code		
R	D605-0397	CS	10/20/05		dr		D. WOLFORD 01-28-99		size 213		
S	D605-0454	CS	11/11/05	enr		J. BROWN 01-28-99		dwg no		sheet	
T	D608-0239	JC	09/12/08	chr		J. BROWN 01-28-99		scale		1 of 4	
				appd		J. BROWN 01-28-99		1:1		51624	
sheet index	revision sheet	1	2	3	4						

cage code 22526

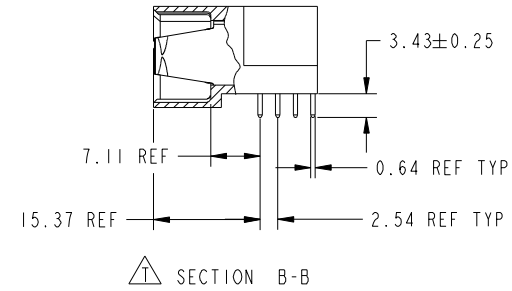
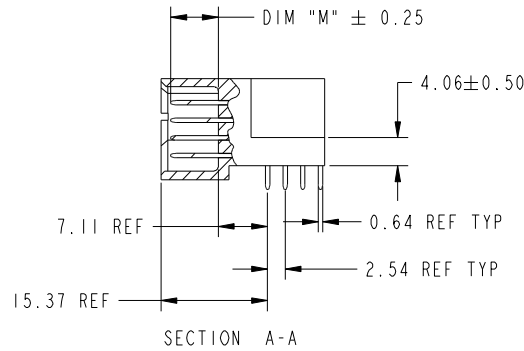
Pro/E

Tous droits strictement réservés. Reproduction ou communication a des tiers interdite sous quelque forme que ce soit sans autorisation écrite du propriétaire. Propriete de c FCI. Droits de reproduction FCI.



All rights strictly reserved. Reproduction or issue to third parties in any form whatever is not permitted without written authority from the proprietor. Property of FCI. Copyright FCI.

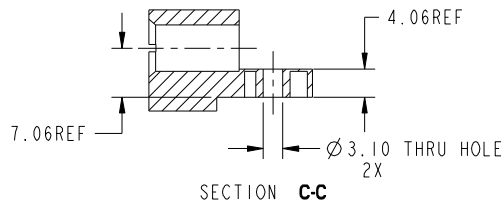
PRODUCT NUMBER
51624-XX00X--
Note: (2)



- CONNECTOR NOTES:
- HOUSING MATERIAL: UL 94 V-0 GLASS FILLED HIGH TEMP THERMOPLASTIC
POWER CONTACT MATERIAL: COPPER ALLOY
SIGNAL CONTACT MATERIAL: COPPER ALLOY
 - PLATING:
SEE ITEM 1 & 2 IN PRINT 10064183 FOR PLATING SPEC OF 51624-XX00X AND 51624-XX00XLF RESPECTIVELY

- PRODUCT SPECIFICATION GS-12-149
- "MANUFACTURER" NAME, P/N, AND DATE CODE TO APPEAR ON THIS SURFACE

- PCB NOTES:
- ALL DIMENSIONS ARE BASIC UNLESS OTHERWISE SPECIFIED.
 - ALL THROUGH HOLES ARE LOCATED WITH A TRUE POSITION OF 0.004 [0.10]
 - ALL HOLE DIAMETERS ARE FINISHED HOLE SIZE
 - Ø 0.098 [2.49] AND Ø 0.126 [3.20] THROUGH HOLES ARE UNPLATED.
 - Ø 0.0453 ± 0.0010 [1.151 ± 0.025] DRILLED HOLES PLATED WITH 0.0003 [0.008] MIN SnPb OVER 0.001 [0.03] TO 0.003 [0.08] Cu PLATING TO ACHIEVE A Ø 0.040 ± 0.003 [1.02 ± 0.07] HOLE.
 - A \triangle SYMBOL WILL BE NEXT TO ANY DIMENSION, VIEW, OR NOTE WHICH HAS BEEN MODIFIED WITH THE CURRENT DRAWING REVISION.



mat'l code		SEE NOTES		tolerances unless otherwise specified		CUSTOMER		FCI	
ltr	ecm no.	dr	date	linear	0.X ± 0.3	COPY		www.fciconnect.com	
T				angles	0.XX ± 0.13	projection		title	
				dr	.XXX ± .051	0° ± 2°		5P + 24S + 1M + 6P RIGHT ANGLE SOLDER HEADER	
				enr	D. WOLFORD 01-28-99	MIM		product family PWRBLADE code	
				chr	J. BROWN 01-28-99	scale		size 213	
				appd	J. BROWN 01-28-99	1:1		dwg no 51624 sheet	
sheet index		revision sheet						2 of 4	

cage code 22526

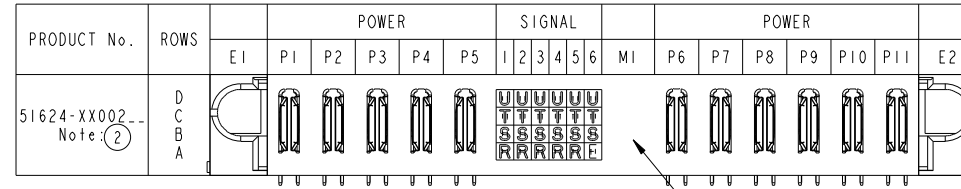
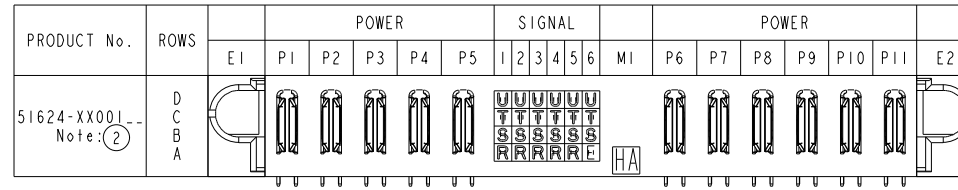
Pro/E

Tous droits strictement reserves. Reproduction ou communication a des tiers interdite sous quelque forme que ce soit sans autorisation écrite du propriétaire. Propriete de c FCI. Droits de reproduction FCI.

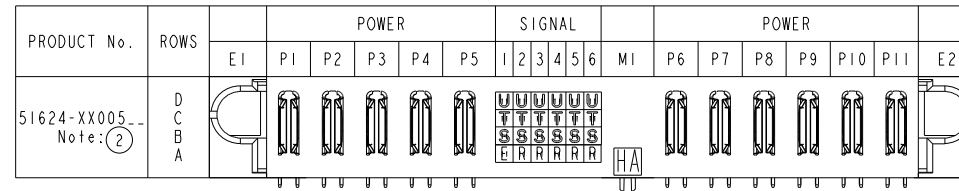


All rights strictly reserved. Reproduction or issue to third parties in any form whatever is not permitted without written authority from the proprietor. Property of FCI. Copyright FCI.

PRODUCT NUMBER
51624-XX00X:--
NOTE: (2)



NO HOLD DOWN



CODE	DIM "M" ±0.25	CONTACT TYPE
PA	[N/A]	POWER
R	[6.86]	SIGNAL
S	[6.86]	SIGNAL
T	[6.86]	SIGNAL
U	[6.86]	SIGNAL
E	[5.59]	SIGNAL
HA	[N/A]	HOLD-DOWN

mat'l code				SEE NOTES				tolerances unless otherwise specified				CUSTOMER		FCI	
ltr	ecn no.	dr	date	linear	0.X ±0.3			COPY		www.fciconnect.com		title		5P + 24S + 1M + 6P	
T				angles	0.XX ±0.13			projection		RIGHT ANGLE SOLDER HEADER		product family		PWRBLADE	
				dr	.XXX ±.051			MIM		product family		PWRBLADE		code	
				enr	0° ±2°			← MIM →		product family		PWRBLADE		code	
				chr	D. WOLFORD 01-28-99			scale		product family		PWRBLADE		code	
				appd	J. BROWN 01-28-99			1:1		product family		PWRBLADE		code	
					J. BROWN 01-28-99					product family		PWRBLADE		code	
sheet index	revision sheet									size		dwg no		213	
										A		51624		sheet	
														3 of 4	

1 | 2

Pro/E

3 |

cage code 22526

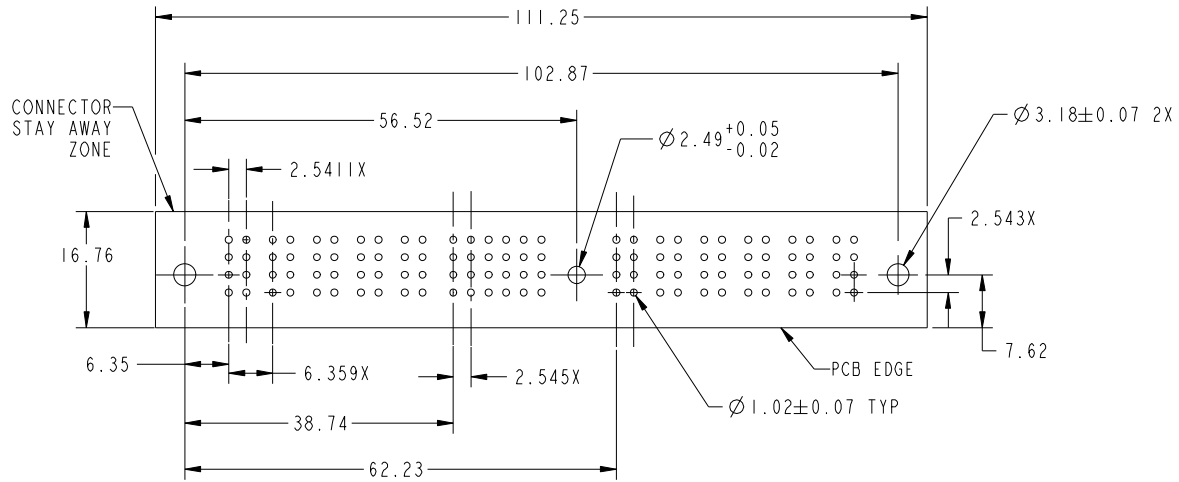
4

Tous droits strictement reserves. Reproduction ou communication a des tiers interdite sous quelque forme que ce soit sans autorisation ecrite du proprietaire. Propriete de c FCI. Droits de reproduction FCI.

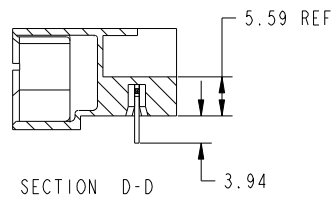


All rights strictly reserved. Reproduction or issue to third parties in any form whatever is not permitted without written authority from the proprietor. Property of FCI. Copyright FCI.

PRODUCT NUMBER
51624-XX00X--
NOTE: (2)



RECOMENDED PCB LAYOUT



CONFIDENTIAL

mat'l code				SEE NOTES		tolerances unless otherwise specified		CUSTOMER		www.fciconnect.com	
ltr	ecn no.	dr	date	linear	0.X ±0.3		COPY			title	
T					0.XX ±0.13		MIM			5P + 24S + 1M + 6P	
					.XXX ±.051					RIGHT ANGLE SOLDER HEADER	
				angles	0° ±2°		scale		product family		
					dr D. WOLFORD 01-28-99		1:1		PWRBLADE		
					enrg J. BROWN 01-28-99		A		code		
					chr J. BROWN 01-28-99				213		
				appd J. BROWN 01-28-99				size		sheet	
sheet index		revision sheet						dwg no		4	
								51624			

cage code 22526

Pro/E

X-ON Electronics

Largest Supplier of Electrical and Electronic Components

Click to view similar products for [Power to the Board](#) category:

Click to view products by [Amphenol](#) manufacturer:

Other Similar products are found below :

[6450171-4](#) [6450552-7](#) [6600323-8](#) [6643429-1](#) [6646040-2](#) [6651939-1](#) [6766604-1](#) [120959-1](#) [1393557-2](#) [1393532-2](#) [1393532-3](#) [1393532-4](#)
[1393557-1](#) [1600812-5](#) [1-6450861-2](#) [1744132-7](#) [1761122-1](#) [1766250-1](#) [1892109-1](#) [2-6450860-5](#) [2-6450870-0](#) [1-6450161-4](#) [1-6450850-6](#) [1-](#)
[6450869-6](#) [1645526-2](#) [1-6600130-0](#) [2005243-2](#) [TE34-12-16P-F0](#) [5-6450830-6](#) [5646956-4](#) [4-6450830-9](#) [4-6600333-3](#) [10125416-4050LF](#)
[6600320-3](#) [3-6450860-5](#) [1888123-2](#) [6450166-1](#) [6643978-1](#) [6766605-1](#) [N11444](#) [6651938-1](#) [6450810-7](#) [46437-1112](#) [1-1589677-8](#) [5646956-5](#)
[6450813-2](#) [6450129-4](#) [1645523-1](#) [PSS-06-01-T-S](#) [0465621864](#)