

PRODUCT NUMBER

5 3 6 1 1 - X X X - X X X X LF

PLATING

S=15μ [0.38μm] GOLD ON CONTACT AREA (NOTE 12)  
100μ [2.54μm] TIN ON TAIL

G=30μ [0.76μm] GOLD (NOTE 12)  
ON CONTACT AREA  
100μ [2.54μm] PURE TIN ON TAIL

LEAD FREE OPTION  
NOTE 9,10

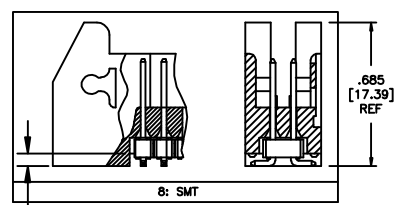
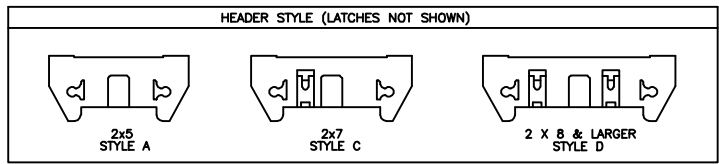
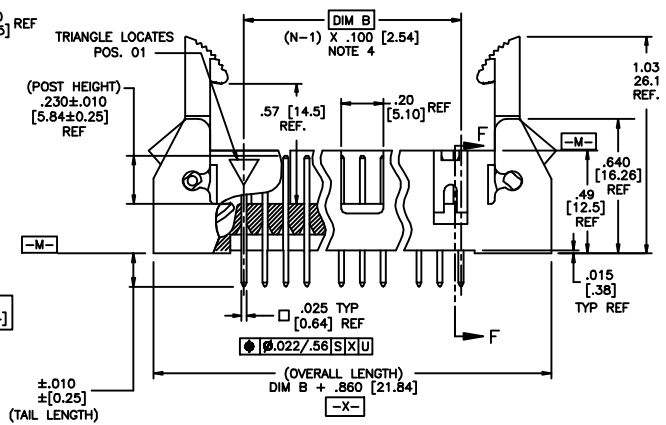
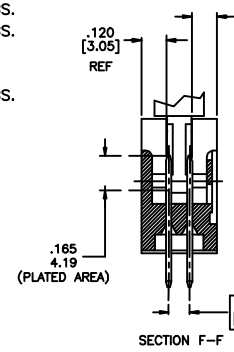
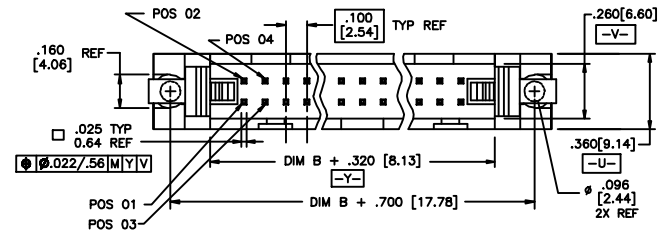
RETENTION  
R= RETENTION LEG  
NOTE 5

POLARIZATION  
NOTE 8

**TAIL LENGTH**

1=	.085/2.16	OBS.
2=	.112/2.84	OBS.
4=	.120/3.05	
6=	.150/3.81	
7=	.675/17.15	OBS.
8=	SMT	

DASH NO.	POSITIONS	HEADER STYLE
10	2 X 5	A
14	2 X 7	C
16	2 X 8	D
20	2 X 10	D
26	2 X 13	D
34	2 X 17	D
40	2 X 20	D
50	2 X 25	D



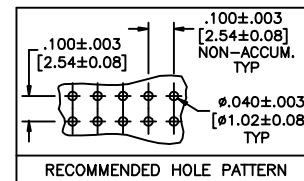
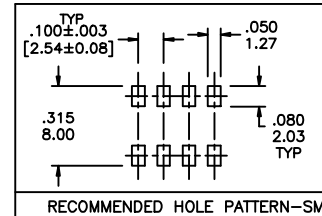
mat'l. code		surface		tolerance		projection		product family	
		ISO 9002		ISO 406		FIRST ANGLE		QUICKIE	
ltr		ecr no		date		tolerances unless otherwise specified		title	
D	VO2309	MEM	9/11/00			XX±.01/XX±0.3		.100/2.54cc EJECT LATCH	
E	C10004	MDF	2/26/01	angles		XXX±.005/XXX±0.13		SHOROUNDED VERTICAL HEADER	
F	M05-0089	ERE	5/20/05	linear		XXX±.0020/XXX±0.05		scale 1:1	
G	M07-0116	AGS	2/19/07	0°±2'				dwg no	
H	M08-0010	MHT	1/11/08	dr		D. INGRAM 7/12/99		sheet 1 of 2 size	
J	M08-0237	MHT	8/26/08	engr		L. GREEN 7/21/99		53611 A3	
K	M08-0273	MHT	9/26/08	chr		L. GREEN 7/21/99		type	
sheet		revision		K		K		Product Customer Drawing	
index		sheet		1		2			



Copyright FCI

NOTES:

- ① HOUSING MAT'L: HIGH TEMPERATURE THERMOPLASTIC. UL94V-0.  
COLOR : BLACK
- ② PIN MATERIAL: PHOSPHOR-BRONZE
- ③ 3 LBS/1.36 KG MIN. RETENTION.
- ④ TO DETERMINE DIMENSIONS:  
N = NUMBER OF POSITIONS.  
EXAMPLE: 10 POS., (N-1) x .100[2.54]=.900[22.87]
- ⑤ RETENTIVE LEG:  
RETENTIVE LEG APPLICABLE TO TAIL LENGTH .120/3.05 ONLY.  
RETENTION IS APPLIED TO FOUR PINS ON PART SIZES OF 2x14 AND SMALLER,  
AND APPLIED TO EIGHT PINS ON PARTS SIZES OF 2x15 AND LARGER.  
5LB/2.3KG MAX INSERTION FORCE AND .25LB./1KG MIN RETENTION FORCE  
PER RETENTIVE PIN USING .062/1.57 THICK CIRCUIT BOARD AND RECOMMENDED  
HOLE PATTERN. RETENTIVE LOCATION AT THE DISCRETION OF THE MANUFACTURER.  
OMIT FROM PRODUCT NUMBER IF THIS FEATURE IS NOT APPLICABLE.
- 6. PACKAGED IN TRAYS.
- 7. UNDERPLATING: 50μ"/1.27μm Ni.
- ⑧ FOR POLARIZATION, SPECIFY POSITION NUMBER (i.e.. 03= PIN 3) TO OMIT PIN.  
OMIT FROM PRODUCT NUMBER IF THIS FEATURE IS NOT APPLICABLE.
- ⑨ ADD "LF" SUFFIX AT THE END OF PART NUMBER FOR LEAD FREE OPTION.
- ⑩ THIS PRODUCT MEETS EUROPEAN UNION DIRECTIVES AND OTHER  
COUNTRY REGULATION AS DESCRIBED IN GS-22-008.
- 11. THE HOUSING WILL WITHSTAND EXPOSURE TO 260°C PEAK TEMPERATURE  
FOR 15 SECONDS IN A WAVE SOLDER APPLICATION WITH A 1.5mm  
MINIMUM THICK CIRCUIT BOARD. SEE APPLICATION NOTES/PROCEDURES  
IF THEY ARE AVAILABLE.  
  
THE HOUSING WILL WITHSTAND EXPOSURE TO 260°C PEAK TEMPERATURE  
FOR 20 SECONDS IN A CONVECTION, INFRA-RED OR VAPOR PHASE REFLOW  
OVEN. SEE APPLICATION NOTES/PROCEDURES IF THEY ARE AVAILABLE.
- ⑫ PLATING OPTIONS:  
MAY BE EITHER GOLD OR GXT PLATED AT MANUFACTURER'S OPTION.



mat'l code		surface ISO 802		tolerance ISO 406 ISO 1101	projection	product family QUICKIE	
ltr	ecn no	dr	date	tolerances unless otherwise specified		title	
K				angles	linear	.100/2.54cc EJECT LATCH SHOROUNDED VERTICAL HEADER	
				0°±2'		INCH/MM	scale 1:1
				dr	D. INGRAM	7/12/99	
				engr	L. GREEN	7/21/99	
				chr	L. GREEN	7/21/99	
				appd	L. GREEN	7/21/99	
sheet index	revision sheet						dwg no 53611 sheet 2 of 2 size A3 type Product Customer Drawing

FCJ  
FCConnect.com

Copyright FCJ

## X-ON Electronics

Largest Supplier of Electrical and Electronic Components

*Click to view similar products for [Amphenol](#) manufacturer:*

Other Similar products are found below :

[PT01SE-16-8P\(027\)](#) [PT01SE-16-8P\(476\)](#) [CTV06RW-11-2JB-LC](#) [97-3108A-22-14P](#) [10-474017-10P](#) [MS27473P14B18S](#) [TV06RW-25-90AE](#)  
[CTVS06RF-25-46PB-LC](#) [PT02E10-2PW](#) [PT02E10-2PX](#) [97-3106A18-3PX-958](#) [97-3106A18-3PY-958](#) [PT06J20-24SW](#) [TV06RL-13-35AD](#)  
[TV06RL-13-98BD](#) [TV06RW-25-46AE](#) [TV06RL-13-35SD-LC](#) [TV06RL-13-35SD](#) [TV06RL-13-98SD-LC](#) [TV06RL-13-98SD](#) [TVP00RW-23-](#)  
[53AD](#) [PT02E10-2PW-025](#) [100-007-213-002-001](#) [2M805-002-16NF23-12PA](#) [97-3108B16S-5PW-417](#) [97-3108B16S-5PY-417](#) [CS-](#)  
[DSDMDB37MF-025](#) [97-3108B16S-5PZ-417](#) [GTC02R32-17S-025-RDS](#) [PT06SE2041P](#) [CF-5A9013-04N](#) [CF-6A4615-06N](#) [GTC02R32-17S-](#)  
[025-RDS-LC](#) [GTC02R32-17S-025-LC](#) [PT06SE-24-61P\(LC\)](#) [SP28W1F](#) [TV07DT-25-37P](#) [TV07DT-25-37JN-LC](#) [TV07DT-25-37S](#) [TV07DT-](#)  
[25-37S-LC](#) [TV07DT-25-46P-LC](#) [97-3101A20-21P-958](#) [TV07DT-25-90P-LC](#) [TV07DT-25-46A](#) [TV07DT-25-37P-LC](#) [GTS08-36-22PZ-025-](#)  
[B30](#) [PT00SP2241P](#) [CTVPS00RF-15-15AC](#) [LJT06RT-15-35PB\(023\)](#) [TVS07RF-15-15AB](#)