

PRODUCT NUMBER  
 5 4 2 0 2 - X X X X X - X X X LF

PLATING  
 S=15μ"[0.38μm]  
 ON CONTACT AREA  
 100μ"[2.5μm]TIN  
 ON TAIL(NOTE 13)  
 G=30μ"[0.76μm]  
 ON CONTACT AREA  
 100μ"[2.5μm]TIN  
 ON TAIL(NOTE 13)  
 T=100μ"[2.5μm]TIN  
 ON CONTACT AREA  
 AND ON TAIL(SEE NOTE 11)  
 F=2μ"[0.05μm]GOLD  
 ON CONTACT AREA  
 AND ON TAIL

POLARIZATION  
 NOTE 6

PACKAGING TYPE, NOTE 5

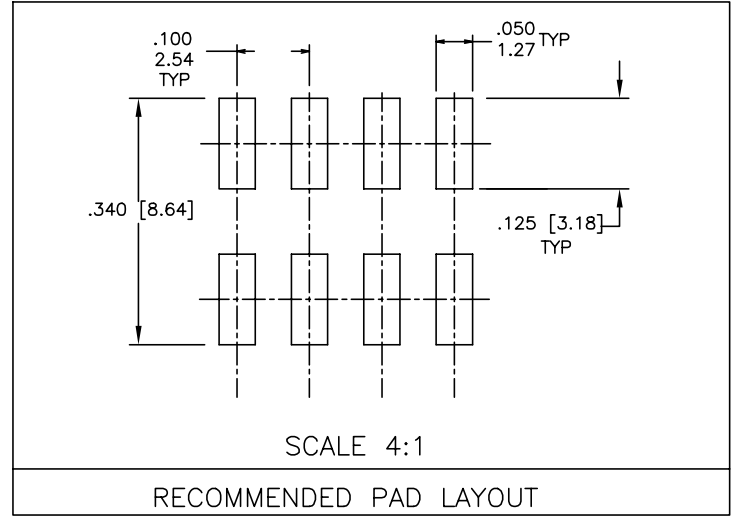
LEAD FREE OPTION NOTE 9 & 10

POSITIONS PER ROW  
 02 TO 20

LEAD STYLE	POST
08	0.230/5.84
30	0.318/8.08

NOTES:

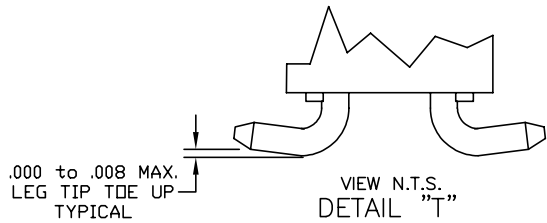
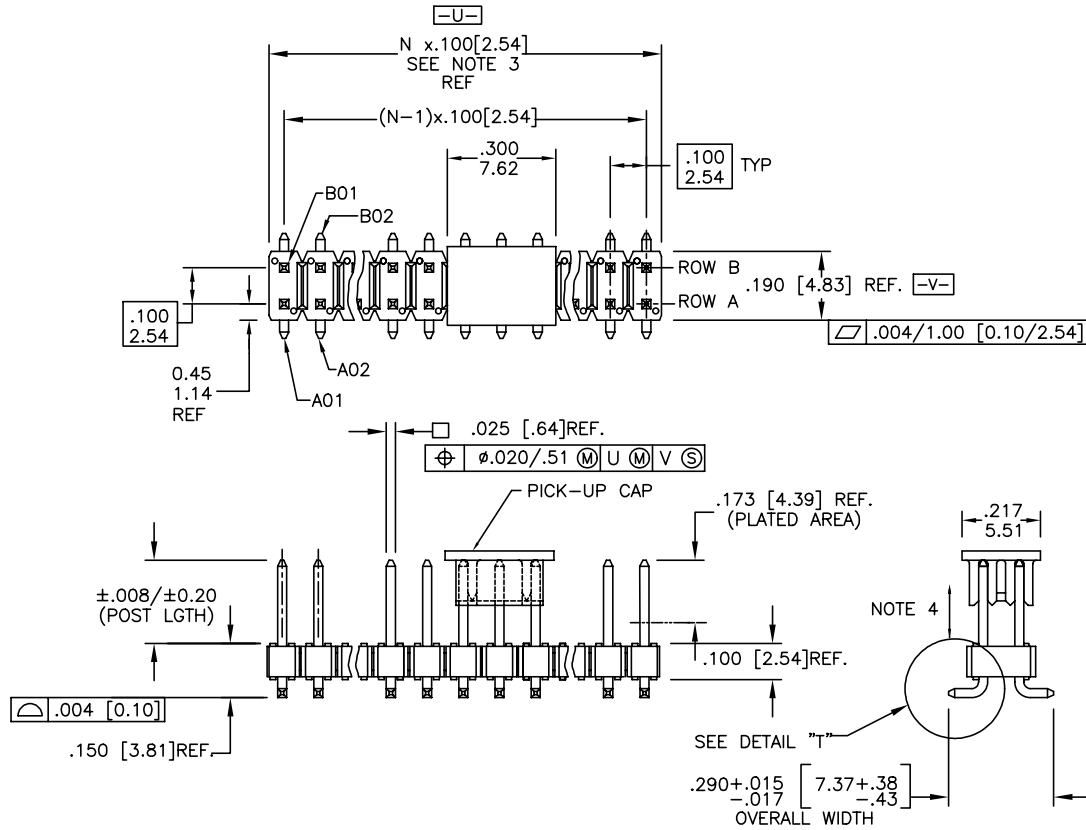
- HOUSING MAT'L: HIGH TEMPERATURE THERMOPLASTIC. FLAME RETARDANT PER UL 94V-0. COLOR: BLACK OR MINERAL FILLED LCP FLAME RETARDENT PER UL-94V-0. COLOR: BLACK.  
 THESE PART NUMBERS WILL WITHSTAND EXPOSURE TO 260 C PEAK TEMPERATURE FOR 20 SECONDS IN WAVE SOLDER, INFRA-RED OR VAPOR PHASE SOLDER PROCESS.
- PIN MATERIAL: PHOSPHOR-BRONZE
- TO DETERMINE DIMENSIONS:  
 N = NUMBER OF POSITIONS ROW.  
 EXAMPLE: 10 POS., N x .100/2.54=1.00/25.4
- 2LBS/0.9KG MIN. PIN RETENTION IN EITHER DIRECTION.
- PACKAGING: \_ =POLY BAGS WITHOUT PICKUP CAP.  
 T =TUBES (OMIT DASH IF NOT POLARIZED).  
 P =TUBES WITH PICKUP CAPS.  
 A =TAPE AND REEL WITH PICKUP CAPS.  
 C =CUSTOMIZED TAPE AND REEL WITH PICKUP CAPS.
- FOR POLARIZATION, SPECIFY POSITION NUMBER (i.e. A03=ROW A POS. 3) TO OMIT PIN. OMIT FROM PRODUCT NUMBER IF THIS FEATURE IS NOT APPLICABLE. PRODUCT MANAGEMENT APPROVAL REQUIRED PRIOR TO RELEASE OR SALE OF POLARIZED PRODUCTS.
- UNDERPLATING: 50μ"/1.2μm Ni.
- PIN TIPS ON Sn PLATED PRODUCT MAY HAVE BARE METAL ON TWO SIDES, BOTH ENDS.
- PART NUMBERS WITH "LF" SUFFIX AT THE END ARE LEAD FREE.
- THESE PRODUCTS MEETS EUROPEAN UNION DIRECTIVES AND OTHER COUNTRY REGULATION AS DESCRIBED IN GS-22-008.
- "THIS PRODUCT HAS 100% PURE TIN PLATING IN THE INTERFACE AND HAS NOT BEEN TESTED FOR WHISKER GROWTH IN ALL INTERCONNECT ENVIRONMENTS."
- THE HOUSING WILL WITHSTAND EXPOSURE TO 260°C PEAK TEMPERATURE FOR 20 SECONDS IN A CONVECTION, INFRA-RED OR VAPOR PHASE REFLOW OVEN. SEE APPLICATION NOTES/PROCEDURES IF THEY ARE AVAILABLE.
- MAY BE EITHER GOLD OR GXT PLATED AT MANUFACTURER'S OPTION



Copyright FCI.

www.fciconnect.com		surface 6.4 ISO 1302	tolerance std ISO 406 ISO 1101	projection A4	INCH/MM ↔
Dr	D.INGRAM	05/17/99	ANGULAR	size	Scale
Eng	H.SUNDY	07/21/99	LINEAR	A4	1.000
Chr	H.SUNDY	07/21/99	0° ±2°	ECN	ELX-N-14748
Appr	H.SUNDY	07/21/99	Product family	BERGSTIK	Spec ref
rev	ecn no	dr	date	dwg no	Rev.
W	ELX-N-012227	J.Z	2012-07-15	54202	X
X	ELX-N-14748	ZK	2013-05-14		
S	M07-0361	MHT	8/14/07		
T	M08-0208	MHT	7/18/08		
U	M08-0279	MHT	9/30/08		
V	N10-0438	ZJ	2010-12-28		
title				100 UNSHROUDED HDR. DUAL ROW VERT. SMT.	customer
catalog no				CUSTOMER	sheet 1 of 3

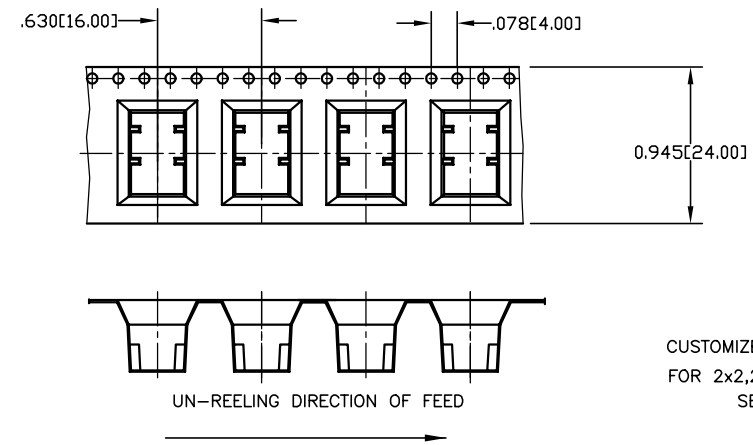
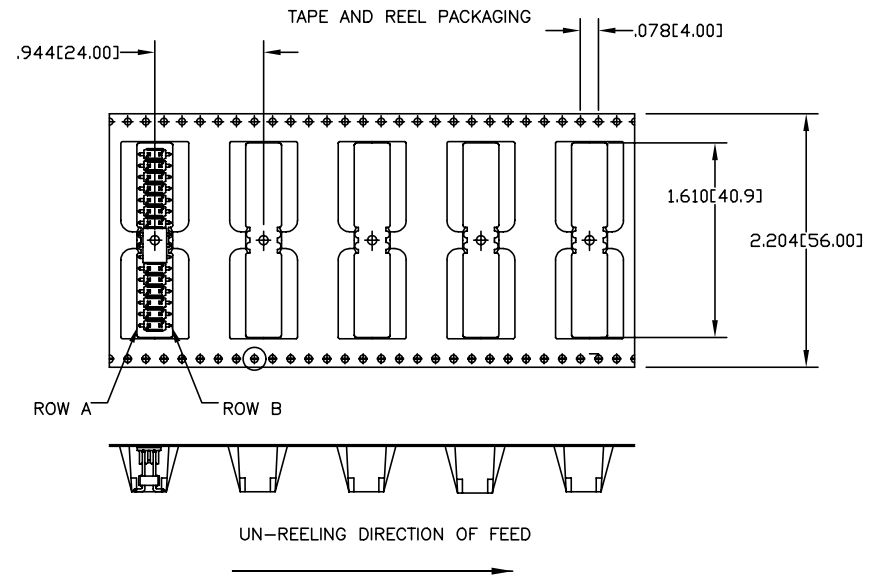
PRODUCT NUMBER  
SEE TABLE



www.fciconnect.com			surface ISO 1302 ✓		tolerance std ISO 406 ISO 1101		projection INCH/MM	
			TOLERANCES UNLESS OTHERWISE SPECIFIED				size A4 Scale 1.000	
Dr	D.INGRAM	05/17/99	ANGULAR	LINEAR	0.X	±0.3	ECN	ELX-N-14748
Eng	H.SUNDY	07/21/99			0.XX	±0.15		
Chr	H.SUNDY	07/21/99	0°	±2°	0.XXX	±0.05	Spec ref	
Appr	H.SUNDY	07/21/99	Product family		BERGSTIK		Spec ref	
FCI			title .100 UNSHROUDED HDR. DUAL ROW VERT. SMT.			dwg no 54202		Rev. X
			catalog no			CUSTOMER		sheet 2 of 3

### TAPE AND REEL PACKAGING

SIZE	LEAD STYLE 08 POST (0.230 [5.84])	LEAD STYLE 30 POST (0.318 [8.08])
2X2	YES	YES
2X3	YES	
2X4	YES	YES
2X5	YES	
2X6	YES	
2X7	YES	YES
2X8	YES	
2X9		
2X10	YES	
2X11	YES	
2X12		YES
2X13	YES	
2X14		
2X15	YES	
2X16		YES
2X17	YES	
2X18		
2X19		
2X20		



CUSTOMIZED CARRIER TAPE  
FOR 2x2,2x3,2x4,2x5 SIZE.  
SEE NOTE 5



Copyright FCI.

#### Cross Reference

CORE RANGE	EXTENDED RANGE
54202-X08XXLF	95278-X01-XXLF
54202-X30XXLF	95278-X02-XXLF

www.fciconnect.com		surface ISO 1302 ✓	tolerance std ISO 406 ISO 1101	projection	INCH/MM
		TOLERANCES UNLESS OTHERWISE SPECIFIED			←→
Dr	D.INGRAM	05/17/99	ANGULAR	0.X ±0.3	size A4
Eng	H.SUNDY	07/21/99	LINEAR	0.XX ±0.15	Scale 1.000
Chr	H.SUNDY	07/21/99	0° ±2°	0.XXX ±0.05	ECN ELX-N-14748
Appr	H.SUNDY	07/21/99	Product family	BERGSTIK	Spec ref
	title	.100 UNSHROUDED HDR. DUAL ROW VERT. SMT.		dwg no	54202
	catalog no			CUSTOMER	sheet 3 of 3

## X-ON Electronics

Largest Supplier of Electrical and Electronic Components

*Click to view similar products for [Headers & Wire Housings](#) category:*

*Click to view products by [Amphenol](#) manufacturer:*

Other Similar products are found below :

[892-18-020-10-001101](#) [58102-G61-06LF](#) [582553-1](#) [0009485154](#) [009176003701906](#) [0050291907](#) [LY20-4P-DT1-P1E-BR](#) [02.125.8002.8](#)  
[609-3404](#) [61062-3](#) [622-0430](#) [622-3653LF](#) [63453-116](#) [636-1030](#) [636-1427](#) [636-3427](#) [636-4007](#) [641938-9](#) [641991-4](#) [644827-2](#) [65817-010LF](#)  
[65817-015LF](#) [65863-015LF](#) [66207-023LF](#) [67095-007LF](#) [67601157](#) [68648-049](#) [70.362.1628.0](#) [70-4210](#) [70-4226B](#) [70-4853B](#) [707-5020](#) [707-](#)  
[5028](#) [71.350.2428.0](#) [71918-208LF](#) [71961-016LF](#) [733-134](#) [733-162](#) [754199-000](#) [760-3052](#) [787-8014-00](#) [79531-3000](#) [FCN-360C032-B](#) [FCN-](#)  
[367T-T012/H](#) [FCN-723D010/2](#) [80.063.4001.1](#) [800-90-001-10-001000](#) [800-90-010-10-002000](#) [801-43-002-10-013000](#) [801-43-006-10-002000](#)