

PRODUCT NUMBER

5 4 2 0 2 - X X X X X - X X X LF

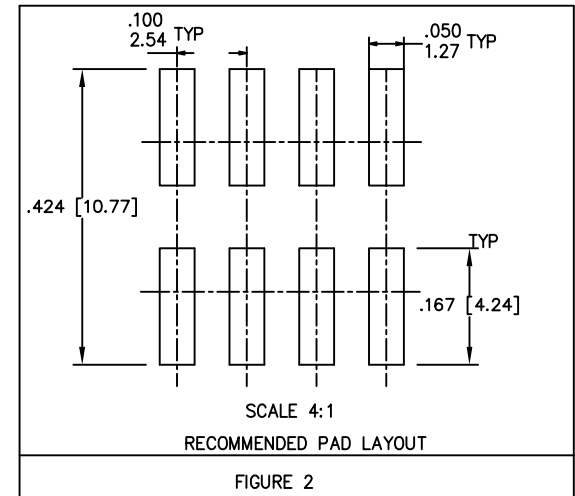
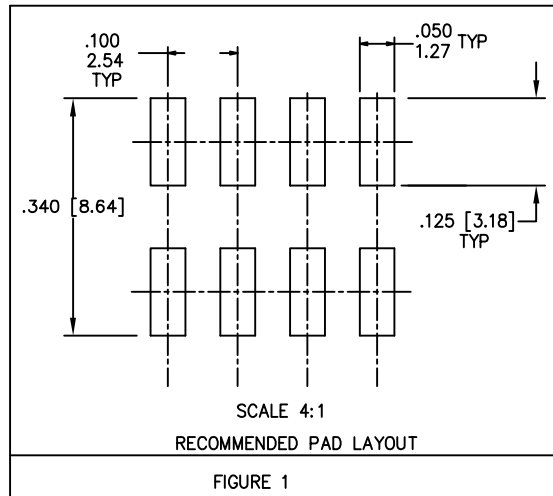
PLATING
 S=15μ" [0.38μm]
 ON CONTACT AREA
 100μ" [2.5μm] TIN
 ON TAIL (NOTE 13)
 G=30μ" [0.76μm]
 ON CONTACT AREA
 100μ" [2.5μm] TIN
 ON TAIL (NOTE 13)
 T=100μ" [2.5μm] TIN
 ON CONTACT AREA
 AND ON TAIL (SEE NOTE 11)
 F=2μ" [0.05μm] GOLD
 ON CONTACT AREA
 AND ON TAIL

LEAD FREE OPTION NOTE 9 & 10
 POLARIZATION NOTE 6
 PACKAGING TYPE, NOTE 5
 POSITIONS PER ROW 02 TO 20

| LEAD STYLE | POST | TAIL OVERALL WIDTH | PCB LAYOUT |
|------------|--------------------------|---|------------|
| 08 30 | 0.230/5.84 0.318/8.08 | .290 ^{+0.015} / _{-0.017} / 7.37 ^{+0.38} / _{-0.43} | FIGURE 1 |
| 60 | 0.575/14.60 | .374 ^{+0.015} / _{-0.017} / 9.50 ^{+0.38} / _{-0.43} | FIGURE 2 |

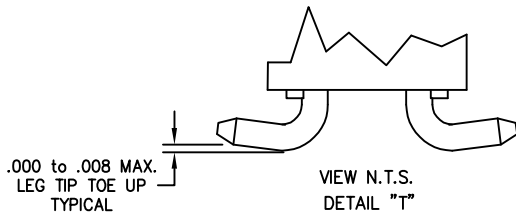
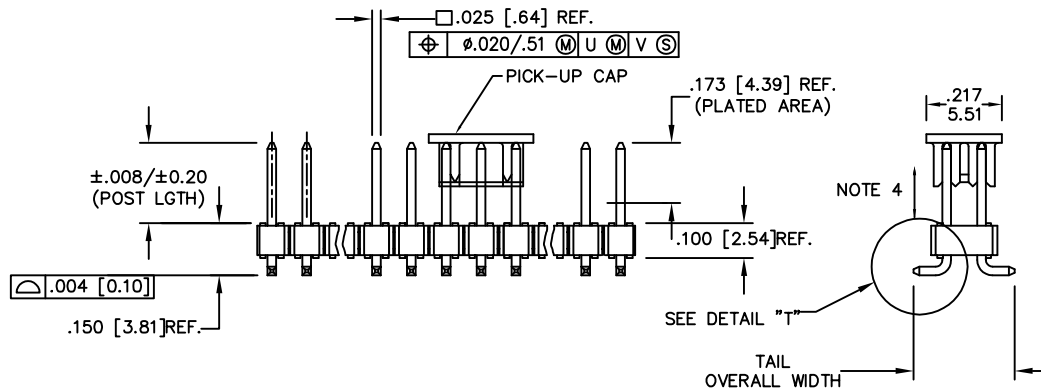
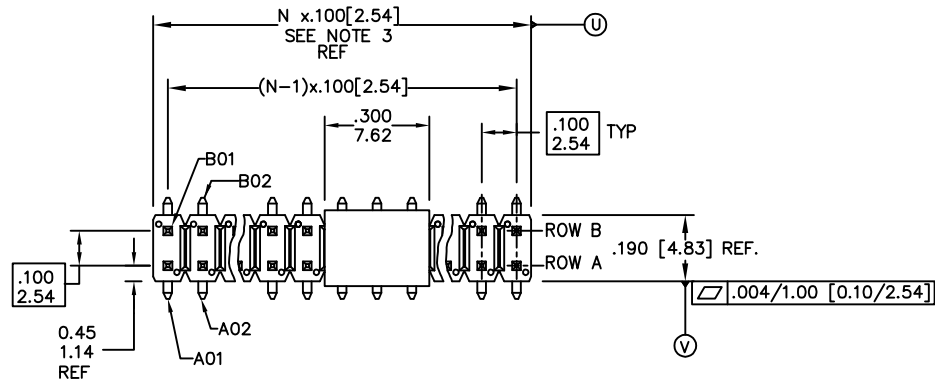
NOTES:

- HOUSING MAT'L: HIGH TEMPERATURE THERMOPLASTIC. FLAME RETARDANT PER UL 94V-0. COLOR: BLACK OR MINERAL FILLED LCP FLAME RETARDANT PER UL-94V-0. COLOR: BLACK. THESE PART NUMBERS WILL WITHSTAND EXPOSURE TO 260 C PEAK TEMPERATURE FOR 20 SECONDS IN WAVE SOLDER, INFRA-RED OR VAPOR PHASE SOLDER PROCESS.
- PIN MATERIAL: PHOSPHOR-BRONZE
- TO DETERMINE DIMENSIONS:
 N = NUMBER OF POSITIONS ROW.
 EXAMPLE: 10 POS., N x .100/2.54=1.00/25.4
- 2LBS/0.9KG MIN. PIN RETENTION IN EITHER DIRECTION.
- PACKAGING: NONE =POLY BAGS WITHOUT PICKUP CAP.
 T =TUBES (OMIT DASH IF NOT POLARIZED).
 P =TUBES WITH PICKUP CAPS.
 A =TAPE AND REEL WITH PICKUP CAPS.
 C =CUSTOMIZED TAPE AND REEL WITH PICKUP CAPS.
 D =TAPE AND REEL WITHOUT PICKUP CAPS.
 S =SPECIAL REQUEST OF TAPE AND REEL WITH PICKUP CAPS.
 M =TAPE AND REEL WITH PICKUP CAPS FOR SPECIAL CUSTOMER.
- FOR POLARIZATION, SPECIFY POSITION NUMBER (i.e. A03=ROW A POS. 3) TO OMIT PIN. OMIT FROM PRODUCT NUMBER IF THIS FEATURE IS NOT APPLICABLE. PRODUCT MANAGEMENT APPROVAL REQUIRED PRIOR TO RELEASE OR SALE OF POLARIZED PRODUCTS.
- UNDERPLATING: 50μ" /1.2μm Ni.
- PIN TIPS ON Sn PLATED PRODUCT MAY HAVE BARE METAL ON TWO SIDES, BOTH ENDS.
- PART NUMBERS WITH "LF" SUFFIX AT THE END ARE LEAD FREE.
- THESE PRODUCTS MEETS EUROPEAN UNION DIRECTIVES AND OTHER COUNTRY REGULATION AS DESCRIBED IN GS-22-008.
- "THIS PRODUCT HAS 100% PURE TIN PLATING IN THE INTERFACE AND HAS NOT BEEN TESTED FOR WHISKER GROWTH IN ALL INTERCONNECT ENVIRONMENTS."
- THE HOUSING WILL WITHSTAND EXPOSURE TO 260°C PEAK TEMPERATURE FOR 20 SECONDS IN A CONVECTION, INFRA-RED OR VAPOR PHASE REFLOW OVEN. SEE APPLICATION NOTES/PROCEDURES IF THEY ARE AVAILABLE.
- MAY BE EITHER GOLD OR GXT PLATED AT MANUFACTURER'S OPTION



| | | | | | | | | | |
|------------------------------|-------------|-----------------------|----|----------------------------------|----|---------------------------------------|----|--|--|
| mat'l. code SEE NOTES 1&2 | | surface ISO 1302 ✓ | | tolerance ISO 406 ISO 1101 | | projection INCH/MM | | product family BERGSTIK | |
| ltr | ecn | no | dr | date | | tolerances unless otherwise specified | | title | |
| W | EXL-N-12227 | JZ | | 2012-07-15 | | .XX±01 / .XX±03 | | .100 UNSHROUDED HDR DUAL ROW VERT. SMT. | |
| X | ELX-N-14748 | ZK | | 2013-05-14 | | .XXX±005 / .XXX±0.13 | | scale 1:1 | |
| Y | ELX-N-19883 | JH | | 2015-01-15 | | .XXX±0.020 / .XXX±0.051 | | sheet 1 of 4 size | |
| AA | ELX-N-21232 | MZ | | 2015-06-25 | | dr D.INGRAM 1999-05-17 | | 54202 A3 | |
| AB | ELX-N-22858 | MZ | | 2015-12-22 | | engr H.SUNDAY 1999-07-21 | | type Product Customer Drawing | |
| | | | | | | chr H.SUNDAY 1999-07-21 | | | |
| | | | | | | appd H.SUNDAY 1999-07-21 | | | |
| sheet index | revision | AB | AB | AB | AB | AB | AB | | |
| | sheet | 1 | 2 | 3 | 4 | | | | |

PRODUCT NUMBER
SEE SHEET 1

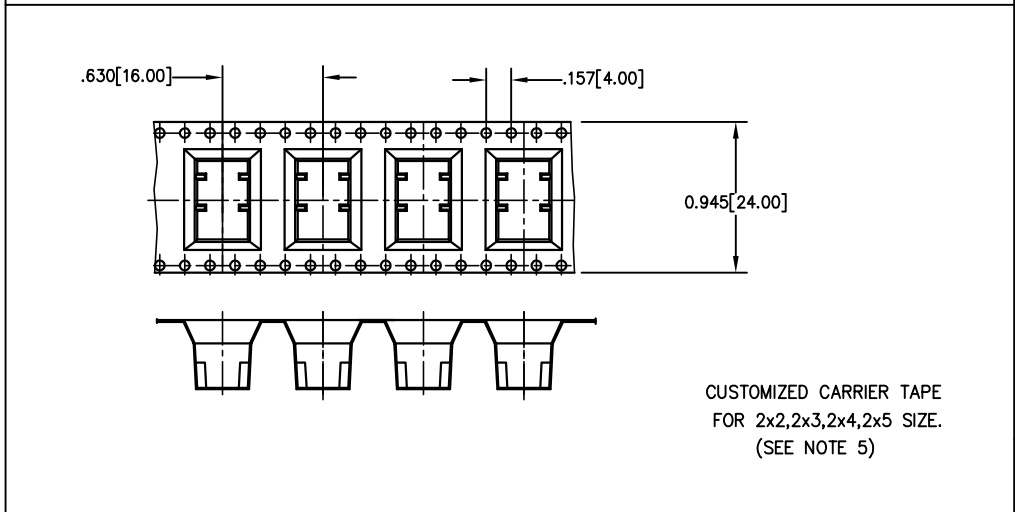
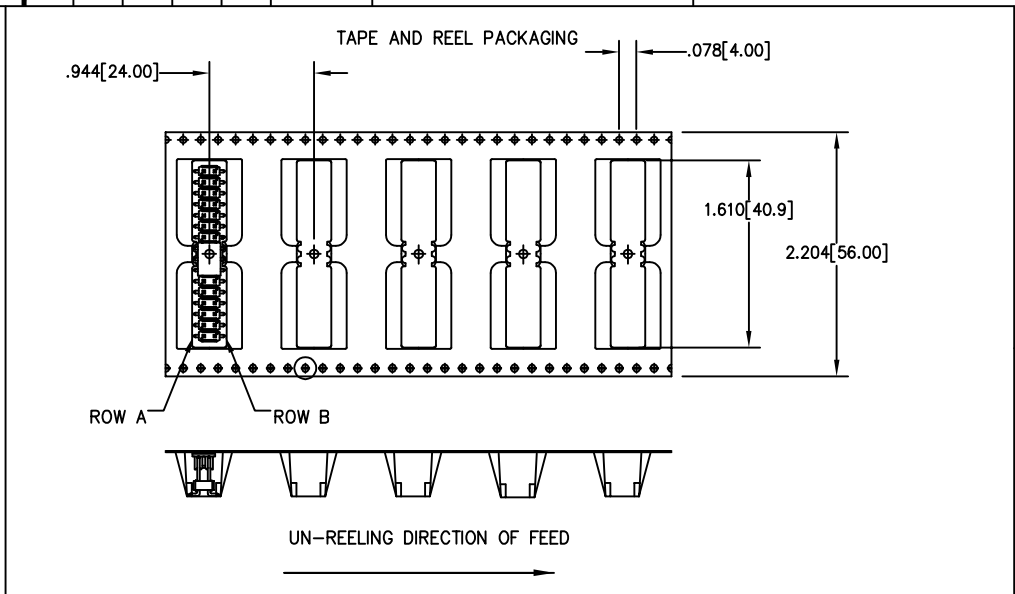


| | | | | | | | | | |
|------------------------------|----------------|---------------------------------------|--|---|--|-----------------------|--|---|--|
| mat'l. code SEE NOTES 1&2 | | surface ISO 1302 ✓ | | tolerance ISO 406 ISO 1101 | | projection INCH/MM | | product family BERGSTIK | |
| ltr ecn no dr date | | tolerances unless otherwise specified | | angles linear | | INCH/MM | | title .100 UNSHROUDED HDR DUAL ROW VERT. SMT. | |
| AB | | 0°±2' | | .XX±.01 / .XX±.03 .XXX±.005 / .XXX±.013 .XXX±.0020 / .XXX±.0051 | | scale 1:1 | | dwg no 54202 | |
| | | dr D.INGRAM 1999-05-17 | | engr H.SUNDAY 1999-07-21 | | FCJ | | sheet 2 of 4 size A3 | |
| | | chr H.SUNDAY 1999-07-21 | | appd H.SUNDAY 1999-07-21 | | | | type Product Customer Drawing | |
| sheet index | revision sheet | | | | | | | | |

| TAPE AND REEL PACKAGING | | |
|-------------------------|--------------------------------------|--------------------------------------|
| SIZE | LEAD STYLE 08 POST (0.230 [5.84]) | LEAD STYLE 30 POST (0.318 [8.08]) |
| 2X2 | YES | YES |
| 2X3 | YES | |
| 2X4 | YES | YES |
| 2X5 | YES | |
| 2X6 | YES | |
| 2X7 | YES | YES |
| 2X8 | YES | |
| 2X9 | YES | |
| 2X10 | YES | |
| 2X11 | YES | |
| 2X12 | YES | YES |
| 2X13 | YES | |
| 2X14 | YES | |
| 2X15 | YES | |
| 2X16 | YES | YES |
| 2X17 | YES | |
| 2X18 | YES | |
| 2X19 | YES | |
| 2X20 | YES | |

Cross Reference

| CORE RANGE | EXTENDED RANGE |
|---------------|----------------|
| 54202-X08XXLF | 95278-X01-XXLF |
| 54202-X30XXLF | 95278-X02-XXLF |



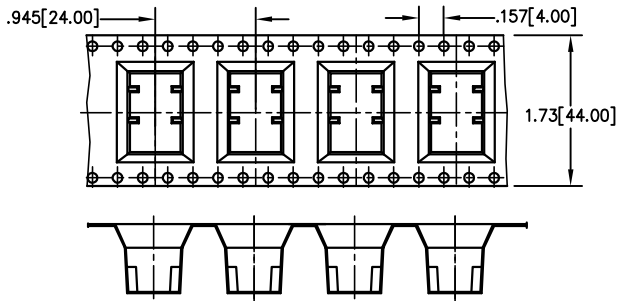
CUSTOMIZED CARRIER TAPE
FOR 2x2,2x3,2x4,2x5 SIZE.
(SEE NOTE 5)

| | | | | | | | | | |
|------------------------------|--|---------------------------------------|--|----------------------------------|--|-----------------------|--|---|--|
| mat'l. code SEE NOTES 1&2 | | surface ISO 1302 ✓ | | tolerance ISO 406 ISO 1101 | | projection INCH/MM | | product family BERGSTIK | |
| ltr ecn no dr date | | tolerances unless otherwise specified | | linear | | INCH/MM | | title .100 UNSHROUDED HDR DUAL ROW VERT. SMT. | |
| AB | | angles | | 0°±2' | | scale 1:1 | | dwg no 54202 | |
| | | dr | | D.INGRAM 1999-05-17 | | sheet 3 of 4 | | size A3 | |
| | | enr | | H.SUNDAY 1999-07-21 | | FCI | | type Product Customer Drawing | |
| | | chr | | H.SUNDAY 1999-07-21 | | | | | |
| | | appd | | H.SUNDAY 1999-07-21 | | | | | |
| sheet index | | revision sheet | | | | | | | |



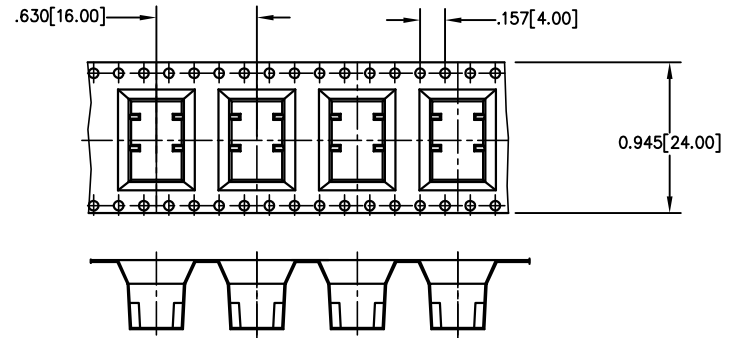
FCIconnect.com

Copyright FCI



UN-REELING DIRECTION OF FEED

54202-****SLF
SPECIAL REQUEST CARRIER TAPE
FOR 2x5 SIZE(SEE NOTES 5)



UN-REELING DIRECTION OF FEED

54202-****MLF
TAPE AND REEL WITH PICK UP
CAP FOR SPECIAL CUSTOMER
FOR 2x5 SIZE(SEE NOTES 5)

| | | | | | | | | | |
|------------------------------|-----|-----------------------|----|----------------------------------|--|---------------------------------------|----------|--|--------------|
| mat'l. code SEE NOTES 1&2 | | surface ISO 1302 ✓ | | tolerance ISO 406 ISO 1101 | | projection | | product family BERGSTIK | |
| ltr | ecn | no | dr | date | | tolerances unless otherwise specified | | title | |
| AB | | | | | | angles | linear | INCH/MM | |
| | | | | | | 0°±2' | | .100 UNSHROUDED HDR DUAL ROW VERT. SMT. | |
| | | | | | | dr | D.INGRAM | 1999-05-17 | scale 1:1 |
| | | | | | | enr | H.SUNDAY | 1999-07-21 | dwg no |
| | | | | | | chr | H.SUNDAY | 1999-07-21 | sheet 4 of 4 |
| | | | | | | appd | H.SUNDAY | 1999-07-21 | size A3 |
| sheet index | | revision sheet | | | | | | type Product Customer Drawing | |

form: A3

X-ON Electronics

Largest Supplier of Electrical and Electronic Components

Click to view similar products for [Headers & Wire Housings](#) category:

Click to view products by [Amphenol](#) manufacturer:

Other Similar products are found below :

[892-18-020-10-001101](#) [58102-G61-06LF](#) [582553-1](#) [0009485154](#) [009176003701906](#) [0050291907](#) [LY20-4P-DT1-P1E-BR](#) [02.125.8002.8](#)
[609-3404](#) [61062-3](#) [622-0430](#) [622-3653LF](#) [63453-116](#) [636-1030](#) [636-1427](#) [636-3427](#) [636-4007](#) [641938-9](#) [641991-4](#) [644827-2](#) [65817-010LF](#)
[65817-015LF](#) [65863-015LF](#) [66207-023LF](#) [67095-007LF](#) [67601157](#) [68648-049](#) [70.362.1628.0](#) [70-4210](#) [70-4226B](#) [70-4853B](#) [707-5020](#) [707-5028](#) [71.350.2428.0](#) [71918-208LF](#) [71961-016LF](#) [733-134](#) [733-162](#) [754199-000](#) [760-3052](#) [787-8014-00](#) [79531-3000](#) [FCN-360C032-B](#) [FCN-367T-T012/H](#) [FCN-723D010/2](#) [80.063.4001.1](#) [800-90-001-10-001000](#) [800-90-010-10-002000](#) [801-43-002-10-013000](#) [801-43-006-10-002000](#)