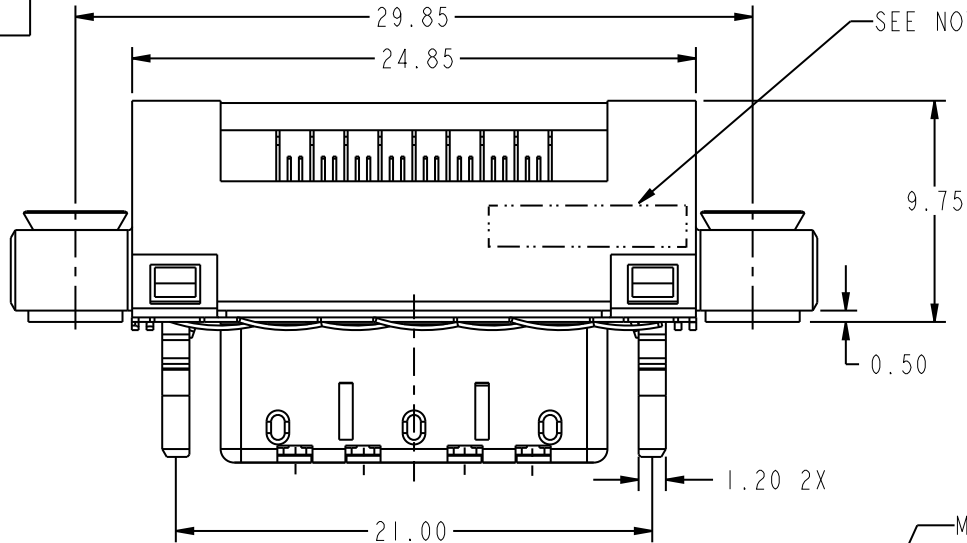
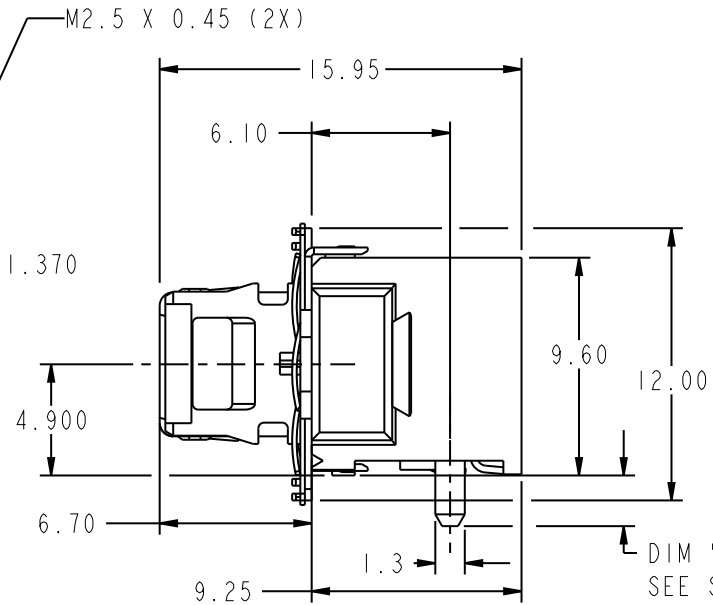
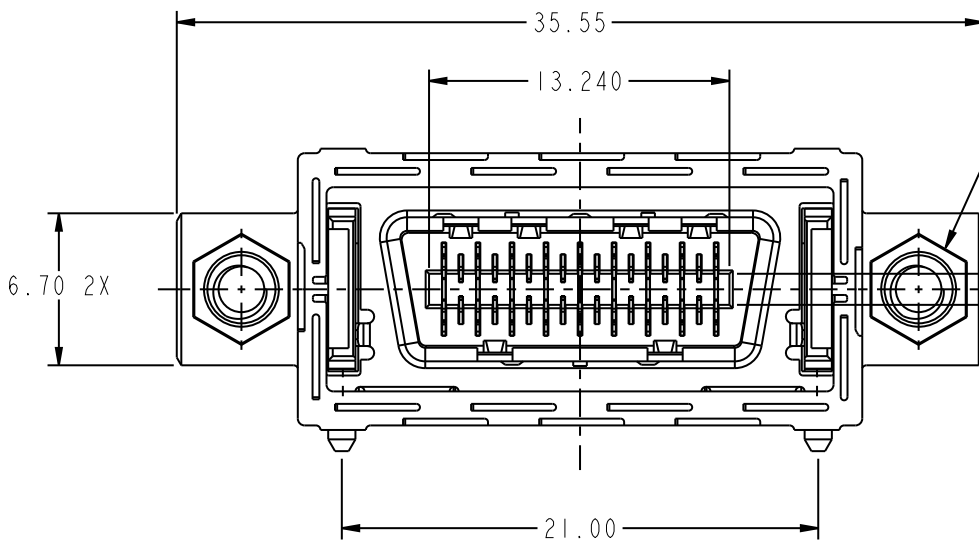
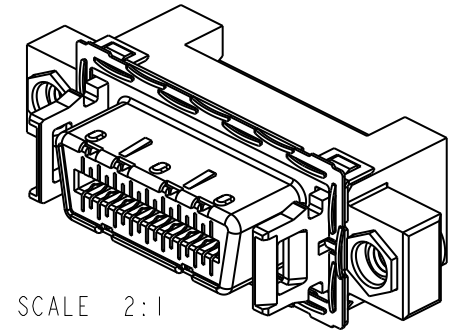


PRODUCT NUMBER
58369-11XXXX



SEE NOTE 3 & 10



www.fciconnect.com			surface 3.2 ASME Y14.5	tolerance std ASME Y14.5	projection MM																											
			TOLERANCES UNLESS OTHERWISE SPECIFIED		⊕																											
Dr	R. DRAGGOO	2002-01-07	ANGULAR	0.X ±.30	size A4																											
Eng	S. OLSON	2001-09-11	LINEAR	0.XX ±.10	Scale 3:1																											
Chr	HIRAN V N	2006-02-26	0° ±2°	0.XXX ±.050	ECN 109-0115																											
Appr	HIRAN V N	2006-02-26	Product family EyeMax (tm)		Spec ref -																											
<table border="1"> <thead> <tr> <th>rev</th> <th>ecn no</th> <th>dr</th> <th>date</th> </tr> </thead> <tbody> <tr> <td>L</td> <td>109-0115</td> <td>RPK</td> <td>2009-06-25</td> </tr> <tr> <td>F</td> <td>V03-0087</td> <td>GIP</td> <td>2003-03-14</td> </tr> <tr> <td>G</td> <td>V03-0430</td> <td>DAI</td> <td>2004-06-07</td> </tr> <tr> <td>H</td> <td>V05-0063</td> <td>TAB</td> <td>2005-02-14</td> </tr> <tr> <td>J</td> <td>106-0123</td> <td>HVN</td> <td>2006-07-26</td> </tr> <tr> <td>K</td> <td>107-0024</td> <td>HVN</td> <td>2006-02-26</td> </tr> </tbody> </table>			rev	ecn no	dr	date	L	109-0115	RPK	2009-06-25	F	V03-0087	GIP	2003-03-14	G	V03-0430	DAI	2004-06-07	H	V05-0063	TAB	2005-02-14	J	106-0123	HVN	2006-07-26	K	107-0024	HVN	2006-02-26		
rev	ecn no	dr	date																													
L	109-0115	RPK	2009-06-25																													
F	V03-0087	GIP	2003-03-14																													
G	V03-0430	DAI	2004-06-07																													
H	V05-0063	TAB	2005-02-14																													
J	106-0123	HVN	2006-07-26																													
K	107-0024	HVN	2006-02-26																													
<table border="1"> <thead> <tr> <th>title</th> <th>dwg no</th> <th>Rev.</th> </tr> </thead> <tbody> <tr> <td>4X R/A RECPT. ASSEMBLY w/MOUNTING TABS</td> <td>58369</td> <td>L</td> </tr> </tbody> </table>			title	dwg no	Rev.	4X R/A RECPT. ASSEMBLY w/MOUNTING TABS	58369	L	<table border="1"> <thead> <tr> <th>catalog no</th> <th>CUSTOMER</th> <th>sheet 1 of 9</th> </tr> </thead> <tbody> <tr> <td>-</td> <td>-</td> <td>-</td> </tr> </tbody> </table>		catalog no	CUSTOMER	sheet 1 of 9	-	-	-																
title	dwg no	Rev.																														
4X R/A RECPT. ASSEMBLY w/MOUNTING TABS	58369	L																														
catalog no	CUSTOMER	sheet 1 of 9																														
-	-	-																														



Copyright FCI.

1

2

3

4

A

B

C

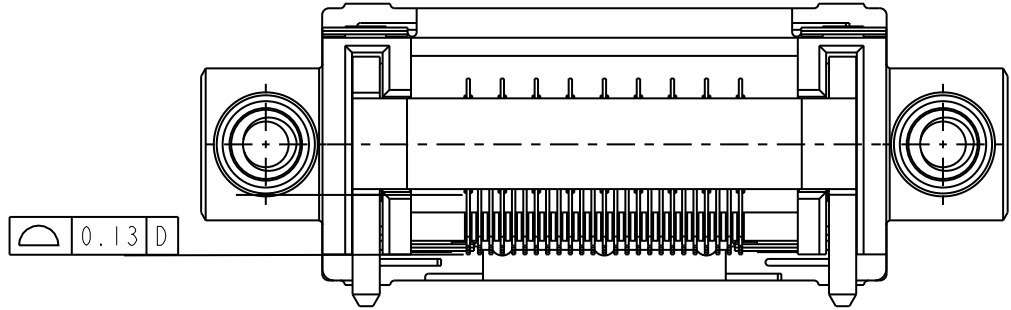
D

A

B

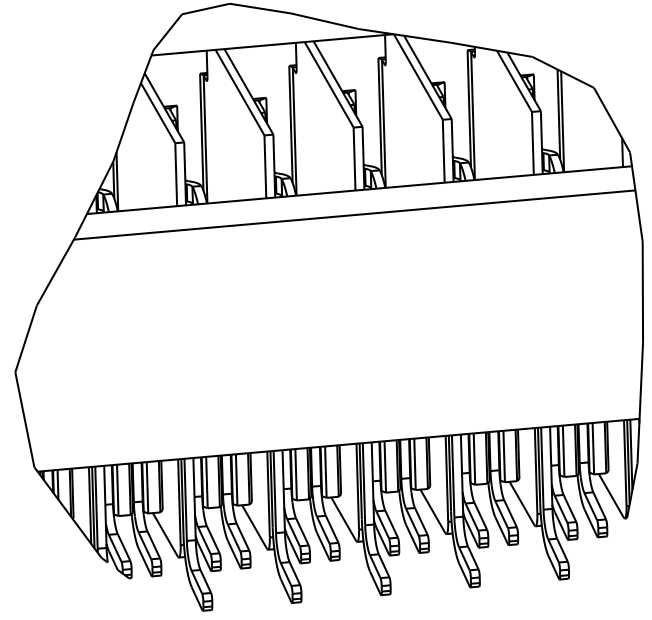
C

D



COPLANARITY MEASUREMENT TO BE TAKEN
AT BOTTOM MOST POINT OF CONTACT TAILS

COPLANARITY ZONE IS BELOW DATUM D



SCALE 8:1



Copyright FCI.

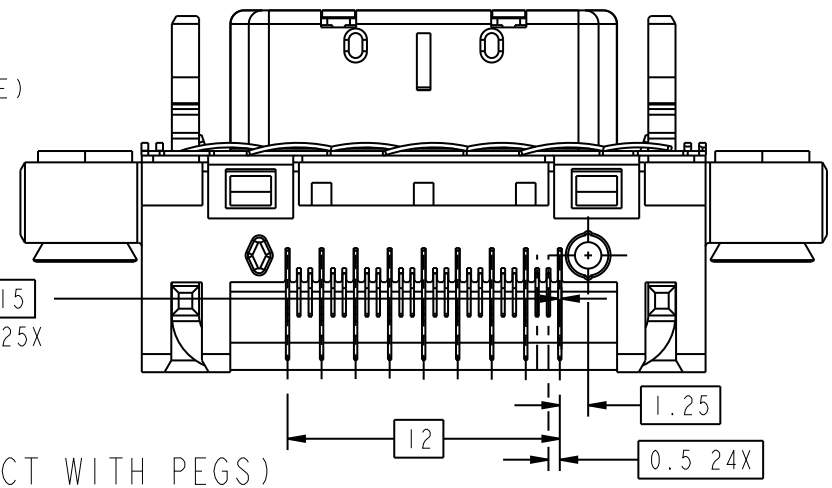
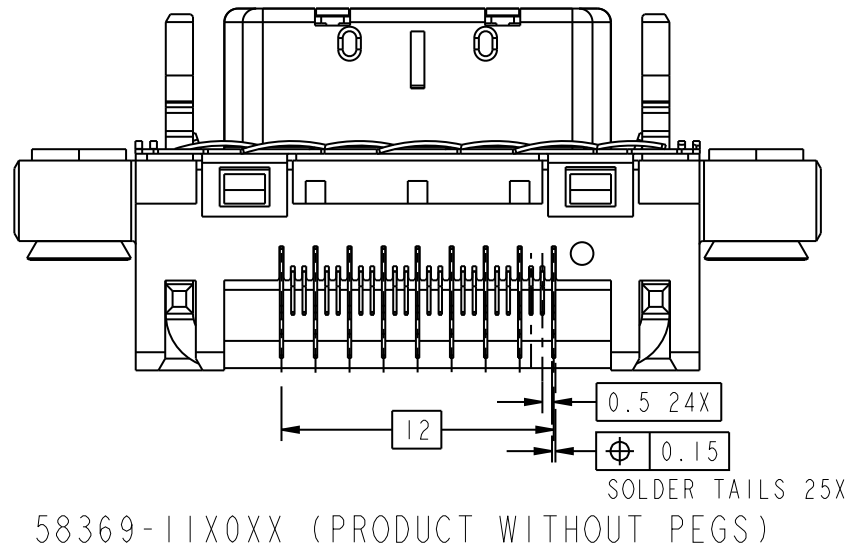
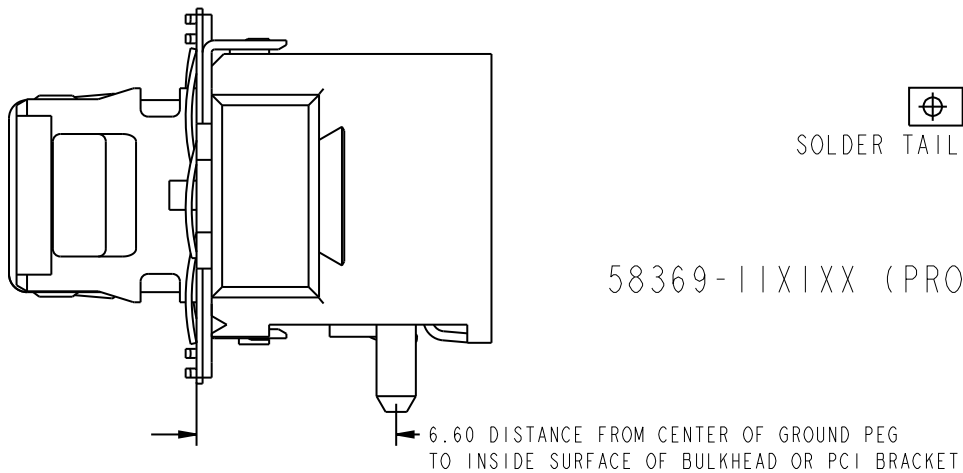
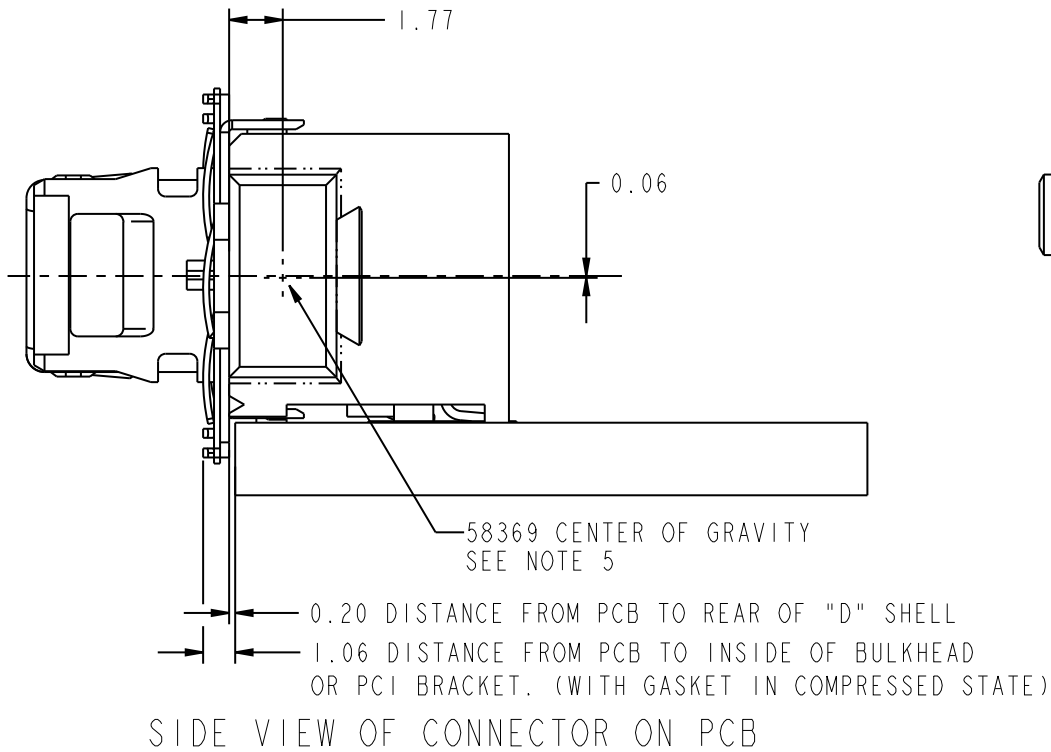
REV F - 2006-04-17

www.fciconnect.com			surface 3.2 ASME Y14.5	tolerance std ASME Y14.5	projection MM			
			TOLERANCES UNLESS OTHERWISE SPECIFIED					
Dr	R. DRAGGOO	2002-01-07	ANGULAR	LINEAR	0.X	±.30	size A4	Scale 3:1
Eng	S. OLSON	2001-09-11			0.XX	±.10		
Chr	HIRAN V N	2006-02-26	0°	±2°	0.XXX	±.050	ECN	109-0115
Appr	HIRAN V N	2006-02-26	Product family EyeMax (tm)			Spec ref -		
			title 4X R/A RECPT. ASSEMBLY w/MOUNTING TABS			dwg no 58369		Rev. L
			catalog no -			CUSTOMER		sheet 2 of 9

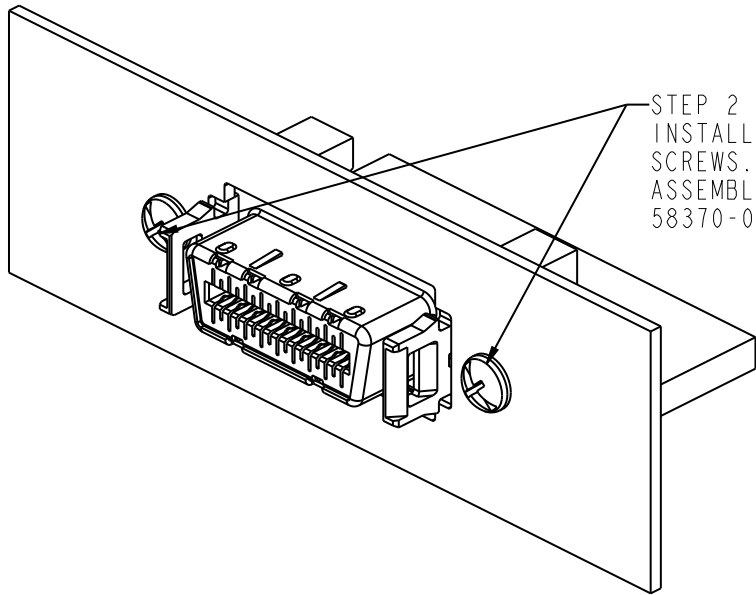
3 PDM: Rev:L

STATUS Released

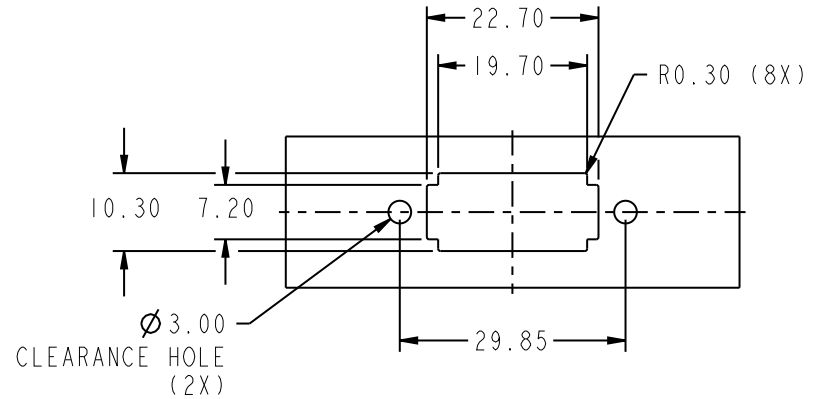
4 Printed: Apr 21, 2010



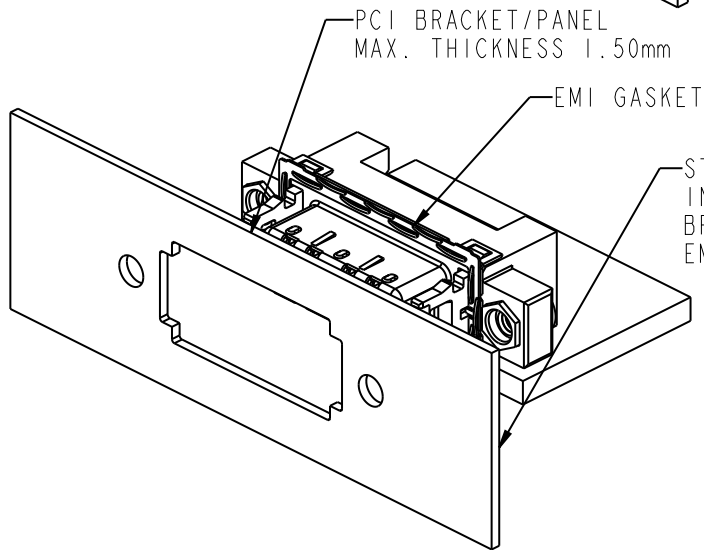
www.fciconnect.com			surface 3.2 ASME Y14.5	tolerance std ASME Y14.5	projection MM			
			TOLERANCES UNLESS OTHERWISE SPECIFIED					
Dr	R. DRAGGOO	2002-01-07	ANGULAR	LINEAR	0.X	±.30	size A4	Scale 4:1
Eng	S. OLSON	2001-09-11			0.XX	±.10		
Chr	HIRAN V N	2006-02-26	0°	±2°	0.XXX	±.050	ECN	109-0115
Appr	HIRAN V N	2006-02-26	Product family EyeMax (tm)		Spec ref			
			title 4X R/A RECPT. ASSEMBLY w/MOUNTING TABS			dwg no 58369		Rev. L
			catalog no		CUSTOMER		sheet 3 of 9	



STEP 2
INSTALL TWO M2.5 PANEL MOUNTING
SCREWS. (NOT SUPPLIED WITH CONNECTOR
ASSEMBLY) SEE PRINT 58370 FOR P/N
58370-001



SCALE 1:1
PANEL CUTOUT



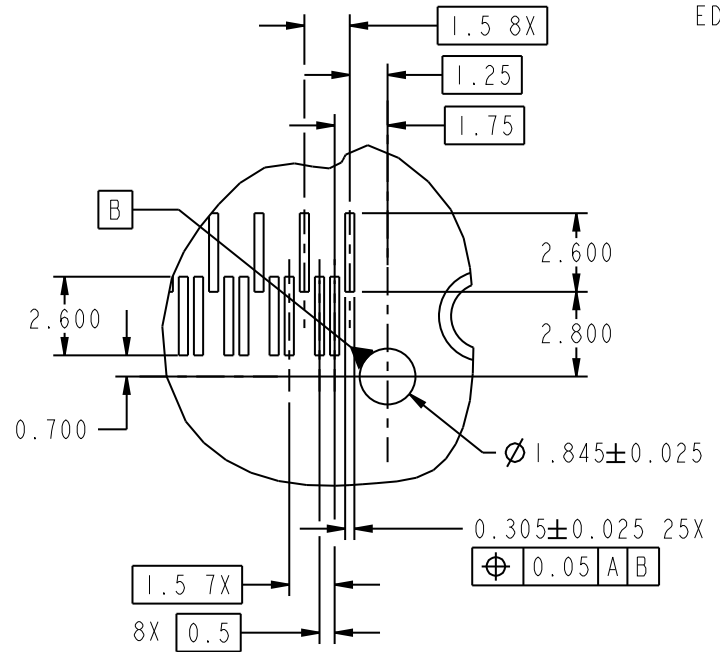
STEP 1
INSERT CONNECTOR INTO PCI
BRACKET/PANEL COMPRESSING
EMI GASKET

CONNECTOR APPLICATION TO PCI BRACKET/PANEL

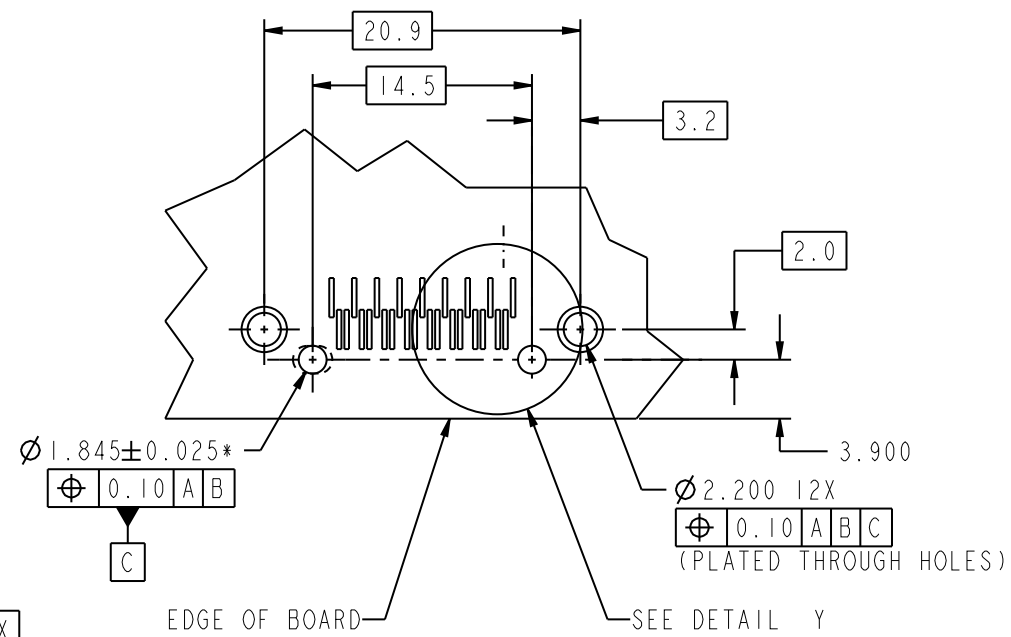
www.fciconnect.com			surface 3.2 ASME Y14.5		tolerance std ASME Y14.5		projection MM	
			TOLERANCES UNLESS OTHERWISE SPECIFIED				A4	
Dr	R. DRAGGOO	2002-01-07	ANGULAR	LINEAR	0.X	±.30	size	Scale 3:2
Eng	S. OLSON	2001-09-11			0.XX	±.10		
Chr	HIRAN V N	2006-02-26	0°	±2°	0.XXX	±.050	ECN	109-0115
Appr	HIRAN V N	2006-02-26	Product family EyeMax (tm)			Spec ref		
FCI			title 4X R/A RECPT. ASSEMBLY w/MOUNTING TABS			dwg no 58369		Rev. L
			catalog no			CUSTOMER		sheet 4 of 9



Copyright FCI.



DETAIL Y
SCALE 4:1



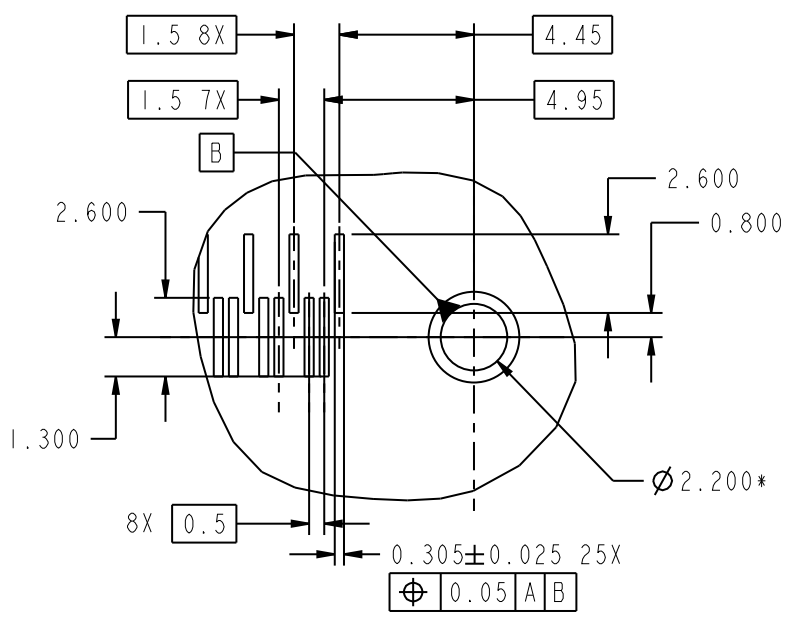
DATUM [A] IS SURFACE OF PCB

THIS PCB LAYOUT IS RECOMMENDED FOR RECEPTACLE ASSEMBLIES THAT HAVE CRUSH/DIAMOND PEGS (58369-11X1XX)
 SEE NEXT PAGE FOR RECOMMENDED LAYOUT FOR RECEPTACLE ASSEMBLIES WITHOUT CRUSH/DIAMOND PEGS
 *RECEPTACLE CAN ALSO BE PLACED WITH 1.82±0.05/+0.0 BY 2.6±0.05 SLOT AT THIS LOCATION}

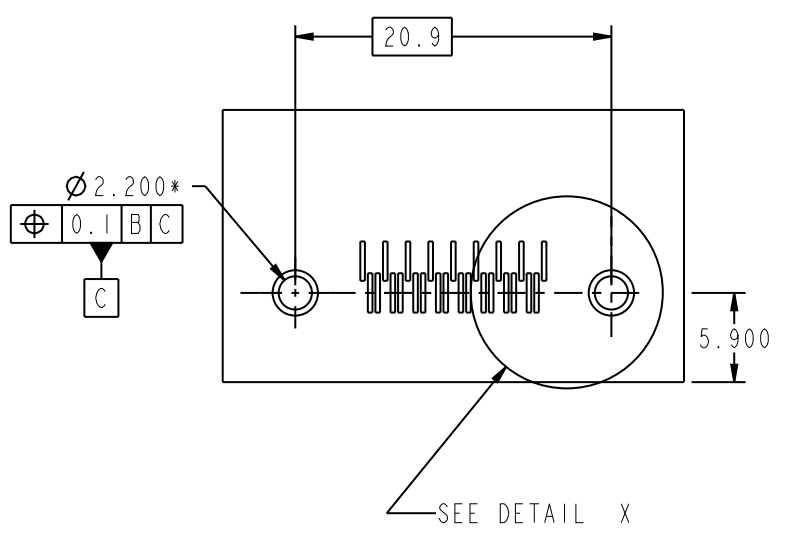
www.fciconnect.com			surface 3.2 ASME Y14.5 ✓	tolerance std ASME Y14.5 -	projection ⊕	MM ↔
TOLERANCES UNLESS OTHERWISE SPECIFIED			ANGULAR	LINEAR	size A4	Scale 13:10
Dr	R. DRAGGOO	2002-01-07	0.X	±.30	ECN	109-0115
Eng	S. OLSON	2001-09-11	0.XX	±.10	Spec ref	-
Chr	HIRAN V N	2006-02-26	0°	±2°	Product family	EyeMax (tm)
Appr	HIRAN V N	2006-02-26	Product family		EyeMax (tm)	Spec ref
			title 4X R/A RECPT. ASSEMBLY w/MOUNTING TABS		dwg no 58369	Rev. L
catalog no			-		CUSTOMER	sheet 5 of 9



Copyright FCI.



DETAIL X
SCALE 4:1



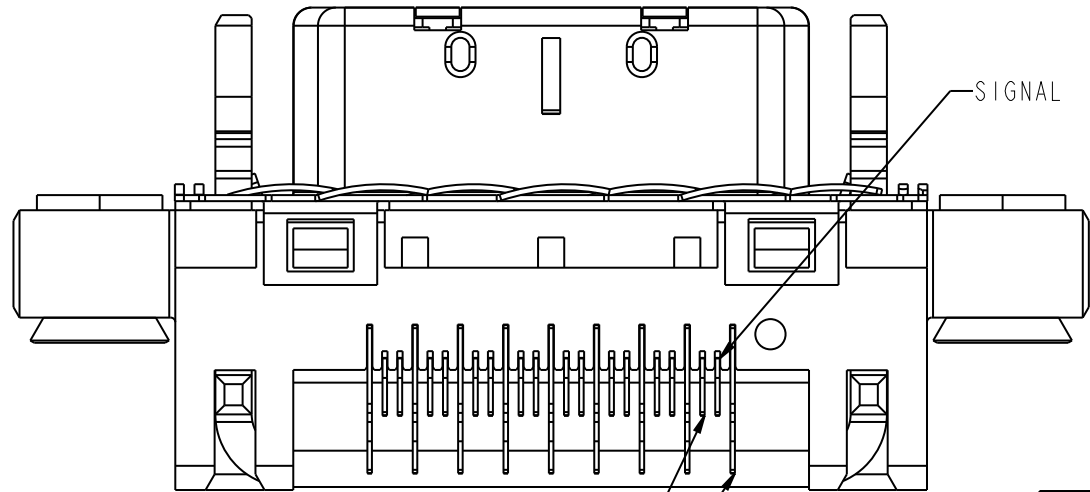
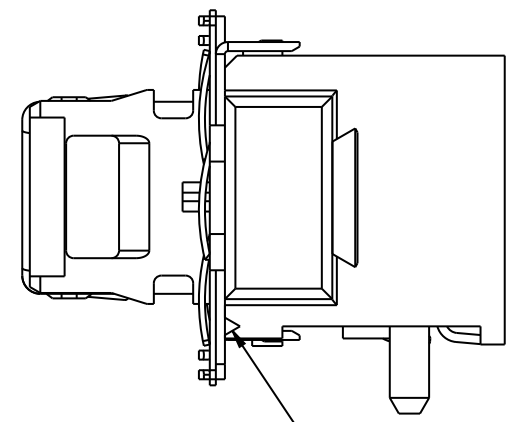
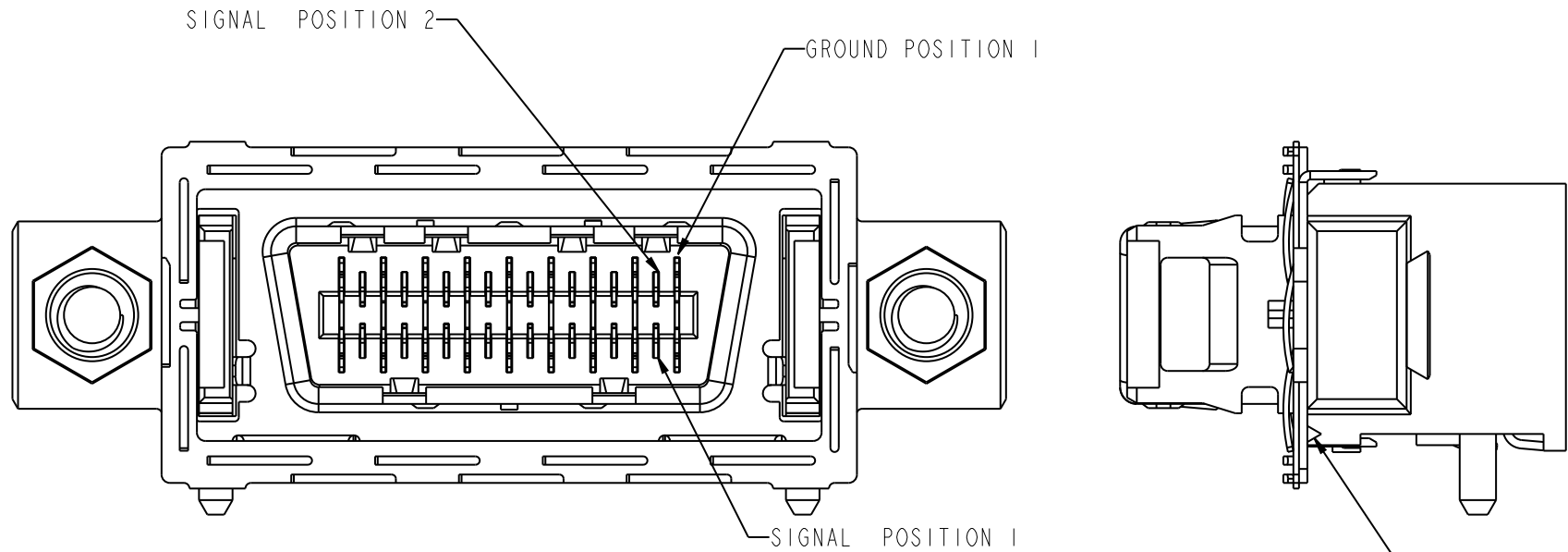
DATUM A IS SURFACE OF PCB

THIS PCB LAYOUT IS RECOMMENDED FOR RECEPTACLE ASSEMBLIES THAT DO NOT HAVE CRUSH/DIAMOND PEGS (58369-11X0XX)
 SEE PREVIOUS PAGE FOR RECOMMENDED LAYOUT FOR RECEPTACLE ASSEMBLIES WITH CRUSH/DIAMOND PEGS
 *PLATED THROUGH HOLES

www.fciconnect.com			surface 3.2 ASME Y14.5	tolerance std ASME Y14.5	projection ASME Y14.5	MM
			TOLERANCES UNLESS OTHERWISE SPECIFIED		← →	
Dr	R. DRAGGOO	2002-01-07	ANGULAR	0.X	±.30	size A4
Eng	S. OLSON	2001-09-11		LINEAR	0.XX	
Chr	HIRAN V N	2006-02-26	0°	±2°	0.XXX	±.050
Appr	HIRAN V N	2006-02-26	Product family EyeMax (tm)		Spec ref -	
FCI			title 4X R/A RECPT. ASSEMBLY w/MOUNTING TABS		dwg no 58369	Rev. L
			catalog no -	CUSTOMER		sheet 6 of 9



Copyright FCI.



www.fciconnect.com			surface 3.2 ASME Y14.5	tolerance std ASME Y14.5	projection ASME Y14.5	MM						
			TOLERANCES UNLESS OTHERWISE SPECIFIED									
Dr	R. DRAGGOO	2002-01-07	ANGULAR	LINEAR	0.X	±.30	size	A4	Scale	4:1		
Eng	S. OLSON	2001-09-11			0.XX	±.10	ECN	109-0115				
Chr	HIRAN V N	2006-02-26			0°	±2°	0.XXX	±.050	Product family	EyeMax (tm)	Spec ref	-
Appr	HIRAN V N	2006-02-26	Product family			EyeMax (tm)	Spec ref					
			title			4X R/A RECPT. ASSEMBLY		dwg no		58369	Rev.	L
			w/MOUNTING TABS			catalog no		CUSTOMER		sheet 7 of 9		

REV F - 2006-04-17

1

2

3

4

KEYING POSITIONS

PART NUMBER	POSITION 1	POSITION 2	POSITION 3	POSITION 4	POSITION 5	POSITION 6
58369-11XXX2		X				X

A

B

C

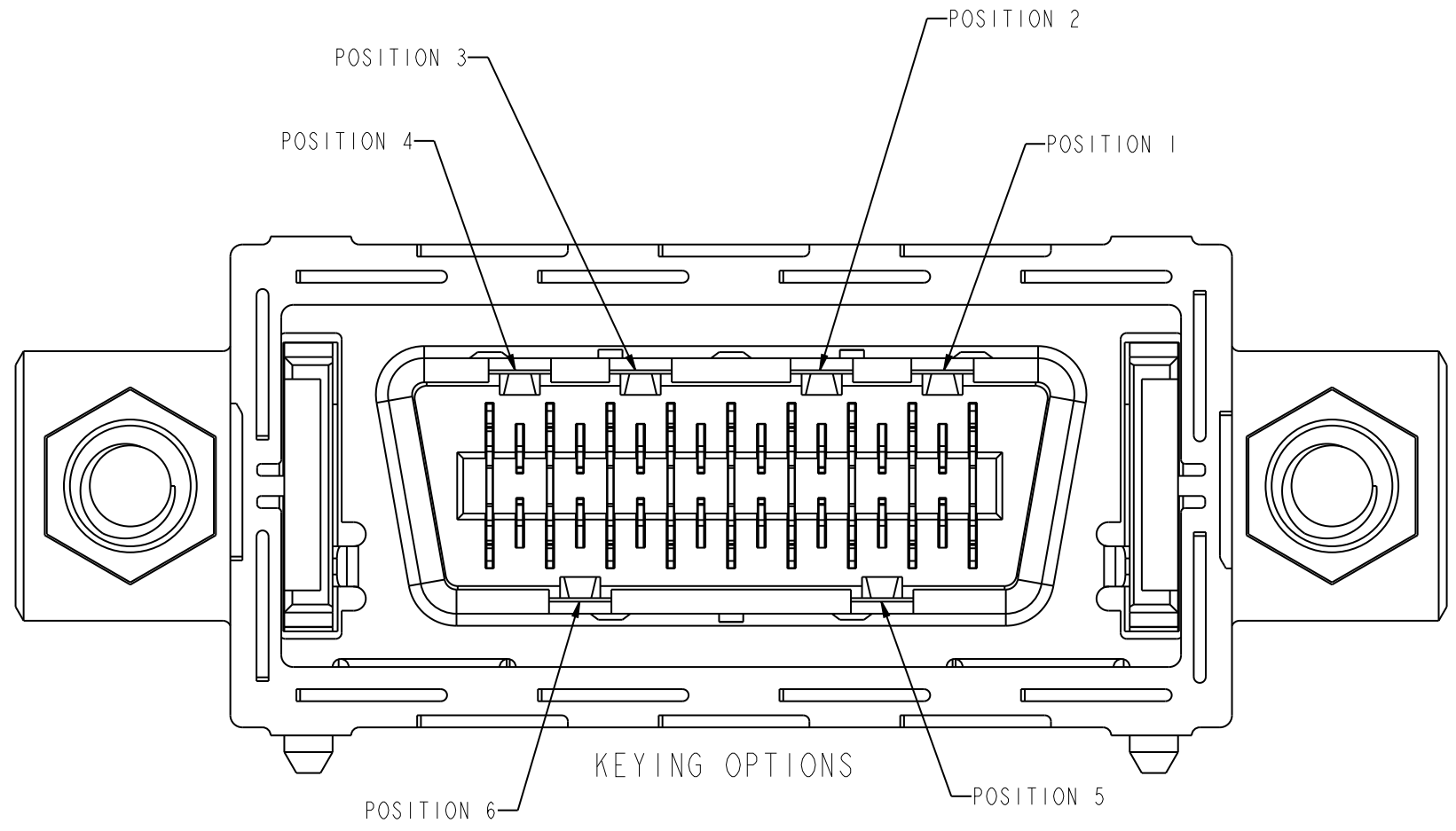
D

A

B

C

D



KEYING OPTIONS



Copyright FCI.

www.fciconnect.com		surface 3.2 ASME Y14.5	tolerance std ASME Y14.5	projection ASME Y14.5	MM
		TOLERANCES UNLESS OTHERWISE SPECIFIED			
Dr	R. DRAGGOO	2002-01-07	ANGULAR	0.X	±.30
Eng	S. OLSON	2001-09-11	LINEAR	0.XX	±.10
Chr	HIRAN V N	2006-02-26	0° ±2°	0.XXX	±.050
Appr	HIRAN V N	2006-02-26	Product family EyeMax (tm)		Spec ref -
		title 4X R/A RECPT. ASSEMBLY w/MOUNTING TABS		dwg no 58369	Rev. L
catalog no		-		CUSTOMER	sheet 8 of 9

REV F - 2006-04-17

2

3 PDM: Rev:L

STATUS Released

4 Printed: Apr 21, 2010

58369-|XXXXYY

- SOLDERTAIL PLATING
BLANK-TIN/LEAD
LF-LEAD FREE (SEE NOTE 2)
- KEYING OPTIONS, SEE SHEET 8
0-NONE
2-CUSTOM
- PACKAGING
1-TAPE & REEL
2-TRAY
- PEGS
0-NO PEGS
1-CRUSH/DIAMOND PEG
- PCB THICKNESS
1-1.6mm
2-2.4mm
3-4.0mm
- EMI GASKET
1-WITH GASKET
- INTERFACE PLATING
1-Au over Ni

PRODUCT NUMBER	BOARD THICKNESS	DIM A
58369-111XXX	1.6mm	2.3
58369-112XXX	2.4mm	3.1
58369-113XXX	4.0mm	4.7

NOTES:)

- ① HOUSING MATERIAL: UL94 V-0 LCP RESIN.
SIGNAL PIN MATERIAL: COPPER ALLOY.
GROUND CONTACT MATERIAL: COPPER ALLOY.
- ② PLATING: LEAD FREE SOLDER TAILS 2 μ m (80 μ in) MIN MATTE TIN
OVER 1.27 μ m (50 μ in) MIN NICKEL UNDERPLATE.
- ③ P/N AND DATE CODE TO APPEAR ON THIS SURFACE.
4. PRODUCT SPECIFICATION GS-12-209.
5. CONNECTOR WEIGHT= 7.06 grams
6. APPLICATION SPECIFICATION: GS-20-025
7. PACKAGING SPECIFICATION GS-14-794. PACKAGING OF LEAD FREE PRODUCTS MEETS LABELING AND PACKAGING SPECIFICATION GS-14-920.
8. ALL DIMENSIONS ON PCB'S ARE BASIC UNLESS OTHERWISE SPECIFIED
9. ALL HOLE DIAMETERS ON PCB'S ARE FINISHED HOLE SIZE
- ⑩ AREA ON TOP OF CONNECTOR IS FLAT & SMOOTH AND CAN BE USED FOR VACUUM PICK & PLACE.
11. MATES WITH EYEMAX[®] PLUG 58443 (WITHOUT PCB), 58638 (WITH UNEQUALIZED PCB) OR 10026692 (WITH EQUALIZED PCB).
12. RECOMMENDED SCREW TORQUE IS 0.15Nm(1.33 in-lbs).
13. LEAD FREE PRODUCTS MEET EUROPEAN UNION DIRECTIVES AND OTHER COUNTRY REGULATIONS AS DESCRIBED IN GS-22-008.
14. THE HOUSING WILL WITHSTAND EXPOSURE TO 260°C PEAK TEMPERATURE FOR 15 SECONDS IN A CONVECTION, INFRARED OR VAPOR PHASE REFLOW OVEN.

www.fciconnect.com			surface 3.2 ASME Y14.5 <input checked="" type="checkbox"/>	tolerance std ASME Y14.5 -	projection 	MM 		
			TOLERANCES UNLESS OTHERWISE SPECIFIED					
Dr	R. DRAGGOO	2002-01-07	ANGULAR	LINEAR	0.X	±.30	size A4	Scale 13:10
Eng	S. OLSON	2001-09-11			0.XX	±.10		
Chr	HIRAN V N	2006-02-26			0°.XXX	±.050		
Appr	HIRAN V N	2006-02-26	Product family EyeMax (tm)		Spec ref -			
			4X R/A RECPT. ASSEMBLY w/MOUNTING TABS		dwg no 58369		Rev. L	
			catalog no -		CUSTOMER		sheet 9 of 9	

X-ON Electronics

Largest Supplier of Electrical and Electronic Components

Click to view similar products for [Amphenol](#) manufacturer:

Other Similar products are found below :

[PT01SE-16-8P\(027\)](#) [PT01SE-16-8P\(476\)](#) [CTV06RW-11-2JB-LC](#) [97-3108A-22-14P](#) [10-474017-10P](#) [MS27473P14B18S](#) [TV06RW-25-90AE](#)
[PT02E10-2PW](#) [PT02E10-2PX](#) [97-3106A18-3PX-958](#) [97-3106A18-3PY-958](#) [TV06RL-13-35AD](#) [TV06RL-13-98BD](#) [TV06RW-25-46AE](#)
[TV06RL-13-35SD-LC](#) [TV06RL-13-35SD](#) [TV06RL-13-98SD-LC](#) [TV06RL-13-98SD](#) [TVP00RW-23-53AD](#) [PT02E10-2PW-025](#) [100-007-213-002-001](#) [2M805-002-16NF23-12PA](#) [97-3108B16S-5PW-417](#) [97-3108B16S-5PY-417](#) [CS-DSDMDB37MF-025](#) [97-3108B16S-5PZ-417](#)
[PT06SE2041P](#) [CF-5A9013-04N](#) [CF-6A4615-06N](#) [GTC02R32-17S-025-RDS-LC](#) [GTC02R32-17S-025-LC](#) [PT06SE-24-61P\(LC\)](#) [SP28W1F](#)
[TV07DT-25-37P](#) [TV07DT-25-37JN-LC](#) [TV07DT-25-37S](#) [TV07DT-25-37S-LC](#) [TV07DT-25-46P-LC](#) [97-3101A20-21P-958](#) [TV07DT-25-90P-LC](#) [TV07DT-25-46A](#) [TV07DT-25-37P-LC](#) [GTS08-36-22PZ-025-B30](#) [PT00SP2241P](#) [LJT06RT-15-35PB\(023\)](#) [TV06RW-23-53AB](#)
[LJT06RT-15-68PB-023](#) [97-3106A-22-9S\(621\)](#) [PT06A14-4S-005](#) [TVS07RF-15-19BB](#)