

| | | | | | | | | | | |
|---------------------------------------|---------|--------|---------------|-------------|--|----|------------------------|----|---------------|------|
| spec ref - | | dr | Louis Ng | 2010/10/27 | projection | MM | size | A3 | scale | 10:1 |
| tolerance std | | eng | Laurence Zang | 2018/07/09 | | | ecn no | | ELX-N-30566-1 | |
| ISO 406 ISO 1101 | | chr | - | - | | | rel level | | Released | |
| TOLERANCES UNLESS OTHERWISE SPECIFIED | | appr | Tim Yao | 2018/07/09 | product family | | MINITEK | | rev | |
| surface | | linear | 0.X | ±0.25 | Amphenol FCI POL. MINITEK VCC WITH LATCHING | | dwg no 63440 | | rev M | |
| | | | 0.XX | ±0.13 | | | | | | |
| | | | 0.XXX | ±0.05 | | | | | | |
| ISO 1302 | angular | 0° | ±3° | www.fci.com | cat. no. | - | Product - Customer Drw | | sheet 1 of 2 | |

| PRODUCT NO. NOTE 8 | POS. | DIM A | DIM B | DIM C | DIM D | POL. POS | TERM. DELETED | COLOR |
|-----------------------|--------|-------|-------|-------|-------|-----------|---------------|-------|
| 63440-X01 | 2 X 16 | 30.00 | 32.80 | 16.40 | 1.20 | 1,2,31,32 | 1,2,31,32 | BEIGE |
| 63440-X02 | 2 X 3 | 4.00 | 6.80 | 3.40 | 1.20 | 3 | 3 | BEIGE |
| 63440-X03 | 2 X 16 | 30.00 | 32.80 | 16.40 | 1.20 | 1,31 | 1,31 | BEIGE |
| 63440-X04 | 2 X 3 | 4.00 | 6.80 | 3.40 | 1.20 | 3 | 3,4 | BEIGE |
| 63440-X05 | 2 X 6 | 10.00 | 12.80 | 6.40 | 1.20 | 1,2,11,12 | 1,2,11,12 | BEIGE |
| 63440-X06 | 2 X 11 | 20.00 | 22.80 | 11.40 | 2.50 | 19,20 | 19,20 | BLACK |
| 63440-X07 | 2 X 16 | 30.00 | 32.80 | 16.40 | 2.50 | 21,22 | 21,22 | BLACK |
| 63440-X08 | 2 X 17 | 32.00 | 34.80 | 17.40 | 2.50 | 17,18 | 17,18 | BLACK |



| PLATING | DESCRIPTION SEE NOTE 4 |
|---------|---------------------------|
| 0 | 0.2µm/ 8µ" Au |
| 1 | 0.76µm/ 30µ" Au |
| 2 | UNASSIGNED |
| 3 | 0.38µm/ 15µ" Au |

NOTES:

- HOUSING: HIGH TEMPERATURE THERMAL PLASTIC, UL 94V-0
- TERMINAL MATERIAL: COPPER ALLOY
- SITE CODE TO BE LOCATED AS SHOWN.
- PLATING: Au OVER 1.27µm/50µ" Ni AT CONTACT.
- POLARISED POS REFER TO TABLE. SEE FIG.1 FOR SECTIONAL VIEW.
- TERMINALS TO BE DELETED REFER TO TABLE FOR POS.
- POLARISED AND TERMINAL DELETED IN THE SAME POSITION REFER TO FIGURE2.

11 THE HOUSING WILL WITHSTAND EXPOSURE TO 250°C PEAK TEMPERATURE FOR 10 SECONDS IN A CONVECTION, INFRA-RED OR VAPOR PHASE REFLOW OVEN.

12 THE HOUSING WILL WITHSTAND EXPOSURE TO 260°C PEAK TEMPERATURE FOR 10 SECONDS IN A WAVE SOLDER APPLICATION WITH A 1.57MM MINIMUM THICK CIRCUIT BOARD.

13 THIS PRODUCT MEETS EUROPEAN UNION DIRECTIVES AND OTHER COUNTRY REGULATIONS AS DESCRIBED IN GS-22-008.

14 A SYMBOL WILL BE NEXT TO ANY DIMENSION, VIEW OR NOTE WHICH HAS BEEN MODIFIED WITH THE CURRENT DRAWING REVISION.

8) PRODUCT DESCRIPTION CODE:

XXXXX-XXXLF

- LEAD FREE (SEE NOTES 9 & 13)
- TOTAL POSITIONS
- CONTACT AREA PLATING
- BASE NUMBER

9) SOLDER TAIL PLATING:

a) SOLDER TAIL OF P/N:63440-XXXLF IS 100% MATTE TIN PLATED.

10. PACKAGE: 63440-XXXLF STANDARD PACKAGE IN TUBE
63440-XXXTRNLF PACKAGE IN TAPE & REEL W/O CAP

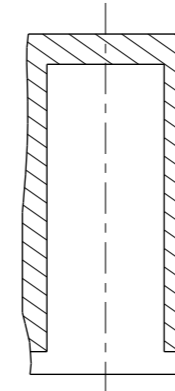


FIG. 2

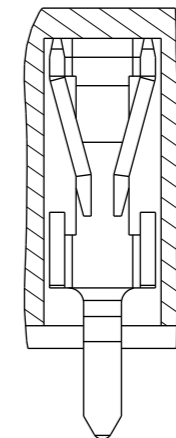


FIG. 1

| | | | | | | | | | |
|--------------|---------------|------------|--------------------------------|---------|------------------------|---------------|-----------|--------------|---|
| dr | Louis Ng | 2010/10/27 | projection | MM | size | A3 | scale | 10:1 | |
| eng | Laurence Zang | 2018/07/09 | | ← → | ecn no | ELX-N-30566-1 | rel level | Released | |
| chr | - | - | | | | | | | |
| appr | Tim Yao | 2018/07/09 | product family | MINITEK | | | | | |
| Amphenol FCI | | | POL. MINITEK VCC WITH LATCHING | | dwg no | 63440 | | rev | M |
| www.fci.com | | | cat. no. | - | Product - Customer Drw | | | sheet 2 of 2 | |

A

B

C

D

A

B

C

D



X-ON Electronics

Largest Supplier of Electrical and Electronic Components

Click to view similar products for [Amphenol manufacturer](#):

Other Similar products are found below :

[PT01SE-16-8P\(027\)](#) [PT01SE-16-8P\(476\)](#) [CTV06RW-11-2JB-LC](#) [97-3108A-22-14P](#) [10-474017-10P](#) [MS27473P14B18S](#) [TV06RW-25-90AE](#)
[CTVS06RF-25-46PB-LC](#) [PT02E10-2PW](#) [PT02E10-2PX](#) [97-3106A18-3PX-958](#) [97-3106A18-3PY-958](#) [PT06J20-24SW](#) [TV06RL-13-35AD](#)
[TV06RL-13-98BD](#) [TV06RW-25-46AE](#) [TV06RL-13-35SD-LC](#) [TV06RL-13-35SD](#) [TV06RL-13-98SD-LC](#) [TV06RL-13-98SD](#) [TVP00RW-23-](#)
[53AD](#) [PT02E10-2PW-025](#) [100-007-213-002-001](#) [2M805-002-16NF23-12PA](#) [97-3108B16S-5PW-417](#) [97-3108B16S-5PY-417](#) [CS-](#)
[DSDMDB37MF-025](#) [97-3108B16S-5PZ-417](#) [GTC02R32-17S-025-RDS](#) [PT06SE2041P](#) [CF-5A9013-04N](#) [CF-6A4615-06N](#) [GTC02R32-17S-](#)
[025-RDS-LC](#) [GTC02R32-17S-025-LC](#) [PT06SE-24-61P\(LC\)](#) [SP28W1F](#) [TV07DT-25-37P](#) [TV07DT-25-37JN-LC](#) [TV07DT-25-37S](#) [TV07DT-](#)
[25-37S-LC](#) [TV07DT-25-46P-LC](#) [97-3101A20-21P-958](#) [TV07DT-25-90P-LC](#) [TV07DT-25-46A](#) [TV07DT-25-37P-LC](#) [GTS08-36-22PZ-025-](#)
[B30](#) [PT00SP2241P](#) [CTVPS00RF-15-15AC](#) [LJT06RT-15-35PB\(023\)](#) [TVS07RF-15-15AB](#)