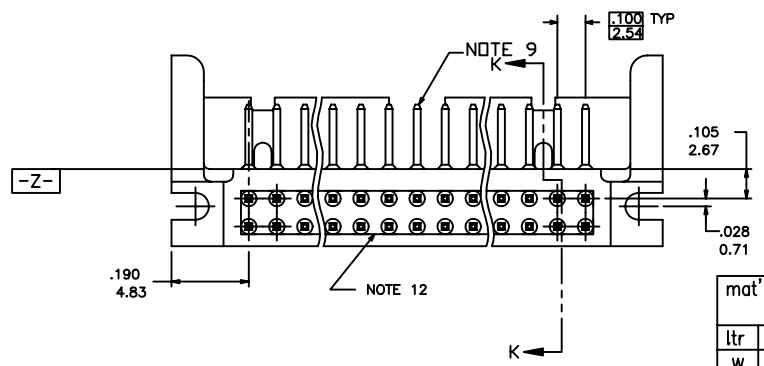
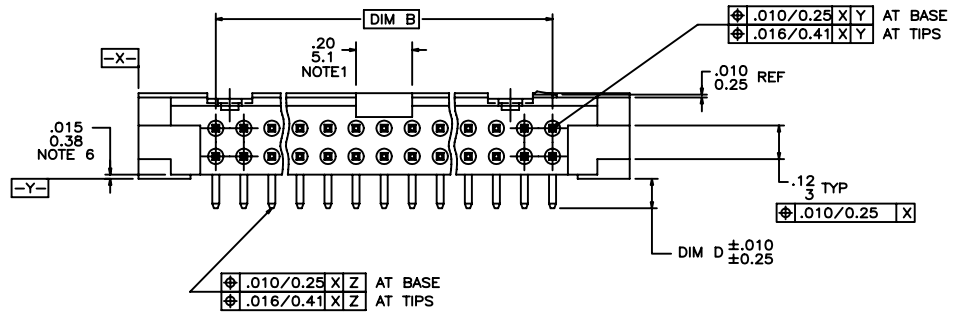
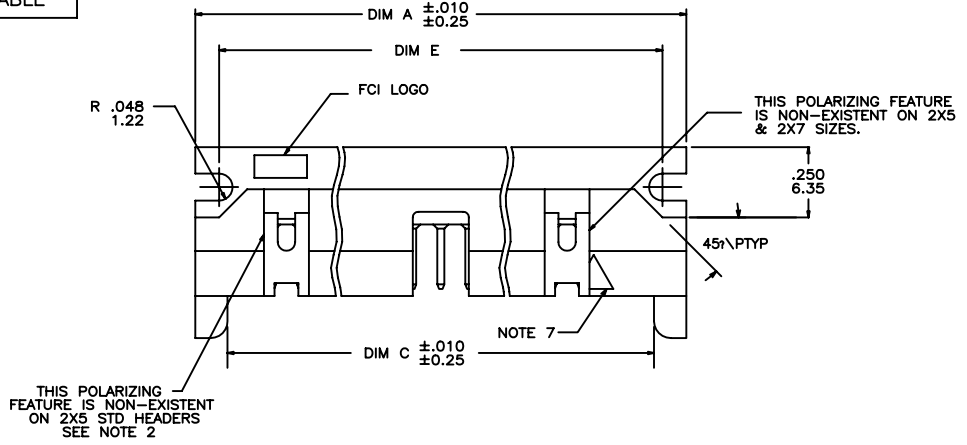


PRODUCT NO.
SEE TABLE



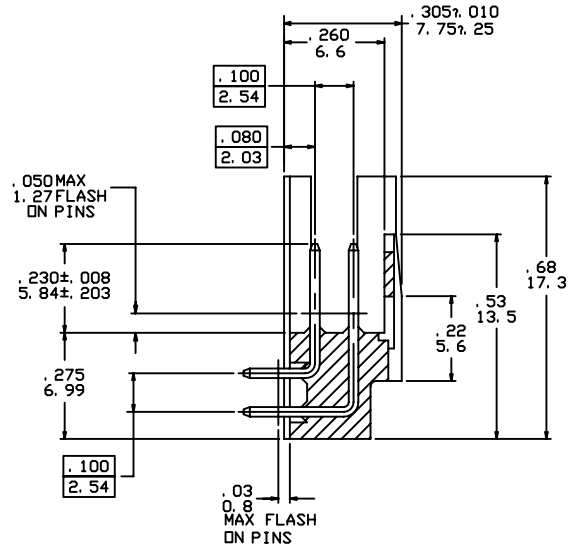
Tous droits strictement reserves. Reproduction ou communication a des tiers interdite sous quelque forme que ce soit sans autorisation écrite du propriétaire. Propriete de c FCI. Droits de reproduction FCI.



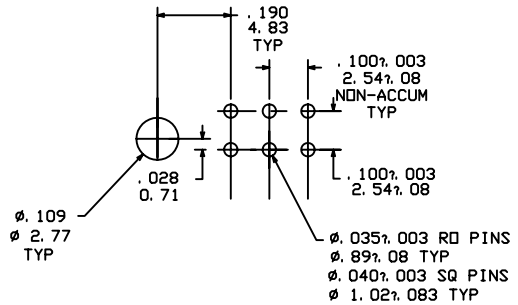
All rights strictly reserved. Reproduction or issue to third parties in any form whatever is not permitted without written authority from the proprietor. Property of FCI. Copyright FCI.

mat'l. code SEE NOTE 3				tolerances unless otherwise specified			CUSTOMER COPY		 www.fciconnect.com	
ltr	ecn no	dr	date	linear	.xx ±.01/.x±.3		projection	title		
W	T10173	MRC	09/03/91		.xxx ±.005/.xx±.13			HEADER,QUICKIE		
X	V04-0921	PJ	09/21/04	angles	.xxx ±.0020/.xxx±.051		 INCH/MM	SLIM LINE,RIGHT ANGLE		
Y	N05-0123	ZC	5/9/05		0° ±2°			product family QKE.HDR. code		
AA	N07-0151	WG	7/26/07	dr	P.JAYADEEP	09/21/04	scale	A	65496	213
				enr	H.SUNDY	09/21/04				
				chr	H.SUNDY	09/21/04				
				appd	H.SUNDY	09/21/04				
sheet	revision	AA	AA	AA	AA	AA	AA			
index	sheet	1	2	3	4	5	6	7		

PRODUCT NO.
SEE TABLE



SECTION K-K
SCALE 8/1



RECOMMENDED HOLE PATTERN
SCALE 10/1

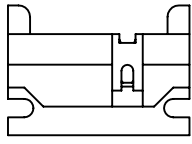
NOTES:

- ① POLARIZING SLOT NON-EXISTENT ON STYLE A 2 X 5 ONLY.
- ② STD. 2 X 5 HEADERS WILL HAVE NO DESIGNATION IN CHART. STYLE A 2 X 5 HEADERS WILL BE DESIGNATED STYLE A IN CHARTS.
- ③ MOLDING MAT'L: GLASS FILLED POLYESTER, FLAME RETARDANT PER UL94, V-0. COLOR - BLUE.
4. 1° MAX DRAFT PERMISSIBLE ON ALL SURFACES UNLESS OTHERWISE INDICATED.
5. .37/9.4 MAX DIM FROM MOUNTING SLOT TO EDGE OF BOARD FOR DIASY CHAIN.
- ⑥ .015/ .38 STANDOFF LOCATED APPROX AS SHOWN.
- ⑦ ARROW IDENTIFICATION DENOTING PIN#1 POSITION.
8. PIN MAT'L: PHOS. BRONZE UNS-C51000.
- ⑨ OPTIONAL PLATING ON LEAD -IN OF PINS.
- ⑩ RECOMMENDED MOUNTING SCREW SIZE #2-56 X 3/8 LG FILLISTER HEAD MACHINE SCREW FOR 1/16, 3/32, & 1/8 BOARDS.
- ⑪ TAIL TIPS TO BE TIN LEAD DIPPED, DIP LENGTH TO BE DIM "D" MINUS .02/ .05 MAX. 100u"/2.54um MIN.
- ⑫ CORING OPTIONAL FOR MANUFACTURING AROUND TERMINAL TAILS.
13. 65496-***LF IS JUST A LEAD FREE PRODUCT.
14. THE HOUSING OF XXXXX-XYLF WILL WITHSTAND EXPOSURE TO 260°C PEAK TEMPERATURE FOR 10 SECONDS IN A WAVE SOLDER PROCESS.
15. PLATING OPTION : MAYBE EITER GOLD OR GXT PLATING AT MANUFACTURER SITE

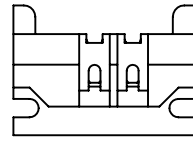
Tous droits strictement reserves. Reproduction ou communication a des tiers interdite sous quelque forme que ce soit sans autorisation écrite du propriétaire. Propriete de c FCI. Droits de reproduction FCI.



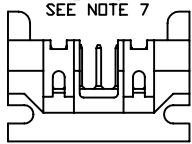
All rights strictly reserved. Reproduction or issue to third parties in any form whatever is not permitted without written authority from the proprietor. Property of FCI. Copyright FCI.



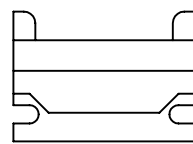
STYLE A
2 X 5
SEE NOTE 7



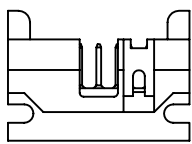
STYLE C



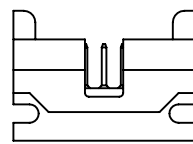
2 X 8 OR MORE PINS
STYLE B



STYLE D



STANDARD 2 X 7
STYLE B



STANDARD 2 X 5
STYLE B

mat'l. code		tolerances unless otherwise specified		CUSTOMER COPY		FCI www.fciconnect.com	
ltr	ecn no	dr	date	linear	projection	title	
AA						HEADER, QUICKIE SLIM LINE, RIGHT ANGLE	
				angles	INCH/MM	product family	
				0° ± 2°		QKE.HDR.	
				dr	scale	size	
				P.JAYADEEP		dwg no	
				engr		213	
				H.SUNDY		sheet	
				chr	5:1	2 of 7	
				H.SUNDY			
				appd			
sheet index	revision sheet						

PDM: Rev:AA

STATUS: Released
26 Printed: Apr 12, 2011

Tous droits strictement reserves. Reproduction ou communication a des tiers interdite sous quelque forme que ce soit sans autorisation ecrite du proprietaire. Propriete de c FCI. Droits de reproduction FCI.



All rights strictly reserved. Reproduction or issue to third parties in any form whatever is not permitted without written authority from the proprietor. Property of FCI. Copyright FCI.

PRODUCT NO.	SIZE	STYLE	DIM A	DIM B	DIM C	DIM D	DIM E	TERM CONFIG	TERMINAL PLATING NOTE 15
65496-001	2 X 5	B	.95/24.13	.400/10.16	.72/18.29	.105/2.67	.78/19.81	ROUND	30u"/.76um Au- 50u"/1.27um Ni
-002						.150/3.81		SQ	150u"/3.81um TIN
-003						.675/17.15		SQ	30u"/.76um Au- 50u"/1.27um Ni
-004						.105/2.67		SQ	150u"/3.81um TIN
-005						.150/3.81		ROUND	30u"/.76um Au- 50u"/1.27um Ni
-006	2 X 5		.95/24.13	.400/10.16	.72/18.29	.675/17.15	.78/19.81	SQ	150u"/3.81um TIN
-007	2 X 10		1.45/36.83	.900/22.86	1.22/30.99	.105/2.67	1.28/32.51	ROUND	30u"/.76um Au- 50u"/1.27um Ni
-008						.150/3.81		SQ	150u"/3.81um TIN
-009						.675/17.15		SQ	30u"/.76um Au- 50u"/1.27um Ni
-010						.105/2.67		SQ	150u"/3.81um TIN
-011						.150/3.81		ROUND	30u"/.76um Au- 50u"/1.27um Ni
-012	2 X 10		1.45/36.83	.900/22.86	1.22/30.99	.675/17.15	1.28/32.51	SQ	150u"/3.81um TIN
-013	2 X 13		1.75/44.45	1.200/30.48	1.52/38.61	.105/2.67	1.58/40.13	ROUND	30u"/.76um Au- 50u"/1.27um Ni
-014						.150/3.81		SQ	150u"/3.81um TIN
-015						.675/17.15		SQ	30u"/.76um Au- 50u"/1.27um Ni
-016						.105/2.67		SQ	150u"/3.81um TIN
-017						.150/3.81		ROUND	30u"/.76um Au- 50u"/1.27um Ni
-018	2 X 13		1.75/44.45	1.200/30.48	1.52/38.61	.675/17.15	1.58/40.13	SQ	150u"/3.81um TIN
-019	2 X 17		2.15/54.61	1.600/40.64	1.92/48.77	.105/2.67	1.98/50.29	ROUND	30u"/.76um Au- 50u"/1.27um Ni
-020						.150/3.81		SQ	150u"/3.81um TIN
-021						.675/17.15		SQ	30u"/.76um Au- 50u"/1.27um Ni
-022						.105/2.67		SQ	150u"/3.81um TIN
-023						.150/3.81		ROUND	30u"/.76um Au- 50u"/1.27um Ni
-024	2 X 17		2.15/54.61	1.600/40.64	1.92/48.77	.675/17.15	1.98/50.29	SQ	150u"/3.81um TIN
-025	2 X 20		2.45/62.23	1.900/48.26	2.22/56.39	.105/2.67	2.28/57.91	ROUND	30u"/.76um Au- 50u"/1.27um Ni
-026						.150/3.81		SQ	150u"/3.81um TIN
-027						.675/17.15		SQ	30u"/.76um Au- 50u"/1.27um Ni
-028						.105/2.67		SQ	150u"/3.81um TIN
-029						.150/3.81		ROUND	30u"/.76um Au- 50u"/1.27um Ni
-030	2 X 20		2.45/62.23	1.900/48.26	2.22/56.39	.675/17.15	2.28/57.91	SQ	150u"/3.81um TIN
-031	2 X 25		2.95/74.93	2.400/60.96	2.72/69.09	.105/2.67	2.78/70.61	ROUND	30u"/.76um Au- 50u"/1.27um Ni
-032						.150/3.81		SQ	150u"/3.81um TIN
-033						.675/17.15		SQ	30u"/.76um Au- 50u"/1.27um Ni
-034						.105/2.67		SQ	150u"/3.81um TIN
65496-035	2 X 25	B	2.95/74.93	2.400/60.96	2.72/69.09	.150/3.81	2.78/70.61	ROUND	30u"/.76um Au- 50u"/1.27um Ni

mat'l. code		tolerances unless otherwise specified		CUSTOMER COPY			
ltr	ecn no	dr	date	linear	.XX ±.01/.X±.3	projection	title
AA				angles	.XXX ±.005/.XX±.13		HEADER,QUICKIE
				dr	.XXXX ±.0020/.XXX±.051	INCH/MM	SLIM LINE,RIGHT ANGLE
				enr	0° ±2°	scale	product family
				chr	P.JAYADEEP 09/21/04	5:1	QKE.HDR.
				appd	H.SUNDY 09/21/04		code
sheet index	revision sheet						size
							dwg no
							213
							sheet
							3 of 7

Tous droits strictement reserves. Reproduction ou communication a des tiers interdite sous quelque forme que ce soit sans autorisation ecrite du proprietaire. Propriete de c FCI. Droits de reproduction FCI.



All rights strictly reserved. Reproduction or issue to third parties in any form whatever is not permitted without written authority from the proprietor. Property of FCI. Copyright FCI.

PRODUCT NO.	SIZE	STYLE	DIM A	DIM B	DIM C	DIM D	DIM E	TERM CONFIG	TERMINAL PLATING NOTE 15
65496-036	2 X 25	B	2.95/74.93	2.400/50.96	2.72/69.09	.675/17.15	2.78/70.61	SQ	30u"/.76um Au- 50u"/1.27um Ni
-037	2 X 7		1.15/29.21	.600/15.24	.92/23.37	.105/2.67	.98/24.89	ROUND	150u"/3.81um TIN
-038						.150/3.81		SQ	30u"/.76um Au- 50u"/1.27um Ni
-039						.675/17.15		SQ	150u"/3.81um TIN
-040						.105/2.67		SQ	30u"/.76um Au- 50u"/1.27um Ni
-041						.150/3.81		ROUND	150u"/3.81um TIN
-042	2 X 7		1.15/29.21	.600/15.24	.92/23.37	.675/17.15	.98/24.89	SQ	30u"/.76um Au- 50u"/1.27um Ni
-043	2 X 8		1.25/31.75	.700/17.78	1.02/25.91	.105/2.67	1.08/27.43	ROUND	150u"/3.81um TIN
-044						.150/3.81		SQ	30u"/.76um Au- 50u"/1.27um Ni
-045						.675/17.15		SQ	150u"/3.81um TIN
-046						.105/2.67		SQ	30u"/.76um Au- 50u"/1.27um Ni
-047						.150/3.81		ROUND	150u"/3.81um TIN
-048	2 X 8		1.25/31.75	.700/17.78	1.02/25.91	.675/17.15	1.08/27.43	SQ	30u"/.76um Au- 50u"/1.27um Ni
-049	2 X 30		3.45/87.63	2.900/73.66	3.22/81.79	.105/2.67	3.28/83.31	ROUND	150u"/3.81um TIN
-050						.150/3.81		SQ	30u"/.76um Au- 50u"/1.27um Ni
-051						.675/17.15		SQ	150u"/3.81um TIN
-052						.105/2.67		SQ	30u"/.76um Au- 50u"/1.27um Ni
-053						.150/3.81		ROUND	150u"/3.81um TIN
-054	2 X 30		3.45/87.63	2.900/73.66	3.22/81.79	.675/17.15	3.28/83.31	SQ	30u"/.76um Au- 50u"/1.27um Ni
-055	2 X 5		.95/24.13	.400/10.16	.72/18.29	.105/2.67	.78/19.81	ROUND	150u"/3.81um TIN
-056	2 X 5		.95/24.13	.400/10.16	.72/18.29	.150/3.81	.78/19.81	ROUND	
-057	2 X 5		.95/24.13	.400/10.16	.72/18.29	.675/17.15	.78/19.81	SQ	
-058	2 X 7		1.15/29.21	.600/15.24	.92/23.37	.105/2.67	.98/24.89	ROUND	
-059	2 X 7		1.15/29.21	.600/15.24	.92/23.37	.150/3.81	.98/24.89	ROUND	
-060	2 X 7		1.15/29.21	.600/15.24	.92/23.37	.675/17.15	.98/24.89	SQ	
-061	2 X 8		1.25/31.75	.700/17.78	1.02/25.91	.105/2.67	1.08/27.43	ROUND	
-062	2 X 8		1.25/31.75	.700/17.78	1.02/25.91	.150/3.81	1.08/27.43	ROUND	
-063	2 X 8		1.25/31.75	.700/17.78	1.02/25.91	.675/17.15	1.08/27.43	SQ	
-064	2 X 10		1.45/36.83	.900/22.86	1.22/30.99	.105/2.67	1.28/32.51	ROUND	
-065	2 X 10		1.45/36.83	.900/22.86	1.22/30.99	.150/3.81	1.28/32.51	ROUND	
-066	2 X 10		1.45/36.83	.900/22.86	1.22/30.99	.675/17.15	1.28/32.51	SQ	
-067	2 X 13		1.75/44.45	1.200/30.48	1.52/38.61	.105/2.67	1.58/40.13	ROUND	
-068	2 X 13		1.75/44.45	1.200/30.48	1.52/38.61	.150/3.81	1.58/40.13	ROUND	
-069	2 X 13		1.75/44.45	1.200/30.48	1.52/38.61	.675/17.15	1.58/40.13	SQ	
65496-070	2 X 17	B	2.15/54.61	1.600/40.64	1.92/48.77	.105/2.67	1.98/50.29	ROUND	30u"/.76um Au- 50u"/1.27um Ni

mat'l. code		tolerances unless otherwise specified		CUSTOMER COPY			
ltr	ecn no	dr	date	linear	.XX ±.01/.X±.3	projection	title
AA					.XXX ±.005/.XX±.13		HEADER,QUICKIE
				angles	.XXX ±.0020/.XXX±.051	INCH/MM	SLIM LINE,RIGHT ANGLE
				dr	0° ±2°	scale	product family
				enr	P.JAYADEEP 09/21/04	2:1	QKE.HDR.
				chr	H.SUNDY 09/21/04		code
				appd	H.SUNDY 09/21/04		213
sheet index	revision sheet						size dwg no
							65496
							sheet
							4 of 7

Tous droits strictement reserves. Reproduction ou communication a des tiers interdite sous quelque forme que ce soit sans autorisation ecrite du proprietaire. Propriete de c FCI. Droits de reproduction FCI.



All rights strictly reserved. Reproduction or issue to third parties in any form whatever is not permitted without written authority from the proprietor. Property of FCI. Copyright FCI.

PRODUCT NO	SIZE	STYLE	DIM A	DIM B	DIM C	DIM D	DIM E	TERM CONFIG	TERMINAL PLATING NOTE 15
65496-071	2 X 17	B	2.15/54.61	1.600/40.64	1.92/48.77	.150/3.81	1.98/50.29	ROUND	30u"/.76um Au- 50u"/1.27um Ni
-072	2 X 17		2.15/54.61	1.600/40.64	1.92/48.77	.675/17.15	1.98/50.29	SQ	
-073	2 X 20		2.45/62.23	1.900/48.26	2.22/56.39	.105/2.67	2.28/57.91	ROUND	
-074	2 X 20		2.45/62.23	1.900/48.26	2.22/56.39	.150/3.81	2.28/57.91	ROUND	
-075	2 X 20		2.45/62.23	1.900/48.26	2.22/56.39	.675/17.15	2.28/57.91	SQ	
-076	2 X 25		2.95/74.93	2.400/60.96	2.72/69.09	.105/2.67	2.78/70.61	ROUND	
-077	2 X 25		2.95/74.93	2.400/60.96	2.72/69.09	.150/3.81	2.78/70.61	ROUND	
-078	2 X 25		2.95/74.93	2.400/60.96	2.72/69.09	.675/17.15	2.78/70.61	SQ	
-079	2 X 30		3.45/87.63	2.900/73.66	3.22/81.79	.105/2.67	3.28/33.31	ROUND	
-080	2 X 30		3.45/87.63	2.900/73.66	3.22/81.79	.150/3.81	3.28/33.31	ROUND	
-081	2 X 30	B	3.45/87.63	2.900/73.66	3.22/81.79	.675/17.15	3.28/33.31	SQ	
-082	2 X 5	A	.95/24.13	.400/10.16	.72/18.29	.105/2.67	.78/19.81	ROUND	
-083						.150/3.81		ROUND	
-084						.675/17.15		SQ	30u"/.76um Au- 50u"/1.27um Ni
-085						.105/2.67		ROUND	30u"/.76um Au- 50u"/1.27um Ni
-086						.150/3.81		ROUND	30u"/.76um Au- 50u"/1.27um Ni
-087						.675/17.15		SQ	30u"/.76um Au- 50u"/1.27um Ni
-088						.105/2.67		SQ	150u"/3.81um TIN
-089						.150/3.81		SQ	150u"/3.81um TIN
-090		A				.675/17.15		SQ	150u"/3.81um TIN
-091		B				.105/2.67		ROUND	30u"/.76um GXT/GOLD FLASH
-092	2 X 5	A	.95/24.13	.400/10.16	.72/18.29	.105/2.67	.78/19.81	ROUND	30u"/.76um GXT/GOLD FLASH
-093	2 X 10	B	1.45/36.83	.900/22.86	1.22/30.99	.105/2.67	1.28/32.51	ROUND	30u"/.76um GXT/GOLD FLASH
-094	2 X 20		2.45/62.23	1.900/48.26	2.22/56.39	.150/3.81	2.28/57.91	ROUND	30u"/.76um GXT/GOLD FLASH
-095	2 X 7		1.15/29.21	.600/15.24	.92/23.37	.675/17.15	.98/24.89	SQ	30u"/.76um GXT/GOLD FLASH
-096	2 X 10		1.45/36.83	.900/22.86	1.22/30.99	.105/2.67	1.28/32.51	SQ	30u"/.76um Au- 50u"/1.27um Ni
-097	2 X 15		1.95/49.53	1.400/35.56	1.72/43.69		1.78/45.21	SQ	30u"/.76um Au- 50u"/1.27um Ni
-098	2 X 17		2.15/54.61	1.600/40.64	1.92/48.77		1.98/50.29	SQ	30u"/.76um Au- 50u"/1.27um Ni
-099	2 X 20		2.45/62.23	1.900/48.26	2.22/56.39		2.28/57.91	SQ	30u"/.76um Au- 50u"/1.27um Ni
-100	2 X 30		3.45/87.63	2.900/73.66	3.22/81.79		3.28/33.31	SQ	30u"/.76um Au- 50u"/1.27um Ni
-101	2 X 12		1.65/41.91	1.100/27.94	1.42/36.07	.105/2.67	1.48/37.60	ROUND	30u"/.76um Au- 50u"/1.27um Ni
-102			1.65/41.91	1.100/27.94	1.42/36.07	.150/3.81		ROUND	30u"/.76um Au- 50u"/1.27um Ni
-103			1.65/41.91	1.100/27.94	1.42/36.07	.675/17.15		SQ	30u"/.76um Au- 50u"/1.27um Ni
-104			1.65/41.91	1.100/27.94	1.42/36.07	.105/2.67		ROUND	30u"/.76um Au- 50u"/1.27um Ni
65496-105	2 X 12	B	1.65/41.91	1.100/27.94	1.42/36.07	.150/3.81	1.48/37.60	ROUND	30u"/.76um Au- 50u"/1.27um Ni

mat'l. code		tolerances unless otherwise specified		CUSTOMER COPY		FCI www.fciconnect.com	
ltr	ecn no	dr	date	linear	.XX ±.01/.X±.3	projection	title HEADER,QUICKIE SLIM LINE,RIGHT ANGLE
AA					.XXX ±.005/.XX±.13		
				angles	0° ±2°	scale	product family size KQE.HDR. 65496
				dr	P.JAYADEEP 09/21/04		
				enr	H.SUNDY 09/21/04	A	sheet 5 of 7
				chr	H.SUNDY 09/21/04		
				appd	H.SUNDY 09/21/04		
sheet index	revision sheet						

Tous droits strictement reserves. Reproduction ou communication a des tiers interdite sous quelque forme que ce soit sans autorisation ecrite du proprietaire. Propriete de c FCI. Droits de reproduction FCI.



All rights strictly reserved. Reproduction or issue to third parties in any form whatever is not permitted without written authority from the proprietor. Property of FCI. Copyright FCI.

PRODUCT NO.	SIZE	STYLE	DIM A	DIM B	DIM C	DIM D	DIM E	TERM CONFIG	TERMINAL PLATING NOTE 15
65496-106	2 X 12	B	1.65/41.91	1.100/27.94	1.42/36.07	.675/17.15	1.48/37.60	SQ	30u"/.76um Au- 50u"/1.27um Ni
-107						.105/2.67		ROUND	30u"/.76um GXT/GOLD FLASH
-108						.150/3.81		ROUND	30u"/.76um GXT/GOLD FLASH
-109						.675/17.15		SQ	30u"/.76um GXT/GOLD FLASH
-110						.105/2.67		SQ	150u"/3.81um TIN
-111						.150/3.81		SQ	150u"/3.81um TIN
-112	2 X 12		1.65/41.91	1.100/27.94	1.42/36.07	.675/17.15	1.48/37.60	SQ	150u"/3.81um TIN
-113	2 X 15		1.95/49.53	1.400/35.60	1.72/43.69	.105/2.67	1.78/45.21	ROUND	30u"/.76um Au- 50u"/1.27um Ni
-114						.150/3.81		ROUND	30u"/.76um Au- 50u"/1.27um Ni
-115						.675/17.15		SQ	30u"/.76um Au- 50u"/1.27um Ni
-116						.105/2.67		ROUND	30u"/.76um Au- 50u"/1.27um Ni
-117						.150/3.81		ROUND	30u"/.76um Au- 50u"/1.27um Ni
-118						.675/17.15		SQ	30u"/.76um Au- 50u"/1.27um Ni
-119						.105/2.67		ROUND	30u"/.76um GXT/GOLD FLASH
-120						.150/3.81		ROUND	30u"/.76um GXT/GOLD FLASH
-121						.675/17.15		SQ	30u"/.76um GXT/GOLD FLASH
-122						.105/2.67		SQ	150u"/3.81um TIN
-123						.150/3.81		SQ	150u"/3.81um TIN
-124	2 X 15		1.95/49.53	1.400/35.60	1.72/43.69	.675/17.15	1.78/45.21	SQ	150u"/3.81um TIN
-125	2 X 22		2.65/67.31	2.100/53.34	2.42/61.47	.105/2.67	2.48/63.00	ROUND	30u"/.76um Au- 50u"/1.27um Ni
-126						.150/3.81		ROUND	30u"/.76um Au- 50u"/1.27um Ni
-127						.675/17.15		SQ	30u"/.76um Au- 50u"/1.27um Ni
-128						.105/2.67		ROUND	30u"/.76um Au- 50u"/1.27um Ni
-129						.150/3.81		ROUND	30u"/.76um Au- 50u"/1.27um Ni
-130						.675/17.15		SQ	30u"/.76um Au- 50u"/1.27um Ni
-131						.105/2.67		ROUND	30u"/.76um GXT/GOLD FLASH
-132						.150/3.81		ROUND	30u"/.76um GXT/GOLD FLASH
-133						.675/17.15		SQ	30u"/.76um GXT/GOLD FLASH
-134						.105/2.67		SQ	150u"/3.81um TIN
-135						.150/3.81		SQ	150u"/3.81um TIN
-136	2 X 22		2.65/67.31	2.100/53.34	2.42/61.47	.675/17.15	2.48/63.00	SQ	150u"/3.81um TIN
-137	2 X 5	B	.95/24.13	.400/10.16	.72/18.29	.150/3.81	.78/19.81	ROUND	30u"/.76um GXT/GOLD FLASH
-138	2 X 5	A	.95/24.13	.400/10.16	.72/18.29		.78/19.81	ROUND	30u"/.76um GXT/GOLD FLASH
-139	2 X 7	B	1.15/29.21	.600/15.24	.92/23.37		.98/24.89	ROUND	30u"/.76um GXT/GOLD FLASH
65496-140	2 X 8	B	1.25/31.75	.700/17.78	1.02/25.91	.150/3.81	1.08/27.43	ROUND	30u"/.76um GXT/GOLD FLASH

mat'l. code		tolerances unless otherwise specified		CUSTOMER COPY			
ltr	ecn no	dr	date	linear	projection	title	
AA				.XX ±.01/.X±.3		HEADER,QUICKIE	
				.XXX ±.005/.XX±.13		SLIM LINE,RIGHT ANGLE	
				.XXXX ±.0020/.XXX±.051		product family	code
				angles	INCH/MM	KQE.HDR.	213
				dr	5:1	size	sheet
				enr		65496	6 of 7
				chr			
				appd			
sheet index	revision sheet						

All rights strictly reserved. Reproduction or issue to third parties in any form whatever is not permitted without written authority from the proprietor. Property of FCI. Copyright FCI.



Tous droits strictement réservés. Reproduction ou communication à des tiers interdite sous quelque forme que ce soit sans autorisation écrite du propriétaire. Propriété de c FCI. Droits de reproduction FCI.

PRODUCT NO.	SIZE	STYLE	DIM A	DIM B	DIM C	DIM D	DIM E	TERM CONFIG	TERMINAL PLATING NOTE 15
65496-141	2 X 10	B	1.45/36.83	.900/22.86	1.22/30.99	.150/3.81	1.28/32.51	ROUND	30u"/.76um GXT/GOLD FLASH
-142	2 X 13		1.75/44.45	1.200/30.48	1.52/38.61		1.58/40.13		
-143	2 X 17		2.15/54.61	1.600/40.64	1.92/48.77		1.98/50.29		
-144	2 X 25		2.95/74.93	2.400/60.96	2.72/69.09		2.78/70.61		
-145	2 X 30		3.45/87.63	2.900/73.66	3.22/81.79	.150/3.81	3.28/83.31		
-146	2 X 7		1.15/29.21	.600/15.24	.92/23.37	.105/2.67	.98/24.89		
-147	2 X 8		1.25/31.75	.700/17.78	1.02/25.91		1.08/27.43		
-148	2 X 13		1.75/44.45	1.200/30.48	1.52/38.61		1.58/40.13		
-149	2 X 17		2.15/54.61	1.600/40.64	1.92/48.77		1.98/50.29		
-150	2 X 20		2.45/62.23	1.900/48.26	2.22/56.39		2.28/57.91		
-151	2 X 25		2.95/74.93	2.400/60.96	2.72/69.09		2.78/70.61		
-152	2 X 30		3.45/87.63	2.900/73.66	3.22/81.79		3.28/83.31	ROUND	30u"/.76um GXT/GOLD FLASH
-153	2 X 13		1.75/44.45	1.200/30.48	1.52/38.61		1.58/40.13	SQ	30u"/.76um Au- 50u"/1.27um Ni
-154	2 X 25	B	2.95/74.93	2.400/60.96	2.72/69.09		2.78/70.61	SQ	30u"/.76um Au- 50u"/1.27um Ni
-155	2 X 25	C	2.95/74.93	2.400/60.96	2.72/69.09		2.78/70.61	ROUND	30u"/.76um Au- 50u"/1.27um Ni
-156	2 X 25	D	2.95/74.93	2.400/60.96	2.72/69.09	.105/2.67	2.78/70.61	ROUND	30u"/.76um Au- 50u"/1.27um Ni
65496-157	2 X 25	B	2.95/74.93	2.400/60.96	2.72/69.09	.105/2.67	2.78/70.61	ROUND	30u"/.76um Au- 50u"/1.27um Ni

NOTE 11

mat'l. code				tolerances unless otherwise specified				CUSTOMER COPY		FCI www.fciconnect.com	
ltr	ecn no	dr	date	linear	.xx ±.01/.X±.3			projection	title		
AA					.xxx ±.005/.xx±.13				HEADER,QUICKIE		
					.xxxx ±.0020/.xxx±.051				SLIM LINE,RIGHT ANGLE		
				angles	0° ±2°			INCH/MM scale 5:1	product family		code
				dr	P.JAYADEEP	09/21/04	QKE.HDR.		213		
				enr	H.SUNDY	09/21/04	size		dwg no		
				chr	H.SUNDY	09/21/04	A		65496		
				appd	H.SUNDY	09/21/04			sheet		7 of 7
sheet index	revision sheet										

ACAD

PDM: Rev:AA

STATUS: Released
cage code: 26
Printed: Apr 12, 2011

X-ON Electronics

Largest Supplier of Electrical and Electronic Components

Click to view similar products for [Headers & Wire Housings](#) category:

Click to view products by [Amphenol](#) manufacturer:

Other Similar products are found below :

[95000-104TRLF](#) [10135584-644402LF](#) [DF62W-EP2022PCA](#) [95000-106TRLF](#) [DF62W-2022SCA](#) [DF62W-EP2022PC](#) [2203348](#) [DF62W-2022SC](#) [1084018](#) [1029039](#) [1084017](#) [802-10-012-10-002000](#) [1112640](#) [1112639](#) [000-34000](#) [0008550134](#) [0009482033](#) [0009507031](#) [57102-F02-18ULF](#) [57102-S06-03LF](#) [57202-S52-04LF](#) [PCN6-15S-2.5E](#) [0039019024](#) [58102-G61-06LF](#) [582553-1](#) [0009485154](#) [0009508121](#) [009176003701906](#) [0022285053](#) [0050291907](#) [018731A](#) [LY20-4P-DT1-P1E-BR](#) [02.125.8002.8](#) [60101931](#) [60598-1 \(Cut Strip\)](#) [M1625-3R/100](#) [61062-3](#) [61082-181009](#) [CSU011177004](#) [636-1427](#) [638009-1](#) [641938-9](#) [641991-4](#) [644168-1](#) [644827-2](#) [647662-1](#) [65039-019ELF](#) [65692-001LF](#) [65781-018](#) [65781-047](#)