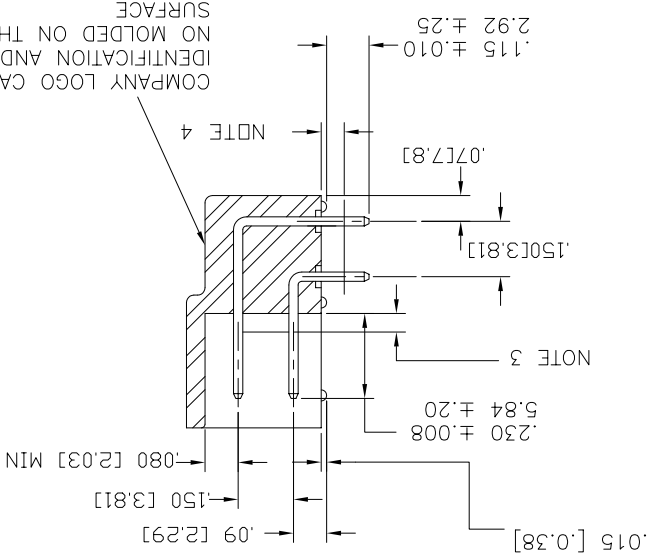
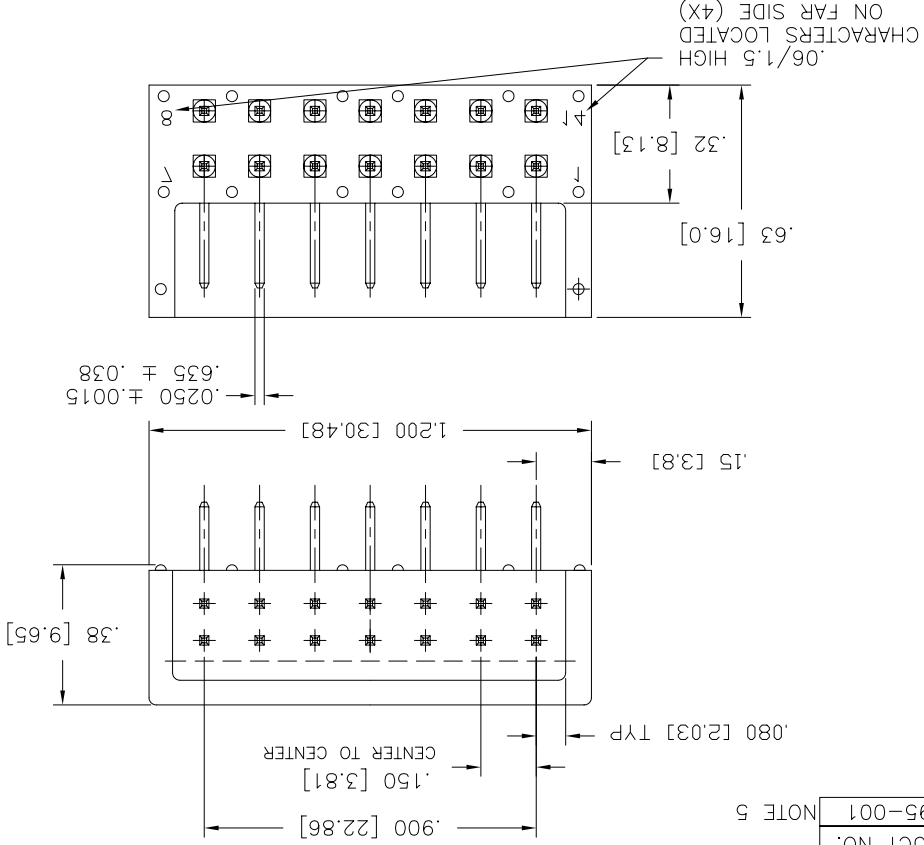


PRODUCT NO. 65695-001
NOTE 5



- NOTES:
- MOLDING MAT'L: GLASS FILLED POLYESTER FLAME RETARDANT PER UL-94-V-0
 - TERMINAL MATERIAL: .025 [0.64] SQUARE 3/4 HARD COLOR - BLACK
 - PLATING: PHOSPHER BRONZE
 - OPTIONAL PLATING ON SWAGEL TIPS: .000150/.00038 THICK Sn
 - MAX FLASH PERMISSIBLE AROUND TERMINAL: .05/.76
 - ADD "LF" SUFFIX AT THE END OF PART NUMBER FOR LEAD FREE OPTION.
 - IF "LF" P/N/THIS PRODUCT MEETS EUROPEAN UNION DIRECTIVES AND OTHER COUNTRY REGULATION AS DESCRIBED IN GS-22-008.
 - HOUSING WILL WITHSTAND EXPOSURE TO 260°C PEAK TEMPERATURE FOR 15 SECONDS IN A WAVE SOLDER APPLICATION WITH A 1.5mm MINIMUM THICK CIRCUIT BOARD. SEE APPLICATION NOTES/PROCEDURES IF THEY ARE AVAILABLE.
 - THIS PRODUCT HAS 100% TIN PLATING IN THE INTERFACE AND HAS NOT BEEN TESTED FOR WISKER GROWTH IN ALL INTERCONNECT ENVIRONMENTS.

mat'l. code		date		ecn no		itr	
NOTE 2		4/15/03		G/P		V03-0413	
surface tolerance		angles		D		M05-0167	
ISO 1302		/2/23/05		ERE		2/19/07	
ISO 406		lineart		AGS		M07-0116	
ISO 1101		.XX±.01/.3		0±.2		2/19/07	
tolerance unless otherwise specified		xxxx#.005/.13		xxxx#.0020/.051		2/14/97	
projection		INCH/MM		scale 1:1		2/14/97	
product family		2X7 RIGHT ANGLE HEADER		title		dwg no 65695	
product family		product family		type		sheet 1 of 1 size A3	
product family		product family		revision		sheet 1	
product family		product family		revision		sheet 1	
product family		product family		revision		sheet 1	

X-ON Electronics

Largest Supplier of Electrical and Electronic Components

Click to view similar products for [Headers & Wire Housings](#) category:

Click to view products by [Amphenol](#) manufacturer:

Other Similar products are found below :

[95000-104TRLF](#) [10135584-644402LF](#) [DF62W-EP2022PCA](#) [95000-106TRLF](#) [DF62W-2022SCA](#) [DF62W-EP2022PC](#) [2203348](#) [DF62W-2022SC](#) [1084018](#) [1029039](#) [1084017](#) [802-10-012-10-002000](#) [1112640](#) [1112639](#) [891-007-9SS-BST1T](#) [000-34000](#) [0008550134](#) [0009482033](#) [0009507031](#) [57102-F02-18ULF](#) [57102-S06-03LF](#) [57202-S52-04LF](#) [PCN6-15S-2.5E](#) [0039019024](#) [58102-G61-06LF](#) [582553-1](#) [0009485154](#) [0009508121](#) [0022285053](#) [0050291907](#) [018731A](#) [LY20-4P-DT1-P1E-BR](#) [02.125.8002.8](#) [60101931](#) [60598-1 \(Cut Strip\)](#) [M1625-3R/100](#) [61062-3](#) [61082-181009](#) [CSU011177004](#) [636-1427](#) [638009-1](#) [641938-9](#) [641991-4](#) [644168-1](#) [644827-2](#) [647662-1](#) [65039-019ELF](#) [65692-001LF](#) [65781-018](#) [65781-047](#)