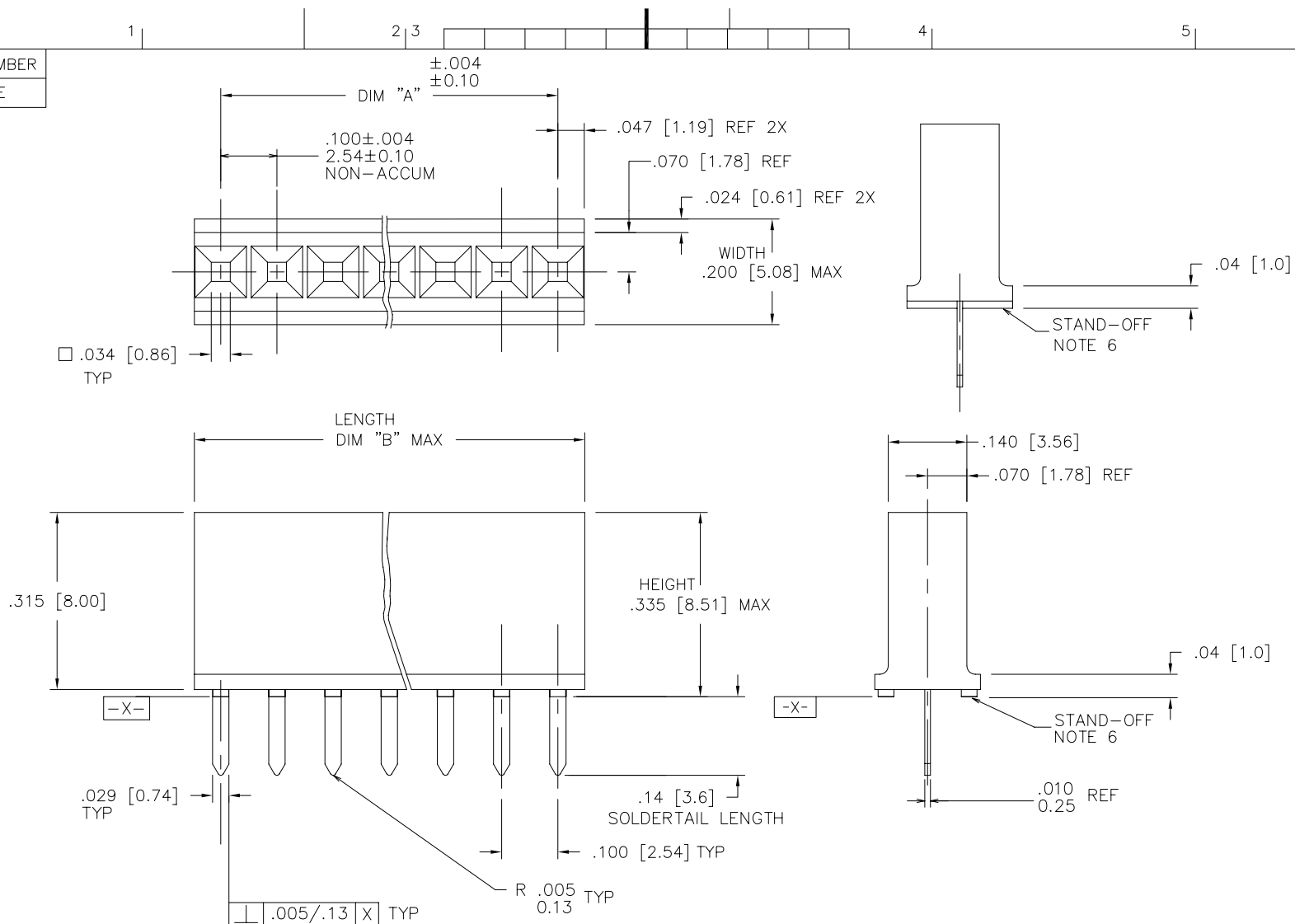




FCIconnect.com

Copyright FCI

PRODUCT NUMBER  
SEE TABLE

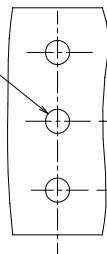


mat'l. code SEE NOTE 1 & 2		surface ISO 1302 <input checked="" type="checkbox"/>		tolerance ISO 406 ISO 1101		projection 		product family CARD CONN	
ltr	ecn	no	dr	date	tolerances unless otherwise specified		INCH/MM scale 4:1	title	
N	V70080	MDF	2/27/97	angles	.XX±.01/.X±.3			VERT. CARD CONNECTOR	
P	V94332	DAI	11/16/99	linear	.XXX±.0.005/.XX±.13			.100/2.54 CTR. SINGLE ROW	
R	V94468	MDF	12/27/99	0°±2'	.XXXX±.0020/.XXX±.051			dwg no 65780	
S	V00802	MDF	4/18/00	dr	R. SEIPLE	8/11/98	sheet 1 of 6 size A3		
T	M05-0229	ERE	5/07/05	enrg	M.HAHN	8/11/98	type Product Customer Drawing		
U	M06-0210	MHT	5/03/06	chr	M.HAHN	8/11/98			
V	M07-0143	ERE	03/03/07	appd	M.HAHN	8/11/98			
sheet index	revision	V	V	V	V	V	V		
	sheet	1	2	3	4	5	6		

form: A3

PRODUCT NUMBER  
SEE TABLE

$\varnothing .035 \pm .003$   
 $0.89 \pm .08$   
TYP



.100  
2.54  
NON-ACCUM.  
TYP

RECOMMENDED P. C. B.  
SCALE 4:1

NOTES.

1. HOUSING MATERIAL: FILLED POLYESTER,  
FLAME RETARDANT PER UL 94V-0.  
COLOR: BLACK.
2. TERMINAL MATERIAL AND PLATING: SEE TABULATION
3. RECOMMENDED PIN SIZE  $.25 \pm .001 / 0.65 \pm 0.03$ .
4. RECOMMENDED PIN LENGTH:  $.210 \pm .020 / 5.33 \pm 0.51$ .
5. MARK FCI PART NUMBER AND DATE CODE LEGIBLE ON TUBE LABEL.
6. STAND-OFF CONFIGURATION BUMP OR RIB AT MANUFACTURERS OPTION.
7. SOLDER TAIL IS POST PLATED GOLD.  
THE "V" SHAPED TIP OF SOLDER TAIL ALLOWED BARE EDGES DUE TO CUT-OFF
8. ADD "LF" SUFFIX AT THE END OF PART NUMBER FOR LEAD FREE OPTION.
9. THIS PRODUCT MEETS EUROPEAN UNION DIRECTIVES AND OTHER  
COUNTRY REGULATION AS DESCRIBED IN GS-22-008.
10. THE HOUSING WILL WITHSTAND EXPOSURE TO 260°C PEAK TEMPERATURE  
FOR 15 SECONDS IN A WAVE SOLDER APPLICATION WITH A 1.5mm  
MINIMUM THICK CIRCUIT BOARD. SEE APPLICATION NOTES/PROCEDURES  
IF THEY ARE AVAILABLE.
11. "THIS PRODUCT HAS 100% TIN PLATING IN THE INTERFACE AND  
HAS NOT BEEN TESTED FOR WHISKER GROWTH IN ALL INTERCONNECT  
ENVIRONMENTS."



FCIconnect.com

Copyright FCI

mat'l. code		surface ISO 1302 <input checked="" type="checkbox"/>		tolerance ISO 406 ISO 1101		projection 		product family CARD CONN	
ltr		ecn no		dr		date		title	
v								VERT. CARD CONNECTOR	
								.100/2.54 CTR. SINGLE ROW	
								scale 4:1	
								dwg no	
								sheet 2 of 6 size	
								65780 A3	
								type Product Customer Drawing	
sheet index		revision sheet							

PRODUCT NO	SIZE	DIM A	DIM B	MATERIAL AND PLATING	LEAD FREE OPTION		
65780-001				UNASSIGNED			
-002	1 X 2	.100/2.54	.200/5.08				
-003	1 X 3	.200/5.08	.300/7.62	BODY MATERIAL: BRASS BODY PLATING: 40u"/1.02u MIN THICKNESS C. I. GOLD INSIDE CONTACT AREA. 10u"/.25u MIN GOLD ON REST OF TERMINAL BODY OVER 50u"/1.27u MIN NICKEL. SPRING MAT'L: BeCu HEAT TREATED SPRING PLATING: GOLD FLASH	NOTE 8, 9 OBS		
-004	1 X 4	.300/7.62	.400/10.16				
-005	1 X 5	.400/10.16	.500/12.70				
-006	1 X 6	.500/12.70	.600/15.24				
-007	1 X 7	.600/15.24	.700/17.78				
-008	1 X 8	.700/17.78	.800/20.32				
-009	1 X 9	.800/20.32	.900/22.86				
-010	1 X 10	.900/22.86	1.000/25.40				
-011	1 X 11	1.000/25.40	1.100/27.94				
-012	1 X 12	1.100/27.94	1.200/30.48				
-013	1 X 13	1.200/30.48	1.300/33.02				
-014	1 X 14	1.300/33.02	1.400/35.56				
-015	1 X 15	1.400/35.56	1.500/38.10				
-016	1 X 16	1.500/38.10	1.600/40.64				
-017	1 X 17	1.600/40.64	1.700/43.18				
-018	1 X 18	1.700/43.18	1.800/45.72				
-019	1 X 19	1.800/45.72	1.900/48.26				
-020	1 X 20	1.900/48.26	2.000/50.08				
-021	1 X 21	2.000/50.08	2.100/53.34				
-022	1 X 22	2.100/53.34	2.200/55.88				
-023	1 X 23	2.200/55.88	2.300/58.42				
-024	1 X 24	2.300/58.42	2.400/60.96				
-025	1 X 25	2.400/60.96	2.500/63.50				
-026	1 X 26	2.500/63.50	2.600/66.04				
-027	1 X 27	2.600/66.04	2.700/68.58				
-028	1 X 28	2.700/68.58	2.800/71.12				
65780-029	1 X 29	2.800/71.12	2.900/73.66				NOTE 8, 9



FCJconnect.com

Copyright FCJ

mat'l. code		surface ISO 1302 <input checked="" type="checkbox"/>		tolerance ISO 406 ISO 1101		projection 		product family CARD CONN	
ltr	ecn	no	dr	date	tolerances unless otherwise specified		title		
V					angles	linear	INCH/MM		VERT. CARD CONNECTOR
					0°±2'	.XX±.01/.X±.3 .XXX±.0.005/.XX±.13 XXXX±.0020/.XXX±.051	scale 4:1		.100/2.54 CTR. SINGLE ROWY
					dr	R. SEIPLE	8/11/98	dwg no	
					enr	M.HAHN	8/11/98	sheet 3 of 6 size	
					chr	M.HAHN	8/11/98	65780 A3	
					appd	M.HAHN	8/11/98	type Product Customer Drawing	
sheet index	revision sheet								



PRODUCT NO	SIZE	DIM A	DIM B	MATERIAL AND PLATING	LEAD FREE OPTION
65780-030	1 X 30	2.900/73.66	3.000/76.20	UNASSIGNED	
-031	1 X 31	3.000/76.20	3.100/78.74	BODY MATERIAL: BRASS BODY PLATING: 40u"/1.02u MIN THICKNESS C. I. GOLD INSIDE CONTACT AREA. 10u"/.25u MIN GOLD ON REST OF TERMINAL BODY OVER 50u"/1.27u MIN NICKEL. SPRING MAT'L: BeCu HEAT TREATED SPRING PLATING: GOLD FLASH	NOTE 8, 9 ↑ ↓ NOTE 8, 9
-032	1 X 32	3.100/78.74	3.200/81.28		
-033	1 X 33	3.200/81.28	3.300/83.82		
-034	1 X 34	3.300/83.82	3.400/86.36		
-035	1 X 35	3.400/86.36	3.500/88.90		
-036	1 X 36	3.500/88.90	3.600/91.44		
-037					
A -038	1 X 2	.100/2.54	.200/5.08	BODY MATERIAL: BRASS BODY PLATING: 100u"/2.54u THICK Sn PLATE. SPRING MAT'L: BeCu HEAT TREATED SPRING PLATING: 30u"/.76u MIN ELECTROLESS TIN.	NOTE 8, 9 & 11 ↑ ↓ NOTE 8, 9 & 11
-039	1 X 3	.200/5.08	.300/7.62		
-040	1 X 4	.300/7.62	.400/10.16		
-041	1 X 5	.400/10.16	.500/12.70		
-042	1 X 6	.500/12.70	.600/15.24		
-043	1 X 7	.600/15.24	.700/17.78		
-044	1 X 8	.700/17.78	.800/20.32		
-045	1 X 9	.800/20.32	.900/22.86		
-046	1 X 10	.900/22.86	1.000/25.40		
-047	1 X 11	1.000/25.40	1.100/27.94		
-048	1 X 12	1.100/27.94	1.200/30.48		
-049	1 X 13	1.200/30.48	1.300/33.02		
-050	1 X 14	1.300/33.02	1.400/35.56		
-051	1 X 15	1.400/35.56	1.500/38.10		
-052	1 X 16	1.500/38.10	1.600/40.64		
-053	1 X 17	1.600/40.64	1.700/43.18		
-054	1 X 18	1.700/43.18	1.800/45.72		
-055	1 X 19	1.800/45.72	1.900/48.26		
-056	1 X 20	1.900/48.26	2.000/50.80		
-057	1 X 21	2.000/50.80	2.100/53.34		
65780-058	1 X 22	2.100/53.34	2.200/55.88		



Copyright FCI

mat'l. code		surface ISO 1302 ✓		tolerance ISO 406 ISO 1101		projection ⊕		product family CARD CONN	
ltr	ecn no	dr	date	tolerances unless otherwise specified		INCH/MM		title	
V				angles	linear	.XX±.01/.X±.3 .XXX±.0.005/.XX±.13 XXXX±.0020/.XXX±.051		VERT. CARD CONNECTOR .100/2.54 CTR. SINGLE ROWY	
				0'±2'		scale 4:1		dwg no 65780	
				dr	R. SEIPLE	8/11/98		sheet 4 of 6 size A3	
				enr	M.HAHN	8/11/98		type Product Customer Drawing	
				chr	M.HAHN	8/11/98			
				appd	M.HAHN	8/11/98			
sheet index	revision sheet								

PRODUCT NO	SIZE	DIM A	DIM B	MATERIAL AND PLATING	LEAD FREE OPTION
65780-059	1 X 23	2.200/55.88	2.300/58.42	UNASSIGNED	
-060	1 X 24	2.300/58.42	2.400/60.96	BODY MATERIAL: BRASS BODY PLATING: 100u"/2.54u THICK Sn PLATE. SPRING MAT'L: BeCu HEAT TREATED SPRING PLATING: 30u"/.76u MIN ELECTROLESS TIN.	NOTE 8, 9 & 11 ↓ NOTE 8, 9 & 11
-061	1 X 25	2.400/60.96	2.500/63.50		
-062	1 X 26	2.500/63.50	2.600/66.04		
-063	1 X 27	2.600/66.04	2.700/68.58		
-064	1 X 28	2.700/68.58	2.800/71.12		
-065	1 X 29	2.800/71.12	2.900/73.66		
-066	1 X 30	2.900/73.66	3.000/76.20		
-067	1 X 31	3.000/76.20	3.100/78.74		
-068	1 X 32	3.100/78.74	3.200/81.28		
-069	1 X 33	3.200/81.28	3.300/83.82		
-070	1 X 34	3.300/83.82	3.400/86.36		
-071	1 X 35	3.400/86.36	3.500/88.90		
-072	1 X 36	3.500/88.90	3.600/91.44		
-073				UNASSIGNED	
-074	1 X 2	.100/2.54	.200/5.08		
-075	1 X 3	.200/5.08	.300/7.62	BODY MATERIAL: Cu BODY PLATING: 10u"/.25u Au FLASH INSIDE CONTACT AREA ONLY, WITH .001/.03 MIN HIGH Au DOT. SPRING MAT'L: BeCu HEAT TREATED SPRING PLATING: GOLD FLASH	NOTE 8, 9 ↓ NOTE 8, 9
-076	1 X 4	.300/7.62	.400/10.16		
-077	1 X 5	.400/10.16	.500/12.70		
-078	1 X 6	.500/12.70	.600/15.24		
-079	1 X 7	.600/15.24	.700/17.78		
-080	1 X 8	.700/17.78	.800/20.32		
-081	1 X 9	.800/20.32	.900/22.86		
-082	1 X 10	.900/22.86	1.000/25.40		
-083	1 X 11	1.000/25.40	1.100/27.94		
-084	1 X 12	1.100/27.94	1.200/30.48		
-085	1 X 13	1.200/30.48	1.300/33.02		
-086	1 X 14	1.300/33.02	1.400/35.56		
65780-087	1 X 15	1.400/35.56	1.500/38.10		



FCIconnect.com

Copyright FCI

mat'l. code		surface ISO 1302 ✓		tolerance ISO 406 ISO 1101		projection 		product family CARD CONN	
ltr	ecn	no	dr	date		tolerances unless otherwise specified		title	
V						.XX±.01/.X±.3 .XXX±.0.005/.XX±.13 .XXXX±.0020/.XXX±.051		INCH/MM scale 4:1	
						angles 0°±2'		VERT. CARD CONNECTOR .100/2.54 CTR. SINGLE ROW	
						dr R. SEIPLE 8/11/98 engr M. HAHN 8/11/98 chr M. HAHN 8/11/98 appd M. HAHN 8/11/98		dwg no 65780 sheet 5 of 6 size A3	
sheet index		revision sheet						type Product Customer Drawing	





## X-ON Electronics

Largest Supplier of Electrical and Electronic Components

*Click to view similar products for [Headers & Wire Housings](#) category:*

*Click to view products by [Amphenol](#) manufacturer:*

Other Similar products are found below :

[892-18-020-10-001101](#) [58102-G61-06LF](#) [582553-1](#) [0009485154](#) [009176003701906](#) [0050291907](#) [LY20-4P-DT1-P1E-BR](#) [02.125.8002.8](#)  
[609-3404](#) [61062-3](#) [622-0430](#) [622-3653LF](#) [63453-116](#) [636-1030](#) [636-1427](#) [636-3427](#) [636-4007](#) [641938-9](#) [641991-4](#) [644827-2](#) [65817-010LF](#)  
[65817-015LF](#) [65863-015LF](#) [66207-023LF](#) [67095-007LF](#) [67601157](#) [68648-049](#) [70.362.1628.0](#) [70-4210](#) [70-4226B](#) [70-4853B](#) [707-5020](#) [707-](#)  
[5028](#) [71.350.2428.0](#) [71918-208LF](#) [71961-016LF](#) [733-134](#) [733-162](#) [754199-000](#) [760-3052](#) [787-8014-00](#) [79531-3000](#) [FCN-360C032-B](#) [FCN-](#)  
[367T-T012/H](#) [FCN-723D010/2](#) [80.063.4001.1](#) [800-90-001-10-001000](#) [800-90-010-10-002000](#) [801-43-002-10-013000](#) [801-43-006-10-002000](#)