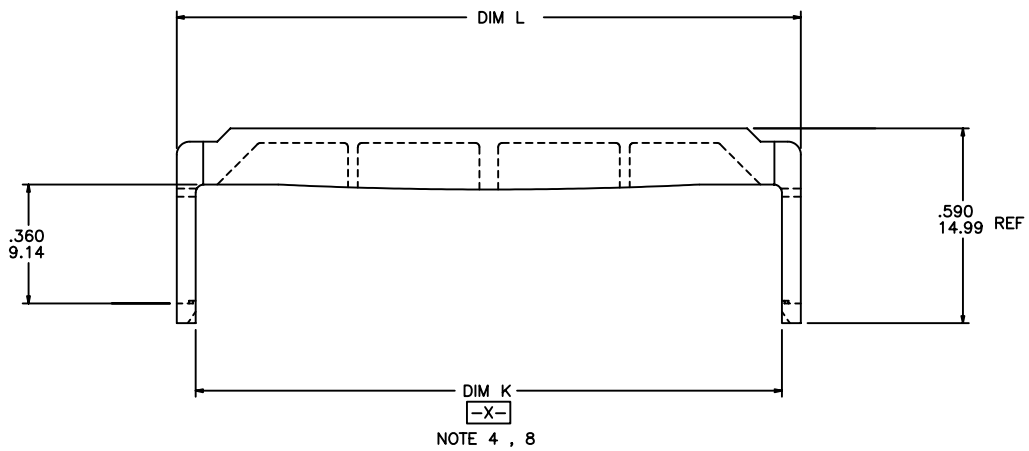
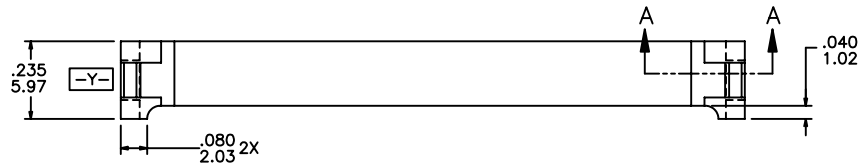
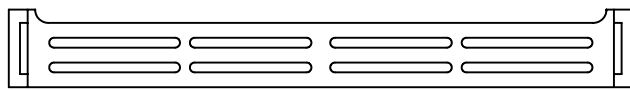
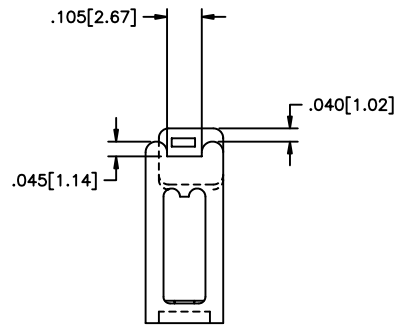


PRODUCT NUMBER

SEE TABLE



NOTE 4, 8



- NOTE:
- 1 ADD "LF" SUFFIX AT THE END OF PART NUMBER FOR LEAD FREE OPTION.
 - 2 IF "LF" P/N THE PRODUCT MEETS EUROPEAN UNION DIRECTIVES AND OTHER COUNTRY REGULATION AS DESCRIBED IN GS-22-008.
 - 3 THE HOUSING WILL WITHSTAND EXPOSURE TO 260° PEAK TEMPERATURE FOR 15 SECONDS IN A WAVE SOLDER APPLICATION WITH A 1.5mm MINIMUM THICK CIRCUIT BOARD. SEE APPLICATION NOTES/PROCEDURES IF THEY ARE AVAILABLE.

REVISIONS				SHEET INDEX	ISSUE		B		B												
REV	ECN/DDR#	BY	DATE		SH NO.	1	2														
A	NEW	DEW	5/22/89																		
B	V71195	SAR	10/1/97																		
C	N06-0112	LONG	4/18/06																		

TOLERANCES UNLESS OTHERWISE SPECIFIED	MAT	DR	D	WHITING	DATE	CUSTOMER COPY
.00±.01 / .00±.13	-	ENGR	M	SMYK	5/22/89	
.000±.005 / .00±.13	FINISH	CHK	M	SMYK	5/22/89	
.0000±.0020 / .000±.051	PRODUCT FAMILY	APPD	M	SMYK	5/22/89	
0±	QKE	M	SMYK	5/22/89		
ANGLES						

BERG ELECTRONICS

TITLE: SPL STRAIN RELIEF QUICKIE II

SCALE: 5/11

SIZE: A

DWG. NO.: 6587311

SHEET: 1 OF 2

FORM E-3067 REV 8/93

X-ON Electronics

Largest Supplier of Electrical and Electronic Components

Click to view similar products for [Headers & Wire Housings](#) category:

Click to view products by [Amphenol](#) manufacturer:

Other Similar products are found below :

[892-18-020-10-001101](#) [58102-G61-06LF](#) [582553-1](#) [0009485154](#) [009176003701906](#) [0050291907](#) [LY20-4P-DT1-P1E-BR](#) [02.125.8002.8](#)
[609-3404](#) [61062-3](#) [622-0430](#) [622-3653LF](#) [63453-116](#) [636-1030](#) [636-1427](#) [636-3427](#) [636-4007](#) [641938-9](#) [641991-4](#) [644827-2](#) [65817-010LF](#)
[65817-015LF](#) [65863-015LF](#) [66207-023LF](#) [67095-007LF](#) [67601157](#) [68648-049](#) [70.362.1628.0](#) [70-4210](#) [70-4226B](#) [70-4853B](#) [707-5020](#) [707-](#)
[5028](#) [71.350.2428.0](#) [71918-208LF](#) [71961-016LF](#) [733-134](#) [733-162](#) [754199-000](#) [760-3052](#) [787-8014-00](#) [79531-3000](#) [FCN-360C032-B](#) [FCN-](#)
[367T-T012/H](#) [FCN-723D010/2](#) [80.063.4001.1](#) [800-90-001-10-001000](#) [800-90-010-10-002000](#) [801-43-002-10-013000](#) [801-43-006-10-002000](#)