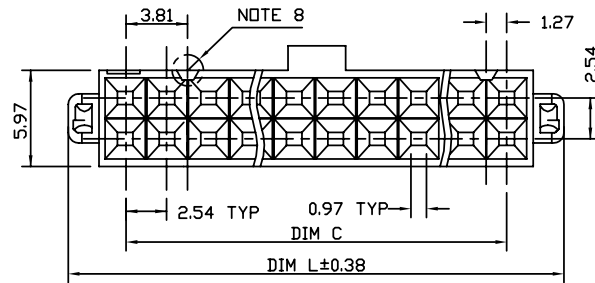
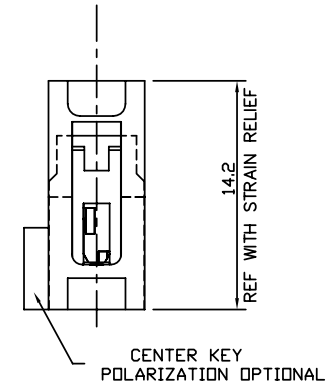
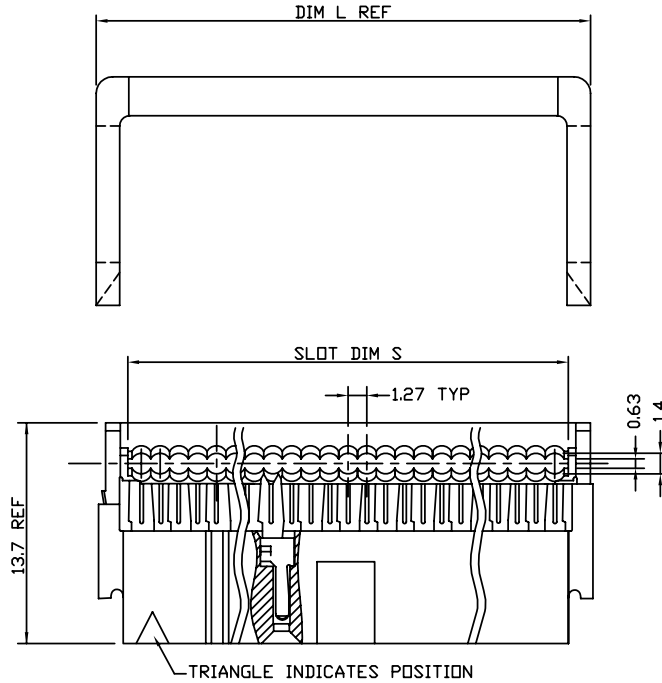




Copyright FCI.

PRODUCT NO.
SEE TABLE

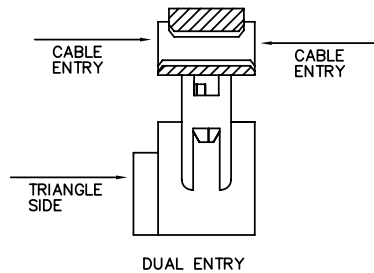
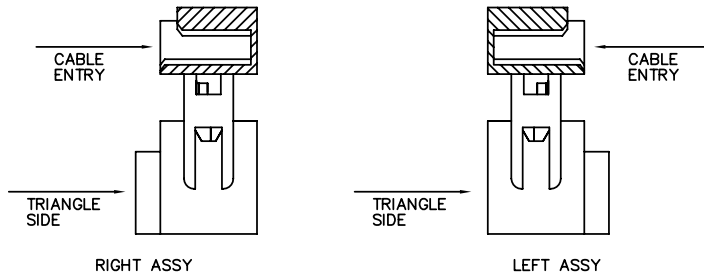


| | | | | | | | | | |
|-------------|----------------|-----|------------|---------------------------------------|------------|---------------|---------------------------|--------------|----|
| mat'l. code | | | | tolerances unless otherwise specified | | CUSTOMER COPY | FCI www.fciconnect.com | | |
| ltr | ecn no | dr | date | linear | .X ± 0.10 | projection | title | | |
| J | V22169 | MSC | 1992-05-21 | | .XX ± 0.05 | | DUAL POLARIZED | | |
| K | N05-0368 | GUL | 2005-12-27 | | .XXX ± | | QUICKIE II LOW PROFILE | | |
| L | N09-0400 | AZH | 2010-01-18 | angles | ±2 | INCH/MM | product family | | |
| | | | | dr | GuLing | | 12/27/05 | QUICKIE | |
| | | | | enr | TaoDeniel | | 12/27/05 | code | NT |
| | | | | chr | TaoDeniel | 12/27/05 | size | dwg no | |
| | | | | appd | Jason Zhou | 12/27/05 | scale | 1:1 | |
| sheet index | revision sheet | L | 1-2 | | | | A4 | 66432 | |
| | | | | | | | | sheet 1 of 2 | |

| PRODUCT NO. | SIZE | DIM L | DIM S | DIM C |
|-----------------|------|-------|-------|-------|
| 66432-X10/X10LF | 2X5 | 17.27 | 13.21 | 10.16 |
| -X14/X14LF | 2X7 | 22.35 | 18.29 | 15.24 |
| -X16/X16LF | 2X8 | 24.89 | 20.83 | 17.78 |
| -X20/X20LF | 2X10 | 29.97 | 25.91 | 22.86 |
| -X24/X24LF | 2X12 | 35.05 | 30.99 | 27.94 |
| -X26/X26LF | 2X13 | 37.59 | 33.53 | 30.48 |
| -X30/X30LF | 2X15 | 42.67 | 38.61 | 35.56 |
| -X34/X34LF | 2X17 | 47.75 | 43.69 | 40.64 |
| -X40/X40LF | 2X20 | 55.37 | 51.31 | 48.26 |
| -X44/X44LF | 2X22 | 60.45 | 56.39 | 53.34 |
| -X50/X50LF | 2X25 | 68.07 | 64.01 | 60.96 |
| 66432-X60/X60LF | 2X30 | 80.77 | 76.71 | 73.66 |

| DASH NO | COVER STYLE | COVER ORIENTATION | POLARIZATION | STRAIN RELIEF |
|---------|--------------|-------------------|------------------------|---------------|
| -0XX | THRU | DUAL ENTRY | DUAL POL. | YES |
| -1XX | THRU | DUAL ENTRY | CENTER KEY & DUAL POL. | YES |
| -2XX | BLIND | RIGHT | DUAL | YES |
| -3XX | BLIND | RIGHT | CENTER KEY & DUAL POL. | YES |
| -4XX | BLIND | LEFT | DUAL POL. | YES |
| -5XX | BLIND | LEFT | CENTER KEY & DUAL POL. | YES |
| -6XX | BLIND | RIGHT | CENTER KEY & DUAL POL. | NO |
| -7XX | BLIND | LEFT | CENTER KEY & DUAL POL. | NO |
| -8XX | DISCONTINUED | | | |
| -9XX | DISCONTINUED | | | |

COVER ORIENTATION



NOTES:

1. TERMINAL MATERIAL: FULL HARD PHOS. BRONZE ALLOY. UNS-C51000.
2. TERMINAL PLATING: 50u"/1.27um MIN Ni UNDERPLATE OVER ENTIRE TERMINAL AND 30u"/0.76um MIN Au OR GXT IN CONTACT AREA ONLY;
3. MOLDING MATERIAL: BASE & COVER--GLASS FILLED POLYESTER. FLAME RETARDANT PER UL94V-0. COLOR--BLUE.
4. CONNECTOR ASSEMBL ES PACKAGED IN TUBES.
5. THE FIRST TWO CAVITY POSITIONS AND THE LAST TWO. ARE IDENTIFIED BY NUMBER.
6. POLARIZING FEATURES ARE DESCRIBED IN TABLE.
7. MOLDING MATERIAL: STRAIN RELIEF--POLYSULFONE. FLAME RETARDANT PER UL 94V-0,COLOR--NATURAL.
8. THE POLARIZING FEATURE ON THIS END IS NON-EXISTANT ON 2X5 AND 2X7 POSITION CONNECTORS.
9. 2X5 POSITION NOT AVAILABLE WITH POLARIZATION SLOT ON CENTER KEY STYLE.
10. PRODUCT NUMBER 66432-XXX LF
LEAD FREE OPTION
11. WITH "LF" MARK, TERMINAL PLATING: 50u"/1.27um Ni UNDERPLATE OVER ENTIRE TERMINAL AND 30u"/0.76um MIN AU OR GXT IN CONTACT AREA ONLY.
12. FOR LEAD FREE P/N, THE PRODUCT MEET EUROPEAN UNION DIRECTIVES AND OTHER COUNTRY REGULATION AS DESCRIBED IN GS-22-008.
13. FOR LEAD FREE P/N, THE PLASTIC PART WILL WITHSTAND EXPOSURE TO 260°C PEAK TERMERATURE FOR 10 SECONDS IN A WAVE SOLDER APPLICATION.
14. PRODUCT SPEC. BUS-12-082
15. PLATING OPTIONS: MAY BE EITHER GOLD OR GXT PLATED AT MANUFACTURER'S OPTION.

| | | | |
|---------------------------------------|---------------------|---------------|------------------------|
| tolerances unless otherwise specified | | CUSTOMER COPY | www.fciconnect.com |
| linear | .X ± 0.1 | projection | |
| | .XX ± 0.05 | | DUAL POLARIZED |
| angles | .XXX ± | | QUICKIE II LOW PROFILE |
| | ±2 | INCH/MM | product family |
| dr | GuLing 12/27/05 | | QUICKIE |
| engr | TaoDeniel 12/27/05 | | code |
| chr | TaoDeniel 12/27/05 | scale | NT |
| appd | Jason Zhou 12/27/05 | 1:1 | sheet |
| | | A4 | 2 of 2 |
| | | 66432 | |



Copyright FCI.

X-ON Electronics

Largest Supplier of Electrical and Electronic Components

Click to view similar products for [Headers & Wire Housings](#) category:

Click to view products by [Amphenol](#) manufacturer:

Other Similar products are found below :

[95000-104TRLF](#) [10135584-644402LF](#) [DF62W-EP2022PCA](#) [95000-106TRLF](#) [DF62W-2022SCA](#) [DF62W-EP2022PC](#) [2203348](#) [DF62W-2022SC](#) [1084018](#) [1029039](#) [1084017](#) [802-10-012-10-002000](#) [1112640](#) [1112639](#) [000-34000](#) [0009482033](#) [0009507031](#) [57102-S06-03LF](#) [57202-S52-04LF](#) [PCN6-15S-2.5E](#) [0039019024](#) [58102-G61-06LF](#) [582553-1](#) [0009508121](#) [0050291907](#) [018731A](#) [LY20-4P-DT1-P1E-BR](#) [02.125.8002.8](#) [60101931](#) [60598-1 \(Cut Strip\)](#) [M1625-3R/100](#) [61062-3](#) [61082-181009](#) [636-1427](#) [638009-1](#) [641938-9](#) [641991-4](#) [644168-1](#) [647662-1](#) [65039-019ELF](#) [65817-002LF](#) [65817-015LF](#) [65863-015LF](#) [66207-023LF](#) [67016-026LF](#) [67046-001LF](#) [67095-007LF](#) [68002-116](#) [68016-236H](#) [68648-049](#)