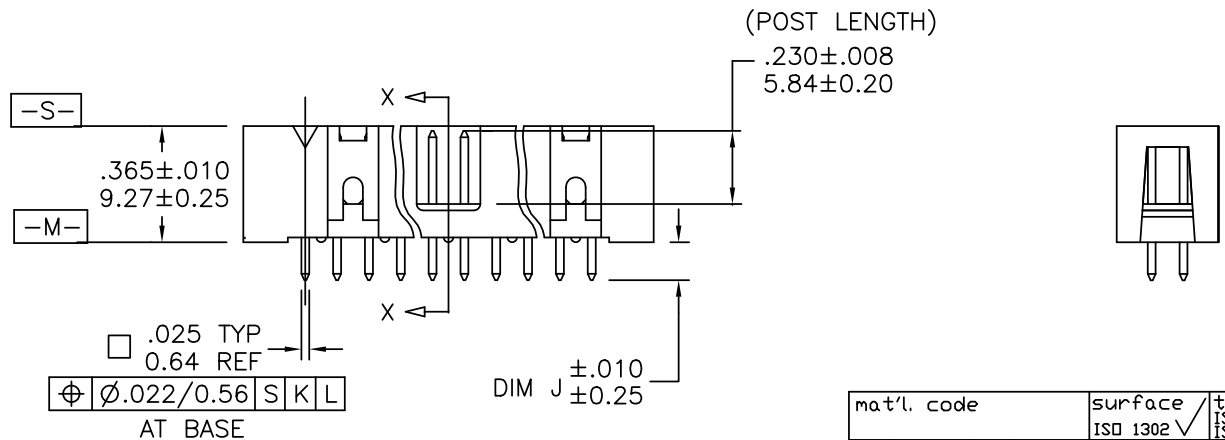
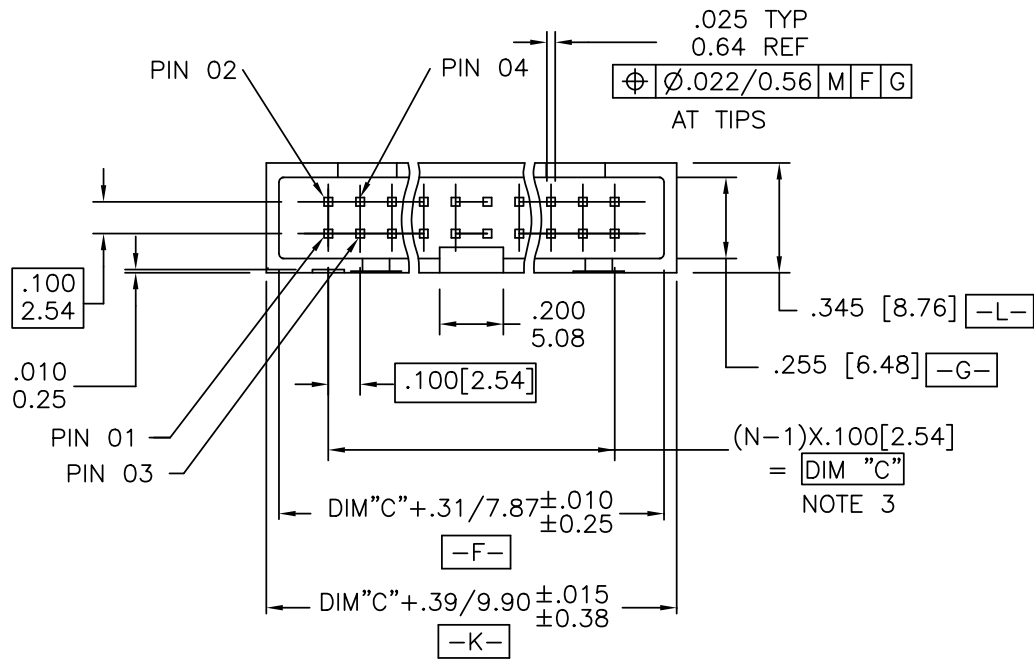


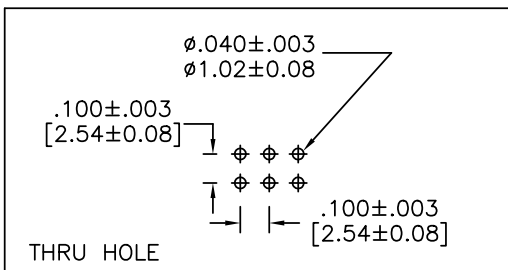
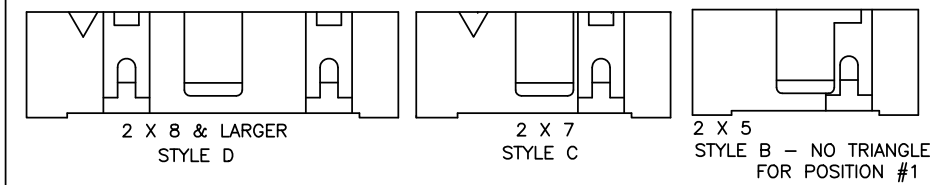
PRODUCT NUMBER
SEE TABLE



mat'l. code		surface ISO 1302 ✓		tolerance ISO 406 ISO 1101		projection ISO 1101		product family QUICKIE	
ltr	ecnr	ndr	date	tolerances unless otherwise specified		INCH/MM		title	
AD	V42013	LSS	1/25/95	angles	linear	scale 1:1		HEADER QUICKIE SLIM LINE VERTICAL 4 WALL	
AE	V50332	MRC	5/25/95	±2'				dwg no 66506 sheet of 10 size A3	
AF	N05-0060	ERE	8/08/05					type Product Customer Drawing	
AG	M06-0282	AGS	7/22/06	dr	L. SANDERS	1/25/95			
AH	M07-0363	MHT	8/17/07	engr	M. SMYK	1/25/95			
AJ	N08-0138	R.B	07/08/08	chr	J. ROMBERGER	1/25/95			
AK	ax-n-012093	J.Z	2012-07-04	appd	M. SMYK	1/25/95			
sheet	revisio	AK	AK	AK	AK	AK	AK	AK	AK
index	sheet	1	2	3	4	5	6	7	8

PRODUCT NUMBER
SEE TABLE

HEADER STYLE



RECOMMENDED BOARD LAYOUT

NOTES:

1. SAME POSITION TOLERANCE APPLIES TO BOTH ENDS OF PINS.
2. MOLDING MATERIAL: GLASS-FILLED POLYESTER, FLAME RETARDANT PER UL 94 V-0, COLOR: BLACK.
3. 1° MAX. DRAFT PERMISSIBLE ON ALL SURFACES.
4. 3 LBS./1.36 KG MIN. TERMINAL PULL-OUT FORCE.
5. TERMINAL MATERIAL: PHOSPHORUS BRONZE.
6. TO DETERMINE DIMENSIONS:
N = NUMBER OF POSITIONS PER ROW
7. UNDER PLATING: 50µ"/1.27µm Ni.
8. PART NUMBERS WITH "R" FOLLOWING THE PART NUMBER (EXAMPLE 66506-326 R) HAS RETENTION. (ONLY PARTS WITH .105, .120, AND .150 ROUND OR SQUARE TAILS CAN HAVE RETENTION.) LOCATION IS MANUFACTURERS OPTION.
FOR CONNECTORS:
RETENTIVE LEG APPLICABLE TO TAIL LENGTHS .125/3.18 MAX. 5LB/2.3KG MAX INSERTION FORCE AND .25LB./1KG MIN RETENTION FORCE PER RETENTIVE PIN USING .062/1.57 THICK CIRCUIT BOARD AND RECOMMENDED HOLE PATTERN. RETENTIVE LOCATION AT THE DISCRETION OF THE MANUFACTURER. RETENTION PIN MAY BE SHIFTED TO NEXT POSITION.
9. PART NUMBERS WITH "T" FOLLOWING PART NUMBER (EXAMPLE 66506-068 T IS PACKED IN TUBES.) (CALL PRODUCT MANAGER FOR AVAILABILITY.)
10. SEE 68751 FOR LATCHES.
11. MAY BE ORDERED WITH "G" PACK PACKAGING BY ADDING "G" TO DASH NUMBER.
12. ADD "LF" SUFFIX AT THE END OF PART NUMBER FOR LEAD FREE OPTION & PART NUMBERS WITH "LF" SUFFIX ADDED IN THE TABLE ARE LEAD FREE.
13. IF "LF" P/N THE PRODUCT MEETS EUROPEAN UNION DIRECTIVES AND OTHER COUNTRY REGULATION AS DESCRIBED IN GS-22-008.
14. THE HOUSING WILL WITHSTAND EXPOSURE TO 260°C PEAK TEMPERATURE FOR 15 SECONDS IN A WAVE SOLDER APPLICATION WITH A 1.57mm MINIMUM THICK CIRCUIT BOARD. SEE APPLICATION NOTES/PROCEDURES IF THEY ARE AVAILABLE.
15. "THIS PRODUCT HAS 100% TIN PLATING IN THE INTERFACE AND HAS NOT BEEN TESTED FOR WHISKER GROWTH IN ALL INTERCONNECT ENVIRONMENTS."
16. PLATING OPTIONS:
PERFORMANCE PLATING WILL BE EITHER GOLD OR GXT ON CONTACT OR TAIL, OPTIONALLY TIN ON TAIL.

mat'l. code		surface	tolerance	projection	product family	
		ISD 1302 ✓	ISD 406 ISD 1101		QUICKIE	
ltr	ecn	no	date	tolerances unless otherwise specified		title
AK				angles	linear	INCH/MM
				±2'	.XXX±.01/.XXX±.03 .XXX±.005/.XXX±.013 .XXX±.0020/.XXX±.0051	HEADER QUICKIE SLIM LINE VERTICAL 4 WALL
				dr	L. SANDERS	1/25/95
				engr	M. SMYK	1/25/95
				chr	J. ROMBERGER	1/25/95
				appd	M. SMYK	1/25/95
sheet	revision					dwg no
index	sheet					66506
				scale 1:1	shee 2 of 10	size
						A3
				type Product Customer Drawing		

PRODUCT NUMBER NOTE 8, 9 & 12	SIZE	STYLE	DIM C	DIM J	PIN PLATING	PLASTIC MATERIAL
66506-001	2 X 5	B	.400/10.16	.105/2.67	30u"/0.76u MIN (NOTE 16) OVER 50u"/1.27u Ni	NOTE 2
-002				.150/3.81	30u"/0.76u MIN (NOTE 16) OVER 50u"/1.27u Ni	
-003				.675/17.15	30u"/0.76u MIN (NOTE 16) OVER 50u"/1.27u Ni	
-004				.105/2.67	120/200u" TIN LEAD	
-004LF				.105/2.67	100/160u" TIN	
-005				.150/3.81	120/200u" TIN LEAD	
-005LF				.150/3.81	100/160u" TIN	
-006				.675/17.15	120/200u" TIN LEAD	
-006LF	2 X 5	B	.400/10.16	.675/17.15	100/160u" TIN	
-007	2 X 10	D	.900/22.86	.105/2.67	30u"/0.76u MIN (NOTE 16) OVER 50u"/1.27u Ni	
-008				.150/3.81	30u"/0.76u MIN (NOTE 16) OVER 50u"/1.27u Ni	
-009				.675/17.15	30u"/0.76u MIN (NOTE 16) OVER 50u"/1.27u Ni	
-010				.105/2.67	120/200u" TIN LEAD	
-010LF				.105/2.67	100/160u" TIN	
-011				.150/3.81	120/200u" TIN LEAD	
-011LF				.150/3.81	100/160u" TIN	
-012				.675/17.15	120/200u" TIN LEAD	
-012LF	2 X 10		.900/22.86	.675/17.15	100/160u" TIN	
-013	2 X 13		1.200/30.48	.105/2.67	30u"/0.76u MIN (NOTE 16) OVER 50u"/1.27u Ni	
-014				.150/3.81	30u"/0.76u MIN (NOTE 16) OVER 50u"/1.27u Ni	
-015				.675/17.15	30u"/0.76u MIN (NOTE 16) OVER 50u"/1.27u Ni	
-016				.105/2.67	120/200u" TIN LEAD	
-016LF				.105/2.67	100/160u" TIN	
-017				.150/3.81	120/200u" TIN LEAD	
-017LF				.150/3.81	100/160u" TIN	
-018				.675/17.15	120/200u" TIN LEAD	
-018LF	2 X 13		1.200/30.48	.675/17.15	100/160u" TIN	
-019	2 X 17		1.600/40.64	.105/2.67	30u"/0.76u MIN (NOTE 16) OVER 50u"/1.27u Ni	
-020				.150/3.81	30u"/0.76u MIN (NOTE 16) OVER 50u"/1.27u Ni	
-021				.675/17.15	30u"/0.76u MIN (NOTE 16) OVER 50u"/1.27u Ni	
-022				.105/2.67	120/200u" TIN LEAD	
-022LF				.105/2.67	100/160u" TIN	
-023				.150/3.81	120/200u" TIN LEAD	
-023LF				.150/3.81	100/160u" TIN	
-024				.675/17.15	120/200u" TIN LEAD	
66506 -024LF	2 X 17	D	1.600/40.64	.675/17.15	100/160u" TIN	NOTE 2

mat'l. code	surface ISO 1302 ✓	tolerance ISO 406 ISO 1101	projection 	product family QUICKIE
ltr ecn nopr date	tolerances unless otherwise specified	angles linear ±2'	INCH/MM scale 1:1	title HEADER QUICKIE SLIM LINE VERTICAL 4 WALL
AK				dwg no 66506 sheet 5 of 10 size A3
	dir L. SANDERS 1/25/95	enr M. SMYK 1/25/95	chr J. ROMBERGER 1/25/95	type Product Customer Drawing
	app M. SMYK 1/25/95			
sheet index	revision sheet			



Copyright FCI

PRODUCT NUMBER NOTE 8, 9 & 12	SIZE	STYLE	DIM C	DIM J	PIN PLATING	PLASTIC MATERIAL
66506 -025	2 X 20	D	1.900/48.26	.105/2.67	30u"/0.76u MIN (NOTE 16) OVER 50u"/1.27u Ni	NOTE 2
-026				.150/3.81	30u"/0.76u MIN (NOTE 16) OVER 50u"/1.27u Ni	
-027				.675/17.15	30u"/0.76u MIN (NOTE 16) OVER 50u"/1.27u Ni	
-028				.105/2.67	120/200u" TIN LEAD	
-028LF				.105/2.67	100/160u" TIN	
-029				.150/3.81	120/200u" TIN LEAD	
-029LF				.150/3.81	100/160u" TIN	
-030				.675/17.15	120/200u" TIN LEAD	
-030LF	2 X 20		1.900/48.26	.675/17.15	100/160u" TIN	
-031	2 X 25		2.400/60.96	.105/2.67	30u"/0.76u MIN (NOTE 16) OVER 50u"/1.27u Ni	
-032				.150/3.81	30u"/0.76u MIN (NOTE 16) OVER 50u"/1.27u Ni	
-033				.675/17.15	30u"/0.76u MIN (NOTE 16) OVER 50u"/1.27u Ni	
-034				.105/2.67	120/200u" TIN LEAD	
-034LF				.105/2.67	100/160u" TIN	
-035				.150/3.81	120/200u" TIN LEAD	
-035LF				.150/3.81	100/160u" TIN	
-036				.675/17.15	120/200u" TIN LEAD	
-036LF	2 X 25	D	2.400/60.96	.675/17.15	100/160u" TIN	
-037	2 X 7	C	.600/15.24	.105/2.67	30u"/0.76u MIN (NOTE 16) OVER 50u"/1.27u Ni	
-038				.150/3.81	30u"/0.76u MIN (NOTE 16) OVER 50u"/1.27u Ni	
-039				.675/17.15	30u"/0.76u MIN (NOTE 16) OVER 50u"/1.27u Ni	
-040				.105/2.67	120/200u" TIN LEAD	
-040LF				.105/2.67	100/160u" TIN	
-041				.150/3.81	120/200u" TIN LEAD	
-041LF				.150/3.81	100/160u" TIN	
-042				.675/17.15	120/200u" TIN LEAD	
-042LF	2 X 7	C	.600/15.24	.675/17.15	100/160u" TIN	
-043	2 X 8	D	.700/17.78	.105/2.67	30u"/0.76u MIN (NOTE 16) OVER 50u"/1.27u Ni	
-044				.150/3.81	30u"/0.76u MIN (NOTE 16) OVER 50u"/1.27u Ni	
-045				.675/17.15	30u"/0.76u MIN (NOTE 16) OVER 50u"/1.27u Ni	
-046				.105/2.67	120/200u" TIN LEAD	
-046LF				.105/2.67	100/160u" TIN	
-047				.150/3.81	120/200u" TIN LEAD	
-047LF				.150/3.81	100/160u" TIN	
-048				.675/17.15	120/200u" TIN LEAD	
66506 -048LF	2 X 8	D	.700/17.78	.675/17.15	100/160u" TIN	NOTE 2

mat'l. code	surface ISO 1302 ✓	tolerance ISO 406 ISO 1101	projection 	product family QUICKIE
ltr ecn nopr date	tolerances unless otherwise specified			title HEADER QUICKIE SLIM LINE VERTICAL 4 WALL
AK	angles	linear	INCH/MM	dwg no 66506
	±2'	XXXX.01/XXXX.3 XXXX.005/XXXX.13 XXXX.0020/XXXX.051	scale 1:1	sheet # of 10 size A3
	dr L. SANDERS	1/25/95		type Product Customer Drawing
	enr M. SMYK	1/25/95		
	chr J. ROMBERGER	1/25/95		
	app M. SMYK	1/25/95		
sheet index	revision sheet			

PRODUCT NUMBER NOTE 8,9 & 12	SIZE	STYLE	DIM C	DIM J	PIN PLATING	PLASTIC MATERIAL
66506 -049	2 X 5	B	.400/10.16	.150/3.81	30u"/0.76u MIN (NOTE 16) OVER 50u"/1.27u Ni	NOTE 2
-050	2 X 10	D	.900/22.86			
-051	2 X 13		1.200/30.48			
-052	2 X 17		1.600/40.64			
-053	2 X 20		1.900/48.26			
-054	2 X 25	D	2.400/60.96			
-055	2 X 7	C	.600/15.24			
-056	2 X 8	D	.700/17.78	.150/3.81	30u"/0.76u MIN (NOTE 16) OVER 50u"/1.27u Ni	
-057	2 X 30		2.900/73.66	.105/2.67	30u"/0.76u MIN (NOTE 16) OVER 50u"/1.27u Ni	
-058				.150/3.81	30u"/0.76u MIN (NOTE 16) OVER 50u"/1.27u Ni	
-059				.675/17.15	30u"/0.76u MIN (NOTE 16) OVER 50u"/1.27u Ni	
-060				.105/2.67	120/200u" TIN LEAD	
-060LF				.105/2.67	100/160u" TIN	
-061				.150/3.81	120/200u" TIN LEAD	
-061LF				.150/3.81	100/160u" TIN	
-062				.675/17.15	120/200u" TIN LEAD	
-062LF				.675/17.15	100/160u" TIN	
-063				.105/2.67	30u"/0.76u MIN (NOTE 16) OVER 50u"/1.27u Ni	
-064				.150/3.81		
-065	2 X 30	D	2.900/73.66	.675/17.15		
-066	2 X 5	B	.400/10.16	.105/2.67		
-067	2 X 5	B	.400/10.16	.675/17.15		
-068	2 X 7	C	.600/15.24	.105/2.67		
-069	2 X 7	C	.600/15.24	.675/17.15		
-070	2 X 8	D	.700/17.78	.105/2.67	30u"/0.76u MIN (NOTE 16) OVER 50u"/1.27u Ni	
-071	2 X 8	D	.700/17.78	.675/17.15	30u"/0.76u MIN (NOTE 16) OVER 50u"/1.27u Ni	
-072	2 X 10		.900/22.86	.105/2.67		
-073	2 X 10		.900/22.86	.675/17.15		
-074	2 X 13		1.200/30.48	.105/2.67		
-075	2 X 13		1.200/30.48	.675/17.15		
-076	2 X 17		1.600/40.64	.105/2.67		
-077	2 X 17		1.600/40.64	.675/17.15		
-078	2 X 20		1.900/48.26	.105/2.67		
-079	2 X 20		1.900/48.26	.675/17.15		
-080	2 X 25		2.400/60.96	.105/2.67		
66506 -081	2 X 25	D	2.400/60.96	.675/17.15	30u"/0.76u MIN (NOTE 16) OVER 50u"/1.27u Ni	NOTE 2

mat'l. code	surface ISO 1302 ✓	tolerance ISO 406 ISO 1101	projection 	product family QUICKIE
ltr ecn nopr date	tolerances unless otherwise specified			title HEADER QUICKIE SLIM LINE VERTICAL 4 WALL
AK	angles linear ±2'	.XXX±.01/.XXX±.03 .XXX±.005/.XXX±.013 .XXX±.0020/.XXX±.0051	INCH/MM scale 1:1	dwg no 66506
	dr L. SANDERS 1/25/95	enr M. SMYK 1/25/95	chr J. ROMBERGER 1/25/95	shee 5 of 10 size A3
	app M. SMYK 1/25/95			type Product Customer Drawing
sheet index	revision sheet			

PRODUCT NUMBER NOTE 8,9 & 12	SIZE	STYLE	DIM C	DIM J	PIN PLATING	PLASTIC MATERIAL
66506-082	2 X 5	B	.400/10.16	.105/2.67	15u"/0.38u MIN (NOTE 16) OVER 50u"/1.27u Ni	NOTE 2
-083	2 X 5	B	.400/10.16	.150/3.81		
-084	2 X 5	B	.400/10.16	.675/17.15		
-085	2 X 7	C	.600/15.24	.105/2.67		
-086	2 X 7	C	.600/15.24	.150/3.81		
-087	2 X 7	C	.600/15.24	.675/17.15		
-088	2 X 8	D	.700/17.78	.105/2.67		
-089	2 X 8		.700/17.78	.150/3.81		
-090	2 X 8		.700/17.78	.675/17.15		
-091	2 X 10		.900/22.86	.105/2.67		
-092	2 X 10		.900/22.86	.150/3.81		
-093	2 X 10		.900/22.86	.675/17.15		
-094	2 X 13		1.200/30.48	.105/2.67		
-095	2 X 13		1.200/30.48	.150/3.81		
-096	2 X 13		1.200/30.48	.675/17.15		
-097	2 X 17		1.600/40.64	.105/2.67		
-098	2 X 17		1.600/40.64	.150/3.81		
-099	2 X 17		1.600/40.64	.675/17.15		
-100	2 X 20		1.900/48.26	.105/2.67		
-101	2 X 20		1.900/48.26	.150/3.81		
-102	2 X 20		1.900/48.26	.675/17.15		
-103	2 X 25		2.400/60.96	.105/2.67		
-104	2 X 25		2.400/60.96	.150/3.81		
-105	2 X 25	D	2.400/60.96	.675/17.15	15u"/0.38u MIN (NOTE 16) OVER 50u"/1.27u Ni	
-106	2 X 30	D	2.900/73.66	.105/2.67	15u"/0.38u MIN (NOTE 16) OVER 50u"/1.27u Ni	
-107	2 X 30	D	2.900/73.66	.150/3.81	15u"/0.38u MIN (NOTE 16) OVER 50u"/1.27u Ni	
-108	2 X 30	D	2.900/73.66	.675/17.15	15u"/0.38u MIN (NOTE 16) OVER 50u"/1.27u Ni	
-109	2 X 5	B	.400/10.16	.105/2.67	30u"/0.76u MIN (NOTE 16) OVER 50u"/1.27u Ni	
-110				.150/3.81	30u"/0.76u MIN (NOTE 16) OVER 50u"/1.27u Ni	
-111				.675/17.15	30u"/0.76u MIN (NOTE 16) OVER 50u"/1.27u Ni	
-112				.105/2.67	120/200u" TIN LEAD	
-112LF				.105/2.67	100/160u" TIN	
-113				.150/3.81	120/200u" TIN LEAD	
-113LF				.150/3.81	100/160u" TIN	
-114				.675/17.15	120/200u" TIN LEAD	
66506-114LF	2 X 5	B	.400/10.16	.675/17.15	100/160u" TIN	NOTE 2

mat'l. code	surface ISO 1302 ✓	tolerance ISO 406 ISO 1101	projection 	product family QUICKIE
ltr ecn nopr date	tolerances unless otherwise specified		title HEADER QUICKIE SLIM LINE VERTICAL 4 WALL	
AK	angles ±2'	linear XXX.X/XXX.X XXX.X/XXX.X XXX.X/XXX.X	INCH/MM scale 1:1	dwg no 66506
	dr L. SANDERS 1/25/95	enr M. SMYK 1/25/95	chr J. ROMBERGER 1/25/95	shee 6 of 10 size A3
	app M. SMYK 1/25/95	type Product Customer Drawing		
sheet index	revision sheet			



Copyright FCI

PRODUCT NUMBER NOTE 8,9 & 12	SIZE	STYLE	DIM C	DIM J	PIN PLATING	PLASTIC MATERIAL
66506-115	2 X 5	B	.400/10.16	.105/2.67	15u"/0.38u MIN (NOTE 16) OVER 50u"/1.27u Ni	NOTE 2
-116				.150/3.81	15u"/0.38u MIN (NOTE 16) OVER 50u"/1.27u Ni	
-117				.675/17.15	15u"/0.38u MIN (NOTE 16) OVER 50u"/1.27u Ni	
-118				.105/2.67	30u"/0.76u MIN (NOTE 16) OVER 50u"/1.27u Ni	
-119				.150/3.81	30u"/0.76u MIN (NOTE 16) OVER 50u"/1.27u Ni	
-120	2 X 5	B	.400/10.16	.675/17.15	30u"/0.76u MIN (NOTE 16) OVER 50u"/1.27u Ni	NOTE 2
-121	DISCONTINUED					
THRU						
-216						
-217	2 X 12	D	1.100/27.94	.105/2.67	15u"/0.38u MIN (NOTE 16) OVER 50u"/1.27u Ni	NOTE 2
-218					30u"/0.76u MIN (NOTE 16) OVER 50u"/1.27u Ni	
-219					30u"/0.76u MIN (NOTE 16) OVER 50u"/1.27u Ni	
-220				.105/2.67	120/200u" TIN LEAD	
-220LF				.105/2.67	100/160u" TIN	
-221				.150/3.81	15u"/0.38u MIN (NOTE 16) OVER 50u"/1.27u Ni	
-222					30u"/0.76u MIN (NOTE 16) OVER 50u"/1.27u Ni	
-223					30u"/0.76u MIN (NOTE 16) OVER 50u"/1.27u Ni	
-224				.150/3.81	120/200u" TIN LEAD	
-224LF				.150/3.81	100/160u" TIN	
-225				.675/17.15	15u"/0.38u MIN (NOTE 16) OVER 50u"/1.27u Ni	
-226					30u"/0.76u MIN (NOTE 16) OVER 50u"/1.27u Ni	
-227					30u"/0.76u MIN (NOTE 16) OVER 50u"/1.27u Ni	
-228					120/200u" TIN LEAD	
-228	2 X 12		1.100/27.94	.675/17.15	100/160u" TIN	
-229	2 X 15		1.400/35.56	.105/2.67	15u"/0.38u MIN (NOTE 16) OVER 50u"/1.27u Ni	
-230					30u"/0.76u MIN (NOTE 16) OVER 50u"/1.27u Ni	
-231					30u"/0.76u MIN (NOTE 16) OVER 50u"/1.27u Ni	
-232				.105/2.67	120/200u" TIN LEAD	
-232LF				.105/2.67	100/160u" TIN	
-233	2 X 15	D	1.400/35.56	.150/3.81	15u"/0.38u MIN (NOTE 16) OVER 50u"/1.27u Ni	
-234	2 X 15	D	1.400/35.56	.150/3.81	30u"/0.76u MIN (NOTE 16) OVER 50u"/1.27u Ni	
-235				.150/3.81	30u"/0.76u MIN (NOTE 16) OVER 50u"/1.27u Ni	
-236				.150/3.81	120/200u" TIN LEAD	
-236LF				.150/3.81	100/160u" TIN	
66506-237	2 X 15	D	1.400/35.56	.675/17.15	15u"/0.38u MIN (NOTE 16) OVER 50u"/1.27u Ni	NOTE 2

mat'l. code	surface ISO 1302 ✓	tolerance ISO 406 ISO 1101	projection 	product family QUICKIE
ltr ecn nopr date	tolerances unless otherwise specified			title HEADER QUICKIE SLIM LINE VERTICAL 4 WALL
AJ	angles	linear	INCH/MM	dwg no 66506
	±2'	XXXX-005/XXXX-13 XXXX-0020/XXXX-051	scale 1:1	sheet 7 of 10 size A3
	dr	L. SANDERS	1/25/95	FCJ type Product Customer Drawing
	engr	M. SMYK	1/25/95	
	chr	J. ROMBERGER	1/25/95	
	appd	M. SMYK	1/25/95	
sheet index	revision sheet			

PRODUCT NUMBER NOTE 8,9 & 12	SIZE	STYLE	DIM C	DIM J	PIN PLATING	PLASTIC MATERIAL
66506-238	2 X 5	B	.400/10.16	.675/17.15	30u"/0.76u MIN (NOTE 16) OVER 50u"/1.27u Ni	NOTE 2
-239					30u"/0.76u MIN (NOTE 16) OVER 50u"/1.27u Ni	
-240					120/200u" TIN LEAD	
-240LF	2 X 15		1.400/35.56	.675/17.15	100/160u" TIN	
-241	2 X 22		2.100/53.34	.105/2.67	15u"/0.38u MIN (NOTE 16) OVER 50u"/1.27u Ni	
-242					30u"/0.76u MIN (NOTE 16) OVER 50u"/1.27u Ni	
-243					30u"/0.76u MIN (NOTE 16) OVER 50u"/1.27u Ni	
-244				.105/2.67	120/200u" TIN LEAD	
-244LF				.105/2.67	100/160u" TIN	
-245				.150/3.81	15u"/0.38u MIN (NOTE 16) OVER 50u"/1.27u Ni	
-246					30u"/0.76u MIN (NOTE 16) OVER 50u"/1.27u Ni	
-247					30u"/0.76u MIN (NOTE 16) OVER 50u"/1.27u Ni	
-248				.150/3.81	120/200u" TIN LEAD	
-248LF				.150/3.81	100/160u" TIN	
-249				.675/17.15	15u"/0.38u MIN (NOTE 16) OVER 50u"/1.27u Ni	
-250					30u"/0.76u MIN (NOTE 16) OVER 50u"/1.27u Ni	
-251					30u"/0.76u MIN (NOTE 16) OVER 50u"/1.27u Ni	
-252	2 X 22		2.100/53.34	.675/17.15	120/200u" TIN LEAD	
66506-252LF	2 X 22		2.100/53.34	.675/17.15	100/160u" TIN	
66506-253	2 X 17	D	1.600/40.64	.105/2.67	15u"/0.38u MIN (NOTE 16) OVER 50u"/1.27u Ni	NOTE 2
66506-254	UNAVAILABLE					
THRU						
66506-279	UNAVAILABLE					
66506-280	2 X 10	D	.900/22.86	.105/2.67	120/200u" TIN LEAD	NOTE 2
66506-280LF	2 X 10	D	.900/22.86	.105/2.67	100/160u" TIN	NOTE 2
66506-281	UNAVAILABLE					
THRU						
66506-306	UNAVAILABLE					
66506-307	2 X 5	B	.400/10.16	.097/2.46	30u"/0.76u MIN (NOTE 16) OVER 50u"/1.27u Ni	NOTE 2
-308	2 X 5	B	.400/10.16			
-309	2 X 7	C	.600/15.24			
-310	2 X 8	D	.700/17.78			
-311	2 X 10		.900/22.86			
-312	2 X 12		1.100/27.94			
-66506-313	2 X 13	D	1.200/30.48	.097/2.46	30u"/0.76u MIN (NOTE 16) OVER 50u"/1.27u Ni	NOTE 2

mat'l. code	surface ISO 1302 ✓	tolerance ISO 406 ISO 1101	projection 	product family QUICKIE
ltr ecn nopr date	tolerances unless otherwise specified	angles linear ±2'	INCH/MM scale 1:1	title HEADER QUICKIE SLIM LINE VERTICAL 4 WALL
AK				dwg no 66506
	dir L. SANDERS 1/25/95	engr M. SMYK 1/25/95	chr J. ROMBERGER 1/25/95	shee 8 of 10 size A3
	appd M. SMYK 1/25/95			type Product Customer Drawing
sheet index	revision sheet			



FCIconnect.com

Copyright FCI

PRODUCT NUMBER NOTE 8,9 & 12	SIZE	STYLE	DIM C	DIM J	PIN PLATING (NOTE 16)	PLASTIC MATERIAL NOTE 2
66506-314	2 X 15	D	1.400/35.56	.097/2.46	30u"/0.76u MIN (NOTE 16) OVER 50u"/1.27u Ni	
-315	2 X 17		1.600/40.64			
-316	2 X 20		1.900/48.26			
-317	2 X 22		2.100/53.34			
-318	2 X 25		2.400/60.96			
-319	2 X 30		2.900/73.66	.097/2.46	30u"/0.76u MIN (NOTE 16) OVER 50u"/1.27u Ni	
-320	2 X 8		.700/17.78	.105/2.67	30u"/0.76u MIN (NOTE 16) OVER 50u"/1.27u Ni	
-321	2 X 25		2.400/60.96		30u"/0.76u MIN (NOTE 16) OVER 50u"/1.27u Ni	
-322	2 X 8		.700/17.78		50u"/1.27u MIN (NOTE 16) OVER 50u"/1.27u Ni	
-323	2 X 17		1.600/40.64	.105/2.67	50u"/1.27u MIN (NOTE 16) OVER 50u"/1.27u Ni	
-324	2 X 25		2.400/60.96	.120/3.05	15u"/.38u MIN (NOTE 16) OVER 50u"/1.27u Ni	
-325	2 X 25		2.400/60.96	.150/3.81	30u"/0.76u MIN (NOTE 16) OVER 50u"/1.27u Ni	
-326	2 X 10		.900/22.86	.120/3.05	15u"/.38u MIN (NOTE 16) OVER 50u"/1.27u Ni	
-327	2 X 17		1.600/40.64	.120/3.05	15u"/.38u MIN (NOTE 16) OVER 50u"/1.27u Ni	
-328	2 X 25		2.400/60.96	.120/3.05	15u"/.38u MIN (NOTE 16) OVER 50u"/1.27u Ni	
-329	2 X 13		1.200/30.48	.150/3.81	15u"/.38u MIN (NOTE 16) OVER 50u"/1.27u Ni	
-330	2 X 25		2.400/60.96		15u"/.38u MIN (NOTE 16) OVER 50u"/1.27u Ni	
-331	2 X 30		2.900/73.66		15u"/.38u MIN (NOTE 16) OVER 50u"/1.27u Ni	
-332	2 X 17		1.600/40.64		15u"/.38u MIN (NOTE 16) OVER 50u"/1.27u Ni	
-333	2 X 20		1.900/48.26	.150/3.81	30u"/0.76u MIN (NOTE 16) OVER 50u"/1.27u Ni	
-334	2 X 10		.900/22.86	.105/2.67	15u"/.38u MIN (NOTE 16) OVER 50u"/1.27u Ni	
-335	2 X 20		1.900/48.26	.105/2.67	30u"/0.76u MIN (NOTE 16) OVER 50u"/1.27u Ni	
-336	2 X 22		2.100/53.34	.105/2.67	30u"/0.76u MIN (NOTE 16) OVER 50u"/1.27u Ni	
-337	2 X 12	D	1.100/27.94	.150/3.81	15u"/.38u MIN (NOTE 16) OVER 50u"/1.27u Ni	
-338	2 X 5	B	.400/10.16	.150/3.81	15u"/.38u MIN (NOTE 16) OVER 50u"/1.27u Ni	
-339	2 X 4	B	.300/7.62	.105/2.67	15u"/.38u MIN (NOTE 16) OVER 50u"/1.27u Ni	
66506-340	2 X 10	D	.900/22.86	.150/3.81	30u"/0.76u MIN (NOTE 16) OVER 50u"/1.27u Ni	NOTE 2

mat'l. code	surface ISO 1302 ✓	tolerance ISO 406 ISO 1101	projection 	product family QUICKIE
ltr ecn nopr date	tolerances unless otherwise specified			title HEADER QUICKIE SLIM LINE VERTICAL 4 WALL
AK	angles	linear	INCH/MM	dwg no 66506
	±2'	XXXX.01/XXXX.3 XXXX.005/XXXX.13 XXXX.0020/XXXX.051	scale 1:1	sheet # of 10 size A3
	dir	L. SANDERS	1/25/95	type Product Customer Drawing
	engr	M. SMYK	1/25/95	
	chr	J. ROMBERGER	1/25/95	
	appd	M. SMYK	1/25/95	
sheet index	revision sheet			



Copyright FCI

PRODUCT NUMBER NOTE 8, 9 & 12	SIZE	STYLE	DIM C	DIM J	PIN PLATING (NOTE 16)	PLASTIC MATERIAL
66506-341	2 X 17	D	1.600/40.64	.150/3.81	30u"/.76u MIN (NOTE 16) OVER 50u"/1.27u Ni	NOTE 2
-342	2 X 10	D	.900/22.86	.150/3.81	15u"/.38u MIN (NOTE 16) OVER 50u"/1.27u Ni	NOTE 2
-343	2 X 17	D	1.600/40.64	.150/3.81	15u"/.38u MIN (NOTE 16) OVER 50u"/1.27u Ni	NOTE 2
-344	U N A S S I G N E D					
-345	2 X 20	D	1.900/48.26	.120/3.05	15u"/.38u MIN (NOTE 16) OVER 50u"/1.27u Ni	NOTE 2
-346	U N A S S I G N E D					
-347	U N A S S I G N E D					
-348	2 X 5	B	.400/10.16	.105/2.67	15u"/.38u MIN (NOTE 16) OVER 50u"/1.27u Ni	NOTE 2
-349	2 X 7	C	.600/15.24			
-350	2 X 8	D	.700/17.78			
-351	2 X 10		.900/22.86			
-352	2 X 13		1.200/30.48			
-353	2 X 17		1.600/40.64			
-354	2 X 20		1.900/48.26			
-355	2 X 22		2.100/53.34			
-356	2 X 25		2.400/60.96			
-357	2 X 30		2.900/73.66	.105/2.67	15u"/.38u MIN (NOTE 16) OVER 50u"/1.27u Ni	
-358	2 X 10		.900/22.86	.150/3.81	30u"/.76u MIN (NOTE 16) OVER 50u"/1.27u Ni	NOTE 11
-359	2 X 17		1.600/40.64	.150/3.81	30u"/.76u MIN (NOTE 16) OVER 50u"/1.27u Ni	NOTE 11
-360	2 X 12	D	1.100/27.94	.295/7.49	15u"/.38u MIN (NOTE 16) OVER 50u"/1.27u Ni	
-361	2 X 5	B	.400/10.16	.105/2.67	15u"/.38u MIN (NOTE 16) OVER 50u"/1.27u Ni	
-362	2 X 5	B	.400/10.16	.105/2.67	30u"/.76u MIN (NOTE 16) OVER 50u"/1.27u Ni	
-363	2 X 8	D	.700/17.78	.105/2.67		
-364	2 X 10	D	.900/22.86	.105/2.67		
-365	2 X 15	D	1.400/35.56	.105/2.67		
-366	2 X 17	D	1.600/40.64	.105/2.67		
-367	2 X 5	B	.400/10.16	.150/3.81		
-368	2 X 17	D	1.600/40.64	.150/3.81		
66506-369	2 X 25	D	2.400/60.96	.150/3.81	30u"/.76u MIN (NOTE 16) OVER 50u"/1.27u Ni	NOTE 2

NOTE 11
NOTE 11

mat'l. code	surface ISO 1302 ✓	tolerance ISO 406 ISO 1101	projection 	product family QUICKIE
ltr ecn nopr date	tolerances unless otherwise specified			title HEADER QUICKIE SLIM LINE VERTICAL 4 WALL
AK	angles	linear	INCH/MM	dwg no 66506
	±2'	XXXX.01/XXXX.03 XXXX.005/XXXX.13 XXXX.0020/XXXX.051	scale 1:1	sheet 10 of 10 size A3
	dir	L. SANDERS	1/25/95	FCJ type Product Customer Drawing
	enr	M. SMYK	1/25/95	
	chr	J. ROMBERGER	1/25/95	
	app	M. SMYK	1/25/95	
sheet index	revision sheet			

X-ON Electronics

Largest Supplier of Electrical and Electronic Components

Click to view similar products for [Headers & Wire Housings](#) category:

Click to view products by [Amphenol](#) manufacturer:

Other Similar products are found below :

[95000-104TRLF](#) [10135584-644402LF](#) [DF62W-EP2022PCA](#) [95000-106TRLF](#) [DF62W-2022SCA](#) [DF62W-EP2022PC](#) [2203348](#) [DF62W-2022SC](#) [1084018](#) [1029039](#) [1084017](#) [802-10-012-10-002000](#) [1112640](#) [1112639](#) [000-34000](#) [0009482033](#) [0009507031](#) [57102-S06-03LF](#) [57202-S52-04LF](#) [PCN6-15S-2.5E](#) [0039019024](#) [58102-G61-06LF](#) [582553-1](#) [0009508121](#) [0022285053](#) [0050291907](#) [018731A](#) [LY20-4P-DT1-P1E-BR](#) [02.125.8002.8](#) [60101931](#) [60598-1 \(Cut Strip\)](#) [M1625-3R/100](#) [61062-3](#) [61082-181009](#) [636-1427](#) [638009-1](#) [641938-9](#) [641991-4](#) [644168-1](#) [644827-2](#) [647662-1](#) [65039-019ELF](#) [65817-002LF](#) [65817-015LF](#) [65863-015LF](#) [66207-023LF](#) [67016-026LF](#) [67046-001LF](#) [67095-007LF](#) [68002-116](#)