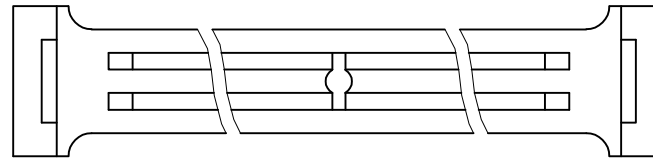
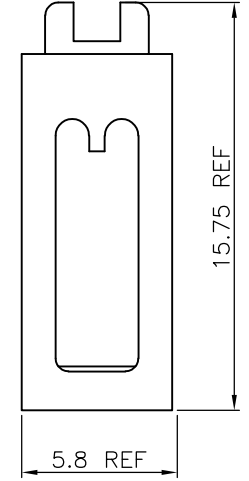
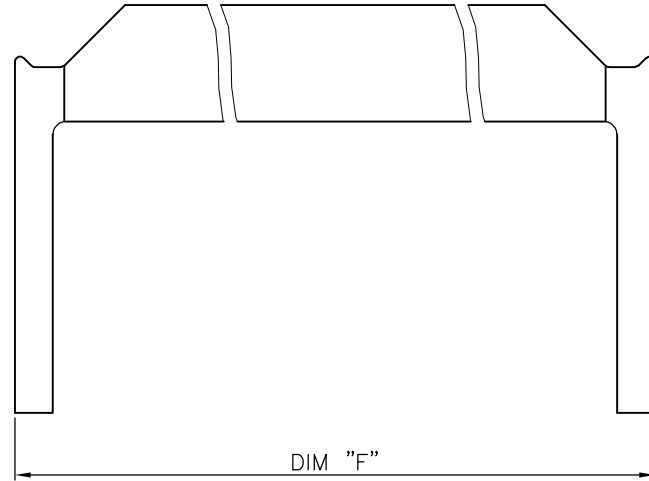


PRODUCT NUMBER  
67016-YXXLF

COLOR CODE  
0=GREY  
2=BLACK

INDICATES THE PRODUCT IS RoHS  
COMPATIBLE, SEE NOTE 2

STYLE	SIZE	DIM "F"
06	2x 3	12.18
08	2x 4	14.54
10	2x 5	17.08
12	2x 6	19.62
14	2x 7	22.16
16	2x 8	24.70
18	2x 9	27.24
20	2x10	29.78
24	2x12	34.86
26	2x13	37.40
30	2x15	42.48
34	2x17	47.56
40	2x20	55.18
44	2x22	60.26
50	2x25	67.88
60	2x30	80.58
64	2x32	85.66



NOTES:

1. MOLDING MATERIAL UNFILLED POLYESTER  
FLAME RETARDANT PER UL-94-V0
2. RoHS COMPATIBLE PRODUCT
  - a - LABELLING:  
- MEETS PACKAGING SPECS AS PER GS-14-920
  - b - LEGAL STATEMENT: SEE GS-22-008
  - c - THE PRODUCT IS NOT INTENDED TO BE EXPOSED  
TO MANUFACTURING SOLDER PROCESS
  - d - PRODUCT MEETS WITH EU 2002/EG/95

mat'l. code SEE NOTE 1		surface ISO 1302	tolerance ISO 406 ISO 1101	projection mm	product family QKIE III
ltr	ecn no	dr	date	tolerances unless otherwise specified	title STRAIN RELIEF STANDARD
F	F05-0255	LMU	05.09.28	angles .X ±0.3	scale 5:1
G	F06-0270	LMU	06.09.12	linear .XX ±0.15	
H	F06-0274	LMU	06.09.25	.XXX ±0.05	
J	F-26819	JCA	17.04.26	dr L.MULIN 05.09.28	dwg no sheet 1 of 1 size
K	F-37268	DDE	20.06.03	engr J.COMPAGNON 05.09.28	67016 A3
				chr	type CUSTOMER Drawing
				appd JM.C 05.09.28	
sheet index	revision sheet				

## X-ON Electronics

Largest Supplier of Electrical and Electronic Components

*Click to view similar products for [Headers & Wire Housings](#) category:*

*Click to view products by [Amphenol](#) manufacturer:*

Other Similar products are found below :

[892-18-020-10-001101](#) [58102-G61-06LF](#) [582553-1](#) [0009485154](#) [009176003701906](#) [0050291907](#) [LY20-4P-DT1-P1E-BR](#) [02.125.8002.8](#)  
[609-3404](#) [61062-3](#) [622-0430](#) [622-3653LF](#) [63453-116](#) [636-1030](#) [636-1427](#) [636-3427](#) [636-4007](#) [641938-9](#) [641991-4](#) [644827-2](#) [65817-010LF](#)  
[65817-015LF](#) [65863-015LF](#) [66207-023LF](#) [67095-007LF](#) [67601157](#) [68648-049](#) [70.362.1628.0](#) [70-4210](#) [70-4226B](#) [70-4853B](#) [707-5020](#) [707-](#)  
[5028](#) [71.350.2428.0](#) [71918-208LF](#) [71961-016LF](#) [733-134](#) [733-162](#) [754199-000](#) [760-3052](#) [787-8014-00](#) [79531-3000](#) [FCN-360C032-B](#) [FCN-](#)  
[367T-T012/H](#) [FCN-723D010/2](#) [80.063.4001.1](#) [800-90-001-10-001000](#) [800-90-010-10-002000](#) [801-43-002-10-013000](#) [801-43-006-10-002000](#)