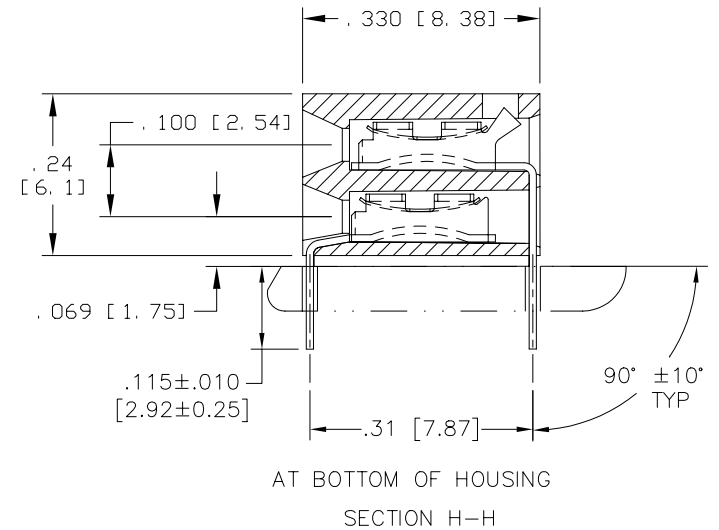
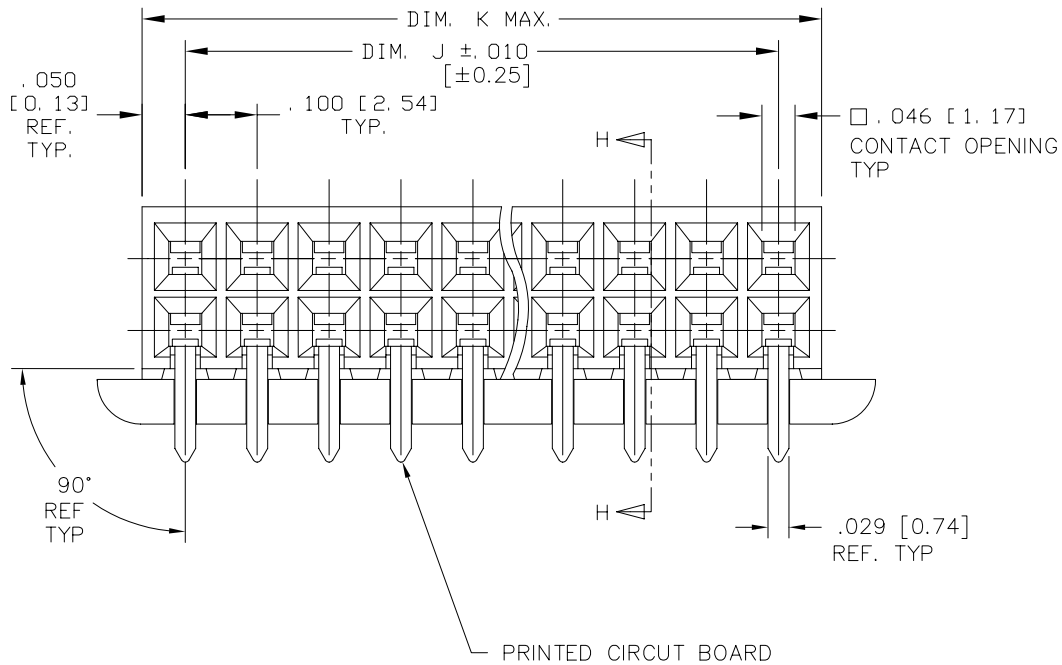
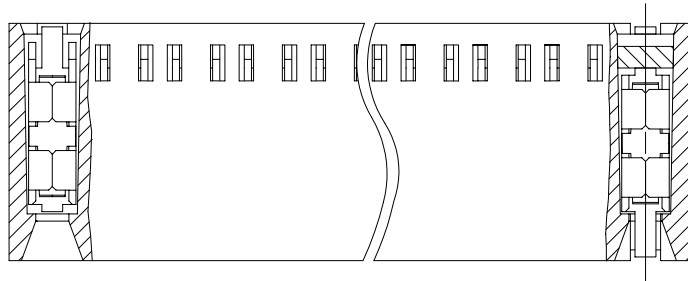


PRODUCT NO.  
SEE TABLE



mat'l. code		surface		tolerance		projection		product family	
-		ISO 1302 <input checked="" type="checkbox"/>		ISO 406				CARD CONN	
D		JGS 5/9/00		tolerances unless otherwise specified		INCH/MM		title	
E		v02512 AZ 10/11/00		angles		.xx $\pm$ .01/.3		2 x.100 CARD CONNECTOR	
F		M05-0181 MHT 8/16/05		linear		.xxx $\pm$ .005/.13		dwg no	
G		M06-0117 AEA 06/26/06		0° $\pm$ 2'		.xxxx $\pm$ .0020/.051		67227	
sheet		revision		G		G		type	
index		sheet		1 2		3 4		Product Customer Drawing	
								sheet 1 of 4 size	
								A3	
								scale 4:1	
				J. SHREINER 5/9/90					
				enr M. HAHN 5/9/90					
				chr M. HAHN 5/9/90					
				appd M. HAHN 5/9/90					

Copyright FCI  
 FCIconnect.com

1

2 3

4

5

6

NOTES:

- 1. HOUSING MATERIAL:  
30% GLASS-FILLED THERMOPLASTIC POLYESTER  
PER UL 94-V0. COLOR BLACK.
- 2. TERMINAL MATERIAL:  
BODY: 1/2 HARD BRASS. ALLOY C26000 .010 [0.25] THICK  
SPRING: BE-CU. ALLOY C17200, HEAT TREATED  
BODY PLATING:  
30μ"/0.76μm Au OVER 50μ"/1.27μm Ni  
IN CONTACT AREA.  
SPRING PLATING: GOLD FLASH
- 3. APPLICATION INFORMATION:  
A. RECOMMENDED MOUNTING HOLE  
PATTERN IS SHOWN IN FIGURE "A"  
B. ALL MATING PINS TO BE  
.025 [0.64] SQUARE ON TRUE  
CENTER OF GIVEN TERMINAL  
SPACINGS WITHIN .015 [0.38] DIA.  
C. SUGGESTED MATING PIN LENGTH  
.350±.020 [8.89±0.51]
- ④. ADD "LF" SUFFIX AT THE END OF PART NUMBER FOR LEAD  
FREE OPTION.
- ⑤. THESE PRODUCT MEETS EUROPEAN UNION DIRECTIVES AND OTHER  
COUNTRY REGULATIONS AS DESCRIBED IN GS-22-008
- 6. THIS PART WILL WITHSTAND EXPOSURE TO 260°C PEAK TEMPERATURE  
FOR 20 SECONDS IN A WAVE SOLDER, INFRA-RED OR VAPOR PHASE  
SOLDER PROCESS.

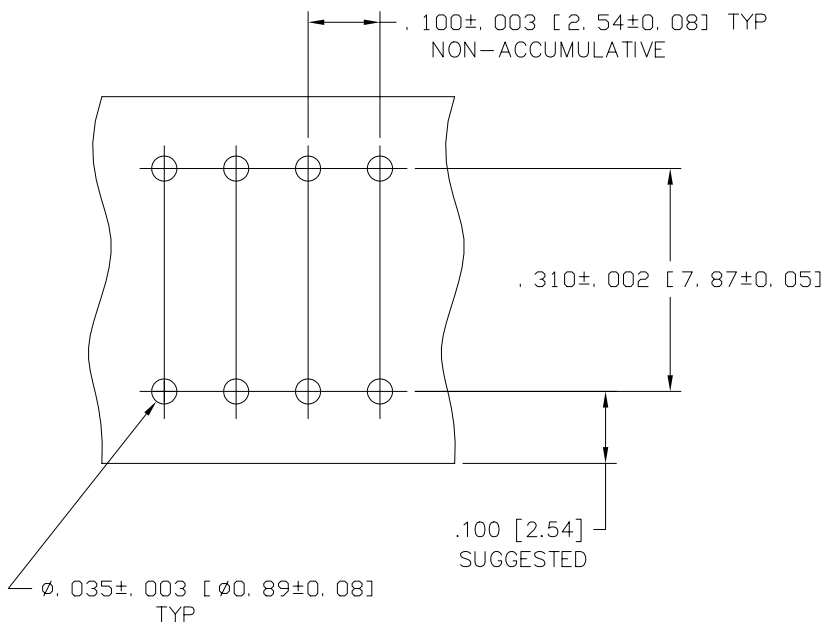


FIGURE A  
SCALE 10/1



FCIconnect.com

Copyright FCI

mat'l. code		surface		tolerance		projection		product family	
-		ISO 1302 ✓		ISO 406 ISO 1101		⊕		CARD CONN	
ltr		ecn no dr		date		tolerances unless otherwise specified		title	
G						.xx±.01/.3 .xxx ±.005/.13 .xxxx ±.0020/.051		2 x.100 CARD CONNECTOR	
						angles linear		INCH/MM	
						0°±2'		scale 4:1	
				dr		J. SHREINER 5/9/90		dwg no	
				enr		M. HAHN 5/9/90		sheet 2 of 4 size	
				chr		M. HAHN 5/9/90		67227 A3	
				appd		M. HAHN 5/9/90		type Product Customer Drawing	
sheet index		revision sheet							

form: A3

1

2

3

4

5

6

PRODUCT NO.	NO. OF POS.	DIM. J	DIM. K	INSUL. PLUG	LEAD FREE OPTION
67227-001	2X1	.000/0.00	.100/2.54	NO	NOTE 5,6
-002	2X2	.100/2.54	.200/5.08		
-003	2X3	.200/5.08	.300/7.62		
-004	2X4	.300/7.62	.400/10.16		
-005	2X5	.400/10.16	.500/12.70		
-006	2X6	.500/12.07	.600/15.24		
-007	2X7	.600/15.24	.700/17.78		
-008	2X8	.700/17.78	.800/20.32		
-009	2X9	.800/20.32	.900/22.86		
-010	2X10	.900/22.86	1.000/25.40		
-011	2X11	1.000/25.40	1.100/27.94		
-012	2X12	1.100/27.94	1.200/30.48		
-013	2X13	1.200/30.48	1.300/33.02		
-014	2X14	1.300/33.02	1.400/35.56		
-015	2X15	1.400/35.56	1.500/38.10		
-016	2X16	1.500/38.10	1.600/40.64		
-017	2X17	1.600/40.64	1.700/43.18		
-018	2X18	1.700/43.18	1.800/45.72		
-019	2X19	1.800/45.72	1.900/48.26		
-020	2X20	1.900/48.26	2.000/50.80		
-021	2X21	2.000/50.80	2.100/53.34		
-022	2X22	2.100/53.34	2.200/55.88		
-023	2X23	2.200/55.88	2.300/58.42		
-024	2X24	2.300/58.42	2.400/60.96		
-025	2X25	2.400/60.96	2.500/63.50		
-026	2X26	2.500/63.50	2.600/66.04		
-027	2X27	2.600/66.04	2.700/68.58		
-028	2X28	2.700/68.58	2.800/71.12		
-029	2X29	2.800/71.12	2.900/73.66		
-030	2X30	2.900/73.66	3.000/76.20		
-031	2X31	3.000/76.20	3.100/78.74		
-032	2X32	3.100/78.74	3.200/81.28		
-033	2X33	3.200/81.28	3.300/83.82		
-034	2X34	3.300/83.82	3.400/86.36		
-035	2X35	3.400/86.36	3.500/88.90		
-036	2X36	3.500/88.90	3.600/91.44		
-037	2X37	3.600/91.44	3.700/93.98		
-038	2X38	3.700/93.98	3.800/96.52		
-039	2X39	3.800/96.52	3.900/99.06		
-040	2X40	3.900/99.06	4.000/101.60		
67227-041	2X41	4.000/101.60	4.000/104.14	NO	



FCIconnect.com

Copyright FCI

mat'l. code		surface		tolerance		projection		product family	
-		ISO 1302		ISO 406		ISO 1101		CARD CONN	
ltr		ecn no		date		tolerances unless otherwise specified		title	
G						.xx±.01/.3		2 x.100 CARD CONNECTOR	
						.xxx ±.005/.13		INCH/MM	
						.xxxx ±.0020/.051		scale 4:1	
						dr J. SHREINER 5/9/90		dwg no sheet 3 of 4 size	
						enr M. HAHN 5/9/90		67227 A3	
						chr M. HAHN 5/9/90		type Product Customer Drawing	
						appd M. HAHN 5/9/90			
sheet index		revision sheet							

PRODUCT NO.	NO. OF POS.	DIM. J	DIM. K	INSUL. PLUG	LEAD FREE OPTION
67227-042	2X42	4.100/104.14	4.200/106.68	NO	NOTE 5,6
-043	2X43	4.200/106.68	4.300/109.22		
-044	2X44	4.300/109.22	4.400/111.76		
-045	2X45	4.400/111.76	4.500/114.30		
-046	2X46	4.500/114.30	4.600/116.84		
-047	2X47	4.600/116.84	4.700/119.38		
-048	2X48	4.700/119.38	4.800/121.92		
-049	2X49	4.800/121.92	4.900/124.46		
-050	2X50	4.900/124.46	5.000/127.00		
-051	2X51	5.000/127.00	5.100/129.54		
-052	2X52	5.100/129.54	5.200/132.08		
-053	2X53	5.200/132.08	5.300/134.62		
-054	2X54	5.300/134.62	5.400/137.16		
-055	2X55	5.400/137.16	5.500/139.70		
-056	2X56	5.500/139.70	5.600/142.24		
-057	2X57	5.600/142.24	5.700/144.78		
-058	2X58	5.700/144.78	5.800/147.32		
-059	2X59	5.800/147.32	5.900/149.86		
-060	2X60	5.900/149.86	6.000/152.40		
-061	2X61	6.000/152.40	6.100/154.94		
-062	2X62	6.100/154.94	6.200/157.48		
-063	2X63	6.200/157.48	6.300/160.02		
-064	2X64	6.300/160.02	6.400/162.56		
67227-065	2X65	6.400/162.56	6.500/165.10	NO	NOTE 5,6



Copyright FCJ

mat'l. code		surface		tolerance		projection		product family	
-		ISO 1302 ✓		ISO 406 ISO 1101				CARD CONN	
ltr	ecn	no	dr	date		tolerances unless otherwise specified		title	
G						.xx±.01/.3 .xxx ±.005/.13 .xxxx ±.0020/.051		2 x.100 CARD CONNECTOR	
				0'±2'		linear		INCH/MM	
								scale 4:1	
				dr		J. SHREINER		5/9/90	
				enr		M. HAHN		5/9/90	
				chr		M. HAHN		5/9/90	
				appd		M. HAHN		5/9/90	
sheet index		revision sheet							
								dwg no 67227 sheet 4 of 4 size A3 type Product Customer Drawing	

form: A3 1 2 3 4 5 6

## X-ON Electronics

Largest Supplier of Electrical and Electronic Components

*Click to view similar products for [Headers & Wire Housings](#) category:*

*Click to view products by [Amphenol](#) manufacturer:*

Other Similar products are found below :

[892-18-020-10-001101](#) [58102-G61-06LF](#) [582553-1](#) [0009485154](#) [009176003701906](#) [0050291907](#) [LY20-4P-DT1-P1E-BR](#) [02.125.8002.8](#)  
[609-3404](#) [61062-3](#) [622-0430](#) [622-3653LF](#) [63453-116](#) [636-1030](#) [636-1427](#) [636-3427](#) [636-4007](#) [641938-9](#) [641991-4](#) [644827-2](#) [65817-010LF](#)  
[65817-015LF](#) [65863-015LF](#) [66207-023LF](#) [67095-007LF](#) [67601157](#) [68648-049](#) [70.362.1628.0](#) [70-4210](#) [70-4226B](#) [70-4853B](#) [707-5020](#) [707-](#)  
[5028](#) [71.350.2428.0](#) [71918-208LF](#) [71961-016LF](#) [733-134](#) [733-162](#) [754199-000](#) [760-3052](#) [787-8014-00](#) [79531-3000](#) [FCN-360C032-B](#) [FCN-](#)  
[367T-T012/H](#) [FCN-723D010/2](#) [80.063.4001.1](#) [800-90-001-10-001000](#) [800-90-010-10-002000](#) [801-43-002-10-013000](#) [801-43-006-10-002000](#)