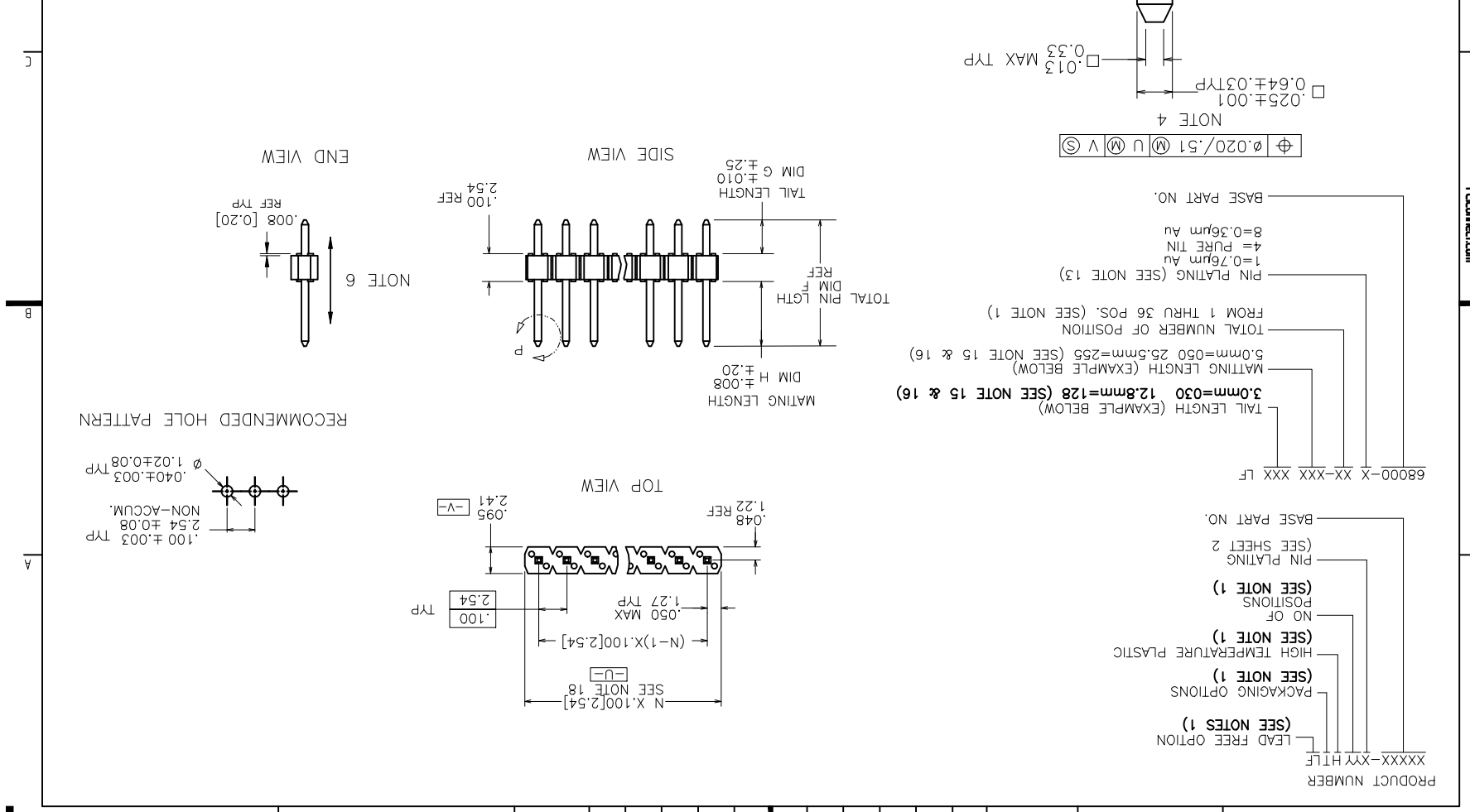


Sheet	Revision	Author	Appd	Check	Drawn	Scale	Proj	Drawn	Scale	Proj	Drawn	Scale	Proj	Drawn	Scale	Proj	Drawn	Scale	Proj
CM	M09-0109	MHT	7/10/09	T.HANNA	01/05/99														
CV	M09-009C	MHT	6/19/09	J.MURPHY	01/05/99														
CU	M08-0331	MHT	12/01/08	T.HANNA	01/05/99														
CT	M08-0269	MHT	9/23/08	T.BREWBAKER	01/05/99														
CS	M08-0168	MHT	2/26/08																
CR	M07-015C	AGS	3/6/07																
CP	M07-0118	AGS	2/16/07																
Ltr	Eqn no	Dr	date	References unless otherwise specified															
mat'l code			SEE NOTES 2 & 3																
surface			ISO 1302																
tolerance			ISO 406																
projection			ISO 1001																
product family			BERGSTIK																
title			BERGSTIK® II HEADER																
type			Product Customer Drawing																
dwg no			68000																
sheet 1 of 8 size			A3																



- PRODUCT NUMBER XXXXX-XXX HTLF
- LEAD FREE OPTION (SEE NOTES 1)
- PACKAGING OPTIONS (SEE NOTE 1)
- HIGH TEMPERATURE PLASTIC (SEE NOTE 1)
- NO OF POSITIONS (SEE NOTE 1)
- PIN PLATING (SEE SHEET 2)
- BASE PART NO. (SEE NOTE 1)
- TAIL LENGTH (EXAMPLE BELOW) $3.0\text{mm}=0.30$ $12.8\text{mm}=1.28$ (SEE NOTE 15 & 16)
- MATING LENGTH (EXAMPLE BELOW) $5.0\text{mm}=0.50$ $25.5\text{mm}=2.55$ (SEE NOTE 15 & 16)
- TOTAL NUMBER OF POSITION FROM 1 THRU 36 POS. (SEE NOTE 1)
- PIN PLATING (SEE NOTE 13)
- $1=0.7\mu\text{m Au}$
- $4=\text{PURE TIN}$
- $8=0.36\mu\text{m Au}$
- BASE PART NO.

6 5 4 3 2 1 0 6 5 4 3 2 1 0

6 5 4 3 2 1 0 6 5 4 3 2 1 0

Copyright FO



FCIconnect.com

A

B

C

D

PIN PLATING CODES:	
XXXXX-1Y	30u"/0.76u MIN (SEE NOTE 13) OVER 50u"/1.27u MIN NI
XXXXX-2Y	15u"/0.38u MIN (SEE NOTE 13) OVER 50u"/1.27u MIN NI
XXXXX-3Y	50u"/1.27u MIN Au OVER 50u"/1.27u MIN NI
XXXXX-4Y	100u"/2.54u MIN 5u OVER 50u"/1.27u MIN NI (SEE NOTE 14)
XXXXX-5Y	15u"/0.38u MIN (SEE NOTE 13) OVER 50u"/1.27u MIN NI
XXXXX-6Y	30u"/0.76u MIN (SEE NOTE 13) OVER 50u"/1.27u MIN NI
XXXXX-7Y	30u"/0.76u MIN Au OVER 50u"/1.27u MIN NI
XXXXX-8Y	15u"/0.38u MIN Au OVER 50u"/1.27u MIN NI
XXXXX-9Y	15u"/0.38u MIN GXT OVER 50u"/1.27u MIN NI
XXXXX-0Y	30u"/0.76u MIN GXT OVER 50u"/1.27u MIN NI

NOTES

① PART NUMBER OPTIONS:

PIN PLATING CODES (SEE ABOVE)

HIGH TEMP. MATERIAL:
PART NUMBERS WITH AND WITHOUT "H" WILL BE SUPPLIED WITH HIGH TEMPERATURE PLASTIC

NUMBER OF POSITIONS :

ANY NUMBER OF POSITIONS FROM 1 THRU 36. -X00H INDICATES BERGSTRIIP™ PRODUCT. SEE PAGE 3 FOR SPECIAL GEOMETRY OF THIS CONTINUOUS STRIP PRODUCT. AUTOMATED REELS WILL CONTAIN 36,000 PINS.

SEE SPECIFIC PART NUMBERS FOR AVAILABILITY.

PACKAGING :

NO INDICATOR IS STANDARD PACKAGING IN POLY BAGS. EIGHT DIGIT PART NUMBERS FOLLOWED BY A "T" ARE PACKAGED IN TUBES. SEE SPECIFIC PART NUMBERS FOR AVAILABILITY.

EIGHT DIGIT PART NUMBERS FOLLOWED BY A "C" ARE PACKAGED IN TUBES WITH PICKUP CAP APPLIED. (NOT TOOLED)

BERGSTRIIP™ PART NUMBERS FOLLOWED BY A "B" ARE BULK PRICED.

LEAD FREE :
ADD "HLF" SUFFIX AT THE END OF PART NUMBER FOR LEAD FREE OPTION, NOT AVAILABLE FOR -5YY,-5YYH,-6YY & -6YYH

②

BODY MATERIAL :
BERGSTRIIP™ MANUFACTURER'S OPTION OF NYLON, PCT GLASS FIBER REINFORCED, OR LCP MINERAL FILLED

FLAME RETARDENT PER UL-94V-0.
COLOR : BLACK

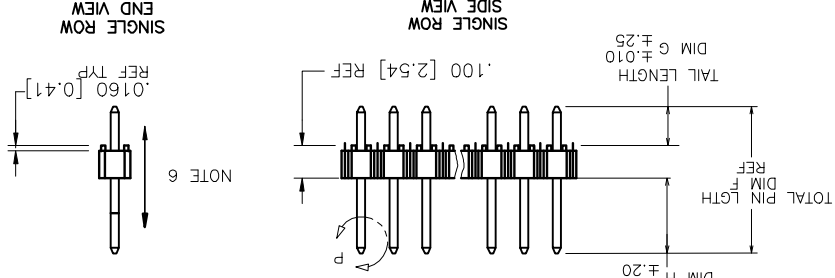
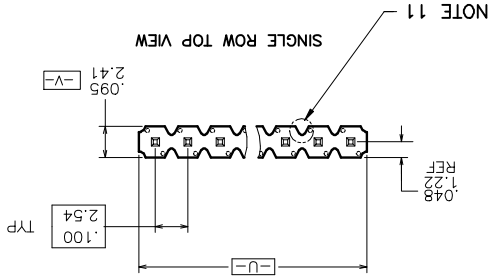
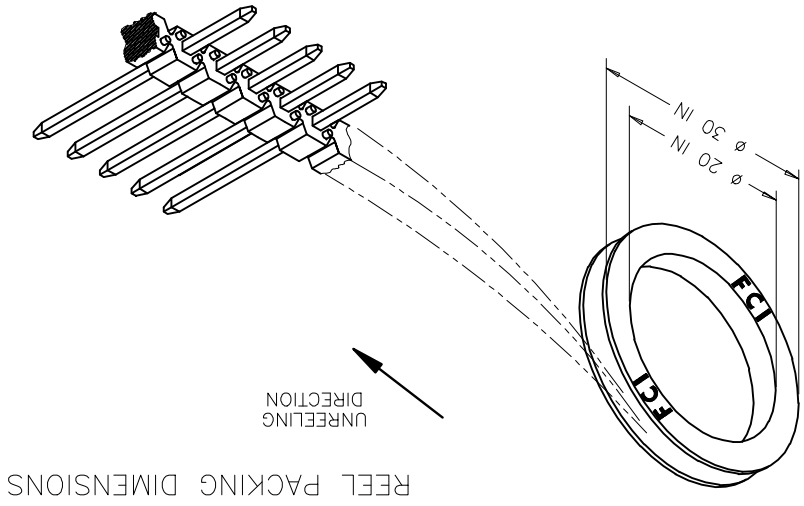
BERGSTRIIP™; PRODUCED WITH HIGH TEMPERATURE LCP THERMOPLASTIC, FLAME RETARDENT PER UL-94V-0.
COLOR : BLACK

PART NUMBERS WITH AND WITHOUT "H" SUFFIX WILL WITHSTAND EXPOSURE TO 260°C PEAK TEMPERATURE FOR 20 SECONDS IN WAVE SOLDER, INFRA-RED OR VAPOR PHASE SOLDER PROCESS.

mat'l. code		SEE NOTES 2 & 3		ISO 100		ISO 1001		projection		product family		BERGSTRIIP	
surface		ISO 100		ISO 1001		ISO 100		ISO 1001		ISO 100		ISO 1001	
linear		linear		linear		linear		linear		linear		linear	
angles		angles		angles		angles		angles		angles		angles	
0°±2'		0°±2'		0°±2'		0°±2'		0°±2'		0°±2'		0°±2'	
T.BREWBÄCKER		T.BREWBÄCKER		T.BREWBÄCKER		T.BREWBÄCKER		T.BREWBÄCKER		T.BREWBÄCKER		T.BREWBÄCKER	
01/05/95		01/05/95		01/05/95		01/05/95		01/05/95		01/05/95		01/05/95	
engr		engr		engr		engr		engr		engr		engr	
T.HANNA		T.HANNA		T.HANNA		T.HANNA		T.HANNA		T.HANNA		T.HANNA	
01/05/95		01/05/95		01/05/95		01/05/95		01/05/95		01/05/95		01/05/95	
ctf		ctf		ctf		ctf		ctf		ctf		ctf	
J.MURPHY		J.MURPHY		J.MURPHY		J.MURPHY		J.MURPHY		J.MURPHY		J.MURPHY	
01/05/95		01/05/95		01/05/95		01/05/95		01/05/95		01/05/95		01/05/95	
appd		appd		appd		appd		appd		appd		appd	
T.HANNA		T.HANNA		T.HANNA		T.HANNA		T.HANNA		T.HANNA		T.HANNA	
01/05/95		01/05/95		01/05/95		01/05/95		01/05/95		01/05/95		01/05/95	
sheet		sheet		sheet		sheet		sheet		sheet		sheet	
revision		revision		revision		revision		revision		revision		revision	
index		index		index		index		index		index		index	

③ PIN MATERIAL : PHOS-BRONZE.
 ④ MEASURED WITH PART IN RESTRAINED CONDITION.
 ⑤ TWO SIDES OF PIN TIPS NOT PLATED. TYPICAL BOTH ENDS.
 ⑥ 2LBS/0.9KG MIN PIN RETENTION IN EITHER DIRECTION.
 ⑦ PIN CANNOT PROTRUDE PAST EDGE OF HOUSING. MUST BE .005±.005/.13±.13 FROM END OF HOUSING HOLE.
 ⑧ MILITARY BERGSTRIIP™ HEADER P/N XXXXX-XY-MIL. NOT AVAILABLE.
 ⑨ ±.010/0.25 TOL APPLIES TO ALL "G" TALS EXCEPT INDICATED PARTS ON TABLE WHERE +.010/0.25 - .000/0.00 APPLIES. INDICATED PART NUMBERS ARE PRODUCED AND SOLD IN THE TAIWAN/SINGAPORE AREAS. THESE ARE NOT AVAILABLE IN BERGSTRIIP™ CONTINUOUS STRIP.
 ⑩ NOTCH CONFIGURATION WILL VARY PER VENDOR'S DISCRETION. THESE PRODUCTS MEETS EUROPEAN UNION DIRECTIVES AND OTHER COUNTRY REGULATION AS DESCRIBED IN GS-22-008.
 ⑪ PLATING OPTIONS:
 MAY BE EITHER GOLD OR EXT PLATED AT MANUFACTURER'S OPTION. "THIS PRODUCT HAS 100% TIN PLATING IN THE INTERFACE AND HAS NOT BEEN TESTED FOR WHISKER GROWTH IN ALL INTERCONNECT ENVIRONMENTS."
 ⑫ THE GAL DON'T EXCEED 34.5mm
 ⑬ INCREMENTS BY 0.1mm IN LENGTHS ONLY
 ⑭ FOR SPECIAL PACKAGING REQUEST PLEASE CONTACT PRODUCT MANAGER FOR AVAILABILITY
 ⑮ TO DETERMINE DIMENSIONS:
 N=NUMBER OF POSITION PER ROW
 EXAMPLE: 10 POS. N X .100/2.54

mat'l code	SEE NOTES 2 & 3		
surface	ISO 1302	ISO 1301	ISO 406
tolerance	ISO 406		
projection	ISO 1302		
product family	BERGSTIK		
title	BERGSTIK® II HEADER		
angles	linear	XXXX.000/XXXX.000	XXXX.000/XXXX.000
linear	linear	XXXX.000/XXXX.000	XXXX.000/XXXX.000
scale	1:1		
dwg no	68000		
sheet no	sheet 3 of 8		
type	Product Customer Drawing		
sheet	revision	date	author
index	sheet	date	author



Copyright FCI
FCI.com

Title: BERGSTIK		Product family: BERGSTIK	
Projection:		Tolerances: <input checked="" type="checkbox"/> surface <input type="checkbox"/> ISO 1302 <input type="checkbox"/> ISO 406 <input type="checkbox"/> ISO 1001	
Material code: SEE NOTES 2 & 3	Surface: <input checked="" type="checkbox"/> surface <input type="checkbox"/> ISO 1302 <input type="checkbox"/> ISO 406 <input type="checkbox"/> ISO 1001	Tolerances unless otherwise specified	
LT: _____	Ech no: _____	DR: _____	date: _____
CW: _____	angles: _____	linear: _____	XXX1.00/XXX1.03
0 ±.2	_____	_____	_____
Scale: 1:1	_____	_____	_____
dwg no: 68000	sheet 4 of 8 size	Product Customer Drawing	
Type: _____		Revision: _____	
Sheet: _____		Index: _____	

PRODUCT NUMBER	TOTAL PIN LGTH	DIM F	DIM F	DIM F	DIM G	DIM G	DIM H	DIM H	MATING LENGTH	BERGSTIK™ LF	OPTION
55492-XYH	0.315	8.00	0.095	2.41	0.120	3.05	POLY BAGS	NO	NOTE 1,12		
60017-XYH	0.620	15.75	0.210	5.33	0.310	7.87	POLY BAGS	NO			
60018-XYH	0.660	16.76	0.250	6.35	0.310	7.87	POLY BAGS	NO			
63334-XYH	0.435	11.05	0.095	2.41	0.240	6.10	POLY BAGS	NO			
68000-XYH	0.425	10.80	0.095	2.41	0.230	5.84	POLY BAGS	YES			
68001-XYH	0.450	11.43	0.120	3.05	0.230	5.84	POLY BAGS/TUBES	YES			
68002-XYH	0.480	12.19	0.150	3.81	0.230	5.84	POLY BAGS	YES			
68003-XYH	0.525	13.34	0.195	4.95	0.230	5.84	POLY BAGS	NO			
68004-XYH	0.525	13.34	0.107	2.72	0.318	8.08	POLY BAGS	YES			
68024-XYH	0.568	14.43	0.150	3.81	0.318	8.08	POLY BAGS	YES			
68031-XYH	0.513	13.03	0.183	4.65	0.230	5.84	POLY BAGS	NO			
68032-XYH	0.543	13.79	0.213	5.41	0.230	5.84	POLY BAGS	NO			
68033-XYH	0.708	17.98	0.473	12.01	0.33	3.43	POLY BAGS	NO			
68415-XYH	0.615	15.62	0.115	2.92	0.400	10.16	POLY BAGS	NO			
68416-XYH	0.813	20.65	0.483	12.27	0.230	5.84	POLY BAGS	NO			
68418-XYH	0.730	18.54	0.400	10.16	0.230	5.84	POLY BAGS	NO			
68422-XYH	0.631	16.03	0.213	5.41	0.318	8.08	POLY BAGS	NO			
68443-XYH	0.755	19.18	0.425	10.80	0.230	5.84	POLY BAGS	NO			
68456-XYH	0.825	20.96	0.115	2.92	0.610	15.49	POLY BAGS	NO			
68457-XYH	0.548	13.92	0.130	3.30	0.318	8.08	POLY BAGS	NO			
68465-XYH	0.925	23.50	0.595	15.11	0.230	5.84	POLY BAGS	NO			
68466-XYH	0.925	23.50	0.128	3.25	0.697	17.70	POLY BAGS	NO			
68472-XYH	0.913	23.19	0.413	10.49	0.400	10.16	POLY BAGS	NO			
68479-XYH	0.718	18.24	0.388	9.86	0.230	5.84	POLY BAGS	NO			
68483-XYH	0.835	21.21	0.417	10.59	0.318	8.08	POLY BAGS	NO			
68487-XYH	0.705	17.91	0.110	2.79	0.495	12.57	POLY BAGS	NO			
68489-XYH	1.095	27.81	0.765	19.43	0.230	5.84	POLY BAGS	NO			
68490-XYH	1.025	26.04	0.695	17.65	0.230	5.84	POLY BAGS	NO			
68497-XYH	0.612	15.54	0.085	2.16	0.427	10.85	POLY BAGS	NO			
68603-XYH	0.555	14.10	0.120	3.05	0.335	8.51	POLY BAGS	NO			
68604-XYH	0.600	15.24	0.120	3.05	0.380	9.65	POLY BAGS	NO			

NOTE 1,12

OPTION

6 5 4 3 2 1 0

0 1 2 3 4 5 6

Copyright PD
FCI
FCImet.com

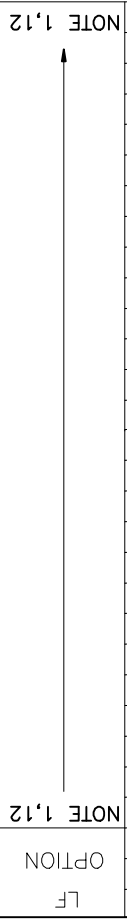
PRODUCT NUMBER	TOTAL PIN LGTH	DIM F	DIM F	DIM F	DIM G	DIM G	DIM G	DIM H	DIM H	DIM H	MATING LENGTH	BERGSTRIIP™ LF
68629-XY	0.621	15.77	0.203	5.16	0.318	8.08	POLY BAGS	NO	NOTE 1,12			
68630-XY	0.603	15.32	0.273	6.93	0.230	5.84	POLY BAGS	NO				
68631-XY	0.703	17.86	0.203	5.16	0.400	10.16	POLY BAGS	NO				
68632-XY	0.743	18.87	0.413	10.49	0.230	5.84	POLY BAGS	NO				
68633-XY	0.643	16.33	0.225	5.72	0.318	8.08	POLY BAGS	NO				
68634-XY	1.013	25.73	0.683	17.35	0.230	5.84	POLY BAGS	NO				
68642-XY	0.913	23.19	0.583	14.81	0.230	5.84	POLY BAGS	NO				
68652-XY	1.470	37.34	0.670	17.02	0.700	17.78	POLY BAGS	NO				
68653-XY	0.735	18.67	0.095	2.41	0.540	13.72	POLY BAGS	NO				
68654-XY	1.050	26.67	0.670	17.02	0.280	7.11	POLY BAGS	NO				
68655-XY	0.708	17.98	0.290	7.37	0.318	8.08	POLY BAGS	NO				
68656-XY	1.113	28.27	0.613	15.57	0.400	10.16	POLY BAGS	NO				
68657-XY	0.588	14.94	0.368	9.35	0.120	3.05	POLY BAGS	NO				
68658-XY	0.820	20.83	0.130	3.30	0.590	14.99	POLY BAGS	NO				
68659-XY	0.608	15.44	0.398	10.11	0.110	2.79	POLY BAGS	NO				
68686-XY	1.016	25.81	0.458	11.63	0.458	11.63	POLY BAGS	NO				
68689-XY	0.913	23.19	0.213	5.41	0.600	15.24	POLY BAGS	NO				
68705-XY	0.395	10.03	0.095	2.41	0.200	5.08	POLY BAGS	NO				
68717-XY	0.615	15.62	0.285	7.24	0.230	5.84	POLY BAGS	NO				
68730-XY	0.555	14.10	0.225	5.72	0.230	5.84	POLY BAGS	NO				
68731-XY	0.880	22.35	0.440	11.18	0.340	8.64	POLY BAGS	NO				
68735-XY	1.016	25.81	0.520	13.21	0.396	10.06	POLY BAGS	NO				
68755-XY	1.166	29.62	0.533	13.54	0.533	13.54	POLY BAGS	NO				
68760-XY	0.803	20.40	0.353	8.97	0.350	8.89	POLY BAGS	NO				
68762-XY	0.588	14.94	0.213	5.41	0.275	6.99	POLY BAGS	NO				
68771-XY	0.470	11.94	0.100	2.54	0.270	6.86	POLY BAGS	NO				
68781-XY	0.691	17.55	0.273	6.93	0.318	8.08	POLY BAGS	NO				

NOTE 1,12

OPTION

mat'l. code	SEE NOTES 2 & 3	surface	ISO 1002	ISO 1001	ISO 1000	tolerance unless otherwise specified	XXE/01/XX03	INCH/MM	scale 1:1	product family	BERGSTIK
ltf	ecn no	dr	date	angles	linear	XXXX.000/XXXX.001	XXXX.000/XXXX.013	INCH/MM	scale 1:1	product family	BERGSTIK® II HEADER
dwg no	68000	sheet 5 of 8 size	A3	type	Product Customer Drawing						
sheet	revision	sheet	index	dr	engr	appd	01/05/95	01/05/95	01/05/95	T.HANNA	J.MURPHY
sheet	revision	sheet	index	dr	engr	appd	01/05/95	01/05/95	01/05/95	T.HANNA	J.MURPHY

Product Number	TOTAL PIN LGTH	DIM F	DIM F	DIM G	DIM G	DIM G	DIM H	DIM H	DIM H	MATING LENGTH	BERGSTRIP™	LF	OPTION
68795-XY	0.500	12.70	0.062	1.57	0.338	8.59	POLY BAGS						NOTE 1,12
68796-XY	0.633	16.08	0.423	10.74	0.110	2.79	POLY BAGS						
68797-XY	0.413	10.49	0.213	5.41	0.100	2.54	POLY BAGS						
69148-XY	0.442	11.43	0.000	0.00	0.350	8.89	POLY BAGS						
69152-XY	0.720	18.29	0.120	3.05	0.500	12.70	POLY BAGS/TUBES						
69173-XY	0.530	13.46	0.135	3.43	0.295	7.49	POLY BAGS						
69188-XY	0.751	19.08	0.333	8.46	0.318	8.08	POLY BAGS						
69751-XY	0.440	11.18	0.170	4.32	0.170	4.32	POLY BAGS	NOTE 10					
71417-XY	0.664	16.87	0.115	2.92	0.449	11.40	POLY BAGS	NOTE 10					
72260-XY	0.930	23.62	0.090	2.29	0.740	18.80	POLY BAGS						
72323-XY	1.200	30.48	0.100	2.54	1.000	25.40	POLY BAGS						
72457-XY	1.100	27.94	0.090	2.29	0.910	23.11	POLY BAGS						
73698-XY	1.100	27.94	0.120	3.05	0.880	22.35	POLY BAGS						
74464-XY	1.028	26.11	0.610	15.49	0.318	8.08	POLY BAGS						
78240-XY	0.663	16.84	0.333	8.46	0.230	5.84	POLY BAGS						
78287-XY	0.678	17.22	0.120	3.05	0.458	11.63	POLY BAGS						
78290-XY	1.250	31.75	0.500	12.70	0.650	16.51	POLY BAGS						
78511-XY	0.538	13.67	0.120	3.05	0.318	8.08	POLY BAGS/TUBES						
78595-XY	NOT AVAILABLE												
78931-XY	NOT AVAILABLE												
78958-XY	NOT AVAILABLE												
78959-XY	NOT AVAILABLE												
78977-XY	NOT AVAILABLE												
78998-XY	0.430	10.92	0.155	3.94	0.175	4.45	POLY BAGS						
78999-XY	NOT AVAILABLE												
79428-XY	0.695	17.65	0.120	3.05	0.475	12.07	POLY BAGS						
79849-XY	0.620	15.75	0.120	3.05	0.400	10.16	POLY BAGS						



mat'l code
SEE NOTES 2 & 3

surface
tolerance
ISO 406
ISO 1001

projection

product family
BERGSTIK

title
BERGSTIK® II HEADER

dwg no
68000

sheet 6 of 8 size
A3

type
Product Customer Drawing

Sheet	Revision	Sheet	Index

dwg no
68000

sheet 6 of 8 size
A3

type
Product Customer Drawing

Sheet	Revision	Sheet	Index
dp	T.BREWBAKER 01/05/99		
engr	T.HANNA 01/05/99		
ctr	J.MURPHY 01/05/99		
appd	T.HANNA 01/05/99		

angles
linear
XXX1/XXX2/XXX3/XXX4/XXX5/XXX6/XXX7/XXX8/XXX9/XXX10/XXX11/XXX12/XXX13/XXX14/XXX15/XXX16/XXX17/XXX18/XXX19/XXX20/XXX21/XXX22/XXX23/XXX24/XXX25/XXX26/XXX27/XXX28/XXX29/XXX30/XXX31/XXX32/XXX33/XXX34/XXX35/XXX36/XXX37/XXX38/XXX39/XXX40/XXX41/XXX42/XXX43/XXX44/XXX45/XXX46/XXX47/XXX48/XXX49/XXX50/XXX51/XXX52/XXX53/XXX54/XXX55/XXX56/XXX57/XXX58/XXX59/XXX60/XXX61/XXX62/XXX63/XXX64/XXX65/XXX66/XXX67/XXX68/XXX69/XXX70/XXX71/XXX72/XXX73/XXX74/XXX75/XXX76/XXX77/XXX78/XXX79/XXX80/XXX81/XXX82/XXX83/XXX84/XXX85/XXX86/XXX87/XXX88/XXX89/XXX90/XXX91/XXX92/XXX93/XXX94/XXX95/XXX96/XXX97/XXX98/XXX99/XXX100

linear
XXX1/XXX2/XXX3/XXX4/XXX5/XXX6/XXX7/XXX8/XXX9/XXX10/XXX11/XXX12/XXX13/XXX14/XXX15/XXX16/XXX17/XXX18/XXX19/XXX20/XXX21/XXX22/XXX23/XXX24/XXX25/XXX26/XXX27/XXX28/XXX29/XXX30/XXX31/XXX32/XXX33/XXX34/XXX35/XXX36/XXX37/XXX38/XXX39/XXX40/XXX41/XXX42/XXX43/XXX44/XXX45/XXX46/XXX47/XXX48/XXX49/XXX50/XXX51/XXX52/XXX53/XXX54/XXX55/XXX56/XXX57/XXX58/XXX59/XXX60/XXX61/XXX62/XXX63/XXX64/XXX65/XXX66/XXX67/XXX68/XXX69/XXX70/XXX71/XXX72/XXX73/XXX74/XXX75/XXX76/XXX77/XXX78/XXX79/XXX80/XXX81/XXX82/XXX83/XXX84/XXX85/XXX86/XXX87/XXX88/XXX89/XXX90/XXX91/XXX92/XXX93/XXX94/XXX95/XXX96/XXX97/XXX98/XXX99/XXX100

scale 1:1

INCH/MM

product family
BERGSTIK

title
BERGSTIK® II HEADER

dwg no
68000

sheet 6 of 8 size
A3

type
Product Customer Drawing

Copyright FO

ESD:com

PRODUCT NUMBER	TOTAL PIN LGTH	DIM F	DIM F	DIM G	DIM G	DIM H	DIM H	DIM H	MATING LENGTH	BERGSTRIP™
	ENGLISH	METRIC	ENGLISH	METRIC	ENGLISH	METRIC	ENGLISH	METRIC	PACKAGING	NOTES
84918-XYH	0.340	8.64	0.120	3.05	0.120	3.05	POLY BAGS	3.05	YES	NOTE 1,12
84921-XYH	0.370	9.40	0.150	3.81	0.120	3.05	POLY BAGS	3.05	YES	
86506-XY	0.440	11.18	0.120	3.05	0.220	5.59	POLY BAGS	5.59	YES	
86579-XY	0.450	11.43	0.120	3.05	0.230	5.84	POLY BAGS	5.84	NOTE 9	
86634-XY										
86635-XY										
86636-XY										
86637-XY										
86638-XY										
86793-XY	0.900	22.86	0.100	2.54	0.700	17.78	POLY BAGS	17.78	NOTE 10	
86899-XY	1.020	25.91	0.120	3.05	0.800	20.32	POLY BAGS	20.32		
87185-XY	1.238	31.45	0.095	2.41	1.043	26.49	POLY BAGS	26.49	NOTE 10	
87204-XY	0.895	22.73	0.120	3.05	0.675	17.15	POLY BAGS	17.15		
87241-XY	1.000	25.40	0.120	3.05	0.780	19.81	POLY BAGS	19.81		
87502-XYH	1.130	28.70	0.110	2.79	0.920	23.37	POLY BAGS	23.37		
87827-XY	0.380	9.65	0.120	3.05	0.160	4.06	POLY BAGS	4.06		
87916-XY	1.058	26.87	0.128	3.25	0.830	21.08	POLY BAGS	21.08		
88005-XY	0.536	13.61	0.095	2.41	0.341	8.66	POLY BAGS	8.66	NOTE 10	
88706-XY	0.900	22.86	0.100	2.54	0.700	17.78	POLY BAGS	17.78		
89232-XY	0.325	8.26	0.000	0.00	0.230	5.84	POLY BAGS	5.84	NOTE 7	

LF OPTION NOTE 1,12

mat'l code	SEE NOTES 2 & 3		surface	ISO 1302	projection	ISO 1071	product family	BERGSTIK
ltf	ecn no	dr	date	tolerances unless otherwise specified			title	BERGSTIK
CW	angles	linear	linear	XXXX.006/XXXX.13	INCH/MM	XXXX.006/XXXX.13	BERGSTIK® II HEADER	
	0+2.			XXXX.006/XXXX.051	scale	1:1	1.00/2.54cc SR STRAIGHT	
					dwg no	sheet 7 of 8 size	68000	
					type	Product Customer Drawing	A3	
sheet	revision							
index								

sheet	revision	appd	T.HANNA	01/05/95
		ctr	J.MURPHY	01/05/95
		engr	T.HANNA	01/05/95
		dr	T.BREWBAKER	01/05/95

1 2 3 4 5 6

Sheet	Revision	Sheet	Index
appd	T.HANNA 01/05/95		
chr	J.MURPHY 01/05/95		
engr	T.HANNA 01/05/95		
dr	T.BREWBAKER 01/05/95		
dwg no	68000	Product Customer Drawing	
sheet	8 of 8	size	A3
scale	1:1	linear	0 ±.2
angles	XXXI.000/XXXI.03	linear	XXXI.000/XXXI.03
inches/mm	XXXI.000/XXXI.03	inches/mm	XXXI.000/XXXI.03
title	BERGSTIK® II HEADER		
product family	BERGSTIK		
projection			
tolerance	ISO 406		
surface	ISO 1302		
material code	SEE NOTES 2 & 3		
lit	ecn no	date	

1 2 3 4 5 6

PRODUCT NUMBER	TOTAL PIN LGTH	DIM F	DIM F	DIM G	DIM G	DIM H	DIM H	MATING LENGTH	BERGSTIK™
90522-XY	0.668	16.97	0.135	3.43	0.433	11.00	POLY BAGS	NOTE 10	NO
90547-XY	0.508	12.90	0.095	2.41	0.313	7.95	POLY BAGS	NOTE 10	NO
90719-XY	0.384	9.75	0.106	2.69	0.178	4.52	POLY BAGS		NO
90726-XY	0.440	11.18	0.110	2.79	0.230	5.84	POLY BAGS		YES
91276-XY	1.225	31.12	0.225	5.72	0.900	22.86	POLY BAGS		NO
92020-XY	0.372	9.45	0.094	2.39	0.178	4.52	POLY BAGS		NO
92418-XY	0.572	14.53	0.118	3.00	0.354	8.99	POLY BAGS		NO
93167-XY	0.394	10.01	0.059	1.50	0.235	5.97	POLY BAGS		NO
93287-XY	0.585	14.86	0.085	2.16	0.400	10.16	POLY BAGS		NO
93944-XY	0.941	23.90	0.130	3.30	0.711	18.06	POLY BAGS		NO
93992-XY	0.415	10.54	0.085	2.16	0.230	5.84	POLY BAGS		NO
94063-XY	0.376	9.55	0.138	3.51	0.138	3.51	POLY BAGS	NOTE 10	NO
94094-XY	0.592	15.04	0.314	7.98	0.178	4.52	POLY BAGS		NO
94544-XY	0.550	13.97	0.130	3.30	0.330	8.38	POLY BAGS	NOTE 10	NO
94611-XY	0.320	8.13	0.095	2.41	0.125	3.18	POLY BAGS		NO
95017-XY	0.560	14.22	0.060	1.52	0.400	10.16	POLY BAGS		NO
95103-XY	1.064	27.03	0.433	11.00	0.531	13.49	POLY BAGS	NOTE 10	NO
95104-XY	0.370	9.40	0.126	3.20	0.144	3.66	POLY BAGS	NOTE 10	NO
95648-XY	0.655	16.64	0.155	3.94	0.400	10.16	POLY BAGS		NO
95655-XY	1.164	29.57	0.095	2.41	0.969	24.61	POLY BAGS	NOTE 10	NO
98001-XY	0.610	15.49	0.420	10.67	0.090	2.29	POLY BAGS		NO
98136-XY	0.475	12.07	0.095	2.41	0.280	7.11	POLY BAGS		NO
1004394-XY	0.290	7.37	0.095	2.41	0.095	2.41	POLY BAGS		NO
10076764-XY	0.479	12.19	0.114	2.9	0.265	6.75	POLY BAGS		YES
10103017-XY	0.335	8.51	0.130	3.30	0.105	2.67	POLY BAGS		NO

NOTE 1,12

NOTE 1,12

OPTION

LF

1 2 3 4 5 6

Copyright PD

FCMnet.com

X-ON Electronics

Largest Supplier of Electrical and Electronic Components

Click to view similar products for [Headers & Wire Housings](#) category:

Click to view products by [Amphenol](#) manufacturer:

Other Similar products are found below :

[95000-104TRLF](#) [10135584-644402LF](#) [DF62W-EP2022PCA](#) [95000-106TRLF](#) [DF62W-2022SCA](#) [DF62W-EP2022PC](#) [2203348](#) [DF62W-2022SC](#) [1084018](#) [1029039](#) [1084017](#) [802-10-012-10-002000](#) [1112640](#) [1112639](#) [000-34000](#) [0009482033](#) [0009507031](#) [57102-S06-03LF](#) [57202-S52-04LF](#) [PCN6-15S-2.5E](#) [0039019024](#) [58102-G61-06LF](#) [582553-1](#) [0009485154](#) [0009508121](#) [0022285053](#) [0050291907](#) [018731A](#) [LY20-4P-DT1-P1E-BR](#) [02.125.8002.8](#) [60101931](#) [60598-1 \(Cut Strip\)](#) [M1625-3R/100](#) [61062-3](#) [61082-181009](#) [636-1427](#) [638009-1](#) [641938-9](#) [641991-4](#) [644168-1](#) [647662-1](#) [65039-019ELF](#) [65817-002LF](#) [65817-015LF](#) [65863-015LF](#) [66207-023LF](#) [67016-026LF](#) [67046-001LF](#) [67095-007LF](#) [67230-005LF](#)