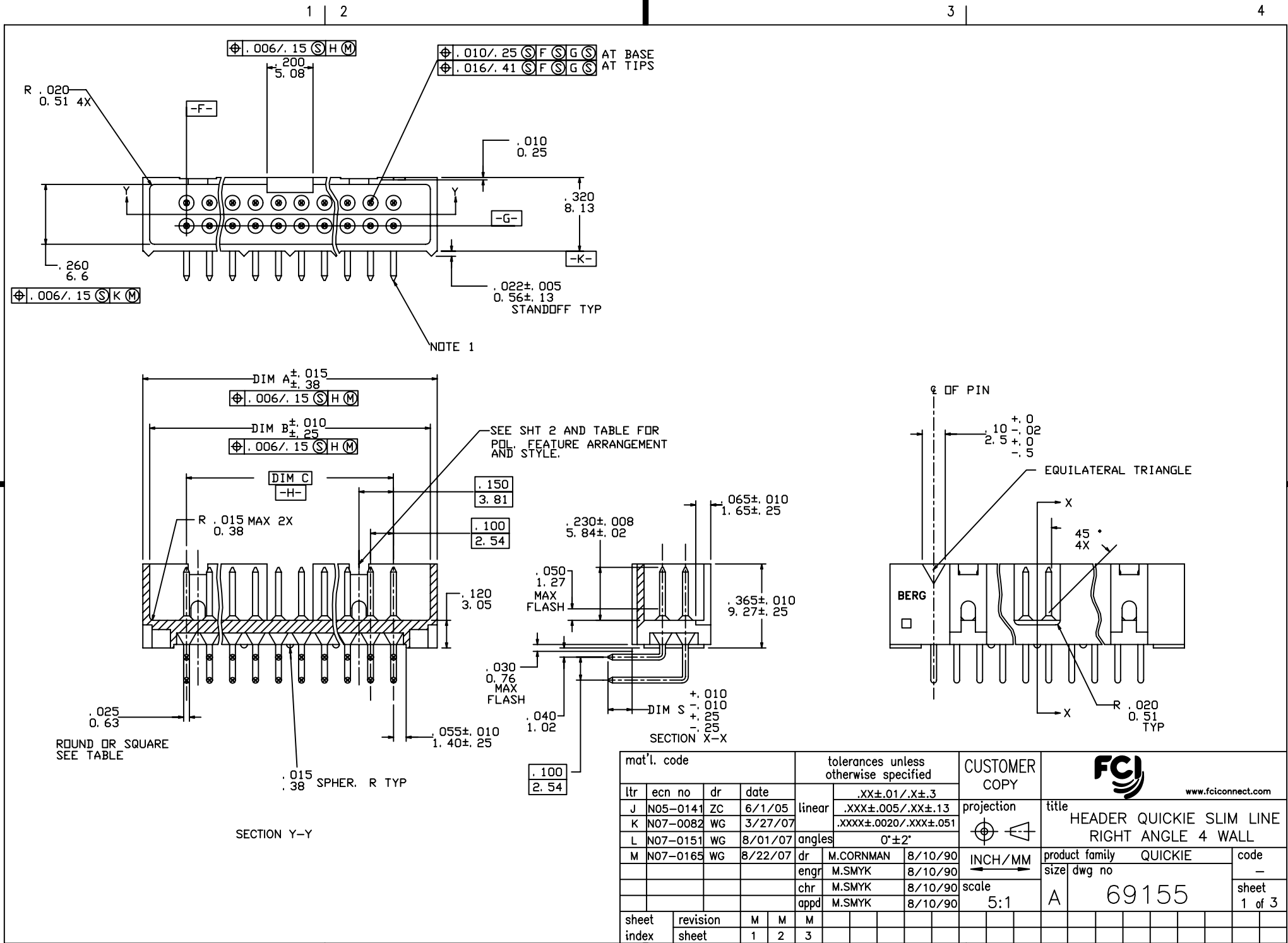


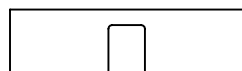
Tous droits strictement reserves. Reproduction ou communication a des tiers interdite sous quelque forme que ce soit sans autorisation ecrite du proprietaire. Propriete de c FCI. Droits de reproduction FCI.



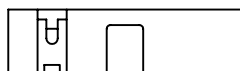
All rights strictly reserved. Reproduction or issue to third parties in any form whatever is not permitted without written authority from the proprietor. Property of FCI. Copyright FCI.



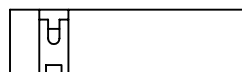
mat'l. code				tolerances unless otherwise specified			CUSTOMER COPY		FCI www.fciconnect.com	
ltr	ecn no	dr	date	linear	.XX±.01/.X±.3		projection	title		
J	N05-0141	ZC	6/1/05		.XXX±.005/.XX±.13			HEADER QUICKIE SLIM LINE		
K	N07-0082	WG	3/27/07	angles	.XXX±.0020/.XXX±.051		INCH/MM	RIGHT ANGLE 4 WALL		
L	N07-0151	WG	8/01/07		0'±2'			product family QUICKIE		
M	N07-0165	WG	8/22/07	dr	M.CORNMAN	8/10/90	scale	size		code
				enr	M.SMYK	8/10/90		5:1	dwg no	
				chr	M.SMYK	8/10/90	A		1 of 3	
				appd	M.SMYK	8/10/90				
sheet index	revision sheet	M	M	M						
		1	2	3						



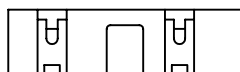
2 X 5
STYLE A



2 X 7
STYLE C



2 X 5
STYLE B



2 X 8 THUR 2 X 30
STYLE D

KEY FOR PLATING AND TAIL LENGTH AND TYPE			
X	TERMINAL PLATING (NOTE 10)	DIM S	TERMINAL TYPE
-0XX(LF)	30u" / .76u Au OVER 50u" / 1.27u Ni	.105/2.67	RD
-1XX(LF)	30u" / .76 GXT GOLD FLASH	.105/2.67	RD
-2XX(LF)	30u" / .76u Au OVER 50u" / 1.27u Ni	.150/3.81	RD
-3XX(LF)	30u" / .76 GXT GOLD FLASH	.150/3.81	RD
-4XX(LF)	30u" / .76u Au OVER 50u" / 1.27u Ni	.105/2.67	SQ
-5XX(LF)	30u" / .76 GXT GOLD FLASH	.105/2.67	SQ
-6XX(LF)	30u" / .76u Au OVER 50u" / 1.27u Ni	.150/3.81	SQ
-7XX(LF)	30u" / .76 GXT GOLD FLASH	.150/3.81	SQ
-8XX(LF)	15u" / .38u Au OVER 50u" / 1.27u Ni	.150/3.81	SQ
-9XX(LF)	15u" / .38u Au OVER 50u" / 1.27u Ni	.105/2.67	SQ

NOTES

- ① SAME PIN POSITION TOLERANCE APPLIES TO BOTH ENDS OF EACH TERMINAL.
- ② MOLDING MAT'L; 30% GLASS-FILLED POLYESTER, FLAME RETARDANT PER UL 94-V0, COLOR; BLUE.
3. 1* MAX DRAFT PERMISSIBLE ON ALL SURFACES.
4. 1.8 KILOGRAMS/4 POUNDS MIN. TERM. PULL-OUT FORCE.
5. TERMINAL MAT'L: PHOSPHOR BRONZE.
- ⑥ A. PART NUMBERS HAVING AN "R" FOLLOWING THE 8 DIGIT P/N (EXAMPLE 69155-010 R) HAVE A RETENTION FEATURE. LOCATION IS MANUFACTURER'S OPTION.
- B. CONNECTORS WITH RETENTION AND ROUND PINS HAVE 15LB/6.8KG MAX INSERTION AND .25LB/.11KG MIN RETENTION FORCE WHEN USED IN A .035/.89±.003/.08 DIA HOLE AND .062/1.58 THICK PCB BOARD
- C. CONNECTORS WITH RETENTION AND SQUARE PINS HAVE A 15LB/6.8KG MAX INSERTION AND A .5LB/.23KG MIN RETENTION WHEN USED IN A .040/1.02±.003/.08 DIA HOLE AND A .062/1.58 THICK PCB BOARD.
- ⑦ DIMENSION "A" FOR -034 HAS A MAXIMUM SIZE OF 1.990/50.6
8. 69155-***LF IS JUST A LEAD FREE PRODUCT.
9. THE HOUSING OF XXXXX-XYLFF WILL WITHSTAND EXPOSURE TO 260°C PEAK TEMPERATURE FOR 10 SECONDS IN A WAVE SOLDER PROCESS.
10. PLATING OPTION: MAYBE EITHER GOLD OR GXT PLATING AT MANUFACTURER'S OPTION
11. FOR 69155-150LF, THE TOLERANCE OF DIM "S" IS " -0.10, +0.35 "

Tous droits strictement reserves. Reproduction ou communication a des tiers interdite sous quelque forme que ce soit sans autorisation ecrite du proprietaire. Propriete de c FCI. Droits de reproduction FCI.



All rights strictly reserved. Reproduction or issue to third parties in any form whatever is not permitted without written authority from the proprietor. Property of FCI. Copyright FCI.

mat'l. code				tolerances unless otherwise specified		CUSTOMER COPY	www.fciconnect.com	
ltr	ecn no	dr	date	linear	.XX±.01/.X±.3	projection		
M					.XXX±.005/.XX±.13		title	
				angles	.XXX±.0020/.XXX±.051		0°±2°	HEADER QUICKIE SLIM LINE RIGHT ANGLE 4 WALL
				dr	M.CORNMAN 8/10/90	INCH/MM	product family	
				engr	M.SMYK 8/10/90		QUICKIE	code
				chr	M.SMYK 8/10/90	scale	size	
				appd	M.SMYK 8/10/90		5:1	dwg no
sheet index	revision sheet					A	69155	sheet 2 of

Tous droits strictement reserves. Reproduction ou communication a des tiers interdite sous quelque forme que ce soit sans autorisation ecrite du proprietaire. Propriete de c FCI. Droits de reproduction FCI.



All rights strictly reserved. Reproduction or issue to third parties in any form whatever is not permitted without written authority from the proprietor. Property of FCI. Copyright FCI.

1 | 2

3 |

4

PRODUCT NO NOTE 6	POS	DIM A	DIM B	DIM C	STYLE
69155-X02(LF)	2X5	. 78/19. 8	. 72/18. 3	. 400/10. 16	B
-X10(LF)	2X5	. 78/19. 8	. 72/18. 3	. 400/10. 16	A
-X14(LF)	2X7	. 98/24. 9	. 92/23. 4	. 600/15. 24	C
-X16(LF)	2X8	1. 08/27. 9	1. 02/25. 9	. 700/17. 78	D
-X20(LF)	2X10	1. 28/32. 5	1. 22/31. 0	. 900/22. 86	↑
-X24(LF)	2X12	1. 48/37. 6	1. 42/36. 1	1. 100/27. 94	
-X26(LF)	2X13	1. 58/40. 1	1. 52/38. 6	1. 200/30. 48	
-X30(LF)	2X15	1. 78/45. 2	1. 72/43. 7	1. 400/35. 56	
-X34(LF)	2X17	1. 98/50. 3	1. 92/48. 8	1. 600/40. 64	
-X40(LF)	2X20	2. 28/57. 9	2. 22/56. 4	1. 900/48. 26	
-X44(LF)	2X22	2. 48/63. 0	2. 42/61. 5	2. 100/53. 34	
-X50(LF)	2X25	2. 78/70. 6	2. 72/69. 1	2. 400/60. 96	↓
69155-X60(LF)	2X30	3. 28/83. 3	3. 22/81. 8	2. 900/73. 66	D

NOTE 7

NOTE 11

mat'l. code				tolerances unless otherwise specified			CUSTOMER COPY		 www.fciconnect.com			
ltr	ecn no	dr	date	linear	.XX±.01 / .X±.3		projection	 title HEADER QUICKIE SLIM LINE RIGHT ANGLE 4 WALL				
M					.XXX±.005 / .XX±.13							
				angles	0'±2'		 INCH/MM	product family		code		
				dr	M.CORNMAN	8/10/90		scale	QUICKIE		-	
				enr	M.SMYK	8/10/90	5:1		size dwg no		sheet	
				chr	M.SMYK	8/10/90			A		69155	3 of
				appd	M.SMYK	8/10/90						
sheet index	revision sheet											

PDM: Rev:M

STATUS Released

Printed: Apr 12, 2011

1

2

3

4

X-ON Electronics

Largest Supplier of Electrical and Electronic Components

Click to view similar products for [Amphenol manufacturer](#):

Other Similar products are found below :

[PT01SE-16-8P\(027\)](#) [PT01SE-16-8P\(476\)](#) [CTV06RW-11-2JB-LC](#) [97-3108A-22-14P](#) [10-474017-10P](#) [MS27473P14B18S](#) [TV06RW-25-90AE](#)
[CTVS06RF-25-46PB-LC](#) [PT02E10-2PW](#) [PT02E10-2PX](#) [97-3106A18-3PX-958](#) [97-3106A18-3PY-958](#) [PT06J20-24SW](#) [TV06RL-13-35AD](#)
[TV06RL-13-98BD](#) [TV06RW-25-46AE](#) [TV06RL-13-35SD-LC](#) [TV06RL-13-35SD](#) [TV06RL-13-98SD-LC](#) [TV06RL-13-98SD](#) [TVP00RW-23-](#)
[53AD](#) [PT02E10-2PW-025](#) [100-007-213-002-001](#) [2M805-002-16NF23-12PA](#) [97-3108B16S-5PW-417](#) [97-3108B16S-5PY-417](#) [CS-](#)
[DSDMDB37MF-025](#) [97-3108B16S-5PZ-417](#) [GTC02R32-17S-025-RDS](#) [PT06SE2041P](#) [CF-5A9013-04N](#) [CF-6A4615-06N](#) [GTC02R32-17S-](#)
[025-RDS-LC](#) [GTC02R32-17S-025-LC](#) [PT06SE-24-61P\(LC\)](#) [SP28W1F](#) [TV07DT-25-37P](#) [TV07DT-25-37JN-LC](#) [TV07DT-25-37S](#) [TV07DT-](#)
[25-37S-LC](#) [TV07DT-25-46P-LC](#) [97-3101A20-21P-958](#) [TV07DT-25-90P-LC](#) [TV07DT-25-46A](#) [TV07DT-25-37P-LC](#) [GTS08-36-22PZ-025-](#)
[B30](#) [PT00SP2241P](#) [CTVPS00RF-15-15AC](#) [LJT06RT-15-35PB\(023\)](#) [TVS07RF-15-15AB](#)