

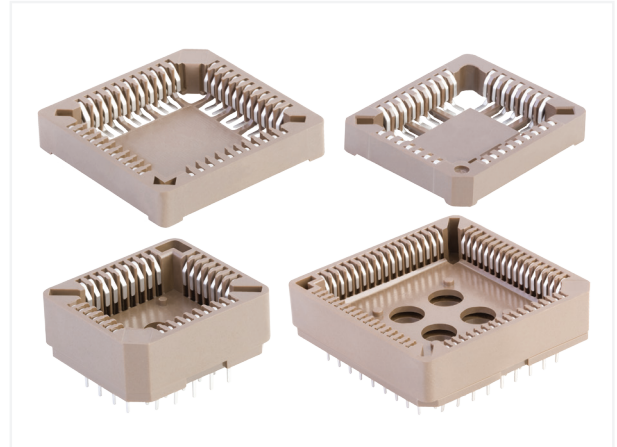
PLCC SOCKET

OVERVIEW

Plastic Leaded Chip Carrier (PLCC) is a low profile, thin four-wall socket built in a plastic housing used to encase integrated circuit chips.

Available in surface mount (SMT) and through-hole (THT) versions, the PLCC is designed with the standard “J”-leads. The lead counts range in 32 and 44 positions for the SMT and 32, 44 and 68 positions for the THT version. The standard pin spacing of 1.27mm on the PLCC is designed for standard chips which has the same spacing size.

PLCC is suitable for use in a variety of device types, including memory, processors, controllers and particularly common for read-only memories as it provides an easily swappable socketed chip. Applications range from consumer products through automotive and aerospace.



FEATURES

- SMT and THT soldering options available
- 32 and 44 positions available for SMT type
- 32, 44 and 68 positions available for THT type
- Plastic standoff
- Top contact slots
- Dedicated extraction tool
- High normal force contacts
- RoHS compliant and lead-free

BENEFITS

- Suitable for multiple applications
- Provide outlet for heat dissipation and allow cleaning maintenance
- Allow test probing with PLCC socket in place
- Easy removal of PLCC in housing slot, minimizing potential damage
- Prevent fretting corrosion
- Meets environmental, health and safety requirements

TECHNICAL INFORMATION

MATERIALS

- Housing: High temperature thermoplastic, Brown
- Contact: Copper Alloy with Tin plating

ELECTRICAL PERFORMANCE

- Low Level Contact Resistance: 20mΩ max.
- Insulation Resistance: 10,000MΩ min.
- Voltage Rating for SMT Type: 20V AC/DC
- Voltage Rating for THT Type: 250V AC/DC
- Current Rating: 1A
- Dielectric Withstand Voltage: 600VAC

ENVIRONMENTAL

- Operating Temperature: -55°C~+125°C

SPECIFICATIONS

- SMT Type
 - Product Specifications: GS-12-158
 - Package Specifications: on drawing
- THT Type
 - Product Specifications: GS-12-054
 - Package Specifications: on drawing

MECHANICAL PERFORMANCE

- SMT Type
 - Mating Force:
 - 10 ounces max. per contact
 - Unmating Force:
 - 0.5 ounces min. per contact
 - Durability: 25 mating cycles
- THT Type
 - Mating Force:
 - 32 positions: 15kg max.
 - 44 positions: 19kg max.
 - 68 positions: 26kg max.
 - Unmating Force:
 - 32 positions: 1.5kg max.
 - 44 positions: 2.0kg max.
 - 68 positions: 4.0kg max.
 - Durability: 25 mating cycles

PACKAGING

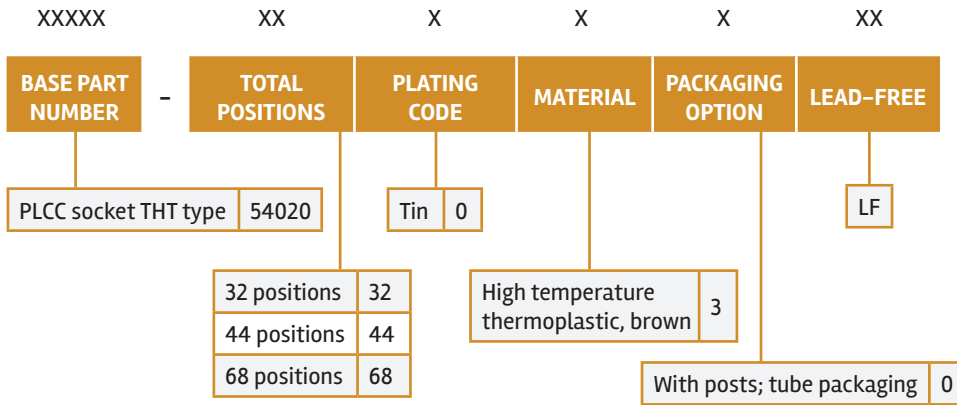
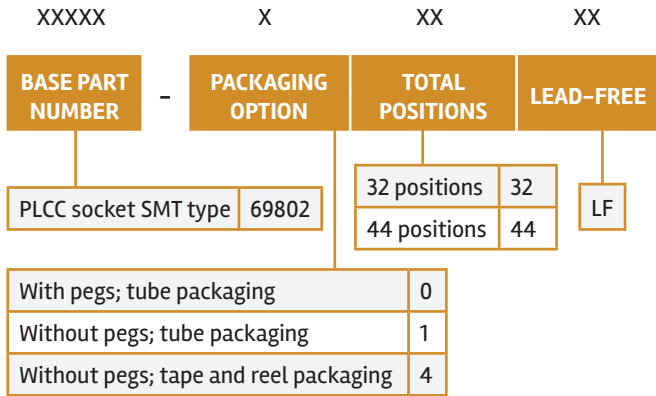
- Tube
- Tape and Reel

TARGET MARKETS/APPLICATIONS

- Consumer
 - Desktop
- Data
 - Programming Equipment
- Industrial & Instrumentation
 - HVAC System
 - Gaming Device
 - Lighting
 - Measurement Equipment
 - Security
 - Test
 - Vending Machine
- Medical



PART NUMBER SELECTOR



BWBPLCCSOCK0615EA4

X-ON Electronics

Largest Supplier of Electrical and Electronic Components

Click to view similar products for [IC & Component Sockets](#) category:

Click to view products by [Amphenol](#) manufacturer:

Other Similar products are found below :

[0066-3-17-15-30-14-02-0](#) [670](#) [672](#) [673](#) [712-93-120-41-001000](#) [714-93-104-31-018000](#) [8059-4G1-LF](#) [807-22-001-10-001101](#) [807-22-001-10-006101](#) [807-22-001-30-011101](#) [807-22-001-30-012101](#) [807-22-001-30-013101](#) [807-22-001-30-014101](#) [8-1437531-4](#) [8150-6P10](#) [833-93-034-10-001000](#) [851-41-006-10-001000](#) [851-43-008-20-001000](#) [851-43-014-20-001000](#) [851-93-006-20-001000](#) [851-93-010-20-001000](#) [853-43-020-10-001000](#) [86.010.0053.0](#) [116-43-308-41-007000](#) [PX-68LCC](#) [121-13-318-41-001000](#) [121-13-320-41-001000](#) [121-13-308-41-001000](#) [123-43-314-41-801000](#) [123-43-420-41-001000](#) [123-87-320-41-001101](#) [122-13-316-41-001000](#) [123-13-624-41-001000](#) [123-43-306-41-001000](#) [12-3513-11](#) [123-91-320-41-001000](#) [126-43-310-41-002000](#) [AKSUN 37V-T](#) [1437503-9](#) [1437504-1](#) [146-44-308-41-013000](#) [APO-320-G-T](#) [146-43-308-41-012000](#) [160-10-308-00-001000](#) [160-40-320-00-001000](#) [214-99-306-01-670800](#) [232-1270-02-0602](#) [2-382761-4](#) [2-5331677-4](#) [2-640360-3](#)