

PRODUCT NUMBER

73347-Y04LF

PLATING _____ ROHS COMPATIBLE, SEE NOTE 5

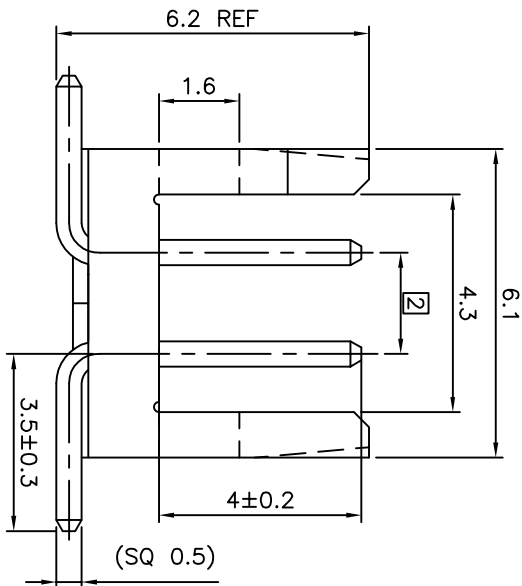
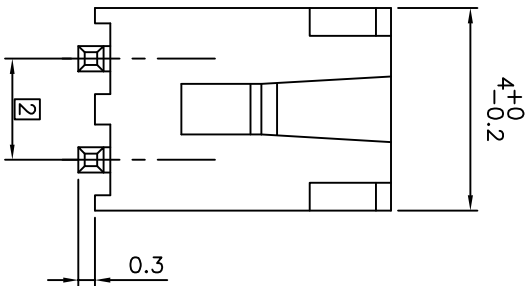
1XX = 0.76µm GOLD/GXT ON CONTACT AREA
2µm MIN MATT TIN ON TAIL

7XXLF = 0.76µm GOLD/GXT FULL PLATED
OVER 1.27µm Ni MIN

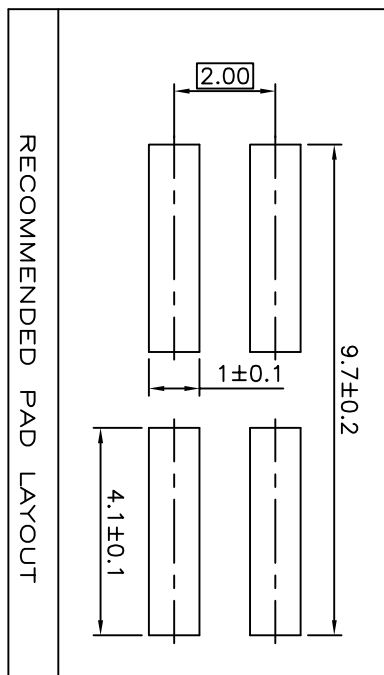
1.27µm MINIMUM NICKEL UNDERPLATE

NOTES :

1. MATERIAL HOUSING: HIGH TEMP. THERMOPLASTIC
UL 94V-0, COLOR CREAM
 2. MATERIAL TERMINAL: COPPER ALLOY
 3. 7N MIN. PIN RETENTION IN EITHER DIRECTION.
 4. STANDARD PACKAGING IN POLYBAGS:
 5. ROHS COMPATIBLE PRODUCT SPECIFICATIONS
 - d - PLATING:
 - "LF" MEANS THE PRODUCT IS LEAD-FREE,
2µm MINIMUM MATTE TIN OVER 1.27µm
MINIMUM NICKEL UNDERPLATE.
 - b - MANUFACTURING PROCESS COMPATIBILITY
 - THE HOUSING WILL WITHSTAND EXPOSURE TO
260°C PEAK TEMPERATURE FOR 30 SECONDS
MAX IN A CONVECTION, INFRA-RED OR VAPOR
PHASE OR REFLOW OVEN.
 - c - LABELLING:
 - MEETS PACKAGING SPECS AS PER GS-14-920
 - d - THIS PRODUCT MEETS EUROPEAN DIRECTIVES
AND OTHER COUNTRY REGULATIONS AS DISCRIBED
IN GS-47-0004.
6. PIN POS 1 RECOMMENDED ON THIS SIDE TO MATCH WITH
HOUSING CODING.



NOTE 6



RECOMMENDED PAD LAYOUT

mat'l. code	SEE NOTES	surface	tolerance	projection	product
ltr	ecn no	dr	date	ISO 1302	family
K	B-19190	LMU	14.10.24	tolerances unless otherwise specified	MINITEK HEADER
E	F06-0268	LMU	06.08.09	linear	MINITEK
F	F07-0191	JCO	07.09.05	JCOMPAGNON	HEADER
G	F08-0143	EIA	15.04.08	engr	2x2
H	F11-0078	LMU	11.06.29	chr	
J	F12-0018	JCO	12.02.27	qppd	
sheet	revision	JMC	98.03.20	scale 6:1	FCI
index	sheet				dwg no
					73347
					sheet 1 of 1
					size
					A3
					CUSTOMER Drawing

X-ON Electronics

Largest Supplier of Electrical and Electronic Components

Click to view similar products for [Headers & Wire Housings](#) category:

Click to view products by [Amphenol](#) manufacturer:

Other Similar products are found below :

[95000-104TRLF](#) [10135584-644402LF](#) [DF62W-EP2022PCA](#) [95000-106TRLF](#) [DF62W-2022SCA](#) [DF62W-EP2022PC](#) [2203348](#) [DF62W-2022SC](#) [1084018](#) [1029039](#) [1084017](#) [802-10-012-10-002000](#) [1112640](#) [1112639](#) [891-007-9SS-BST1T](#) [000-34000](#) [0008550134](#) [0009482033](#) [0009507031](#) [57102-F02-18ULF](#) [57102-S06-03LF](#) [57202-S52-04LF](#) [PCN6-15S-2.5E](#) [0039019024](#) [58102-G61-06LF](#) [582553-1](#) [0009485154](#) [0009508121](#) [0022285053](#) [0050291907](#) [018731A](#) [LY20-4P-DT1-P1E-BR](#) [02.125.8002.8](#) [60101931](#) [60598-1 \(Cut Strip\)](#) [M1625-3R/100](#) [61062-3](#) [61082-181009](#) [CSU011177004](#) [636-1427](#) [638009-1](#) [641938-9](#) [641991-4](#) [644168-1](#) [644827-2](#) [647662-1](#) [65039-019ELF](#) [65692-001LF](#) [65781-018](#) [65781-047](#)