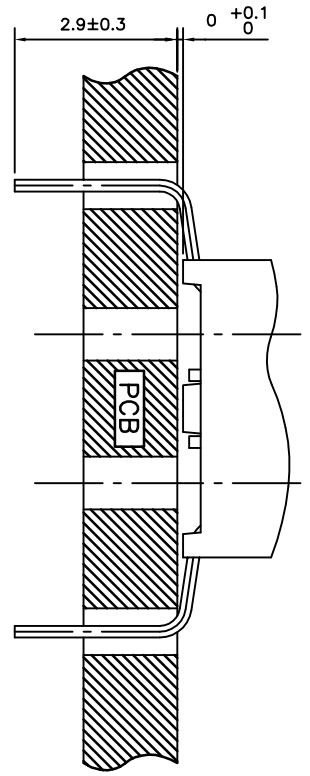
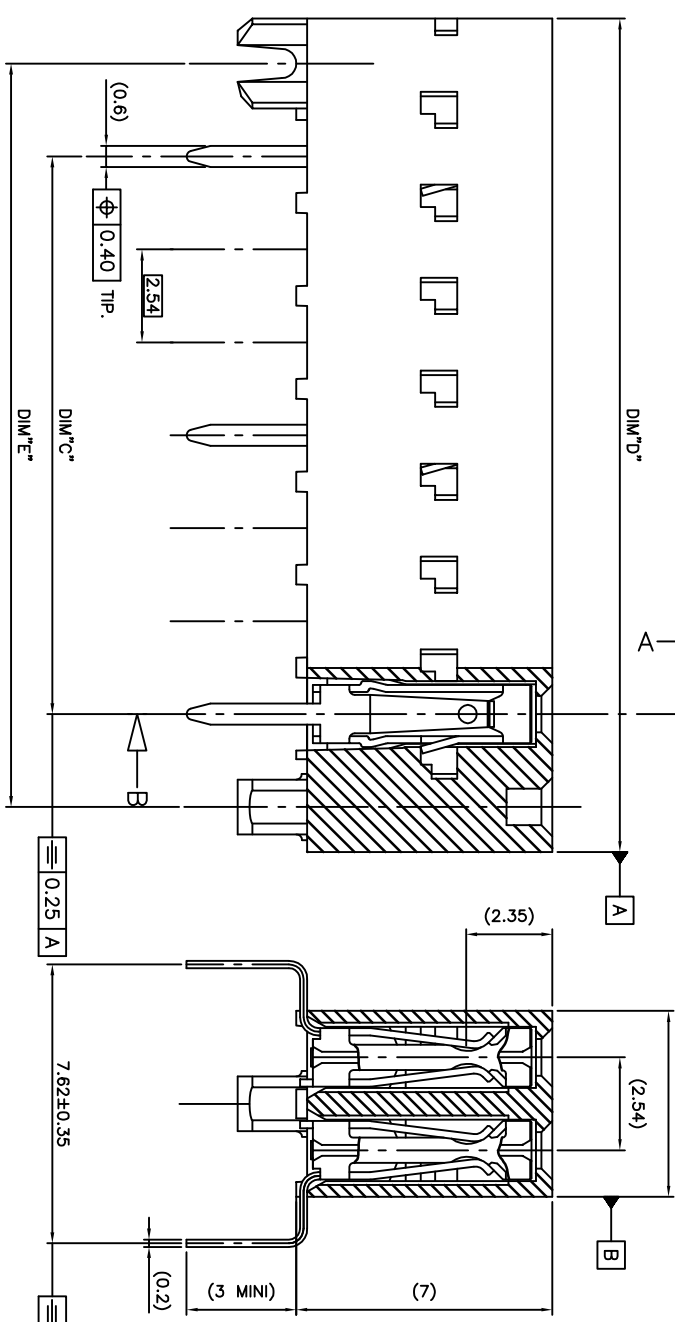
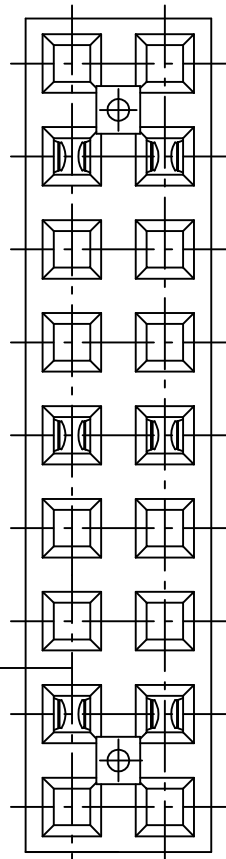


PRODUCT N°	DIM"C"	DIM"D"	DIM"E"	X = Contact in Cavity (positions with locating pegs excluded)																			
73375-301LF	15.24	22.78	20.32	X					X												X		
73375-302LF	48.26	55.80	53.34	X	X									X	X	X	X	X	X	X	X	X	

ROHS COMPATIBLE, SEE NOTE 4



NOTES:

- 1 - MATERIAL HOUSING: PCT 30% GLASS FILLED COLOUR GREY, HIGH TEMPERATURE FLAME RETARDANT PER UL-94 CATEGORY VO. COMPATIBLE WITH INFRARED SOLDERING.
- 2 - MATERIAL TERMINAL: PHOSPHOR BRONZE EXTRA HARD.
- 3 - RECOMMENDED APPLICATION DATA:
 A - RECOMMENDED HOLE PATTERN SHOWN IN SHEET 2.
 B - ALL MATING PINS TO BE 0.64 mm SQUARE ON TRUE CENTER OF GIVEN TERMINAL SPACING WITHIN 0.38 mm DIAM.
 C - SUGGESTED MATING PIN LENGTH: BOTTOM ENTRY 7.3 min TOP ENTRY 3.3 min
 D - RECOMMENDED PC BOARD THICKNESS 1.6 mm.
- 4 - ROHS COMPATIBLE PRODUCT SPECIFICATIONS
- a - LABELING:
 - MEETS PACKAGING SPECS AS PER GS-14-920
 - LEGAL STATEMENT: SEE GS-47-0004
- b - MANUFACTURING PROCESS COMPATIBILITY
 - THE HOUSING WILL WITHSTAND EXPOSURE TO 260°C ±5°C SOLDER BATH TEMPERATURE FOR 5 SECONDS IN A WAVE SOLDER APPLICATION WITH A 1.6mm MIN THICK CIRCUIT BOARD.
- c - PLATING:
 - "L" MEANS THE PRODUCT IS LEAD-FREE, 2µm MINIMUM MATTE TIN OVER 1.27µm MINIMUM NICKEL UNDERPLATE.
- d - PLATING:
 - THE HOUSING WILL WITHSTAND EXPOSURE TO 260°C ±5°C SOLDER BATH TEMPERATURE FOR 5 SECONDS IN A WAVE SOLDER APPLICATION WITH A 1.6mm MIN THICK CIRCUIT BOARD.

73375-7XXLF	2 µm GOLD	3.81µm Sn
73375-4XXLF	5µm Sn	3.81µm Sn
73375-3XXLF	0.75 µm GOLD	3.81µm Sn
PLATING CODE	CONTACT AREA	SOLDER TAIL
PLATING EXPLANATION		

SECTION B-B

SECTION A-A

mat'l. code	surface	tolerance	projection	product family
SEE NOTES				
Ltr	ecr no	dr	date	revision
H	B-19123	LNU	14.10.21	
C	FO4-0118	DE	04.01.26	
D	FO4-0347	DE	04.11.09	
E	FO6-0157	DE	06.02.27	
F	FO6-0204	DE	06.06.20	
G	FO6-0324	DE	06.11.21	
index sheet 1 2				

DUAL ENTRY
EXT.LOC/SELECT.LOADED
73375
sheet 1 of 2
size Az

A

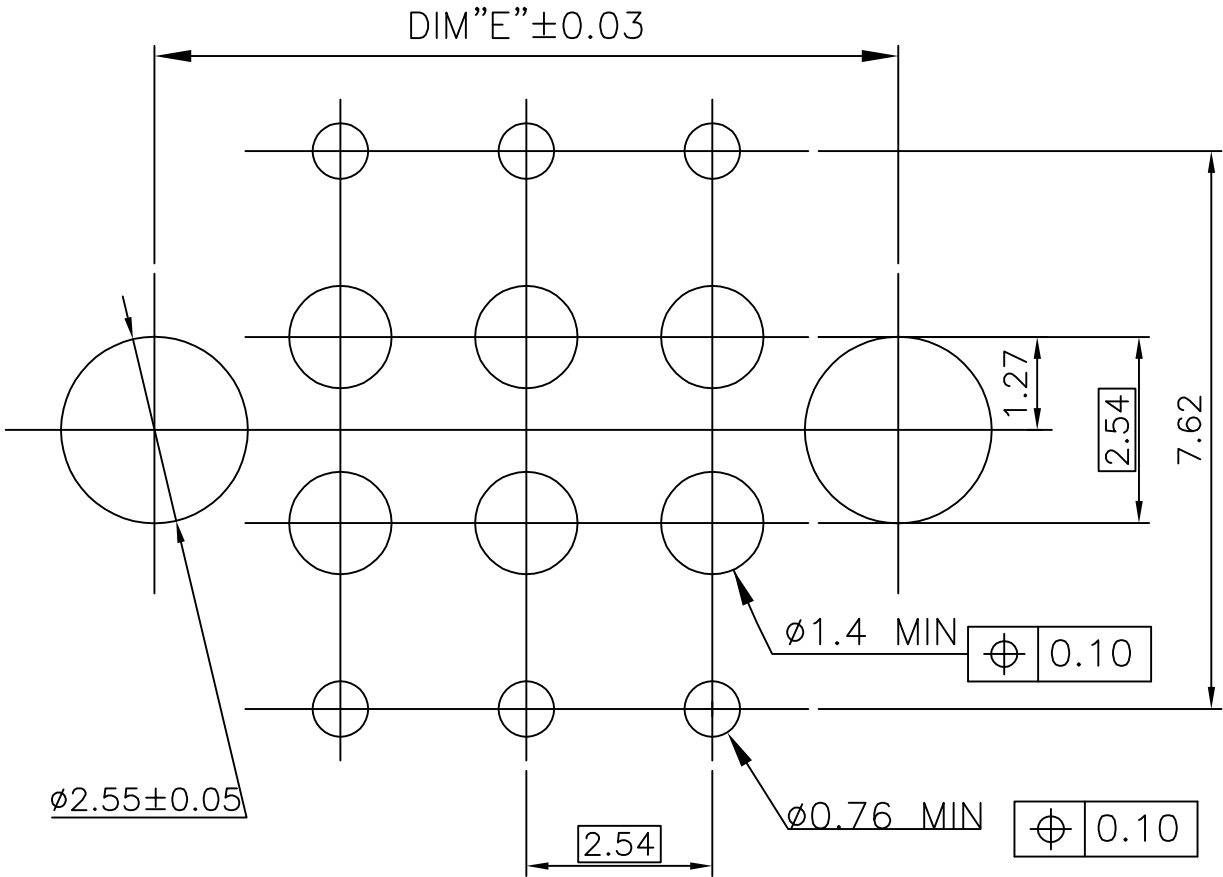
A

B

B

C

C



FCIconnect.com

Copyright FCI

mat'l. code SEE NOTES				surface ISO 1302 ✓		tolerance ISO 406 ISO 1101		projection 		product family DX VCC DR			
ltr	ecn no	dr	date	tolerances unless otherwise specified		±0.3		mm 		title DUAL ENTRY EXT.LOC/SELECT.LOADED			
A	F04-0347	DLE	04.11.09	angles linear			scale 10:1		dwg no		sheet 2 of -	size	
B	F06-0204	DLE	06.06.20		±2'				73375			A4	
				dr	D.LEGRAND	04.11.09			type		Drawing		
				enr	P.NIZZI	04.11.09			CUSTOMER				
				chr	D.LEGRAND	04.11.09							
				appd	P.NIZZI	04.11.09							
sheet index	revision sheet												

X-ON Electronics

Largest Supplier of Electrical and Electronic Components

Click to view similar products for [Headers & Wire Housings](#) category:

Click to view products by [Amphenol](#) manufacturer:

Other Similar products are found below :

[892-18-020-10-001101](#) [58102-G61-06LF](#) [582553-1](#) [0009485154](#) [009176003701906](#) [0050291907](#) [LY20-4P-DT1-P1E-BR](#) [02.125.8002.8](#)
[609-3404](#) [61062-3](#) [622-0430](#) [622-3653LF](#) [63453-116](#) [636-1030](#) [636-1427](#) [636-3427](#) [636-4007](#) [641938-9](#) [641991-4](#) [644827-2](#) [65817-010LF](#)
[65817-015LF](#) [65863-015LF](#) [66207-023LF](#) [67095-007LF](#) [67601157](#) [68648-049](#) [70.362.1628.0](#) [70-4210](#) [70-4226B](#) [70-4853B](#) [707-5020](#) [707-](#)
[5028](#) [71.350.2428.0](#) [71918-208LF](#) [71961-016LF](#) [733-134](#) [733-162](#) [754199-000](#) [760-3052](#) [787-8014-00](#) [79531-3000](#) [FCN-360C032-B](#) [FCN-](#)
[367T-T012/H](#) [FCN-723D010/2](#) [80.063.4001.1](#) [800-90-001-10-001000](#) [800-90-010-10-002000](#) [801-43-002-10-013000](#) [801-43-006-10-002000](#)