



Copyright FCI



FCIconnect.com



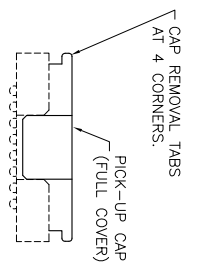
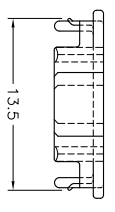
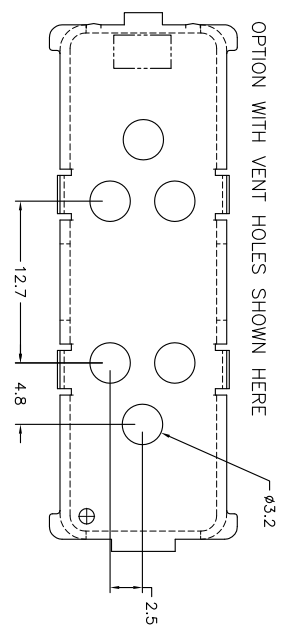
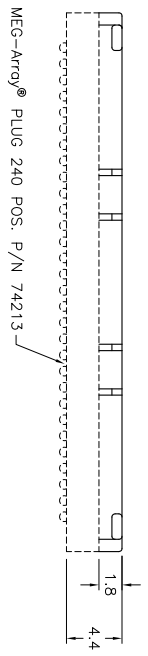
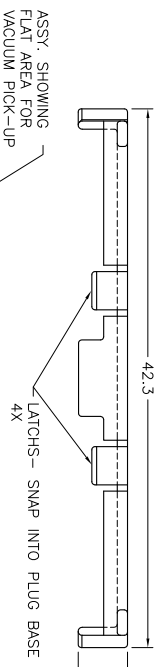
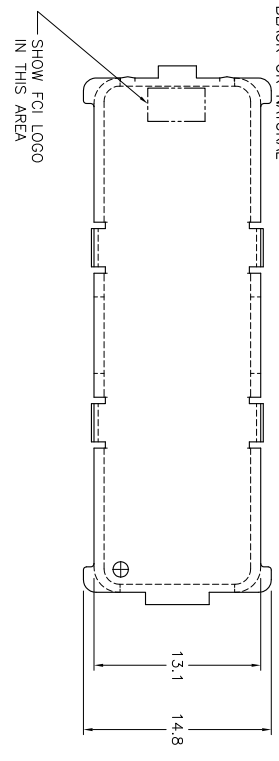
3 |



4

PRODUCT NUMBER	COMMENTS	DESCRIPTION
74440-001	MIN. ORDER QTY. IS 500 PCS.	STANDARD - HAS NO VENT HOLES
74440-002	MIN. ORDER QTY. IS 500 PCS.	SPECIAL - HAS 6 VENT HOLES

NOTE: COLOR WILL BE EITHER BLACK OR NATURAL



mat'l code		2 1 3		surface		ASME Y14.5		tolerance		ASME Y14.5		projection		product family	
ltr	ecn no.	dr	date	ASME Y14.5	ASME Y14.5	ASME Y14.5	ASME Y14.5	ASME Y14.5	ASME Y14.5	ASME Y14.5	ASME Y14.5	ASME Y14.5	ASME Y14.5	ASME Y14.5	ASME Y14.5
A	V81023	DRW	7.9.98	ASME Y14.5	ASME Y14.5	ASME Y14.5	ASME Y14.5	ASME Y14.5	ASME Y14.5	ASME Y14.5	ASME Y14.5	ASME Y14.5	ASME Y14.5	ASME Y14.5	ASME Y14.5
B	V01409	HLJ	11.16.00	ASME Y14.5	ASME Y14.5	ASME Y14.5	ASME Y14.5	ASME Y14.5	ASME Y14.5	ASME Y14.5	ASME Y14.5	ASME Y14.5	ASME Y14.5	ASME Y14.5	ASME Y14.5
C	V20288	DAI	8.20.02	ASME Y14.5	ASME Y14.5	ASME Y14.5	ASME Y14.5	ASME Y14.5	ASME Y14.5	ASME Y14.5	ASME Y14.5	ASME Y14.5	ASME Y14.5	ASME Y14.5	ASME Y14.5
D	V06-0698	LP	2006/07/28	ASME Y14.5	ASME Y14.5	ASME Y14.5	ASME Y14.5	ASME Y14.5	ASME Y14.5	ASME Y14.5	ASME Y14.5	ASME Y14.5	ASME Y14.5	ASME Y14.5	ASME Y14.5
E	V-010427	DGH	2012/04/08	ASME Y14.5	ASME Y14.5	ASME Y14.5	ASME Y14.5	ASME Y14.5	ASME Y14.5	ASME Y14.5	ASME Y14.5	ASME Y14.5	ASME Y14.5	ASME Y14.5	ASME Y14.5
F	V-17558	DGH	2014/4/23	ASME Y14.5	ASME Y14.5	ASME Y14.5	ASME Y14.5	ASME Y14.5	ASME Y14.5	ASME Y14.5	ASME Y14.5	ASME Y14.5	ASME Y14.5	ASME Y14.5	ASME Y14.5
sheet	revision	F		ASME Y14.5	ASME Y14.5	ASME Y14.5	ASME Y14.5	ASME Y14.5	ASME Y14.5	ASME Y14.5	ASME Y14.5	ASME Y14.5	ASME Y14.5	ASME Y14.5	ASME Y14.5
index	sheet	1		ASME Y14.5	ASME Y14.5	ASME Y14.5	ASME Y14.5	ASME Y14.5	ASME Y14.5	ASME Y14.5	ASME Y14.5	ASME Y14.5	ASME Y14.5	ASME Y14.5	ASME Y14.5



MEG-Array
 PICK-UP CAP
 240 POS. PLUG
 sheet 1 of 1
 size A4
 CUSTOMER Drawing

X-ON Electronics

Largest Supplier of Electrical and Electronic Components

Click to view similar products for [Board to Board & Mezzanine Connectors](#) category:

Click to view products by [Amphenol](#) manufacturer:

Other Similar products are found below :

[589158040000018](#) [MDF7C-18P-2.54DSA\(55\)](#) [FCN-230C068-11](#) [FCN-268F012-G/BD](#) [FCN-268F036-G/BD](#) [FCN-268M012-G/0D](#) [FCN-268M024-G/1D](#) [FCN-723J004/1](#) [MIS-048-01-F-D-DP-K](#) [832-10-034-10-001000](#) [FX4C-80S-1.27DSA](#) [FCN-214Q030-G/0](#) [FCN-234P048-G/0](#) [FCN-235D050-G/C](#) [210-93-314-41-105000](#) [2-22603-0](#) [MDF7-40DP-2.54DSA\(55\)](#) [AXG720047](#) [MIT-114-03-F-D-K](#) [55323-1519](#) [DF33-2P-3.3DSA\(24\)](#) [YFT-20-05-H-03-SB-K](#) [503308-3040](#) [026-6203-PDB](#) [027-6203-PDB](#) [069159702701000](#) [10123981-102LF](#) [101A10019X](#) [55650-0588-C](#) [68682-310LF](#) [68684-306](#) [75140-7012](#) [87471-650](#) [YTW-30-07-H-Q-410-140](#) [FCN-268F024-G0D](#) [10124054-515LF](#) [68685-603](#) [8-1616154-3](#) [MIS-019-01-F-D](#) [FCN-268M024-G/3D](#) [FCN-268M036-G/BD](#) [20021832-06016C1LF](#) [KX15-20KLDL-E1000E](#) [AXE810124](#) [FCN-214J100-G/0](#) [FCN-230C068-E/S](#) [AXE812124](#) [AXE816124](#) [AXE720127](#) [354184](#)