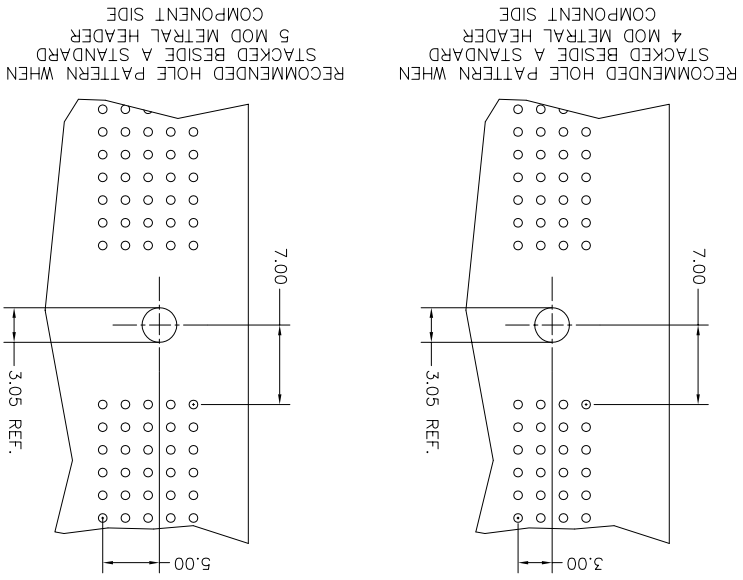
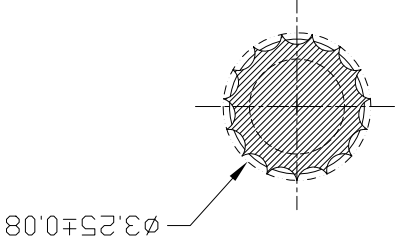
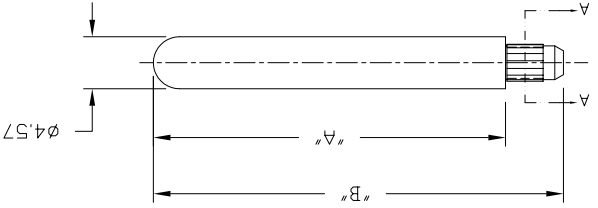


| DIMENSIONS | PRODUCT NUMBER | | |
|------------|----------------|-----------|-------|
| | "A" | 74748-101 | 31.00 |
| "B" | 74748-102 | 20.02 | |
| | | | 25.12 |



NOTES:

1. MATERIAL: STAINLESS STEEL, TYPE 303. FINISH: PASSVATED.
2. THIS GUIDE PIN IS INTENDED TO BE INSERTED INTO A 3.05±.08 NONPLATED THROUGH HOLE.
3. SHORT GUIDE PINS TO BE USED WHEN A PCB STIFFENER IS PRESENT ON BOARD.
4. THIS GUIDE PIN IS TO BE USED WITH RECEPTACLE P/N 88917 FOR A 4 ROW APPLICATION, AND P/N 73474 FOR A 5 ROW APPLICATION.
5. PART NUMBERS WIT "LF" SUFFIX AT THE END ARE LEAD FREE OPTION.
6. THIS PRODUCT MEETS EUROPEAN UNION AS DIRECTIVES AND OTHER COUNTRY REGULATION AS DESCRIBED IN GS-22-008.



| | | | | | |
|------------------------|---------------------------------------|---------------------|------------|---------------------|------------|
| mat'l. code | surface | tolerance | projection | product family | METRAL ACC |
| SEE NOTE 1 | ISO 1302 | ISO 406 ISO 1101 | MM | PRESS-FIT GUIDE PIN | |
| itr ecn no dr date | tolerances unless otherwise specified | angles | indeg | scale 1:1 | |
| V12221 RPM 11/20/01 | .0±.3 | 12/6/01 | .00±.13 | | |
| V12733 LSS 04/15/02 | 0°±2' | | | | |
| V20703 CGD 10/15/02dr | M.F.TROW | 4/24/98 | | | |
| G V21645 TAB | engr | 4/24/98 | | | |
| H M06-0055 MHT 2/01/06 | C.PENDLETON | 4/24/98 | | | |
| J M06-0277 MHT 7/22/06 | chr | 4/24/98 | | | |
| pppd | C.PENDLETON | 4/24/98 | | | |
| sheet revision j | | | | | |
| index | | | | | |
| sheet 1 | | | | | |

| | |
|-------------------|--------------------------|
| dwg no | 74748 |
| sheet 1 of 1 size | A3 |
| type | Product Customer Drawing |

6 5 4 3 2 1 A B C D

form: A3

Copyright FCI
FCIconnect.com

X-ON Electronics

Largest Supplier of Electrical and Electronic Components

Click to view similar products for [High Speed/Modular Connectors](#) category:

Click to view products by [Amphenol](#) manufacturer:

Other Similar products are found below :

[2332816-1](#) [89006-1137LF](#) [650827-1](#) [65762-001LF](#) [73474-201LF](#) [74040-1346](#) [74075-0267](#) [88911-201LF](#) [9514M0C20D](#) [1410191-1](#)
[1410337-1](#) [1410368-3](#) [1410964-2](#) [1410326-3](#) [1410367-3](#) [1410971-4](#) [1467833-1](#) [2000877-1](#) [2000878-1](#) [2041314-1](#) [2065387-1](#) [2187307-1](#)
[2187462-1](#) [2226278-6](#) [KA81-07](#) [91290-101LF](#) [1934290-1](#) [2000875-1](#) [2065917-1](#) [2102736-2](#) [FSR-40](#) [2169868-2](#) [2226279-2](#) [22354-8](#) [437-](#)
[5040-000](#) [5-1393565-0](#) [532449-3](#) [532803-2](#) [34745-0001](#) [0740618502](#) [0760151403](#) [0760551105](#) [0760551608](#) [0761451128](#) [0761651124](#)
[0761655108](#) [0761659807](#) [0769853208](#) [0736440217](#) [0758324203](#)