

PRODUCT NUMBER
76347-YXXYLF

INDICATES THE PRODUCT IS RoHS
COMPATIBLE, SEE NOTE 3

PACKAGING, NOTE 2

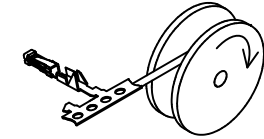
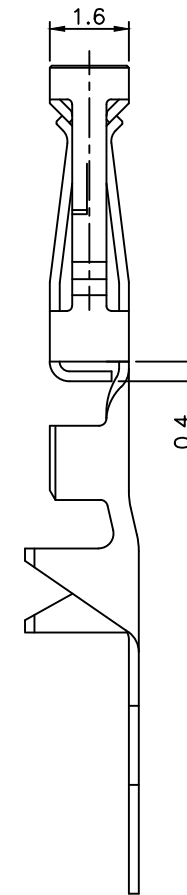
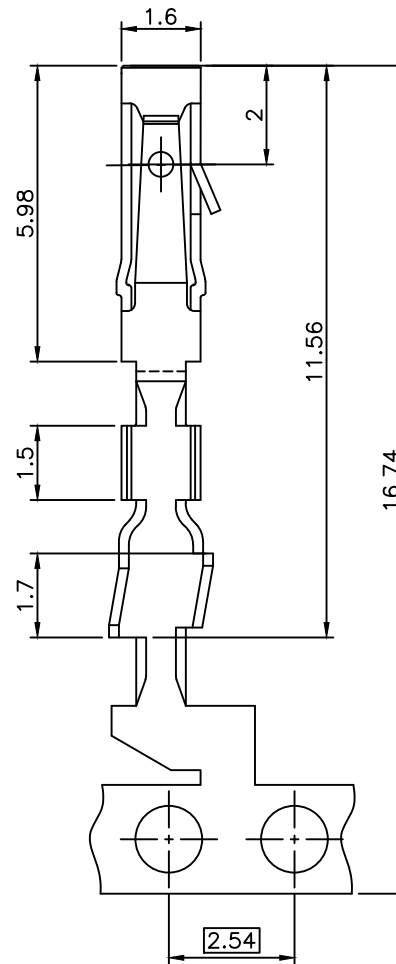
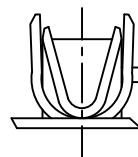
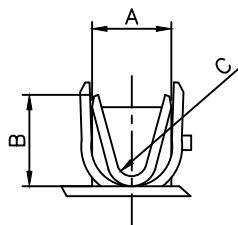
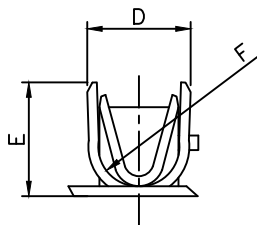
DEPENDS ON:
INSULATION BARREL,
WIRE BARREL AWG RANGE,
REELING METHOD,
NUMBER OF PRODUCT.
SEE TABLE SHEET 2/2.

PLATING CODE
3= 0.76µm GOLD ON CONTACT AREA.
2µm MIN MATTE TIN ON TAIL.
4= 5µm TIN-LEAD ON CONTACT AREA.
2µm MIN MATTE TIN ON TAIL.
OVER 1.27µm Ni MIN

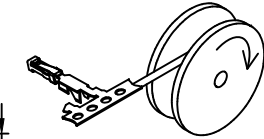
NOTES:

- 1 - TERMINAL MATERIAL: PHOSPHOR BRONZE.
- 2 - PACKAGING :
= PRODUCT PACKED IN REEL.
"V" = PRODUCT PACKED IN REEL FOR CUSTOMER DEDICATED PART
- 3 - RoHS COMPATIBLE PRODUCT SPECIFICATIONS
 - a - PLATING:
- "LF" MEANS THE PRODUCT IS LEAD-FREE,
2µm MINIMUM MATTE TIN OVER 1.27µm
MINIMUM NICKEL UNDERPLATE.
 - b - LABELING:
- MEETS PACKAGING SPECS AS PER GS-14-920
 - c - LEGAL STATEMENT: SEE GS-22-008

THE PRODUCT IS NOT INTENDED TO BE EXPOSED TO A



REELING METHOD P



REELING METHOD R

| | | | | | | | | | |
|-------------|--|----------|--|------------------|--|------------|--|---------------------|--|
| mat'l. code | | surface | | tolerance | | projection | | product family | |
| | | ISO 1302 | | ISO 406 ISO 1101 | | mm | | DUBOX | |
| ltr | | ecn no | | dr | | date | | title | |
| S | | F06-0237 | | DLE | | 06.07.103 | | CtW CONTACT ON REEL | |
| T | | F-27117 | | LMU | | 17.05.30 | | scale 10:1 | |
| M | | F04-036d | | DLE | | 04.10.11 | | dr | |
| N | | F04-0373 | | DLE | | 04.11.19 | | engr | |
| P | | F05-028d | | DLE | | 05.11.07 | | chr | |
| R | | F06-0215 | | DLE | | 06.06.30 | | appd | |
| sheet | | revision | | T | | E | | type | |
| index | | sheet | | 1 | | 2 | | CUSTOMER Drawing | |



| PRODUCT NUMBER | WIRE BARREL | | | INSULATION BARREL | | | | REELING | | APPLICATION DATA | |
|----------------|-------------|-----|-----|-------------------|----------------------|-----|-----|---------|--------|------------------|----------|
| | AWG SIZE | A | B | C | INSULATION DIA RANGE | D | E | F | METHOD | | PRODUCTS |
| 76347-X01(Y)LF | 22-30 | 1.6 | 1.6 | 0.3 | 0.9-1.5 | 2.1 | 2.6 | 0.8 | P | 15 000 | TA 317 |
| 76347-X02(Y)LF | 22-30 | 1.6 | 1.6 | 0.3 | 0.9-1.5 | 2.1 | 2.6 | 0.8 | R | 15 000 | TA 317 |
| 76347-X03(Y)LF | 22-30 | 1.6 | 1.6 | 0.3 | 0.9-1.5 | 2.1 | 2.6 | 0.8 | R | 500 | TA 317 |
| 76347-X11(Y)LF | 20-22 | 2.1 | 2.0 | 0.6 | 1.1-1.6 | 2.4 | 2.2 | 0.8 | P | 15 000 | TA 317 |
| 76347-X12(Y)LF | 20-22 | 2.1 | 2.0 | 0.6 | 1.1-1.6 | 2.4 | 2.2 | 0.8 | R | 15 000 | TA 317 |
| 76347-X41(Y)LF | 28-32 | 1.7 | 1.0 | 0.3 | 0.55-0.8 | 1.3 | 1.3 | 0.3 | P | 15 000 | TA 340 |
| 76347-X42(Y)LF | 28-32 | 1.7 | 1.0 | 0.3 | 0.55-0.8 | 1.3 | 1.3 | 0.3 | R | 15 000 | TA 340 |



Copyright FCI

| | | | | | | | | | |
|-------------|----------------|--|----------|---------------------------------------|----------|-------------|--|---------------------|------------------|
| mat'l. code | | surface | | tolerance | | projection | | product family | |
| | | ISO 1302 <input checked="" type="checkbox"/> | | ISO 406 ISO 1101 | | | | DUBOX | |
| ltr | ecn no | dr | date | tolerances unless otherwise specified | | mm | | title | |
| A | F10103 | GCO | 00.12.22 | angles | | | | CtW CONTACT ON REEL | |
| B | F10527 | GSA | 01.09.20 | linear | | scale 2.5:1 | | dwg no | |
| C | F04-0373 | DLE | 04.11.19 | | | | | sheet 2 of 2 | |
| D | F06-0215 | DLE | 06.06.30 | dr | G CORBOZ | 00.12.22 | | | size |
| E | F-27117 | LMU | 17.05.30 | enr | P NIZZI | 00.12.22 | | | A3 |
| | | | | chr | | | | | |
| | | | | appd | P N | 00.12.22 | | | type |
| | | | | | | | | | CUSTOMER Drawing |
| sheet index | revision sheet | | | | | | | | |

X-ON Electronics

Largest Supplier of Electrical and Electronic Components

Click to view similar products for [Power to the Board](#) category:

Click to view products by [Amphenol](#) manufacturer:

Other Similar products are found below :

[6450552-7](#) [6643429-1](#) [6646040-2](#) [6766604-1](#) [120959-1](#) [1393557-2](#) [1393532-2](#) [1393532-3](#) [1393532-4](#) [1393557-1](#) [1744132-7](#) [1766250-1](#)
[1892109-1](#) [1-6450850-6](#) [1-6450869-6](#) [1645526-2](#) [2005243-2](#) [377-0020-11130](#) [MC116N](#) [TE34-12-16P-F0](#) [46436-9201](#) [51700-](#)
[10201602AALF](#) [51970-004](#) [5-6450830-6](#) [4-6600333-3](#) [10125416-4050LF](#) [10130248-005LF](#) [6600320-3](#) [IPBT-103-H1-T-S-RA](#) [1888123-2](#)
[6766605-1](#) [701-15-02109](#) [6450810-7](#) [46437-1112](#) [6450813-2](#) [6450842-4](#) [10108877-R24403SLF](#) [1645523-1](#) [PSS-06-01-T-S](#) [0465621864](#)
[FWS-03-04-T-S](#) [51760-10301603ABLF](#) [MDF6-TA2022HC](#) [FWS-05-01-T-S](#) [51720-10206002AALF](#) [QE-POL-KEY](#) [FWS-08-01-T-S](#) [698-](#)
[0075-04](#) [6651670-1](#) [MC120N](#)