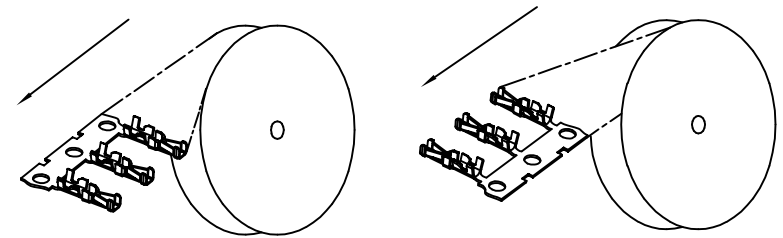


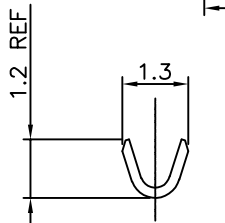
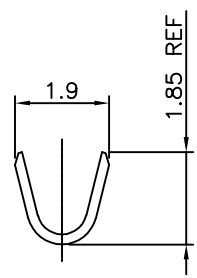
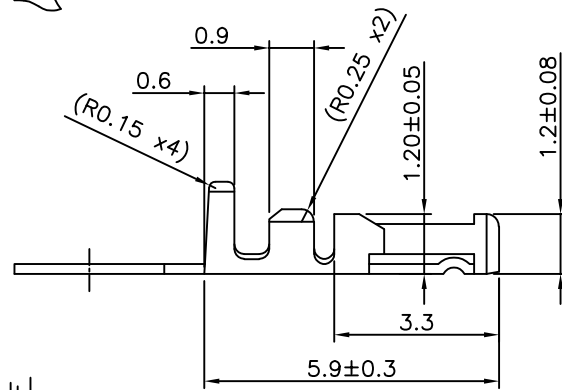
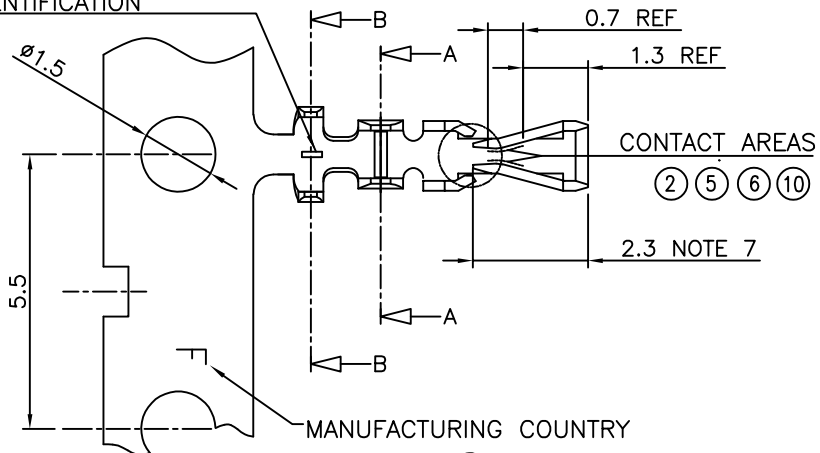
PRODUCT NO.	FINISH	REELING DIRECTION
77138-001LF	NOTE 2	FIG.1
77138-101LF	NOTE 6	FIG.1
77138-201LF	NOTE 5	FIG.1
77138-001RELF	NOTE 2	FIG.2
77138-101RELF	NOTE 6	FIG.2
77138-T01LF	NOTE 10	FIG.1



UNREELING DIRECTION
FIG.1

UNREELING DIRECTION
FIG.2

PROCESS IDENTIFICATION



NOTES

- 1 MATERIAL : PHOSPHOR BRONZE
- ② FINISH : SELECTIVE GOLD PLATING 0.2μm MIN (CONTACT AREA) OVER 1.27μm Ni MIN
- 3 WIRE RANGE : AWG 26-30
- 4 GENERAL TOLERANCE : ±0.25
- ⑤ FINISH : SELECTIVE GOLD PLATING 0.5μm MIN (CONTACT AREA) OVER 1.27μm Ni MIN
- ⑥ FINISH : SELECTIVE GOLD PLATING 0.76μm MIN (CONTACT AREA) OVER 1.27μm Ni MIN
- 7 REMAINDER : - GOLD FLASH FOR ② ⑤ ⑥
- 2.0-5.0μm TIN FOR ⑩
- a- UNDERPLATING 1.27μm Ni MIN ALL OVER
- 8 THIS PRODUCT MEETS EUROPEAN UNION DIRECTIVES AND OTHER COUNTRY REGULATIONS AS DESCRIBED IN GS-47-0004
- 9 CRIMP SPECIFICATION AS PER GS-20-058
- ⑩ FINISH : 2.0-5.0μm TIN ON CONTACT AREA. UNDERPLATING 1.27μm Ni MIN ALL OVER
- 11 PRODUCT SPECIFICATION : GS-12-415

mat'l. code				surface	tolerance	projection	product family
SEE NOTES				ISO 1302	ISO 406 ISO 1101		MINITEK
ltr	ecn no	dr	date	tolerances unless otherwise specified			title
S	F-22846	AMA	15.12.21	angles	.x ±0.25	mm	CTW MINITEK AWG 26-30
T	F-39336	DDE	20.12.15	linear	.xx ±0.15 .xxx ±0.05	scale 5:1	
M	F12-0004	JCO	12.01.04	dr	L.MULIN	08.01.28	FCI sheet 1 of 1 size A3 77138 type CUSTOMER Drawing
N	F12-0088	JCO	12.07.23	enfr	J.COMPAGNON	08.01.28	
P	B-19188	LMU	14.10.24	chr			
R	F-21704	AMA	15.08.18	appd	J.CO	08.05.05	
sheet index	revision sheet						



FCIconnect.com

Copyright FCI

X-ON Electronics

Largest Supplier of Electrical and Electronic Components

Click to view similar products for [Headers & Wire Housings](#) category:

Click to view products by [Amphenol](#) manufacturer:

Other Similar products are found below :

[892-18-020-10-001101](#) [58102-G61-06LF](#) [582553-1](#) [0009485154](#) [009176003701906](#) [0050291907](#) [LY20-4P-DT1-P1E-BR](#) [02.125.8002.8](#)
[609-3404](#) [61062-3](#) [622-0430](#) [622-3653LF](#) [63453-116](#) [636-1030](#) [636-1427](#) [636-3427](#) [636-4007](#) [641938-9](#) [641991-4](#) [644827-2](#) [65817-010LF](#)
[65817-015LF](#) [65863-015LF](#) [66207-023LF](#) [67095-007LF](#) [67601157](#) [68648-049](#) [70.362.1628.0](#) [70-4210](#) [70-4226B](#) [70-4853B](#) [707-5020](#) [707-5028](#) [71.350.2428.0](#) [71918-208LF](#) [71961-016LF](#) [733-134](#) [733-162](#) [754199-000](#) [760-3052](#) [787-8014-00](#) [79531-3000](#) [FCN-360C032-B](#) [FCN-367T-T012/H](#) [FCN-723D010/2](#) [80.063.4001.1](#) [800-90-001-10-001000](#) [800-90-010-10-002000](#) [801-43-002-10-013000](#) [801-43-006-10-002000](#)