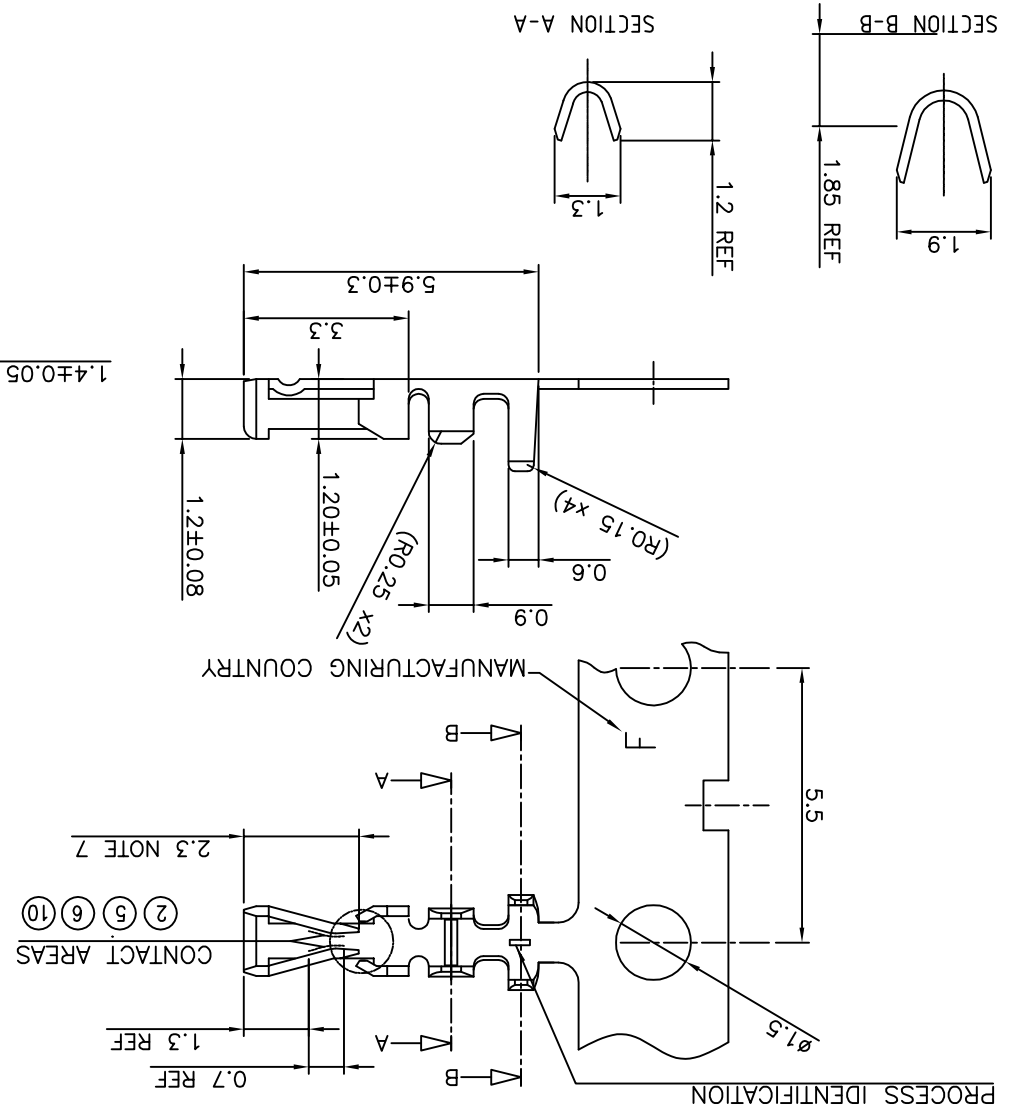
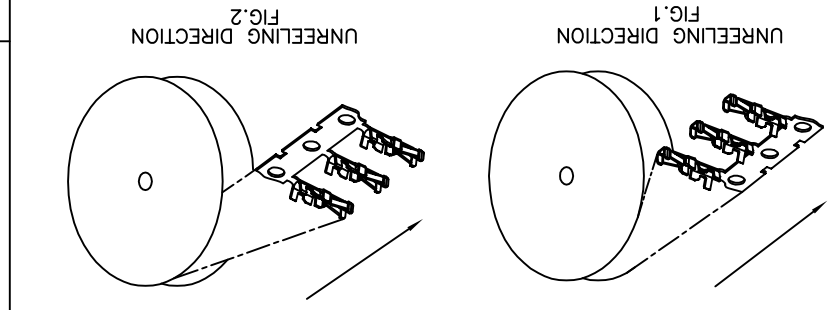


PRODUCT NO.	FINISH	REELING DIRECTION
77138-001LF	NOTE 2	FIG.1
77138-101LF	NOTE 6	FIG.1
77138-201LF	NOTE 5	FIG.1
77138-001REF	NOTE 2	FIG.2
77138-101REF	NOTE 6	FIG.2
77138-101LF	NOTE 10	FIG.1



- NOTES
- MATERIAL : PHOSPHOR BRONZE
 - FINISH : SELECTIVE GOLD PLATING 0.2µm MIN (CONTACT AREA) OVER 1.27µm N: MIN
 - WIRE RANGE : AWG 26-30
 - GENERAL TOLERANCE : ±0.25
 - FINISH : SELECTIVE GOLD PLATING 0.5µm MIN (CONTACT AREA) OVER 1.27µm N: MIN
 - FINISH : SELECTIVE GOLD PLATING 0.76µm MIN (CONTACT AREA) OVER 1.27µm N: MIN
 - REMAINDER : - GOLD FLASH FOR (2) (5) (6) - 2.0-5.0µm TIN FOR (10)
 - THIS PRODUCT MEETS EUROPEAN UNION DIRECTIVES AND OTHER COUNTRY REGULATIONS AS DESCRIBED IN GS-47-0004
 - CRIMP SPECIFICATION AS PER GS-20-058
 - FINISH : 2.0-5.0µm TIN ON CONTACT AREA
 - UNDERPLATING 1.27µm N: MIN ALL OVER
 - PRODUCT SPECIFICATION : GS-12-415



mat'l. code		SEE NOTES		surface	ISO 1302	tolerance unless otherwise specified	projection	product family	MINITEK
lfr	ecn no	dr	date	ISO 1302	ISO 406	ISO 1101	ISO 1101	title	
S	F-22846	AMA	15.12.21	angles	x ±0.25	linear	mm	mm	
L	F08-0174	JCO	08.05.20	linear	xxx ±0.15	xxx ±0.05	scale 5:1	CTW MINITEK	AWG 26-30
M	F12-0004	JCO	12.01.04	dr	L.MULIN	08.01.28	dwg no	77138	sheet 1 of 1 size
N	F12-0088	JCO	12.07.23	engr	J.COMPAGNON	08.01.28	type	CUSTOMER	Drawing
P	B-19188	LMU	14.10.24	chn	J.CO	08.05.05	sheet		
R	F-21704	AMA	15.08.18	appd	J.CO	08.05.05	revision		
index	sheet	revision	sheet	index	sheet	revision	sheet	index	sheet

X-ON Electronics

Largest Supplier of Electrical and Electronic Components

Click to view similar products for [Headers & Wire Housings](#) category:

Click to view products by [Amphenol](#) manufacturer:

Other Similar products are found below :

[95000-104TRLF](#) [10135584-644402LF](#) [DF62W-EP2022PCA](#) [95000-106TRLF](#) [DF62W-2022SCA](#) [DF62W-EP2022PC](#) [2203348](#) [DF62W-2022SC](#) [1084018](#) [1029039](#) [1084017](#) [802-10-012-10-002000](#) [1112640](#) [1112639](#) [891-007-9SS-BST1T](#) [000-34000](#) [0008550134](#) [0009482033](#) [0009507031](#) [57102-F02-18ULF](#) [57102-S06-03LF](#) [57202-S52-04LF](#) [PCN6-15S-2.5E](#) [0039019024](#) [58102-G61-06LF](#) [582553-1](#) [0009485154](#) [0009508121](#) [0022285053](#) [0050291907](#) [018731A](#) [LY20-4P-DT1-P1E-BR](#) [02.125.8002.8](#) [60101931](#) [60598-1 \(Cut Strip\)](#) [M1625-3R/100](#) [61062-3](#) [61082-181009](#) [CSU011177004](#) [636-1427](#) [638009-1](#) [641938-9](#) [641991-4](#) [644168-1](#) [644827-2](#) [647662-1](#) [65039-019ELF](#) [65692-001LF](#) [65781-018](#) [65781-047](#)