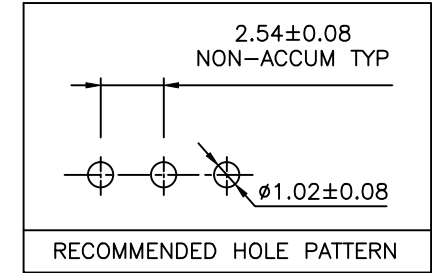
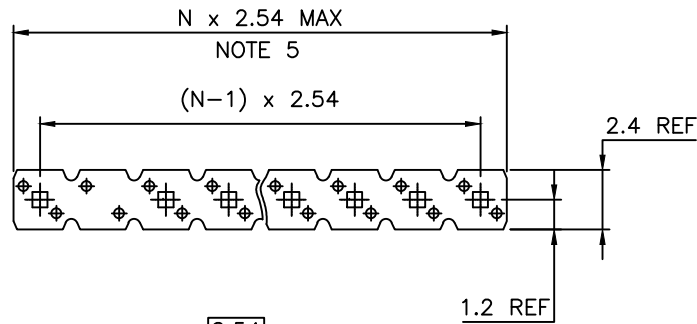


PRODUCT NUMBER

77312-YXXLF

- RoHS COMPATIBLE  
SEE NOTE 7
- PIN STYLE
- PLATING SEE SHEET 2



NOTES:

1. HOUSING MAT'L : HIGH TEMPERATURE THERMOPLASTIC. UL94V-0 COLOR: BLACK
2. PIN MATERIAL : PHOSPHOR BRONZE
3. PRODUCT PACKAGED IN POLY BAGS.
4. 9N MIN RETENTION IN EITHER DIRECTION
5. TO DETERMINE DIMENSIONS :  
N = NUMBER OF POSITIONS PER ROW  
EXAMPLE : 8 POS  $N \times 2.54 = 20.32\text{mm}$
6. UNDERPLATING :  $1.27\mu\text{m}$  Ni MIN
7. RoHS COMPATIBLE PRODUCT SPECIFICATIONS

a - PLATING:

- "LF" MEANS THE PRODUCT IS LEAD-FREE,  $2\mu\text{m}$  MINIMUM MATTE TIN OVER  $1.27\mu\text{m}$  MINIMUM NICKEL UNDERPLATE.

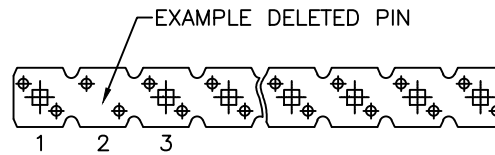
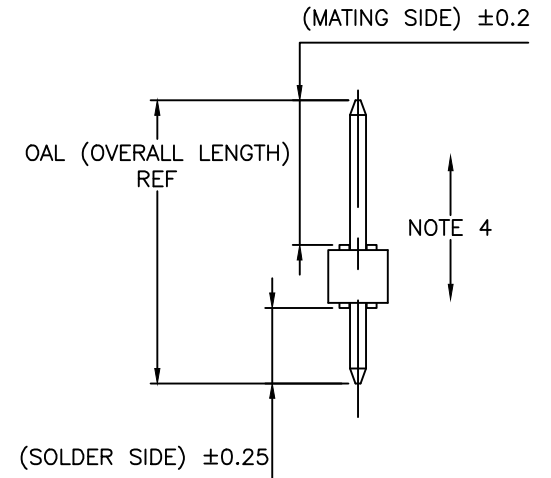
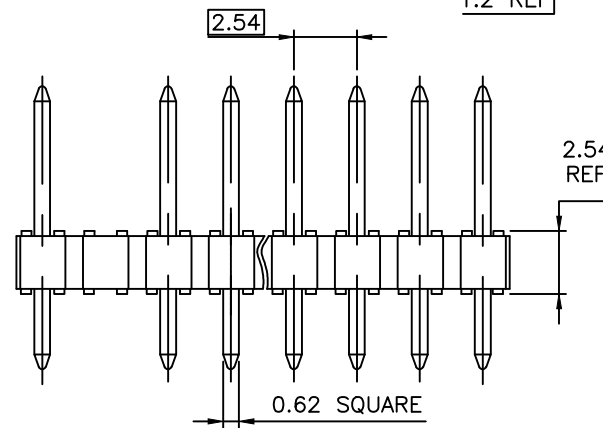
b - MANUFACTURING PROCESS COMPATIBILITY

- THE HOUSING WILL WITHSTAND EXPOSURE TO  $260^\circ\text{C} \pm 5^\circ\text{C}$  SOLDER BATH TEMPERATURE FOR 5 SECONDS IN A WAVE SOLDER APPLICATION WITH A 1.6mm MIN THICK CIRCUIT BOARD.

c - LABELING:

- MEETS PACKAGING SPECS AS PER GS-14-920

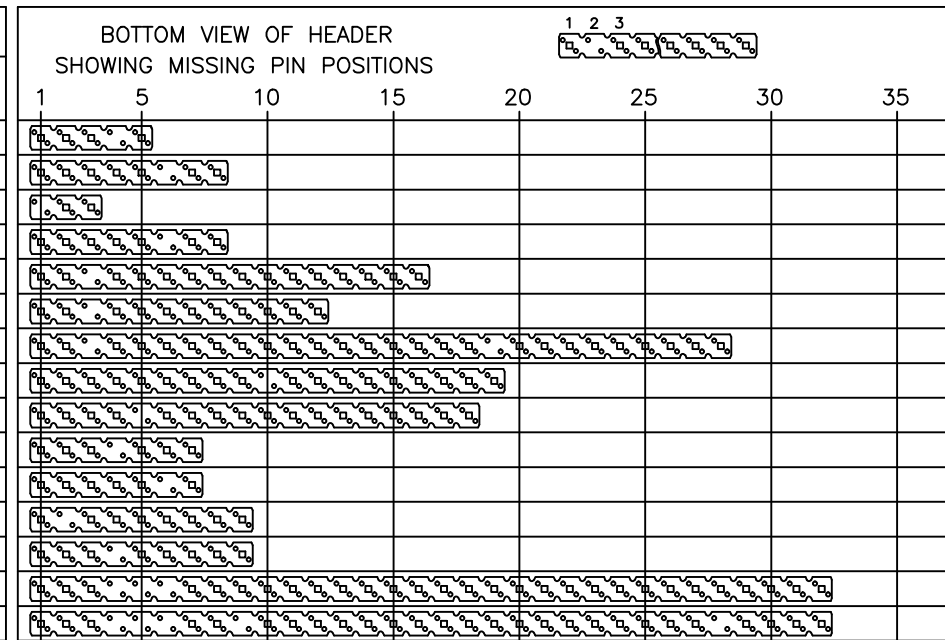
d - LEGAL STATEMENT: SEE GS-47-0004



BOTTOM VIEW

mat'l. code SEE NOTES		surface ISO 1302 <input checked="" type="checkbox"/> ISO 406 ISO 1101		tolerance ISO 406 ISO 1101		projection 		product family BSTIK	
ltr	ecn no	dr	date	tolerances unless otherwise specified				title HEADER SR,STR, POL,DUPLX,2.54mm	
AR	F-24825	AMA	16.08.26	angles	linear	scale 5:1		dwg no 77312	
AS	F-25332	DDE	16.11.15					sheet 1 of 5 size A3	
AT	F-25396	LMU	16.11.21					type CUSTOMER Drawing	
dr		COMPAGNON J		95.10.27					
AM		B-20230 LMU		15.02.09 engr JMC		95.10.27			
AN		B-21118 LMU		15.06.10 chr					
AP		F-24327 AMA		16.06.17 appd JMC		95.10.27			
sheet	revision	AT	T	N	Y	G			
index	sheet	1	2	3	4	5			

PIN STYLE	PRODUCT DEFINITION			
	NB OF POS	MATING SIDE	SOLDER SIDE	("OAL") REF
01	1x5	5.84	3.42	11.8
02	1x8	5.84	3.42	11.8
03	1x3	5.84	3.42	11.8
04	1x8	5.72	2.54	10.8
05	1x16	5.72	2.54	10.8
06	1x12	5.72	2.54	10.8
07	1x28	5.84	3.42	11.8
15	1x19	5.84	3.42	11.8
16	1x18	5.84	3.42	11.8
17	1x7	5.84	3.42	11.8
18	1x7	5.84	3.42	11.8
19	1x9	5.84	3.42	11.8
20	1x9	5.84	3.42	11.8
21	1x32	5.84	3.42	11.8
22	1x32	5.84	3.42	11.8



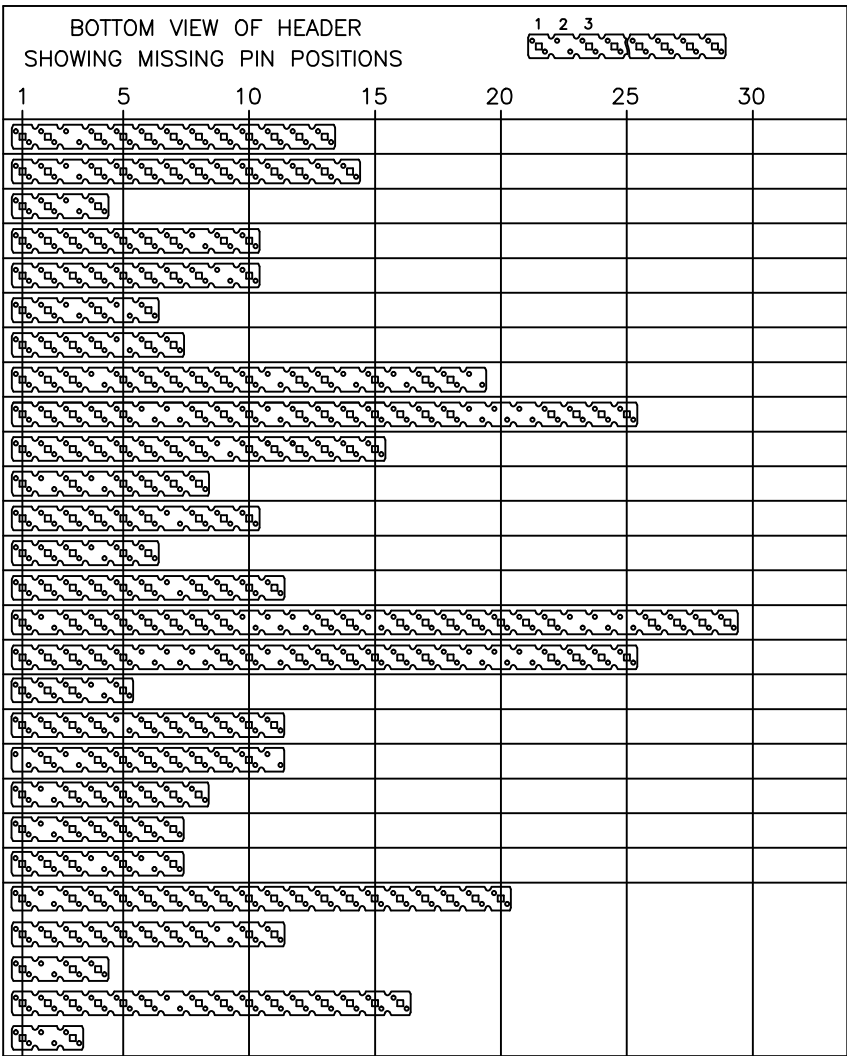
77312-GXXLF	0.76μm FULL GXT	
77312-SXXLF	0.38μm FULL GXT	
77312-8XXLF	0.38μm Au/GXT	2.0-7.5μm Sn MATTE
77312-5XXLF	0.25μm Au/GXT	2.0-7.5μm Sn MATTE
77312-4XXLF	2.0-7.5μm FULL MATTE TIN	
77312-2XXLF	1.27μm Au	2.0-7.5μm Sn MATTE
77312-1XXLF	0.76μm Au/GXT	2.0-7.5μm Sn MATTE
77312-1XXSLF	0.76μm Au/GXT	GOLD FLASH
PLATING CODE	CONTACT AREA	REMAINDER
	PLATING THICKNESS OVER 1.27μm Ni	

mat'l. code	surface	tolerance	projection	product family		
	ISO 1302 ✓	ISO 406 ISO 1101		BSTIK		
ltr	ecn no	dr	date	title		
S	B-18917	LMU	14.09.26	HEADER,SR,STR, POL,DUPLX,2.54mm		
T	B-21118	LMU	15.06.10			
		angles	Linear	mm		
				scale 1:1		
M	F10707	LMU	01.11.28	dr	COMPAGNON J	95.01.11
N	F06-0196	LMU	06.06.20	enr	JMC	95.10.27
P	F08-0148	RTR	08.03.31	chr		
R	B-17773	LMU	14.05.26	appd	JMC	95.10.27
sheet	revision					
index	sheet					



Copyright FCI

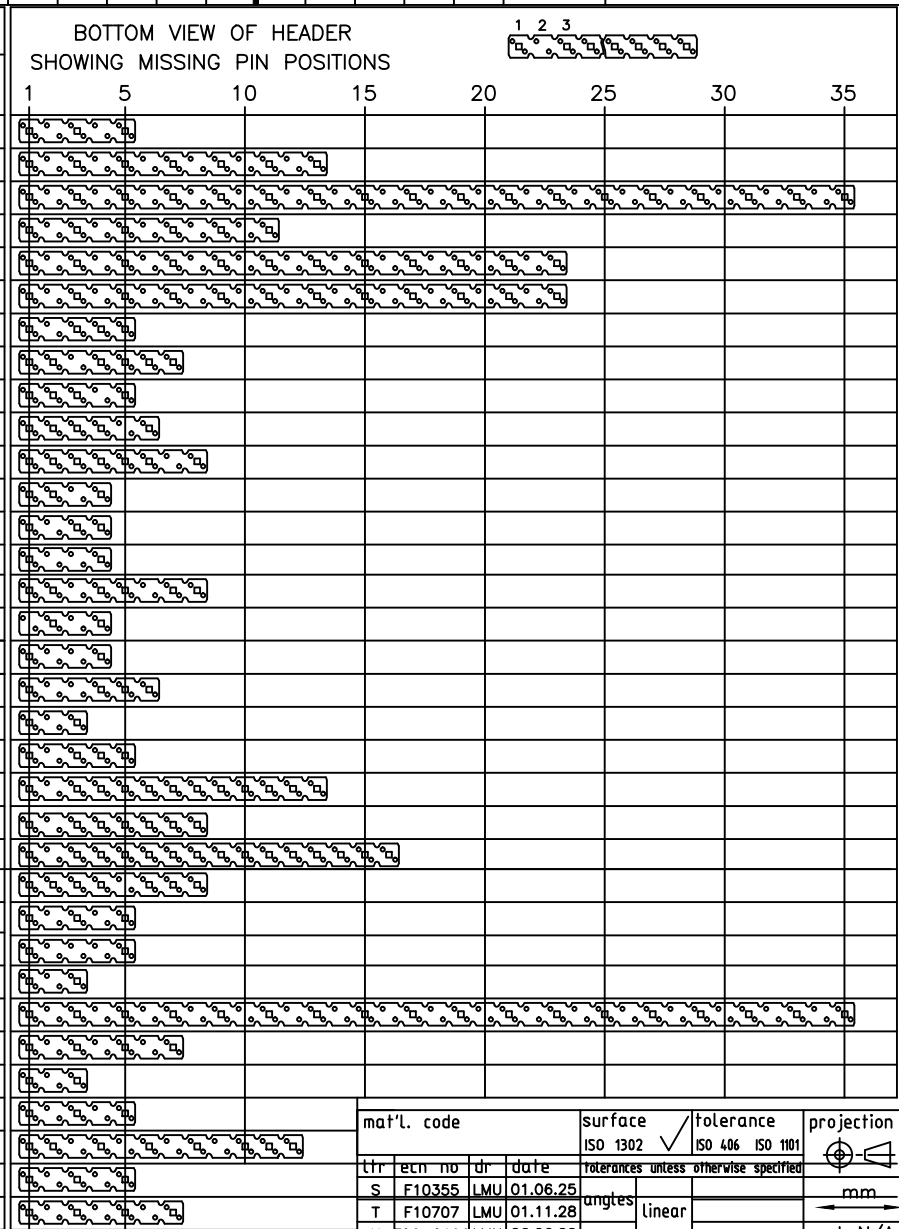
PIN STYLE	PRODUCT DEFINITION			
	NB OF POS	MATING SIDE	SOLDER SIDE	("OAL") REF
23	1x 13	5.84	3.42	11.8
24	1x 14	5.84	3.42	11.8
25	1x 4	5.84	3.42	11.8
26	1x 10	5.84	3.42	11.8
27	1x 10	5.84	3.42	11.8
28	1x 6	5.72	2.54	10.8
29	1x 7	5.84	3.42	11.8
30	1x 19	5.84	3.42	11.8
31	1x 25	5.84	3.42	11.8
32	1x 15	5.84	3.42	11.8
33	1x 8	5.84	3.42	11.8
34	1x 10	5.84	3.42	11.8
35	1x 6	5.84	3.42	11.8
36	1x 11	5.84	3.42	11.8
37	1x 29	5.84	3.42	11.8
38	1x 25	5.84	3.42	11.8
39	1x 5	5.72	2.54	10.8
40	1x 11	5.72	3.05	11.3
41	1x 11	5.72	3.05	11.3
42	1x 8	7.75	3.06	13.35
43	1x 7	5.84	3.42	11.8
44	1x 7	5.72	2.54	10.8
45	1x 20	5.72	7.64	15.9
46	1x 11	5.72	3.05	11.3
48	1x 4	5.72	3.05	11.3
49	1x 16	5.72	7.64	15.9
50	1x 3	5.72	3.05	11.3



Copyright FCI

mat'l. code		surface		tolerance		projection		product family	
		ISO 1302		ISO 406 ISO 1101				BSTIK	
ltr		ecn no		dr		date		title	
J		F40810		JMC		94.10.20		HEADER, SR, STR,	
K		F50801		JMC		95.10.27		POL, DUPLEX, 2.54mm	
L		F10707		LMU		01.11.28		scale 1:1	
M		F06-0196		LMU		06.06.20			
N		F11-0034		LMU		11.03.03		dwg no	
				dr		COMPAGNON J		sheet 3 of - size	
				enfr		JMC		77312 A3	
				chr				type	
				appd		JMC		CUSTOMER Drawing	
sheet index		revision sheet							

PIN STYLE	PRODUCT DEFINITION			
	NB OF POS	MATING SIDE	SOLDER SIDE	("OAL") REF
51	1x5	5.72	3.05	11.3
52	1x13	5.72	3.05	11.3
53	1x35	5.72	3.05	11.3
54	1x11	5.72	3.05	11.3
55	1x23	12.83	3.03	18.4
56	1x23	17.5	3.46	23.5
57	1x5	5.84	3.42	11.8
58	1x7	5.72	3.05	11.3
59	1x5	5.72	3.05	11.3
60	1x6	5.72	3.05	11.3
61	1x8	5.72	3.05	11.3
62	1x4	5.72	3.05	11.3
63	1x4	15.57	2.84	20.95
65	1x4	5.72	2.54	10.8
66	1x8	5.72	2.54	10.8
67	1x4	5.72	3.05	11.3
68	1x4	5.72	3.05	11.3
69	1x6	5.72	3.05	11.3
70	1x3	5.72	2.54	10.8
71	1x5	5.84	2.42	10.8
72	1x13	5.72	2.54	10.8
73	1x8	5.84	2.41	10.8
74	1x16	5.84	2.41	10.8
75	1x08	5.84	2.41	10.8
76	1x05	2.50	1.80	6.84
77	1x05	2.50	1.80	6.84
78	1x03	8.13	2.33	13.00
79	1x35	5.84	3.42	11.80
80	1x07	2.50	1.80	6.84
81	1x03	24.90	3.00	30.40
82	1x05	20.65	11.00	34.15
83	1x12	5.84	3.42	11.80
84	1x05	8.00	2.90	13.40
85	1x07	8.00	2.90	13.40

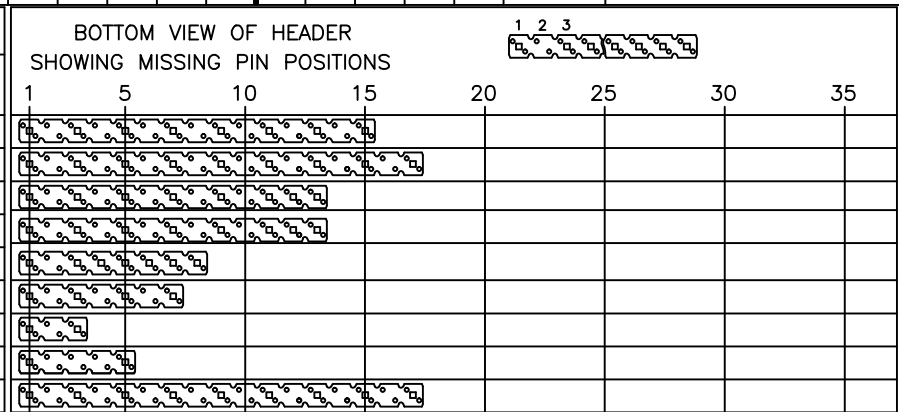


mat'l. code	surface	tolerance	projection
	ISO 1302	ISO 406 ISO 1101	
tr ecn no dr date	tolerances unless otherwise specified		
S F10355 LMU 01.06.25	angtes	Linear	mm
T F10707 LMU 01.11.28			scale N/A
U F06-0196 LMU 06.06.20			
V F11-0034 LMU 11.03.03	dr COMPAGNON J	95.10.11	
W F11-0045 LMU 11.04.06	enr JMC	95.10.27	
X F11-0329 LMU 11.11.17	chr		
Y B-16703 LMU 14.01.09	appd JMC	95.10.27	
sheet index	revision sheet		

product family	BSTIK
title	HEADER,SR,STR, POL,DUPLX,2.54mm
dwg no	77312
sheet 4 of	size A3
type	CUSTOMER Drawing

FCJ  
FCconnect.com  
Copyright FCJ

PIN STYLE	PRODUCT DEFINITION			
	NB OF POS	MATING SIDE	SOLDER SIDE	("OAL") REF
86	1x 15	12.56	0.8	15.90
87	1x 17	12.56	0.8	15.90
88	1x 13	5.72	3.05	11.30
89	1x 13	5.84	3.42	11.80
90	1x 08	7.50	3.42	13.46
91	1x 07	12.83	3.03	18.40
92	1x 03	3.55	3.05	9.14
93	1x 05	3.55	3.05	9.14
94	1x 17	11.60	5.05	19.15



Copyright FCI

mat'l. code		surface		tolerance		projection		product family	
		ISO 1302		ISO 406 ISO 1101				BSTIK	
ltr	ecn no	dr	date	tolerances unless otherwise specified		mm		title	
A	B-17773	LMU	14.05.26	angles	Linear			HEADER,SR,STR, POL,DUPLX,2.54mm	
B	B-20094	BVE	15.01.27			scale N/A		sheet 5 of	
C	B-20230	LMU	15.02.09					77312 A3	
D	F-24327	AMA	16.06.17	dr	L.MULIN	14.05.26	type CUSTOMER Drawing		
E	F-24825	AMA	16.08.26	enr	JMC	14.05.26			
F	F-25332	DDE	16.11.15	chr					
G	F-25396	LMU	16.11.21	app		95.10.27			
sheet	revision								
index	sheet								

## X-ON Electronics

Largest Supplier of Electrical and Electronic Components

*Click to view similar products for [Headers & Wire Housings](#) category:*

*Click to view products by [Amphenol](#) manufacturer:*

Other Similar products are found below :

[892-18-020-10-001101](#) [58102-G61-06LF](#) [582553-1](#) [0009485154](#) [009176003701906](#) [0050291907](#) [LY20-4P-DT1-P1E-BR](#) [02.125.8002.8](#)  
[609-3404](#) [61062-3](#) [622-0430](#) [622-3653LF](#) [63453-116](#) [636-1030](#) [636-1427](#) [636-3427](#) [636-4007](#) [641938-9](#) [641991-4](#) [644827-2](#) [65817-010LF](#)  
[65817-015LF](#) [65863-015LF](#) [66207-023LF](#) [67095-007LF](#) [67601157](#) [68648-049](#) [70.362.1628.0](#) [70-4210](#) [70-4226B](#) [70-4853B](#) [707-5020](#) [707-5028](#) [71.350.2428.0](#) [71918-208LF](#) [71961-016LF](#) [733-134](#) [733-162](#) [754199-000](#) [760-3052](#) [787-8014-00](#) [79531-3000](#) [FCN-360C032-B](#) [FCN-367T-T012/H](#) [FCN-723D010/2](#) [80.063.4001.1](#) [800-90-001-10-001000](#) [800-90-010-10-002000](#) [801-43-002-10-013000](#) [801-43-006-10-002000](#)