

PRODUCT NUMBER
77709-YXXLF

RoHS COMPLIANT & COMPATIBLE, SEE NOTE 8

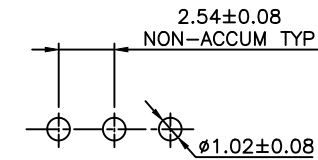
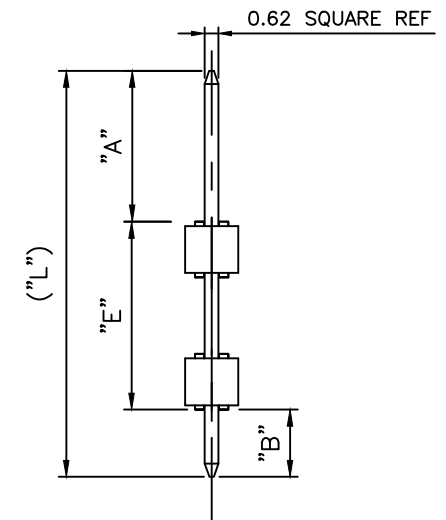
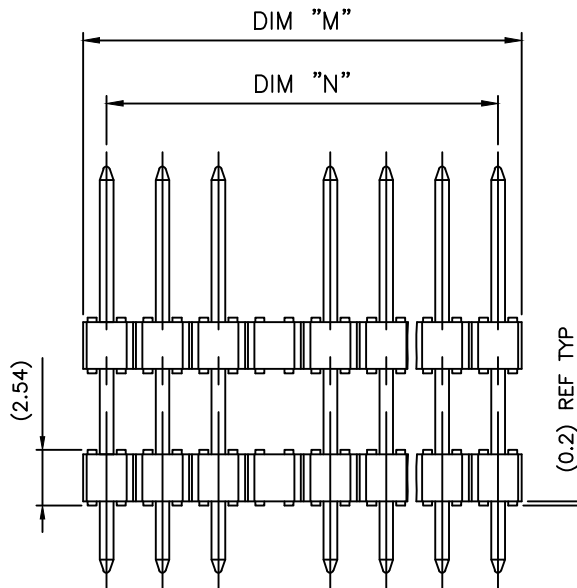
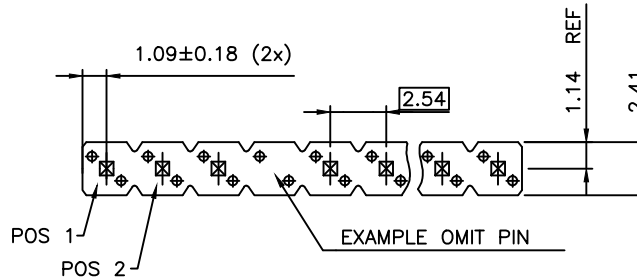
PLATING:

PIN STYLE SEE TABLE SHEET 2

- 1 = 0.76µm FULL GOLD/GXT, OVER 1.27µm Ni MIN
- 3 = 3.81µm FULL TIN/LEAD OVER 1.27µm Ni MIN.
WHEN "LF" IS REQUIRED, 2µm MATTE TIN OVER
1.27µm MIN NICKEL IS PROVIDED INSTEAD OF TIN-LEAD
- 7 = 0.13µm FULL GOLD, OVER 1.27µm Ni MIN
- 8 = 0.38µm FULL GOLD/GXT, OVER 1.27µm Ni MIN

NOTES:

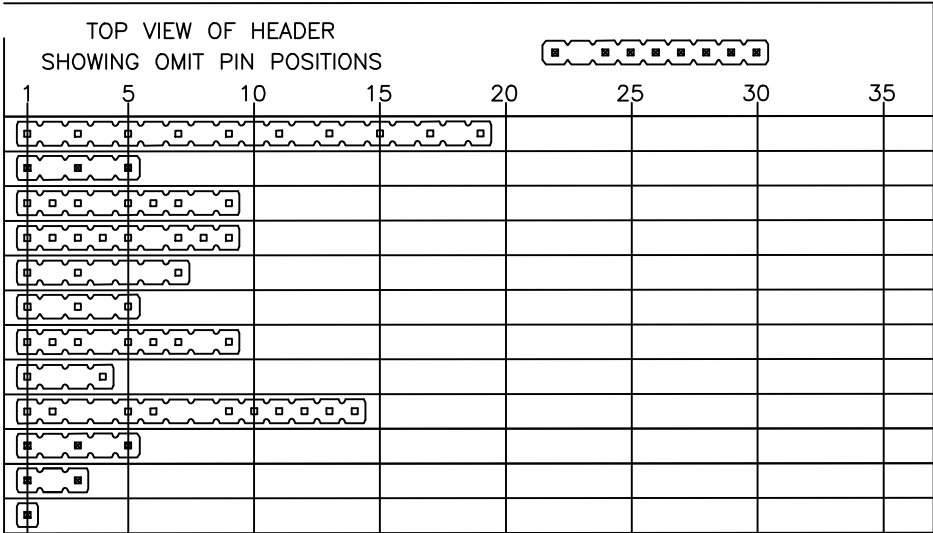
1. HOUSING MAT'L : HIGH TEMPERATURE THERMOPLASTIC
FLAME RETARDANT PER UL94-V0, COLOR BLACK.
2. PIN MATERIAL : PHOSPHOR BRONZE.
3. STANDARD PACKAGING IN POLYBAG
4. RoHS COMPATIBLE PRODUCT SPECIFICATIONS
 - a - SUFFIX "LF" IS ADDED JUST FOR EASY
 - b - MANUFACTURING PROCESS COMPATIBILITY
 - THE HOUSING WILL WITHSTAND EXPOSURE TO
260°C ±5°C SOLDER BATH TEMPERATURE FOR
5 SECONDS IN A WAVE SOLDER APPLICATION
WITH A 1.6mm MIN THICK CIRCUIT BOARD.
 - c - LABELING:
 - MEETS PACKAGING SPECS AS PER GS-14-920
 - d - LEGAL STATEMENT: SEE GS-47-0004



RECOMMENDED HOLE PATTERN

mat'l. code		surface		tolerance		projection		product family	
		ISO 1302		ISO 406 ISO 1101		mm		BSTIK	
ltr ecn no dr date		tolerances unless otherwise specified		angles		linear		title	
W F-22318 AMA 15.10.27								HEADER SR,STR	
X F-23461 LMU 16.03.07								DOUBLE BODY POL	
Y F-24446 AMA 16.07.05								scale 1:1	
		dr O MATHEVON 96.04.01		engr COMPAGNON.J 96.04.01		FCJ		dwg no 77709 sheet 1 of 2 size A3	
T B-18505 LMU 14.08.08								type CUSTOMER Drawing	
U B-19562 BVE 14.11.27		chr JCO 96.04.01							
V B-19782 AMA 14.12.18		appd JMC 96.04.01							
sheet revision Y W									
index sheet 1 2									

PIN STYLE	NB OF POS	PRODUCT DEFINITION					
		"A" ±0.2	"E" ±0.25	"B" ±0.25	("L") REF	("M") REF	("N") REF
21	1x 19	3.0	20.3	2.75	26.04	48.26	45.72
22	1x 05	4.95	6.00	4.95	15.90	12.70	10.16
23	1x 09	4.95	6.00	4.95	15.90	22.86	20.32
24	1x 09	3.10	11.45	3.10	17.65	22.86	20.32
25	1x 07	3.10	11.45	3.10	17.65	17.78	15.24
26	1x 05	8.60	6.00	8.60	23.20	12.70	10.16
27	1x 09	8.60	6.00	8.60	23.20	22.86	20.32
28	1x 04	15.20	12.00	3.60	30.80	10.16	7.62
29	1x 14	15.20	12.00	3.60	30.80	35.56	33.02
30	1x 05	3.00	13.00	3.00	19.00	12.70	10.16
31	1x 03	3.05	6.50	3.05	12.60	7.62	5.08
32	1x 01	3.05	6.50	3.05	12.60	7.62	5.08



Copyright FCI

mat'l. code		surface		tolerance		projection		product family	
		ISO 1302		ISO 406 ISO 1101				BSTIK	
ltr ecn no dr date		tolerances unless otherwise specified		angles		mm		title	
P F09-0222 JCO 09.11.23				Linear				HEADER SR,STR	
R F12-0043 LMU 12.05.29								DOUBLE BODY POL	
S B-16507 LMU 13.12.12						scale 1:1		dwg no	
T B-18505 LMU 14.08.08 dr		O MATHEVON 96.04.01						sheet 2 of 2 size	
U F-22318 AMA 15.10.27 engr		COMPAGNON.J 96.04.01						77709 A3	
V F-23461 LMU 16.03.07 chr		JCO 96.04.01						type CUSTOMER Drawing	
W F-24446 AMA 16.07.05 appd		JMC 96.04.01							
sheet index		revision sheet							

X-ON Electronics

Largest Supplier of Electrical and Electronic Components

Click to view similar products for [Headers & Wire Housings](#) category:

Click to view products by [Amphenol](#) manufacturer:

Other Similar products are found below :

[892-18-020-10-001101](#) [58102-G61-06LF](#) [582553-1](#) [0009485154](#) [009176003701906](#) [0050291907](#) [LY20-4P-DT1-P1E-BR](#) [02.125.8002.8](#)
[609-3404](#) [61062-3](#) [622-0430](#) [622-3653LF](#) [63453-116](#) [636-1030](#) [636-1427](#) [636-3427](#) [636-4007](#) [641938-9](#) [641991-4](#) [644827-2](#) [65817-010LF](#)
[65817-015LF](#) [65863-015LF](#) [66207-023LF](#) [67095-007LF](#) [67601157](#) [68648-049](#) [70.362.1628.0](#) [70-4210](#) [70-4226B](#) [70-4853B](#) [707-5020](#) [707-](#)
[5028](#) [71.350.2428.0](#) [71918-208LF](#) [71961-016LF](#) [733-134](#) [733-162](#) [754199-000](#) [760-3052](#) [787-8014-00](#) [79531-3000](#) [FCN-360C032-B](#) [FCN-](#)
[367T-T012/H](#) [FCN-723D010/2](#) [80.063.4001.1](#) [800-90-001-10-001000](#) [800-90-010-10-002000](#) [801-43-002-10-013000](#) [801-43-006-10-002000](#)