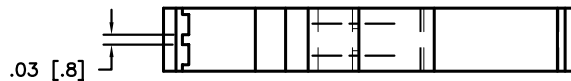
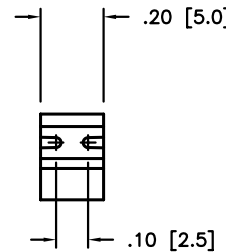
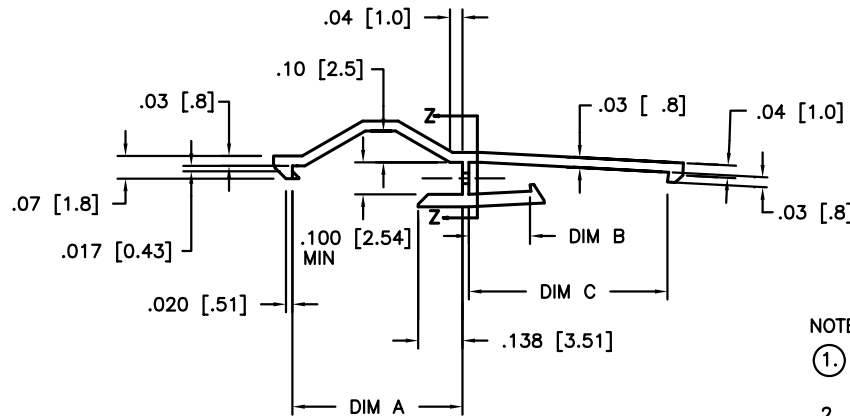


PRODUCT NUMBER	DIM A	DIM B	DIM C	APPLICATION	NOTES
78242-001	.53/13.5	.191/4.85	.62/15.7	MINI LATCH TO CLINCHER	
78242-001LF	.53/13.5	.191/4.85	.62/15.7	MINI LATCH TO CLINCHER	NOTE 3
78242-002	.53/13.5	.157/4.00	.55/14.0	MINI LATCH RECEPTACLE TO MINI LATCH PIN	
78242-002LF	.53/13.5	.157/4.00	.55/14.0	MINI LATCH RECEPTACLE TO MINI LATCH PIN	NOTE 3
78242-003	.59/14.9	.191/4.85	.620/15.7	CLINCHER RECEPTACLE TO CLINCHER PIN	
78242-003LF	.59/14.9	.191/4.85	.620/15.7	CLINCHER RECEPTACLE TO CLINCHER PIN	NOTE 3



NOTES:

1. MATERIAL: PBT, UNREINFORCED, FLAME RETARDANT PER UL94 V-0, COLOR: BLUE.
2. ALWAYS APPLY LATCH TO PIN CONNECTOR FIRST TO FACILITATE ASSEMBLY.
3. PART NUMBERS WITH AN LF SUFFIX MEET EUROPEAN UNION DIRECTIVES AND OTHER COUNTRY REGULATIONS AS DESCRIBED IN GS-22-008.
4. THIS PRODUCT IS NOT INTENDED TO BE EXPOSED TO MANUFACTURING SOLDERING PROCESSES.

mat'l. code SEE NOTE 1				surface ASME Y14.5 ✓ / tolerance ASME Y14.5		projection INCH/MM		product family BERGCON ACCESSORIES	
ltr	ecn no	dr	date	tolerances unless otherwise specified		INCH/MM		title LATCH FOR FLYING CONNECTION SINGLE ROW	
C	V40999	HTB	1994-06-18	angles	XX±.01/XX±.03	scale 2:1		dwg no 78242	
D	V41244	HTB	1994-08-24		XXX±.005/XX±.01			sheet 1 of 1 size A4	
E	V41721	MSC	1994-12-08	0°±2'	XXXX±.0020/XXX±.0051			FCI	
F	V50169	HTB	1995-01-20	dr	M.CLOUSER	1994-06-18		type Product Customer Drawing	
G	V00492	RGD	2000-04-18	engr	T. HANNA	1994-06-18			
H	M06-0213	MHT	2006-06-05	chr	J.MURPHY	1994-06-18			
J	V06-1200	HTB	2006-12-18	appd	T.HANNA	1994-06-18			
sheet	revision	J							
index	sheet	1							

X-ON Electronics

Largest Supplier of Electrical and Electronic Components

Click to view similar products for [Headers & Wire Housings](#) category:

Click to view products by [Amphenol](#) manufacturer:

Other Similar products are found below :

[95000-104TRLF](#) [10135584-644402LF](#) [DF62W-EP2022PCA](#) [95000-106TRLF](#) [DF62W-2022SCA](#) [DF62W-EP2022PC](#) [2203348](#) [DF62W-2022SC](#) [1084018](#) [1029039](#) [1084017](#) [802-10-012-10-002000](#) [1112640](#) [1112639](#) [000-34000](#) [0009482033](#) [0009507031](#) [57102-S06-03LF](#) [57202-S52-04LF](#) [PCN6-15S-2.5E](#) [0039019024](#) [58102-G61-06LF](#) [582553-1](#) [0009508121](#) [0050291907](#) [018731A](#) [LY20-4P-DT1-P1E-BR](#) [02.125.8002.8](#) [60101931](#) [60598-1 \(Cut Strip\)](#) [M1625-3R/100](#) [61062-3](#) [61082-181009](#) [636-1427](#) [638009-1](#) [641938-9](#) [641991-4](#) [644168-1](#) [647662-1](#) [65039-019ELF](#) [65817-002LF](#) [65817-015LF](#) [65863-015LF](#) [66207-023LF](#) [67016-026LF](#) [67046-001LF](#) [67095-007LF](#) [68002-116](#) [68016-236H](#) [68648-049](#)