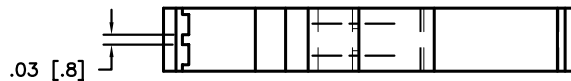
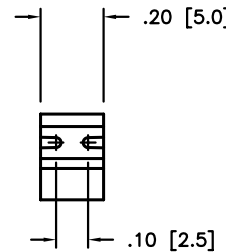
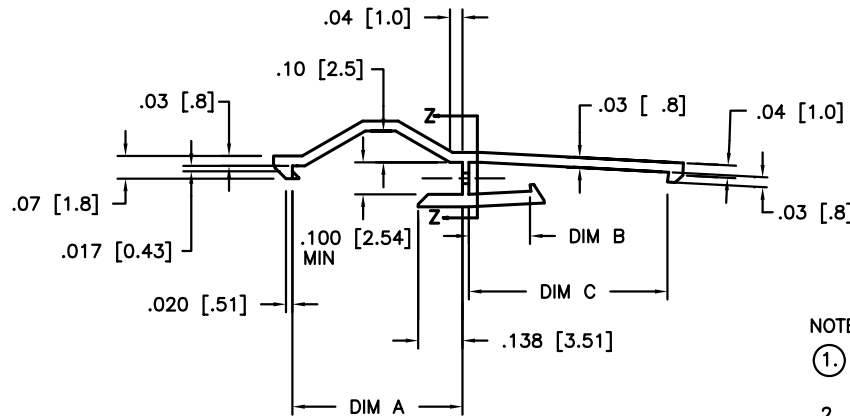


PRODUCT NUMBER	DIM A	DIM B	DIM C	APPLICATION	NOTES
78242-001	.53/13.5	.191/4.85	.62/15.7	MINI LATCH TO CLINCHER	
78242-001LF	.53/13.5	.191/4.85	.62/15.7	MINI LATCH TO CLINCHER	NOTE 3
78242-002	.53/13.5	.157/4.00	.55/14.0	MINI LATCH RECEPTACLE TO MINI LATCH PIN	
78242-002LF	.53/13.5	.157/4.00	.55/14.0	MINI LATCH RECEPTACLE TO MINI LATCH PIN	NOTE 3
78242-003	.59/14.9	.191/4.85	.620/15.7	CLINCHER RECEPTACLE TO CLINCHER PIN	
78242-003LF	.59/14.9	.191/4.85	.620/15.7	CLINCHER RECEPTACLE TO CLINCHER PIN	NOTE 3



NOTES:

1. MATERIAL: PBT, UNREINFORCED, FLAME RETARDANT PER UL94 V-0, COLOR: BLUE.
2. ALWAYS APPLY LATCH TO PIN CONNECTOR FIRST TO FACILITATE ASSEMBLY.
3. PART NUMBERS WITH AN LF SUFFIX MEET EUROPEAN UNION DIRECTIVES AND OTHER COUNTRY REGULATIONS AS DESCRIBED IN GS-22-008.
4. THIS PRODUCT IS NOT INTENDED TO BE EXPOSED TO MANUFACTURING SOLDERING PROCESSES.

mat'l. code SEE NOTE 1				surface ASME Y14.5 ✓ / tolerance ASME Y14.5		projection INCH/MM		product family BERGCON ACCESSORIES	
ltr	ecn no	dr	date	tolerances unless otherwise specified		INCH/MM		title	
C	V40999	HTB	1994-06-18	angles	XX±.01/XX±.03	scale 2:1		LATCH FOR FLYING CONNECTION SINGLE ROW	
D	V41244	HTB	1994-08-24		XXX±.005/XX±0.1			dwg no	
E	V41721	MSC	1994-12-08	0°±2'	XXXX±.0020/XXX±0.051			sheet 1 of 1	
F	V50169	HTB	1995-01-20	dr	M.CLOUSER	1994-06-18		size	
G	V00492	RGD	2000-04-18	engr	T. HANNA	1994-06-18		A4	
H	M06-0213	MHT	2006-06-05	chr	J.MURPHY	1994-06-18		FCI	
J	V06-1200	HTB	2006-12-18	appd	T.HANNA	1994-06-18		type Product Customer Drawing	
sheet	revision	J							
index	sheet	1							

X-ON Electronics

Largest Supplier of Electrical and Electronic Components

Click to view similar products for [Headers & Wire Housings](#) category:

Click to view products by [Amphenol](#) manufacturer:

Other Similar products are found below :

[892-18-020-10-001101](#) [58102-G61-06LF](#) [582553-1](#) [0009485154](#) [009176003701906](#) [0050291907](#) [LY20-4P-DT1-P1E-BR](#) [02.125.8002.8](#)
[609-3404](#) [61062-3](#) [622-0430](#) [622-3653LF](#) [63453-116](#) [636-1030](#) [636-1427](#) [636-3427](#) [636-4007](#) [641938-9](#) [641991-4](#) [644827-2](#) [65817-010LF](#)
[65817-015LF](#) [65863-015LF](#) [66207-023LF](#) [67095-007LF](#) [67601157](#) [68648-049](#) [70.362.1628.0](#) [70-4210](#) [70-4226B](#) [70-4853B](#) [707-5020](#) [707-](#)
[5028](#) [71.350.2428.0](#) [71918-208LF](#) [71961-016LF](#) [733-134](#) [733-162](#) [754199-000](#) [760-3052](#) [787-8014-00](#) [79531-3000](#) [FCN-360C032-B](#) [FCN-](#)
[367T-T012/H](#) [FCN-723D010/2](#) [80.063.4001.1](#) [800-90-001-10-001000](#) [800-90-010-10-002000](#) [801-43-002-10-013000](#) [801-43-006-10-002000](#)