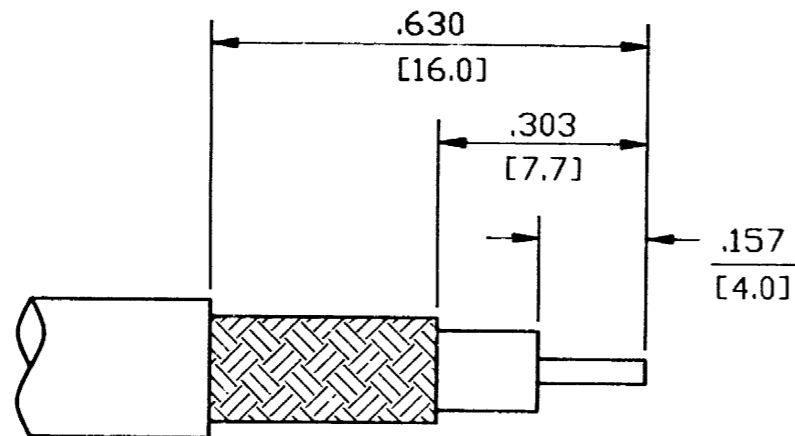


DO NOT SCALE THIS DRAWING

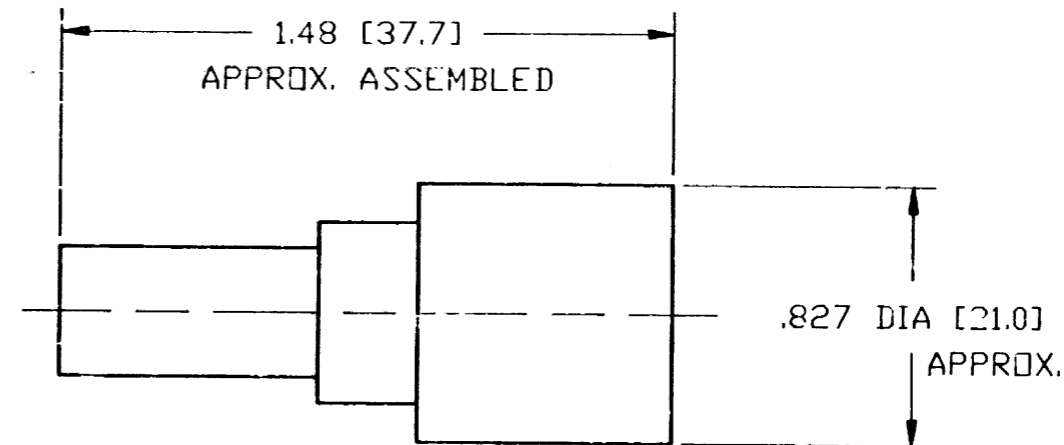
82-4426-11RFX

REVISIONS

| DRAWING NUMBER | SYM | DESCRIPTION                   | DATE     | E.C.O. NO. | APPR. |
|----------------|-----|-------------------------------|----------|------------|-------|
|                | A   | OFFICIAL ENG. RELEASE TO MFG. | 10/29/91 | 38063      | DR    |



RECOMMENDED CABLE STRIPPING DIM'S



NOTES:

1. BRASS BODY, NICKEL PLATED.
2. TEFLON INSULATOR.
3. GOLD PLATED, BRASS CONTACT, .000003.
4. PACKAGED IN BAG 999-377.
5. USE AMPHENOL CRIMP TOOL #CTL-3.
6. CAPTIVATED CONTACT, .090 WIRE ENTRY.
7. 3 PC. (BODY, FERRULE, CONTACT).

ENGLISH [METRIC]

H:\DEPT611\N\082\ASSY\4426\11RFX

| PART NO | QUAN | UOM | DESCRIPTION | CODE | FINISH |
|---------|------|-----|-------------|------|--------|
|---------|------|-----|-------------|------|--------|

LIST OF MATERIAL

REMOVE ALL BURRS, BREAK CORNERS AND SHARP EDGES .005 MAXIMUM UNLESS OTHERWISE SPECIFIED.

| NEXT ASSY | USED ON |
|-----------|---------|
|           |         |

UNLESS OTHERWISE SPECIFIED DIMENSIONS ARE IN INCHES TOLERANCES NOT OTHERWISE SPECIFIED ARE

2 PLACE DECIMAL ± .015 (0.381 mm) 3 PLACE DECIMAL ± .005 (0.127 mm) ANGLES ± 1°

REFERENCE DRAWING NO EAR 962370

|                   |         |
|-------------------|---------|
| DRAWN BY          | DATE    |
| TERRI ALBERA      | 4-29-91 |
| CHECKED           | DATE    |
| ENGINEER          | DATE    |
| QUALITY ASSURANCE | DATE    |
| MFG ENG           | DATE    |

TITLE  
N CRIMP CRIMP PLUG FOR RG-8, 213, 214 & ETHERNET CABLES 50 OHM

Amphenol Corporation  
RF/Microwave Operations  
Danbury, Conn. U.S.A.

NOTICE — These drawings, specifications, or other data (1) are, and remain the property of Amphenol Corp (2) must be returned upon request; and (3) are confidential and are not to be disclosed to any person other than those to whom they are given by Amphenol Corp. The furnishing of these drawings, specifications, or other data by Amphenol Corp., or by any other person to anyone for any purpose is not to be regarded by implication or otherwise as in any manner licensing, granting rights or permitting such holder or any other person to manufacture, use or sell any product, process or design, patented or otherwise, that may in any way be related to or disclosed by said drawings, specifications or other data

|           |          |                     |              |               |       |
|-----------|----------|---------------------|--------------|---------------|-------|
| SCALE NTS | SHEET OF | CODE IDENTIFICATION | DRAWING SIZE | DRAWING NO    | ISSUE |
|           |          | 74968               | B            | 82-4426-11RFX | A     |

Design Products Co. Inc. Clearprint #1020

## X-ON Electronics

Largest Supplier of Electrical and Electronic Components

*Click to view similar products for [RF Connectors / Coaxial Connectors](#) category:*

*Click to view products by [Amphenol](#) manufacturer:*

Other Similar products are found below :

[8915-1511-000](#) [89674-0827](#) [6001-7071-019](#) [6002-7051-003](#) [6002-7551-202](#) [6059674-1](#) [619550-1](#) [630059-000](#) [M39030/3-01N](#) [M3933/25-36N](#) [6500-7071-046](#) [6769](#) [CX050L2AQ](#) [7002-1542-011](#) [7004-1512-000](#) [7009-1511-004](#) [7010-1511-000](#) [7029-1511-060](#) [7101-1541-010](#) [7101-1571-002](#) [7105-1521-002](#) [7145-1521-002](#) [7203-1571-003](#) [7209-1511-011](#) [7210-1511-015](#) [7210-1511-019](#) [73137-5015](#) [73216-2241](#) [7325-1512-000](#) [73404-2300](#) [7405-1521-005](#) [7405-1521-802](#) [7406-1521-005](#) [8527](#) [8547](#) [FS11V](#) [8808-1511-001](#) [9049-9513-000](#) [9074-9513-000](#) [9101-9573-002](#) [910A205F](#) [9130-9573-002](#) [PL11SC-026](#) [PL375-33](#) [PL40-5](#) [PL71-9](#) [PL74C-221](#) [PL75MC-217](#) [PL803-7](#) [980-8666-005](#)