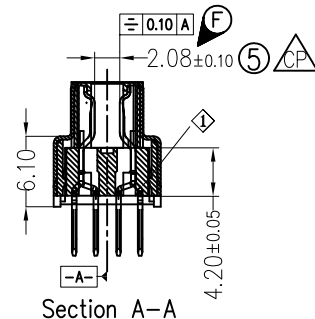
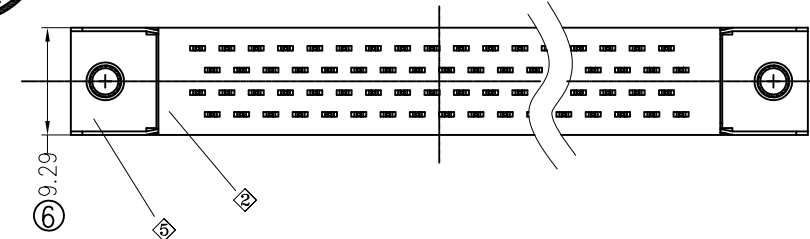
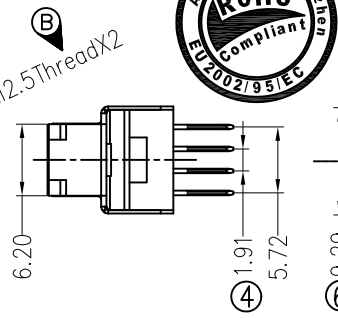
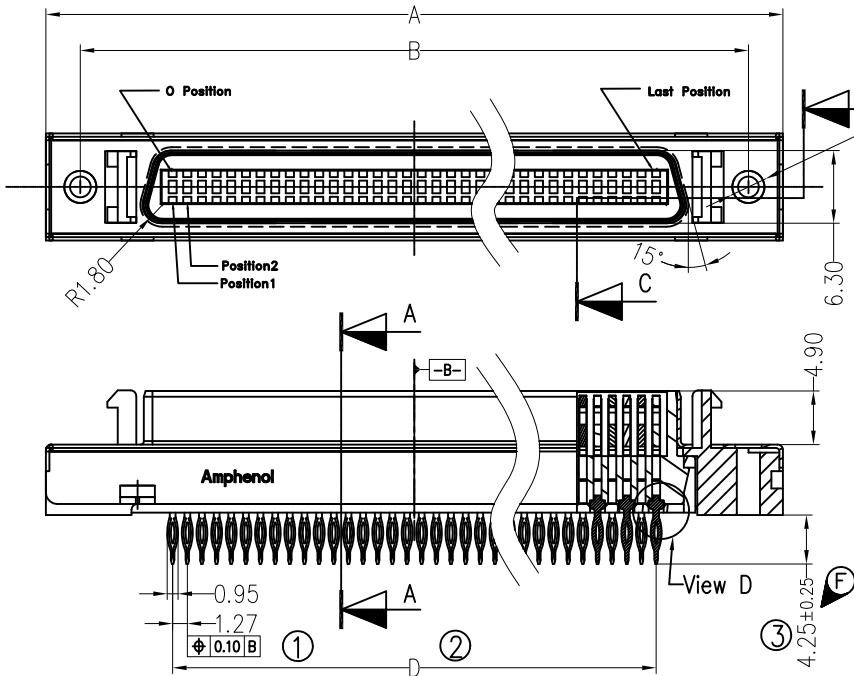
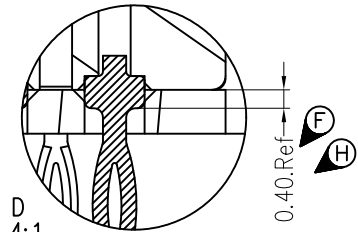
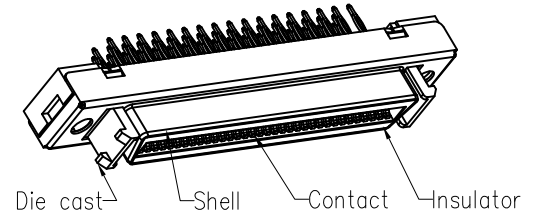
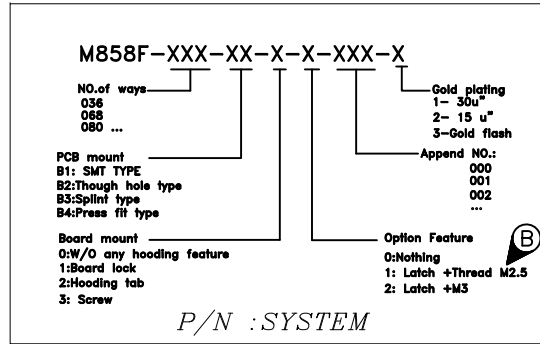
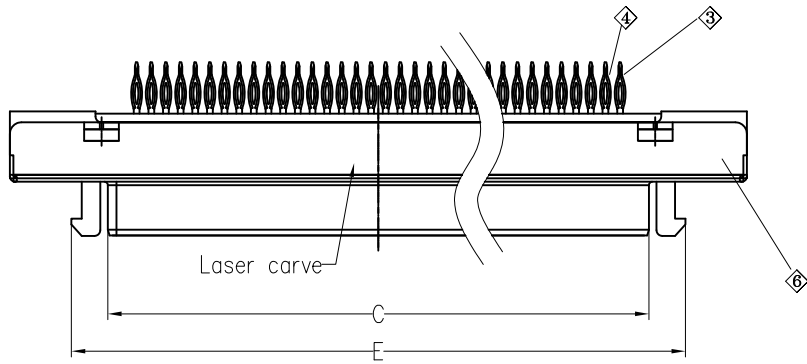


Manufacturing Drawing

This document is the property of Amphenol Corporation and is delivered on the express condition that it is not to be disclosed, reproduced or used, in whole or in part, for manufacture or sale by anyone other than Amphenol Corporation without its prior consent, & that no right is granted to disclose or to use any information in this document.

- # Checked for production;
- CP Critical dimension.

REVISIONS				
SYM	ECN	DESCRIPTION	DATE	APPROVED
E	HK4264	change contact DIM. 1.95±0.10 to 2.18±0.10	01/22/07	IP
F	HK4333	change tail pin DIM. 0.40+0.07/-0.03 to 0.40+0.07/-0.05	03/13/07	IP
G	HK4505	Del. view B	06/19/07	IP
H	HK6398	0.40.Ref was 0.40+0.07/-0.05	12/16/10'	IP



Contact Quantity	Dimensions						
	A	B	C	D	E	F	G
36	43.50	37.60	26.60	21.59	33.50	33.90	37.61
68	63.80	57.90	46.90	41.91	53.80	54.20	57.93
80	71.50	65.60	54.50	49.53	61.50	61.90	65.55

F/G,P/N	858-F036-B401-002X	858-F068-B401-002X	858-F080-B401-002X			
ITEM NO.	P/N	Quantity	P/N	Quantity	P/N	Quantity
① Housing A	858-F036-B4-BY-001	1	858-F068-B4-BY-001	1	858-F080-B4-BY-001	1
② Housing B	858-F036-B4-BY-002	1	858-F068-B4-BY-002	1	858-F080-B4-BY-002	1
③ Terminal A	858-F-B4-CN-001- Gold Plating: X=1-30 u" X=2-15 u" X=3-G/P	18	858-F-B4-CN-001- Gold Plating: X=1-30 u" X=2-15 u" X=3-G/P	34	858-F-B4-CN-001- Gold Plating: X=1-30 u" X=2-15 u" X=3-G/P	40
④ Terminal B	858-F-B4-CN-002- X=3-G/P	18	858-F-B4-CN-002- X=3-G/P	34	858-F-B4-CN-002- X=3-G/P	40
⑤ Diecast	858FBR0-036-46	1	858FBR0-068-46	1	858FBR0-080-46	1
⑥ shell	858-F036-B4-SH-001	1	858-F068-B4-SH-001	1	858-F080-B4-SH-001	1

UNLESS OTHERWISE SPECIFIED TOLERANCES		APPROVAL		DATE	
U.S.	METRIC	DRAWN	Bin Di	12/16/10'	
.X +/-	0.50	CHECKED	Tony Tang	12/16/10'	
.XX +/-	0.15	CHECKED			
.XXX +/-	0.09				
FRACTIONS +/-	1'				
ANGLES +/-					
FOR MATERIALS AND FINISHES SEE NOTES		DRAWING FILE : \DRAWING\USA\M858F\2008041002X-4L090			
REMOVE SHARP EDGES		ANGLE OF PROJECTION			
DIMENSIONS					
U.S.	INCHES				
METRIC	MM				

Amphenol

TITLE: 858 Receptacle Connector, 1.27mm PRESS FIT (Die cast),

SIZE: A3 DRAWING NO. M858-FXXX-B401-002X REV. H

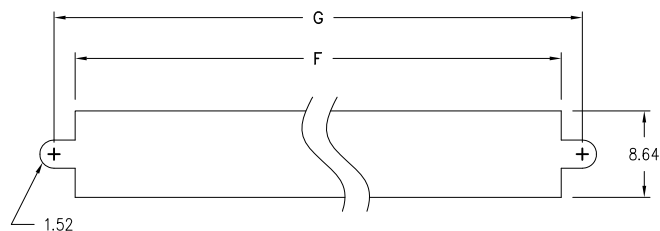
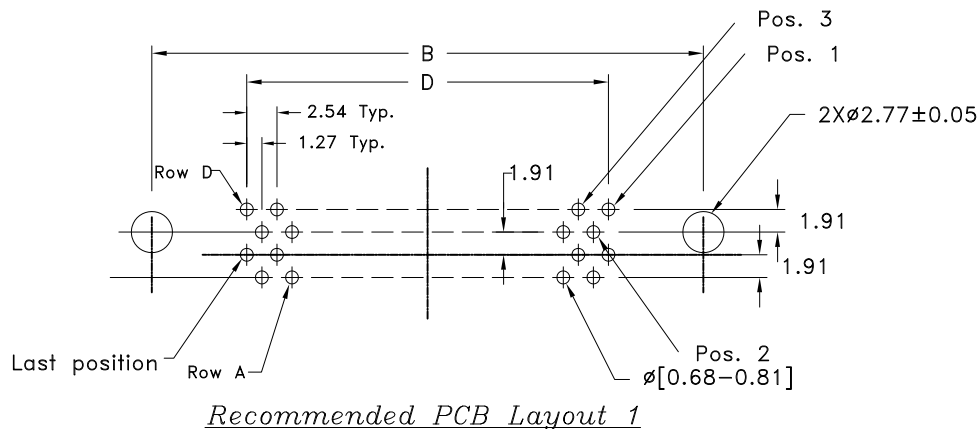
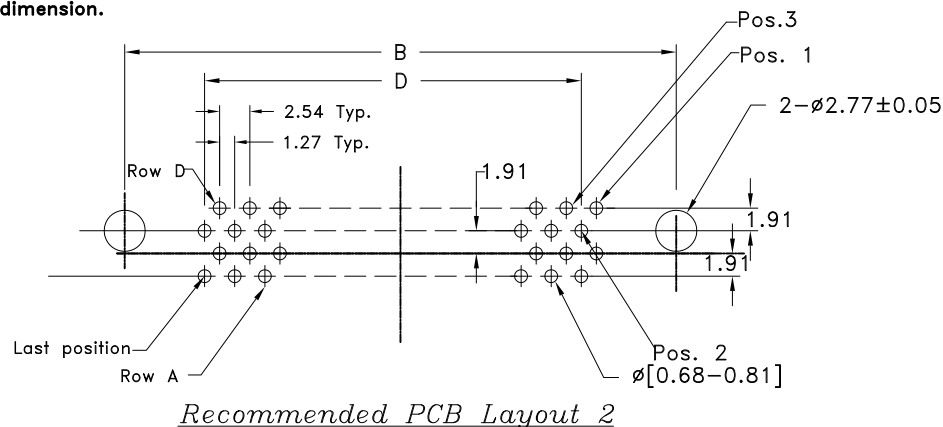
SCALE: NONE SHEET 1 OF 2

This document is the property of Amphenol Corporation and is delivered on the express condition that it is not to be disclosed, reproduced or used, in whole or in part, for manufacture or sale by anyone other than Amphenol Corporation without its prior consent, & that no right is granted to disclose or to use any information in this document.

Manufacturing Drawing

- # Checked for production;
- △ Critical dimension.

REVISIONS				
SYM	ECN	DESCRIPTION	DATE	APPROVED
REFER TO SHEET 1				



Note: Panel thickness 2.00 mm MAX.

Note:

1. All dimensions are in mm.
2. Materials
 - Contact: Phosphor Bronze,
 - Gold plated on mating area, thickness refer to P/N system.
 - gold flash plated on termination area (H)
 - 1.27 MIN. Nickel underplated
 - Shell: Cold Roll Steel,
 - 5.08 MIN. Nickel plated.
 - Insulator: PPA, color black, UL94V-0 rated.
 - Plate: PBT, color black, UL94V-0 rated.
 - Die Cast: ZN alloy.
 - 1.27-3.81µm Nickel plated with copper underplated 4µm MIN.

3. Mechanical Characteristics

- Durability: 500 cycles min. for 0.76µm gold
- 250 cycles min. for 0.38µm
- 50 cycles min. for gold flash

Contact Retention Force 4.4 N min. per contact with insulator

- Mating force: 1.50 N Max/contact (H)
- Unmating force: 0.20 N Max/contact

Insertion force for press fit: 147N/pin MAX.

4. Electrical Characteristics

- Contact Rating: 1 A.
- Contact Resistance: 25 mΩ Max.
- Insulation Resistance: 1000 MΩ Min. at 500 VDC
- Operation Temperature: -55°C to 75°C
- Dielectric Strength: 500 VAC

5. Suitable for PCB with a nominal thickness of 2.40mm to 3.18mm.

6. Material should be fulfilled Amphenol Spec.# SSN002.

- △ Critical Parameter. Supplier must meet minimum CPK of 1.33 where applicable.
- Critical Dimension should be measured.

UNLESS OTHERWISE SPECIFIED TOLERANCES	APPROVAL		DATE	Amphenol
	U.S.	METRIC	DRAWN Bin Di 12/16/10'	
.X +/- 0.50			CHECKED Tony Tang 12/16/10'	TITLE 858 Receptacle Connector, 1.27mm PRESS FIT (Die cast),
.XX +/- 0.15			CHECKED	
.XXX +/- 0.09				DRAWING FILE: DRAWING\858\858F200B41002X-1L.DWG
FRACTIONS +/- 1'				
ANGLES +/-				SIZE DRAWING NO. A3 M858-FXXX-B401-002X
FOR MATERIALS AND FINISHES SEE NOTES	REMOVE SHARP EDGES		ANGLE OF PROJECTION	SCALE NONE SHEET 2 OF 2
	DIMENSIONS			
U.S.	INCHES			REV. H
METRIC	MM			

X-ON Electronics

Largest Supplier of Electrical and Electronic Components

Click to view similar products for [D-Sub Micro-D Connectors](#) category:

Click to view products by [Amphenol](#) manufacturer:

Other Similar products are found below :

[89076GBEPR](#) [65-1920-15](#) [M83513/03-G12N](#) [M83513/04-E15N](#) [M83513/04-G04C](#) [664020C06F060](#) [6R2004A30F015](#) [6R4006A28A120](#)
[703006A13F060](#) [704002A03F200](#) [705001A13F120](#) [71-147714-19P](#) [7-1532020-5](#) [748567-1-P](#) [MDB1-9SH001](#) [MDM-100PH003L](#) [MDM-](#)
[15PBS-L58](#) [MDM-15PCBRM7T](#) [MDM-15PH001M7-A174](#) [MDM-15PH003B-A174](#) [MDM-15SH003A](#) [MDM-15SH004B](#) [MDM-](#)
[15SH006A-A174](#) [MDM-15SH048B](#) [MDM-25PH003B-A174](#) [MDM-25SH003F](#) [MDM-25SH003K](#) [MDM-31PH003L](#) [MDM-37PH006L-A174](#)
[MDM-37SH003K](#) [MDM51PH016FA174](#) [MDM-51PSF](#) [MDM-9PH003M7](#) [MDM-9PH003P-A174](#) [MDM-9SH001P](#) [MDM-9SH006B](#) [790-](#)
[027SH-10P4MEP](#) [790-041PJ-25P2MPA](#) [790-043PJ-7P7MPB](#) [791-004SH-66MSA](#) [7R3A00A19A1201](#) [7R5006A19A120](#) [803000C02M020](#)
[803001B02M040](#) [803001D01M040](#) [8030N1A09M020](#) [804001B03M100](#) [804006B03M100](#) [804006C02M030](#) [MLDM2L-21SCBRP-.110](#)