

COUPE AA

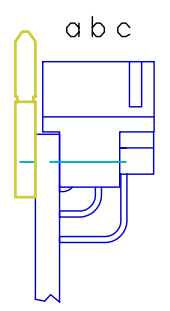
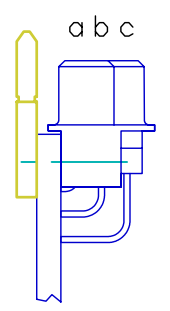
PACKAGING	REF:	Qty
PLASTIC BAG	SACHET 350X200	100
SHIPPING BOX	C2	1

NOTE: RoHS INFORMATIONS

- The "LF" product meets European union Directives and other country regulations as described in GS-22-008.
- The product is not intended to be exposed to a manufacturing solder process.
- Packaging spec: see GS-14-920.

REVERSE FEMALE ( TYPE R )

STANDARD MALE ( TYPE C )



Recommended accessory :

Screws and nuts : M 2.5 x 12

Part number **8609-153-003LF**

European Views

www.fciconnect.com		surface ISO 1302 ✓	tolerance std ISO 406 ISO 1101	projection mm
TOLERANCES UNLESS OTHERWISE SPECIFIED				
ANGULAR	LINEAR	0.X	±0.1	size A3
0.XX' ±2'		0.XX	±0.1	Scale 2
Dr	ROUILLARD	2005/10/12	ECN	LS06-0139
Eng	TARON	2005/10/12	Product family	DIN 8609
Chr	LEGARE	2005/10/12	Spec ref	-
Appr	LEGARE	2005/10/12		
FCI title		SEPARATE POLARIZING BAR		Rev.
for plug connectors		C-8609-1190		C
catalog no	-	dwg no	CUSTOMER sheet 1 of 1	

rev	ecn no	dr	date
A	LS05-0086	HLE	2005/10/12
B	LS06-0095	LGO	2006/06/28
C	LS06-0139	HLE	2006/09/22
-	-	-	-
-	-	-	-
-	-	-	-
-	-	-	-

Copyright FCI. FCI

## X-ON Electronics

Largest Supplier of Electrical and Electronic Components

*Click to view similar products for [DIN 41612 Connectors](#) category:*

*Click to view products by [Amphenol](#) manufacturer:*

Other Similar products are found below :

[09231126901](#) [PCN10F-24P-2.54DS\(72\)](#) [004.767](#) [02221602702](#) [024069](#) [602427301412000](#) [013275](#) [691327-1](#) [74670-0732](#) [74680-0340](#)  
[75880-0015](#) [76453-0014](#) [86093159ALF](#) [923454](#) [QLC260R](#) [120X10099X](#) [120X10019X](#) [120X10089X](#) [120X10129X](#) [121A10039X](#)  
[121A10309X](#) [122A10019X](#) [122A10029X](#) [122A10249X](#) [122A10669X](#) [122A11089X](#) [122A13089X](#) [121B10409X](#) [122A10089X](#)  
[122A10129X](#) [122A10349X](#) [122A13359X](#) [1377391-4](#) [DIN-048CPC-SR1-MH](#) [1393583-2](#) [1393726-7](#) [140X10059X](#) [140X10129X](#) [143-1913-](#)  
[000](#) [143-1908-000](#) [1484472-1](#) [173052](#) [2110070-1](#) [2110070-2](#) [CBC20T00-008FDS5-0-1-002VR](#) [983-0SE12-12P6](#) [17041102202](#) [172699-](#)  
[5036](#) [173051](#) [20](#) [8457096](#) [010](#) [025](#)