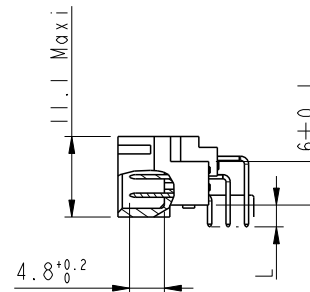
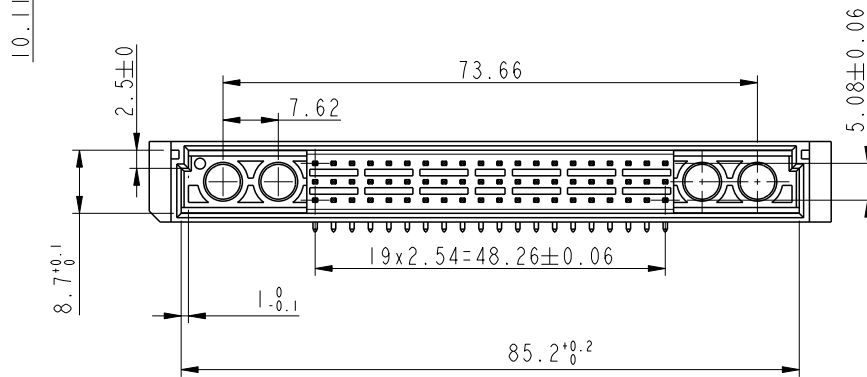
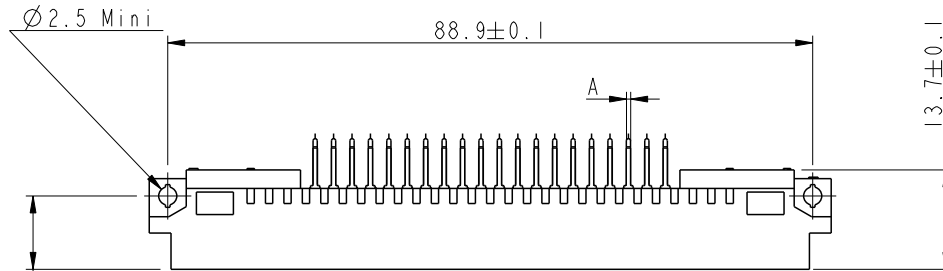
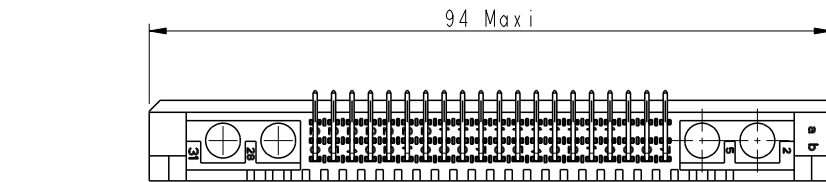
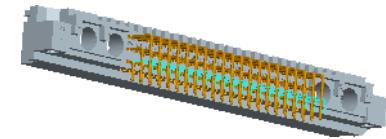




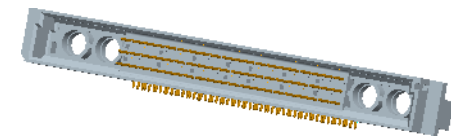
Copyright FCI.



SECTION A-A



SCALE 1:1



SCALE 1:1

PART-NUMBERS See Scheet 2.

GENERAL CHARACTERISTICS and ROHS INFORMATIONS
SEE DRAWING C-8609-0000A

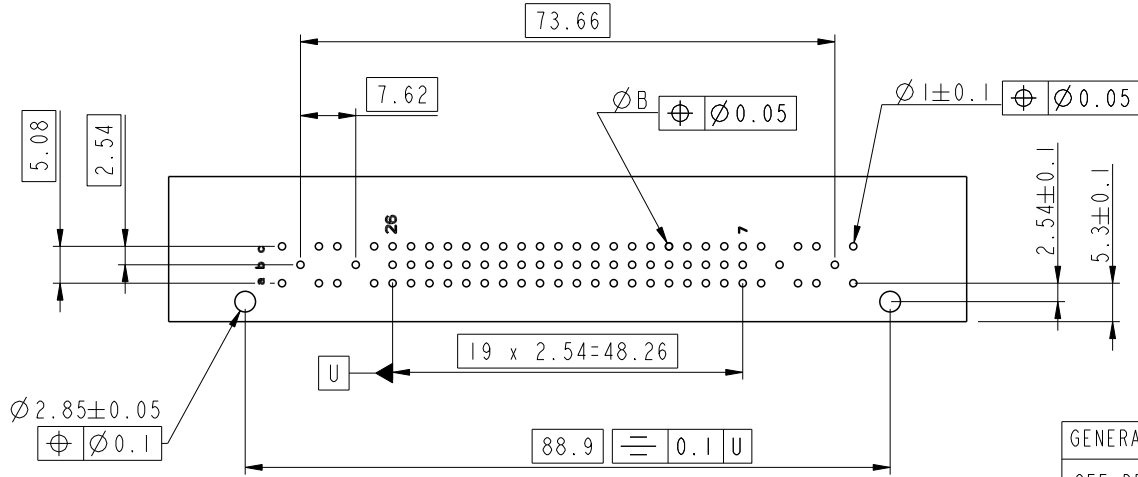
rev	ecn no	dr	date
D	-	ROU	2002/08/30
E	LS05-001	JTA	2005/03/04
F	LS06-0097	LGO	2006/07/11
G	LS08-0169	HLE	2008/08/09
-	-	-	-
-	-	-	-

www.fciconnect.com		surface - ✓	tolerance std	projection	mm
		ISO 1302	ISO 406 ISO 1101		
		TOLERANCES UNLESS OTHERWISE SPECIFIED			
Dr	ROUILLARD	16/09/1992	ANGULAR	0.X ±0.3	size A3
Eng	J. TARON	16/09/1992	LINEAR	0.XX ±0.1	Scale 3:2
Chr	P. LEGARE	16/09/1992	0° ±2°	0.XXX ±0.05	ECN LS08-0169
Appr	P. LEGARE	16/09/1992	Product family	-	Spec ref -
	8609 SERIE STYLE M		dwg no	C-8609-0308	Rev. G
	STANDARD MALE 3 ROW				
	catalog no 8609 xxx xl 13x 7x5 EILF		CUSTOMER	sheet 1 of 2	

REV F - 2006-04-17

PART NUMBER	8609	<input type="checkbox"/>	<input type="checkbox"/>	C I	<input type="checkbox"/>	<input type="checkbox"/>	5	<input type="checkbox"/>
PIN OUT								
rows a-b-c	-----	3	60					
rows a-c	-----	4	40					
NUMBER OF CONTACTS								
TERMINATION								
L = 2.75 ± 0.15 (.108)	A = ∅0.6 ⁰ _{-0.08}	B = ∅0.8 ⁰ _{+0.3}	13					
L = 4.15 ± 0.15 (.163)	A = 0.6X0.6	B = ∅1 ± 0.1	23					
no option	-----	7						
with harpoons	----- for PCB thickness 1.6 mm	H						
DIN 41612 class 3	-----	4						
DIN 41612 class 2	-----	5						
DIN 41612 class 1	-----	6						
TERMINATION TYPE								
TIN LEAD	-----						000E1	
LEAD FREE	-----						E1LF	

PCB DRILLING
Component side



GENERAL CHARACTERISTICS AND ROHS INFORMATIONS:
SEE DRAWING C-8609-0000A

European Views

www.fciconnect.com			surface - <input checked="" type="checkbox"/>	tolerance std	projection	mm
			ISO 1302	ISO 406 ISO 1101		
			TOLERANCES UNLESS OTHERWISE SPECIFIED			
Dr	ROUILLARD	16/09/1992	ANGULAR	LINEAR	0.X ± 0.3	size A3 Scale 3:2
Eng	J. TARON	16/09/1992			0.XX ± 0.1	
Chr	P. LEGARE	16/09/1992	0° ± 2°		0.XXX ± 0.05	ECN LS08-0169
Appr	P. LEGARE	16/09/1992	Product family		- Spec ref -	
	title 8609 SERIE STYLE M				dwg no	Rev.
	STANDARD MALE 3 ROW				C-8609-0308	G
	catalog no 8609 xxx xl 13x 7x5 E1LF			CUSTOMER	sheet 2 of 2	

REV 1 - 2006-04-17

Copyright FCI

X-ON Electronics

Largest Supplier of Electrical and Electronic Components

Click to view similar products for [DIN 41612 Connectors](#) category:

Click to view products by [Amphenol](#) manufacturer:

Other Similar products are found below :

[004.767](#) [608489050008049](#) [691327-1](#) [74670-0732](#) [74680-0340](#) [75880-0015](#) [76453-0014](#) [86093159ALF](#) [9732967801](#) [QLC260R](#)
[120X10019X](#) [120X10089X](#) [122A10249X](#) [122A10669X](#) [122A11089X](#) [122A13089X](#) [122A10089X](#) [122A10129X](#) [122A10349X](#)
[122A13359X](#) [1377391-4](#) [DIN-048CPC-SR1-MH](#) [1393583-2](#) [1393726-7](#) [140X10129X](#) [143-1913-000](#) [143-1908-000](#) [1484472-1](#) [2110070-1](#)
[2110070-2](#) [CBC20T00-008FDS5-0-1-002VR](#) [172699-5036](#) [2-1393557-4](#) [2-1437084-2](#) [CTJ720E01B-6141](#) [394506](#) [419-2080-402](#)
[V42254B2202C968](#) [419-2086-201](#) [419-2087-002](#) [448657-1](#) [448847-3](#) [5-1393755-9](#) [02990000004](#) [054302](#) [043556](#) [09062483201750](#)
[0850033067](#) [09031646555](#) [09061486901840](#)