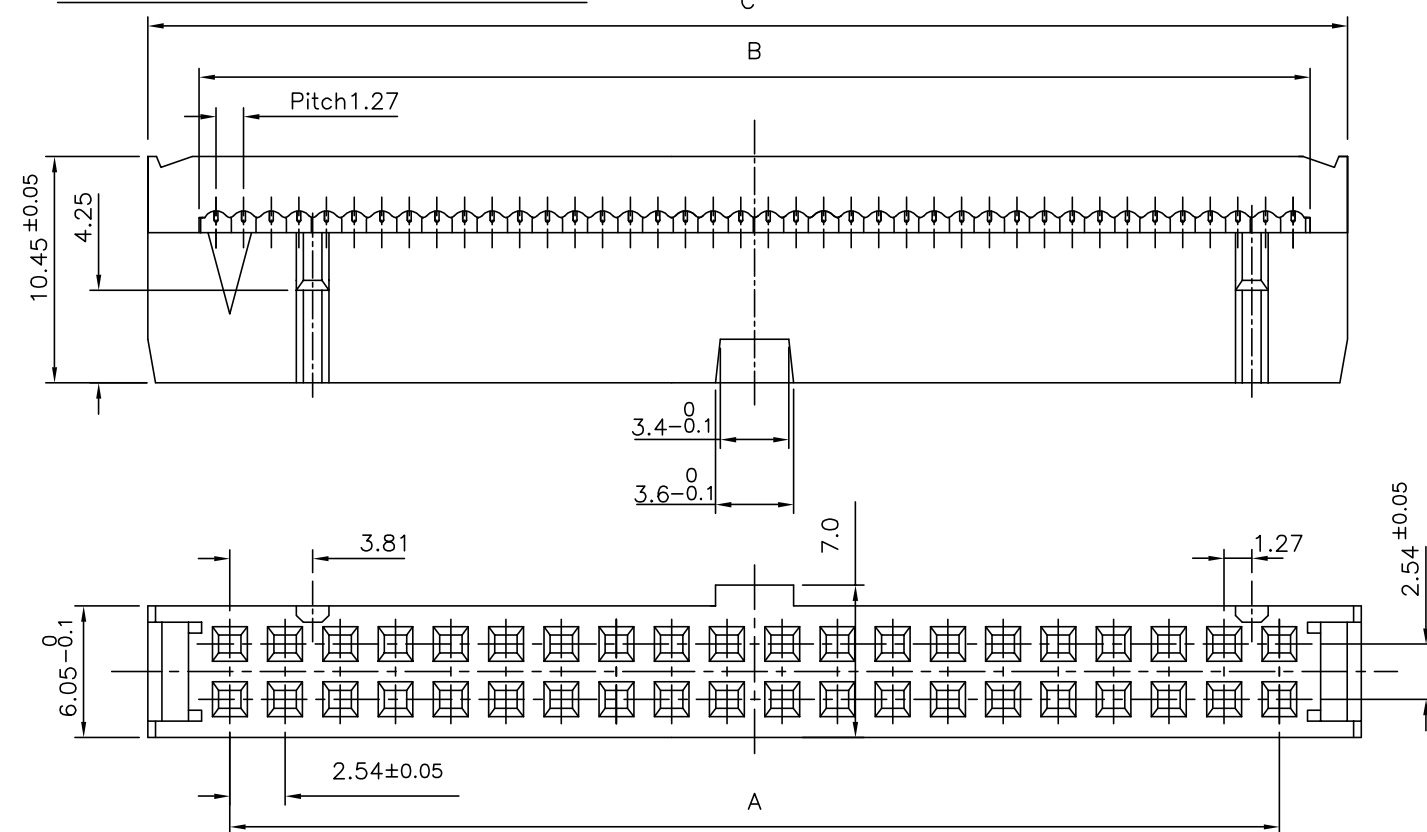
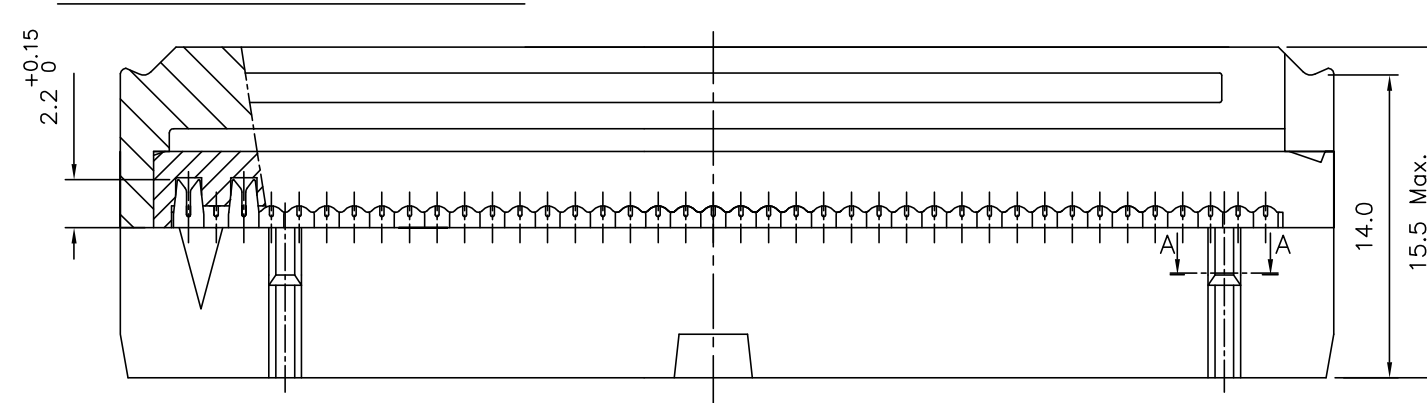


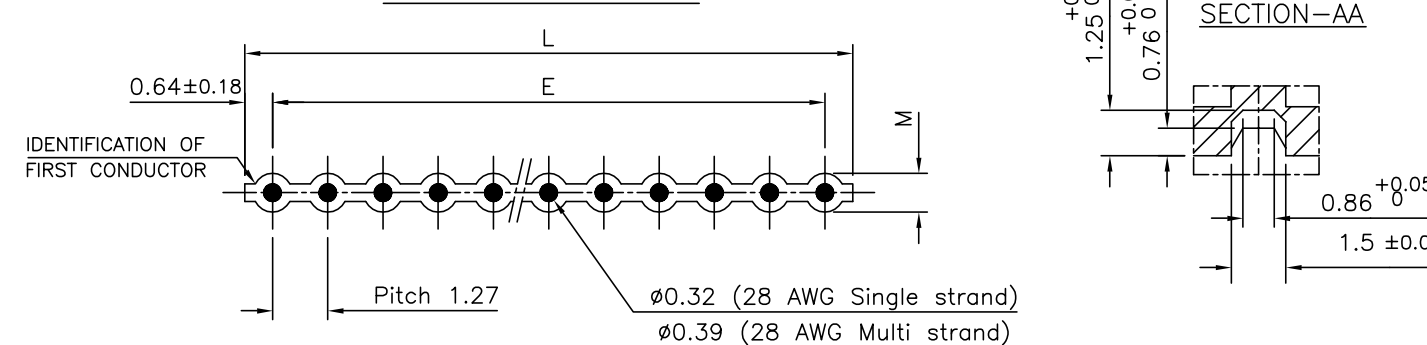
WITHOUT STRAIN RELIEF CLAMP



WITH STRAIN RELIEF CLAMP



CABLE DIMENSIONS



NOTES:-
 1. THE "LF" PRODUCTS MEET EUROPEAN UNION DIRECTIVES AND OTHER COUNTRY REGULATIONS AS DESCRIBED IN GS-22-008
 2. LEAD FREE OR RoHS DIRECTIVE LABELING TO BE PROVIDED AS PER GS-14-920 FOR RoHS COMPATIBLE VERSION.

Number of contacts	64	78.74	81.58	86.08	80.01	81.28	0.89
	60	73.66	76.50	81.00	74.93	76.20	0.89
	50	60.96	63.80	68.30	62.23	63.50	0.89
	40	48.26	51.10	55.60	49.53	50.80	0.89
	A ±0.05	B ^{+0.1} _{-0.1}	C ±0.1	E ±0.2	L ±0.32	M ±0.13	

Dimensions

ORDERING INFORMATION

8613 0 4 0 3 0 3 0 3 5 5

SERIES: 8613
 NO.OF CONTACTS :- 0, 4, 0, 3, 0, 3, 0, 3, 5, 5
 40,50,60,64
 3 - FEMALE WITH CENTRAL POLARISING
 0 - WITHOUT STRAIN RELIEF CLAMP
 1 - WITH STRAIN RELIEF CLAMP
 TYPE OF TERMINATION
 30 - INSULATION DISPLACEMENT 28 GAUGE

SPECIAL CODE
 000 - TIN LEAD VERSION
 E1LF - LEAD FREE VERSION

LONGITUDINAL PITCH
 5 - 2.54 mm

PERFORMANCE CLASS
 4 - DIN 41651 CLASS 3
 5 - DIN 41651 CLASS 2
 6 - DIN 41651 CLASS 1
 8 - AS PER JSS 50810

INSULATOR MATERIAL
 3 - PBT GREY

TECHNICAL SPECIFICATION

HOUSING MATERIAL : THERMOPLASTIC POLYESTER UL 94V0; GREY
 CONTACT MATERIAL : COPPER ALLOY
 PLATING : ACTIVE ZONE - GOLD OVER NICKEL
 : TERMINATION ZONE - SnPb OVER Ni FOR TIN LEAD VERSION.
 : - Sn (MATTE TIN) OVER Ni FOR LEAD FREE VERSION.

CURRENT RATING : 1.5A AT 20°C
 INSULATION RESISTANCE AT 500Vdc : ≥5000 MΩ at 100V
 CONTACT RESISTANCE : ≤20 mΩ
 DIELECTRIC WITHSTANDING VOLTAGE : 1000 Vrms
 OPERATING TEMPERATURE : -55°C TO +125°C
 REFERENCE SPECIFICATION : IEC 603-13 / DIN 41651

mat'l. code		surface		tolerance		projection		product family	
-		ISO 1302		ISO 406 ISO 1101				8613	
litr		ecn no		dr		date		title	
A		-		YMP		1998-12-06		FEMALE CONNECTOR	
B		-		MINI		2002-04-22		FLAT CABLE 8613 SERIES	
C		I06-0066		MINI		2006-06-01		scale -	
D		I06-0173		MINI		2006-09-15		dwg no	
				enr		P.S.JOHNS		sheet 1 of 1	
				chr		RAKHEE GEORGE		size	
				appd		RAKHEE GEORGE		A3	
sheet index		revision sheet		D				type	
1		1		1				Product Customer Drawing	

X-ON Electronics

Largest Supplier of Electrical and Electronic Components

Click to view similar products for [Headers & Wire Housings](#) category:

Click to view products by [Amphenol](#) manufacturer:

Other Similar products are found below :

[892-18-020-10-001101](#) [58102-G61-06LF](#) [582553-1](#) [0009485154](#) [009176003701906](#) [0050291907](#) [LY20-4P-DT1-P1E-BR](#) [02.125.8002.8](#)
[609-3404](#) [61062-3](#) [622-0430](#) [622-3653LF](#) [63453-116](#) [636-1030](#) [636-1427](#) [636-3427](#) [636-4007](#) [641938-9](#) [641991-4](#) [644827-2](#) [65817-010LF](#)
[65817-015LF](#) [65863-015LF](#) [66207-023LF](#) [67095-007LF](#) [67601157](#) [68648-049](#) [70.362.1628.0](#) [70-4210](#) [70-4226B](#) [70-4853B](#) [707-5020](#) [707-](#)
[5028](#) [71.350.2428.0](#) [71918-208LF](#) [71961-016LF](#) [733-134](#) [733-162](#) [754199-000](#) [760-3052](#) [787-8014-00](#) [79531-3000](#) [FCN-360C032-B](#) [FCN-](#)
[367T-T012/H](#) [FCN-723D010/2](#) [80.063.4001.1](#) [800-90-001-10-001000](#) [800-90-010-10-002000](#) [801-43-002-10-013000](#) [801-43-006-10-002000](#)