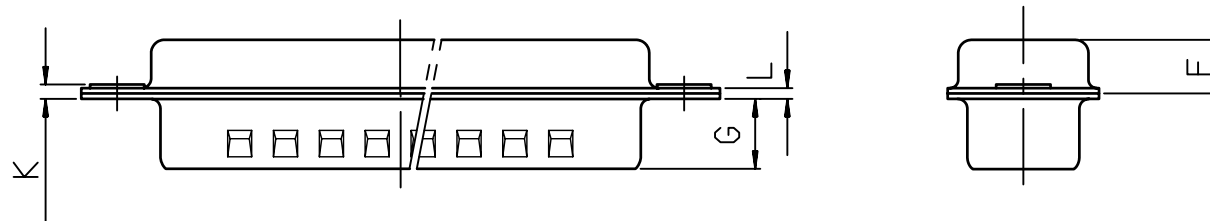
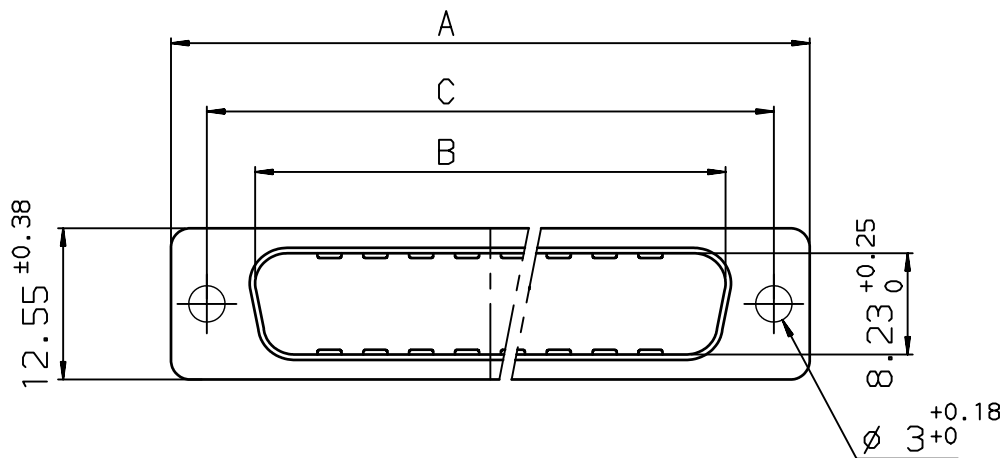


NOTE
Sealed caps IP 65 .



Shell size	Number of contacts	A ^{+0.76} ₀	B ^{+0.25} ₀	C ±0.12	F ^{+0.13} _{-0.03}	G	K	L ^{+0.22} ₀	Part number
E	09	30.43	16.79	24.99	4.36	5.90 ^{+0.15} ₀	1.00 ^{+0.30} ₀	0.80	86553138TLF
A	15	38.76	25.12	33.32	4.36	5.90 ^{+0.15} ₀	1.00 ^{+0.30} ₀	0.80	86553139TLF
B	25	52.65	38.84	47.04	4.36	5.70 ^{+0.25} ₀	1.00 ^{+0.30} ₀	0.80	86553140TLF
C	37	68.94	55.30	63.50	4.36	5.70 ^{+0.25} ₀	1.27 ^{+0.30} ₀	1.00	86553141TLF

European Views

NOTE: RoHS INFORMATIONS

- The "LF" product meets European union Directives and other country regulations as described in 65-22-008.
- The product is not intended to be exposed to a manufacturing solder process.
- Plating: Sn pure bright over Copper.
- Packaging spec: see 65-14-920.

www.fciconnect.com		surface ISO 1302 ✓	tolerance std ISO 406 ISO 1101	projection 	mm
TOLERANCES UNLESS OTHERWISE SPECIFIED					
ANGULAR	LINEAR	0.X	±0.1	size A3	Scale 3
0.XX	±2'	0.XX	±0.1	ECN	LS09-0006
0.XXX		0.XXX	±0.1	Product family	D-SUB
				Spec ref	-
	title PINS METAL CAPS		dwg no	C01-8655-1632	
	D SUB ACCESSORIES		Rev.	C	
catalog no			CUSTOMER	sheet 1 of 1	

rev	ecn no	dr	date
A	LS05-0123	L60	2006/01/12
B	LS06-0095	L60	2006/06/23
C	LS09-0006	PCR	2009/01/08
-	-	-	-
-	-	-	-
-	-	-	-
-	-	-	-

Dr	GOISNARD	2006/01/12
Eng	PESSON	2006/01/12
Chr	LEGARE	2006/01/12
Appr	LEGARE	2006/01/12

X-ON Electronics

Largest Supplier of Electrical and Electronic Components

Click to view similar products for [D-Sub Tools & Hardware](#) category:

Click to view products by [Amphenol](#) manufacturer:

Other Similar products are found below :

[173112-0667](#) [173112-0759](#) [173112-0967](#) [173112-0291](#) [173112-0456](#) [000-01-09-132](#) [000-01-21-132](#) [000-01-31-162](#) [572019-00105-70](#)
[000-01-37-162](#) [621-250-113-115](#) [D20418-2R](#) [D20418-J3F](#) [70521CLF](#) [70524BLF](#) [70527BLF](#) [70527CLF](#) [F1042-1PLAH](#) [750643-1](#) [780-010-06G4-00C](#) [780-518-50SG6-WS](#) [863004ATLF](#) [86552009](#) [86553115TLF](#) [86553117TLF](#) [86553156LF](#) [FSGK1/5](#) [980-8554-000](#) [980-8555-000](#)
[980-8557-000](#) [980-8558-000](#) [1230032-1](#) [1-5021101-2](#) [15-000050](#) [1589283-4](#) [160-000-005R031](#) [16-000230](#) [160-020-109R000](#) [160-025-004R031](#) [160-015-003R031](#) [160-020-209R000](#) [160X10909X](#) [164C03939A](#) [177-505-A-2-2](#) [177-505-C-4-4](#) [179-013-1H](#) [1-966830-8](#) [21018-6](#)
[21028-3](#) [213622-5](#)