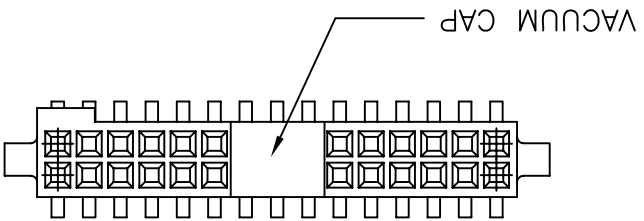
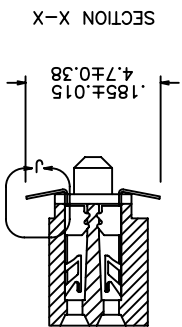
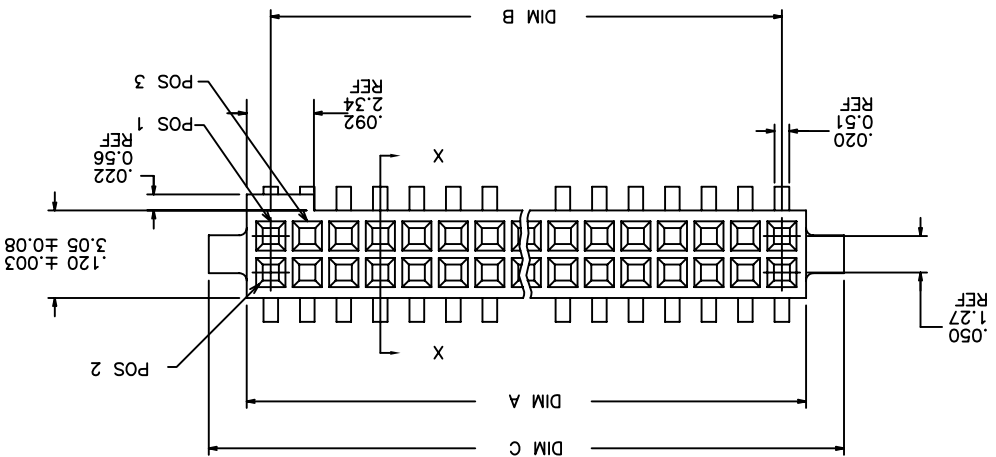
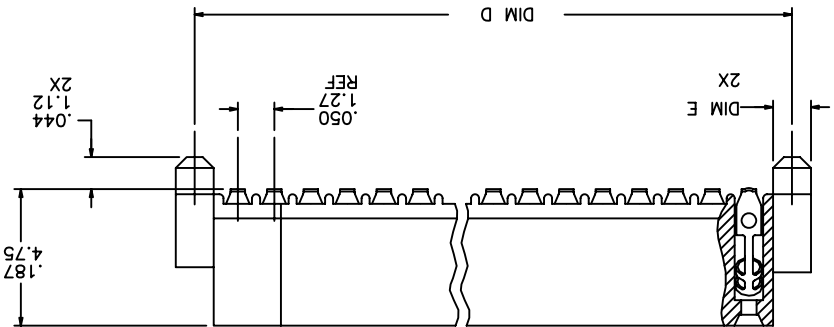
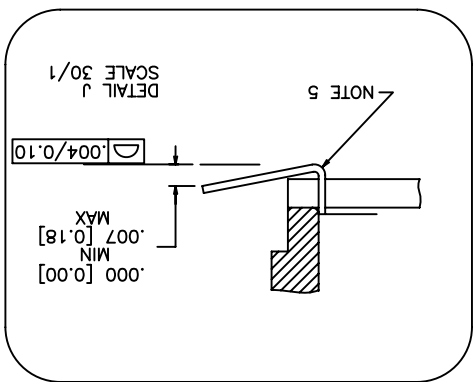
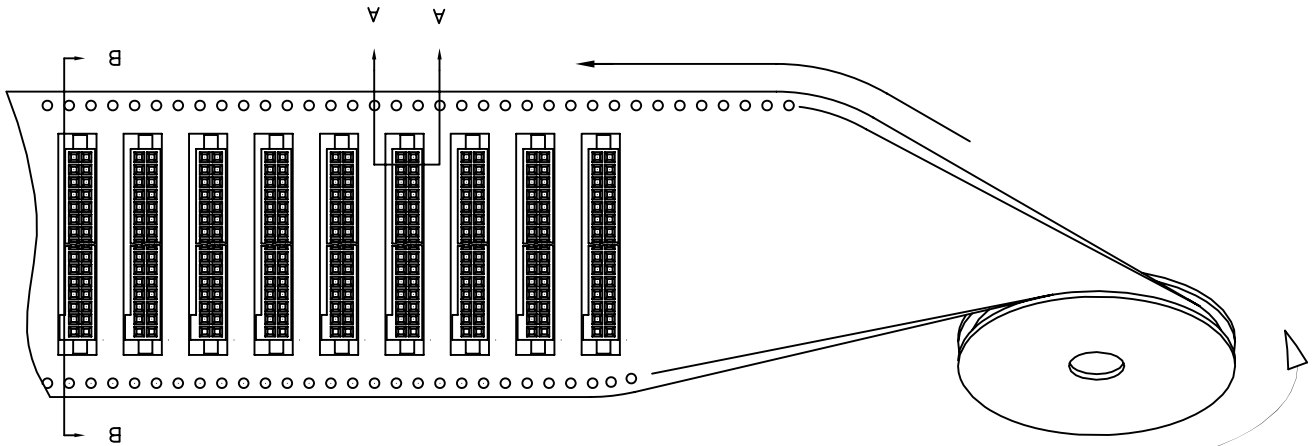


PRODUCT NUMBER
SEE TABLE



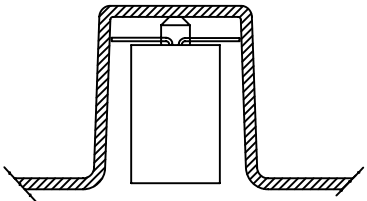
mat'l. code		surface		ISO 1302		tolerance		ISO 406		projection		product family		RIB CAGE	
itr		ecn no		dr		date		tolerances unless otherwise specified		title		product family		RIB CAGE	
AH		BX-N-19819		JH		12/22/14		XX±.01/XX±.03		INCH/MM		.050cc VERT. SMT.		W/LOC. & POL. FEATURE	
vz		in		near		XX±.005/XX±0.13		XX±.0020/XX±0.051		scale 1:1		FCI		87024	
AD		M09-0058		CMR		4/06/09		dr		M. CLOUSER		6/26/91		sheet 1 of 3 size	
AE		M09-0071		MHT		4/30/09		en		B. BARUFFALO		6/26/91		type Product Customer Drawing	
AF		N10-0174		YOH		6/17/10		chr		B. BARUFFALO		6/26/91		A3	
AG		BX-N-010202		YO		2/8/12		app		B. BARUFFALO		6/26/91			
index		revision		AH		AH		AH		AH		AH			
sheet		1		2		3		4		5		6			

UNREELING
DIRECTION

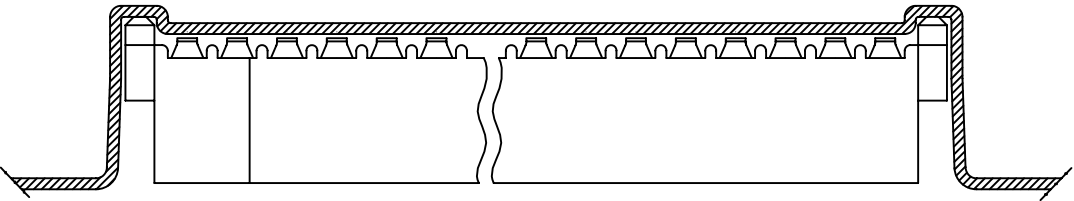


REFERENCE ONLY
TAPES WIDTH'S 32mm AND ABOVE HAS BOTH FEED TRACKS,
BELOW 32mm HAS TOP FEED TRACK ONLY.

SECTION A-A



SECTION B-B



mat'l. code		-		itr		ecn no		dr		date		tolerances unless otherwise specified	
surface		ISO 1302		projection		ISO 406		ISO 1101		title		product family	
RIB CAGE				W/LOC. & POL. FEATURE		.050cc VERT. SMT.		INCH/MM		scale 1:1		FCI	
angles		XXF.01/XXF.03		angles		XXF.005/XXF.0.13		invar		XXFX.0020/XXFX.051		dr	
M. CLOUSER		6/26/91		engr		B. BARUFFALO		6/26/91		chr		B. BARUFFALO	
6/26/91		6/26/91		6/26/91		6/26/91		6/26/91		6/26/91		6/26/91	
app		B. BARUFFALO		6/26/91		6/26/91		6/26/91		6/26/91		6/26/91	
sheet		revision		sheet		index		sheet		revision		index	

PRODUCT NO.	SIZE	DIM A	DIM B	DIM C	DIM D	DIM E	SPECIAL PACKAGING	TAPE WIDTH / PITCH	PIECES PER REEL
87024-605	2 X 5	.266/6.756	.200/5.08	.370/9.398	.3200/8.128	∅.0520/1.321	NOTE 6	24mm 12mm	750
-610	2 X 10	.516/13.106	.450/11.43	.620/15.748	.5700/14.478	∅.0520/1.321	NOTE 6	24mm 12mm	750
-610P	2 X 10	.516/13.106	.450/11.43	.620/15.748	.5700/14.478	∅.0520/1.321	NOTE 8	24mm 16mm	400
-615	2 X 15	.766/19.456	.700/17.78	.870/22.098	.8200/20.828	∅.0520/1.321	NOTE 6	44mm 12mm	500
-620	2 X 20	1.016/25.806	.950/24.13	1.120/28.448	1.0700/27.178	∅.0520/1.321	NOTE 6 & 7	44mm 12mm	500
-625	2 X 25	1.266/32.156	1.200/30.48	1.370/34.798	1.3200/33.528	∅.0520/1.321	NOTE 6	56mm 12mm	500
-630	2 X 30	1.516/38.506	1.450/36.83	1.620/41.148	1.5700/39.878	∅.0520/1.321	NOTE 6 & 7	56mm 12mm	500
-635	2 X 35	1.766/44.856	1.700/43.18	1.870/47.498	1.8200/46.228	∅.0520/1.321	NOTE 6	72mm 12mm	500
-640	2 X 40	2.016/51.206	1.950/49.53	2.120/53.848	2.0700/52.578	∅.0520/1.321	NOTE 6 & 7	72mm 12mm	500
-645	2 X 45	2.266/57.556	2.200/55.88	2.370/60.198	2.3200/58.928	∅.0520/1.321	NOTE 6	72mm 12mm	500
-650	2 X 50	2.516/63.906	2.450/62.23	2.620/66.548	2.5700/65.278	∅.0520/1.321	NOTE 6 & 7	88mm 12mm	500
-625S	2 X 25	1.266/32.156	1.200/30.48	1.370/34.798	1.3200/33.528	∅.0394/1.00	NOTE 6	56mm 12mm	500

NOTES:

① HOUSING MATERIAL: LCP GLASS FILLED FLAME RETARDANT PER UL 94V-0
COLOR: NATURAL

② TERMINAL MATERIAL: BeCu

③ TERMINAL PLATING:

30u"/.76µm MIN HARD GOLD OR GXT OVER IN ON CONTACT ZONES,
100u"/2.54µm MIN TIN OVER IN SOLDERING ZONES,
OTHERWISE GOLD FLASH OR UNPLATED.

4 APPLICATION INFORMATION:

A. RECOMMENDED MOUNTING PAD PATTERN IS
SHOWN IN FIGURE "A".

B. MATING PINS TO BE ∅.0176/0.447 TO ∅.0181/0.459 DIA.
C. MATING PIN TIPS TO BE IN TRUE POSITION TO MATING
GRID WITHIN ∅.06/0.15 DIA.

D. SUGGESTED MATING PIN LENGTH .130/3.30
E. LEAD TIPS TO BE ABOVE HEEL UP TO ∅.07/0.18 MAX.
COPLANARITY TO BE MEASURED AT LOWEST POINT (HEEL).

6. IF P/N THE PRODUCT MEETS EUROPEAN UNION DIRECTIVES AND OTHER
COUNTRY REGULATION AS DESCRIBED IN GS-22-008.

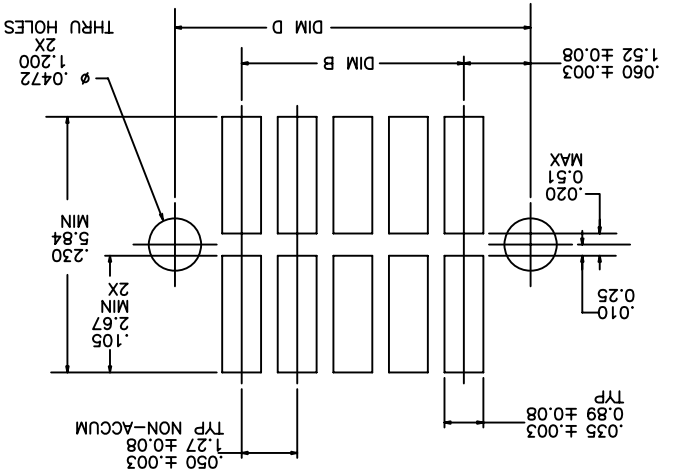
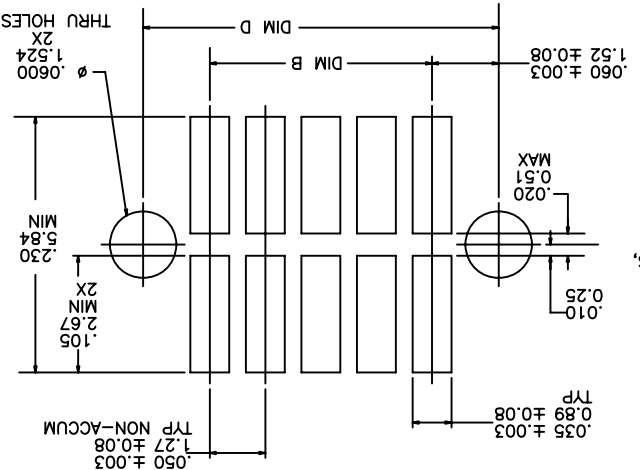
7. THE HOUSING WILL WITHSTAND EXPOSURE TO 260°C PEAK TEMPERATURE
FOR 20 SECONDS IN A CONVECTION, INFRARED OR VAPOR PHASE FLOW
OVEN. SEE APPLICATION NOTES/PROCEDURES IF THEY ARE AVAILABLE.

8. PRODUCT SPEC PER BUS-12-087.

9. PN DEFINE:

87024-605XXXLF

LEAD FREE
WITH "TR": TAPE AND REEL+CAP
WITHOUT "CT": TUPE+CAP
WITH "P": THE CARRIER'S PITCH IS 16MM
WITHOUT "P": THE CARRIER'S PITCH IS 12MM
WITH "S": THE POST'S DIAMETER IS 1.00MM, FOR FIGURE B
WITHOUT "S": THE POST'S DIAMETER IS 1.321MM, FOR FIGURE A



matl. code	-		ISO 1302	surface	tolerance	ISO 406	projection	product family	RIB CAGE
itr	ecn no	dr	date	tolerances unless otherwise specified	XX4.01/XX4.03	INCH/MM	.050cc VERT. SMT.	W/LOC. & POL. FEATURE	sheet 2 of 3 size
angles	linear		XX3F.005/XX4F.013	XX04F.0020/XX34F.051	scale 1:1	FCI	87024	A3	Product Customer Drawing
sheet	revision	sheet		index	sheet				

X-ON Electronics

Largest Supplier of Electrical and Electronic Components

Click to view similar products for [Board to Board & Mezzanine Connectors](#) category:

Click to view products by [Amphenol](#) manufacturer:

Other Similar products are found below :

[10135583-642402LF](#) [89885-310LF](#) [589158040000018](#) [6-1393048-0](#) [68683-613](#) [MDF7-12DP-2.54DSA](#) [MDF7-18P-2.54DSA\(01\)](#) [MDF7-20DP-2.54DSA](#) [MDF7-26D-2.54DSA\(55\)](#) [MDF7-3P-2.54DSA\(01\)](#) [MDF7B-3P-2.54DSA\(55\)](#) [MDF7C-11P-2.54DSA\(55\)](#) [MDF7C-18P-2.54DSA\(55\)](#) [MDF7C-5P-2.54DSA\(01\)](#) [MDF7P-5P-2.54DSA\(55\)](#) [75234-0516](#) [FCN-230C068-11](#) [FCN-268F012-G/BD](#) [FCN-268F036-G/BD](#) [FCN-268M012-G/0D](#) [FCN-268M024-G/1D](#) [FCN-360C008-C](#) [FCN-360C040-C](#) [FCN-723J004/1](#) [MIS-048-01-F-D-DP-K](#) [832-10-034-10-001000](#) [93696-325LF](#) [11828-1FA](#) [AXK630345P](#) [18097-0013](#) [ICA-328STT](#) [2007042-2](#) [304400-2](#) [FCN-214Q030-G/0](#) [FCN-215Q040-G/0](#) [FCN-230C068-ESA](#) [FCN-234P048-G/0](#) [FCN-235D050-G/C](#) [FCN-360A3](#) [FCN-360C040-B](#) [210-93-314-41-105000](#) [2-22603-0](#) [379-064-521-202](#) [MDF7-12P-2.54DSA\(01\)](#) [MDF7-16P-2.54DS\(56\)](#) [MDF7-40DP-2.54DSA\(55\)](#) [MDF7-8P-2.54DSA\(55\)](#) [MDF7B-16P-2.54DSA\(55\)](#) [AXG720047](#) [5031084030](#)