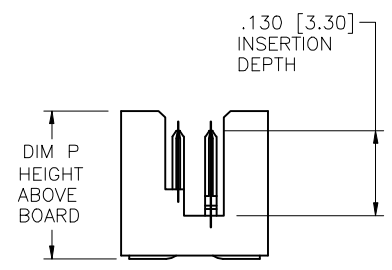
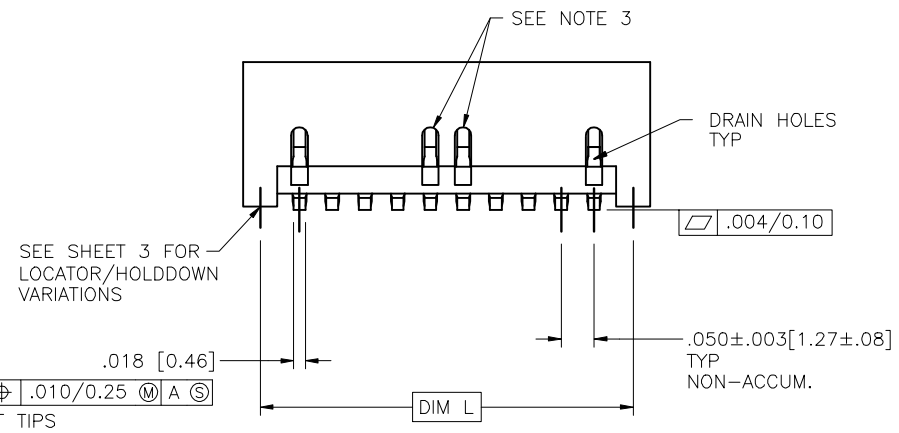
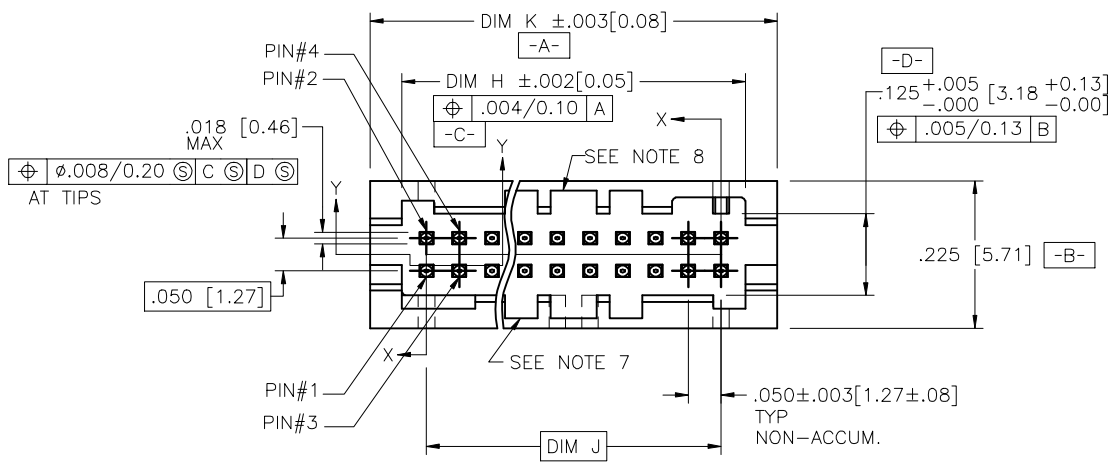
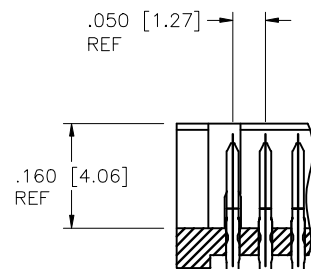
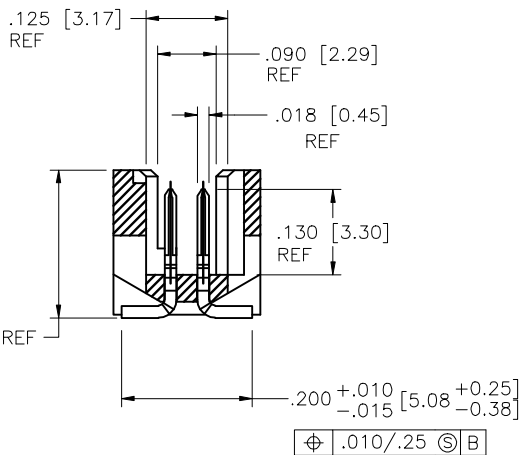


PRODUCT NUMBER
SEE TABLE



mat'l. code				surface	tolerance	projection	product family
SEE NOTES				ISO 1302	ISO 406	ISO 1101	RIB CAGE
ltr	ecn no	dr	date	tolerances unless otherwise specified		INCH/MM	title
U	v11295	CRG	4/285/01	angles	XX ±.01/XX±.03		RIB CAGE III SMT
V	v10329	CRG	6/06/01	linear	XXX±.06/XX±0.13	scale 1:1	VERT. HEADER ASS'Y
W	V04-0004	DAI	1/21/04	σ±z	XXXX±.0020/XXX±0.051		dwg no
X	M05-0084	MHT	5/05/05	dr	M. CORNMAN	6/07/95	sheet 1 of 6
Y	M06-0284	AEA	7/27/06	engr	D. WHITING	6/07/95	size
AA	M08-0245	MHT	8/27/08	chr	D. WHITING	6/07/95	A3
AB	M09-0058	MHT	4/02/09	appd	D. WHITING	6/07/95	type
sheet	revision	AB	AB	AB	AB	AB	Product Customer Drawing
index	sheet	1	2	3	4	5	

PRODUCT NUMBER SEE TABLE	SIZE	DIM H	DIM J	DIM K	DIM L
	2X5	.275/6.99	.200/5.08	.372/9.45	.320/8.13
	2X10	.525/13.34	.450/11.43	.622/15.80	.570/14.48
	2X15	.775/19.68	.700/17.78	.872/22.15	.820/20.83
	2X20	1.025/26.03	.950/24.13	1.122/28.50	1.070/27.18
	2X25	1.275/32.38	1.200/30.48	1.372/34.85	1.320/33.53
	2X30	1.525/38.74	1.450/36.83	1.622/41.20	1.570/39.88
	2X35	1.775/45.08	1.700/43.18	1.872/47.55	1.820/46.23
	2X40	2.025/51.43	1.950/49.53	2.122/53.90	2.070/52.58
	2X45	2.275/57.78	2.200/55.88	2.372/60.25	2.320/58.93
	2X50	2.525/64.14	2.450/62.23	2.622/66.60	2.570/65.28

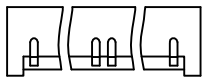


mat'l. code		surface		tolerance		projection		product family	
SEE NOTES		ISO 1302		ISO 406		ISO 1301		RIB CAGE	
ltr	ecp no	dr	date	tolerances unless otherwise specified		INCH/MM		title	
AB				angles	linear	XX ±.01/XX±0.3	RIB CAGE III SMT		
				0±Z		XXX±.006/XX±0.13	VERT. HEADER ASS'Y		
						XXXX.0020/XXX±0.051	scale	1:1	
		dr	M. CORNMAN	6/07/95	FCJ		dwg no	sheet 2 of 6 size	
		engr	D. WHITING	6/07/95			95781	A3	
		chr	D. WHITING	6/07/95			type Product Customer Drawing		
		appd	D. WHITING	6/07/95					
sheet	revision								
index	sheet								

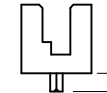
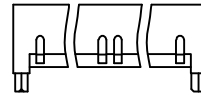
PRODUCT NUMBER
SEE TABLE

LOCATOR/HOLDDOWN VARIATIONS

STYLE 1



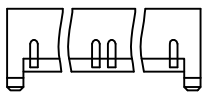
STYLE 5



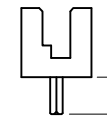
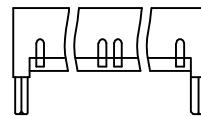
$.0470 \begin{matrix} +.0005 \\ -.0010 \end{matrix} [1.194 \begin{matrix} +.013 \\ -.025 \end{matrix}]$
 $.040 \begin{matrix} +.001 \\ -.002 \end{matrix} [1.02 \begin{matrix} +.03 \\ -.05 \end{matrix}]$
 $.040 \begin{matrix} +.0005 \\ -.0010 \end{matrix} [1.194 \begin{matrix} +.013 \\ -.025 \end{matrix}]$
 $.040 \begin{matrix} +.001 \\ -.002 \end{matrix} [1.02 \begin{matrix} +.03 \\ -.05 \end{matrix}]$

$.0580 [1.473]$

STYLE 2



STYLE 6
SEE NOTE 9

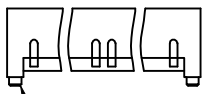


$\phi .0520 [1.321]$
 $\phi .040 [1.02]$
 $\phi .004/0.10 \text{ (M) A (S) B (S)}$ (ALL PEG CONFIGURATIONS)

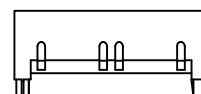
$.0520 \begin{matrix} +.0005 \\ -.0010 \end{matrix} [1.321 \begin{matrix} +.013 \\ -.025 \end{matrix}]$
 $.040 \begin{matrix} +.001 \\ -.002 \end{matrix} [1.02 \begin{matrix} +.03 \\ -.05 \end{matrix}]$
 $.0520 \begin{matrix} +.0005 \\ -.0010 \end{matrix} [1.321 \begin{matrix} +.013 \\ -.025 \end{matrix}]$
 $.040 \begin{matrix} +.001 \\ -.002 \end{matrix} [1.02 \begin{matrix} +.03 \\ -.05 \end{matrix}]$

$.120 [3.04]$

STYLE 3



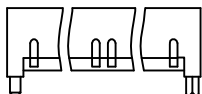
STYLE 7



$R.0050 [0.127]$
 $.028 [0.71]$
 $.024 [0.61]$
 $\phi .0394 [1.000]$

$.0665 \pm .001 [1.65 \pm .025]$
 $\phi .0400 [1.02]$
 $.052 \pm .001 [1.32 \pm .025]$
 $R.002 [0.05] \text{ MAX}$

STYLE 4



$.008 [0.20] \times 45^\circ$
 $\phi .034 \pm .001 [0.86 \pm .03]$
 $.0520 \begin{matrix} +.0005 \\ -.0010 \end{matrix} [1.321 \begin{matrix} +.013 \\ -.025 \end{matrix}]$
 $.030 [0.076]$
 $.040 \begin{matrix} +.001 \\ -.002 \end{matrix} [1.02 \begin{matrix} +.03 \\ -.05 \end{matrix}]$
 $.008 \pm .003 [0.20 \pm .08]$

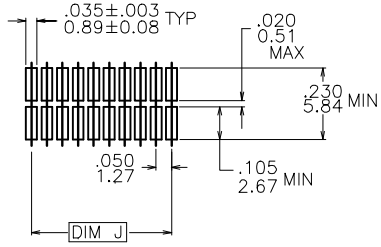
mat'l. code		surface	tolerance	projection	product family
SEE NOTES		ISO 1302	ISO 406	ISO 1101	RIB CAGE
ltr	ec'n no	dr	date	title	
AB				RIB CAGE III SMT	
tolerances unless otherwise specified				INCH/MM	VERT. HEADER ASS'Y
angles		linear	linear	scale	1:1
dr		M. CORNMAN	6/07/95	dwg no	
engr		D. WHITING	6/07/95	sheet 3 of 6	
chr		D. WHITING	6/07/95	size	
appd		D. WHITING	6/07/95	A3	
sheet		revision		type	
index		sheet		Product Customer Drawing	

Form A3

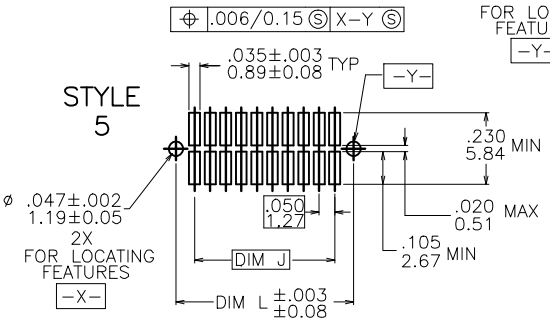
PRODUCT NUMBER
SEE TABLE

RECOMMENDED PCB MOUNTING PAD PATTERN

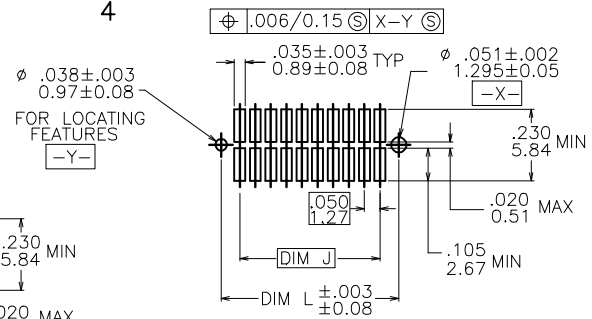
STYLE 1



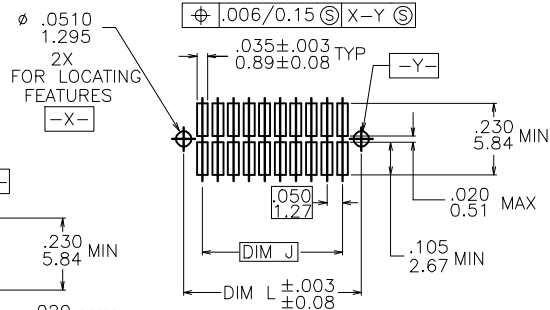
STYLE 5



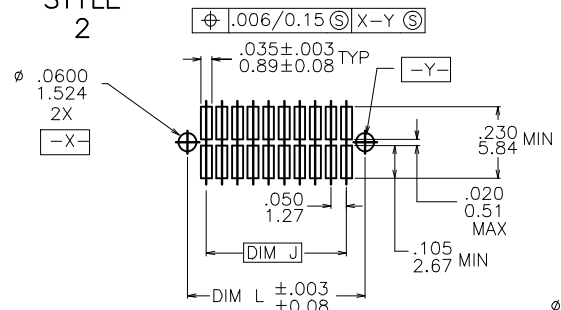
STYLE 4



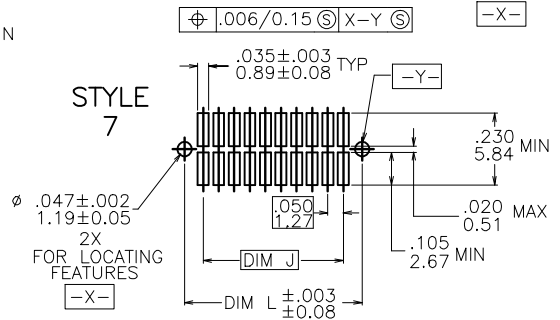
STYLE 6



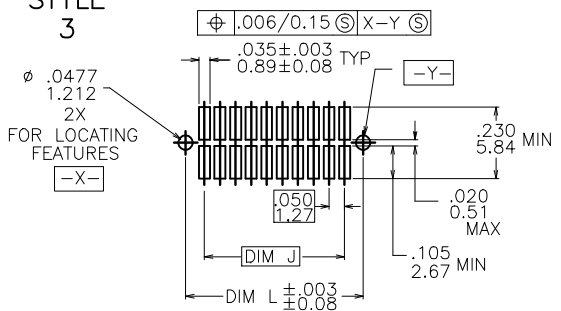
STYLE 2



STYLE 7



STYLE 3



mat'l. code	SEE NOTES	surface	ISO 1902	tolerance	ISO 406	projection	product family
ltr	ec'n no	dr	date	tolerances unless otherwise specified	linear	INCH/MM	RIB CAGE
AB				.XX ±.01/.X±0.3			RIB CAGE III SMT
				.XXX±.006/.XX±0.13			VERT. HEADER ASS'Y
				.XXXX±.0020/.XXX±0.051		scale 1:1	sheet 4 of 6 size
dr	M. CORNMAN	6/07/95					95781
engr	D. WHITING	6/07/95					A3
chr	D. WHITING	6/07/95					type Product Customer Drawing
appd	D. WHITING	6/07/95					
sheet	revision						
index	sheet						



Copyright FCI

PRODUCT NUMBER NOTE 1,4A & 4B	DIM P HEIGHT ABOVE BOARD (REF.)	HOLDDOWN STYLE
72428-1XX	.244/6.20	1
73546-1XX	.364/9.25	1
73547-1XX	.364/9.25	2
73548-1XX	.364/9.25	4
84700-1XX	.226/5.74	7
84701-1XX	.298/7.57	7
84734-1XX	.364/9.25	7
87401-1XX	.226/5.74	6
87409-1XX	.226/5.74	2
87849-1XX	.226/5.74	1
88566-1XX	.260/6.60	2
90098-1XX	.298/7.57	2
90863-1XX	.226/5.74	1
91036-1XX	.364/9.25	5
91423-1XX	.226/5.74	2
91855-1XX	.226/5.74	5
92099-1XX	.226/5.74	4
92412-1XX	.298/7.57	4
93206-1XX	.226/5.74	3
93221-1XX	.298/7.57	1
93289-1XX	.298/7.57	5

SEE NOTE 10

*

TABLE A

* CUSTOMER SPECIAL

NOTES:

- ① XXXXX-XXXLF
LEAD FREE OPTION (NOTE 11& 13)
NUMBER OF POSITIONS (NOTE 2)
- ② NUMBER OF POSITIONS = 05 THRU 50 IN 5 POS INCREMENTS.
(EXAMPLE : 105=10 POS., 110=20 POS. ETC.)
- ③ REQUIRED ON -X40,-X45 & -X50 POSITION PARTS ONLY.
4. PACKAGING :
A. ANTISTATIC TUBES. SEE TABLE A
B. ADD "CT" TO END OF DASH NUMBER FOR CONNECTOR
WITH VACUUM CAP IN ANTISTATIC TUBES.
EX. : XXXXX-1XXCT
C. PRESSURE SEALED TAPE AND REEL. SEE TABLE C
FOR AVAILABLE PART NUMBERS.
- ⑤ HOUSING MATERIAL :
GLASS FILLED THERMOPLASTIC FLAME RETARDANT PER UL 94V-0.
COLOR : NATURAL
- ⑥ TERMINAL PLATING :
30u"/.76u HARD Au OVER 50u"/1.27u Ni ON CONTACT ZONES.
100u"/2.54u TIN LEAD OVER 50u"/1.27u Ni IN SOLDERING ZONES.
LEAD FREE OPTION:
30u"/.76u HARD Au OVER 50u"/1.27u Ni ON CONTACT ZONES.
100u"/2.54u PURE TIN OVER 50u"/1.27u Ni IN SOLDERING ZONES.
- ⑦ MOLDING FLOW RESTRICTOR QUANTITY AND LOCATION IS
MANUFACTURING OPTION.
- ⑧ VACUUM CAP SLOT REQUIRED ON ALL SIZES, SLOT MAY
BE LOCATED ON OPPOSITE SIDE FOR 2 X 5.
- ⑨ STYLE 6 IS NOT AVAILABLE IN TAPE AND REEL.
- ⑩ 90863-1XX IS PACKAGED ONLY IN TAPE AND REEL.
- ⑪ ADD LF SUFFIX AT THE END OF PART NUMBER FOR LEAD FREE OPTION.
12. THE HOUSING WILL WITHSTAND EXPOSURE TO 260°C PEAK TEMPERATURE
FOR 20 SECONDS IN A CONVECTION, INFRA-RED OR VAPOR PHASE REFLOW
OVEN. SEE APPLICATION NOTE/PROCEDURES IF THEY ARE AVAILABLE.
- ⑬ THIS PRODUCT MEETS EUROPEAN UNION DIRECTIVES AND OTHER
COUNTRY REGULATION AS DESCRIBED IN GS-22-008.

mat'l. code		surface	tolerance	projection	product family
SEE NOTES		ISO 1302	ISO 1101		RIB_CAGE
ltr	ecn no	dr	date	title	
AB				RIB CAGE III SMT VERT. HEADER ASS'Y	
angles		linear	linear	INCH/MM	scale 1:1
0±z					
dr	M. CORNMAN	6/07/95		dwg no	sheet 5 of 6 size
engr	D. WHITING	6/07/95		95781	A3
chr	D. WHITING	6/07/95		type Product Customer Drawing	
appd	D. WHITING	6/07/95			
sheet	revision				
index	sheet				

PRODUCT NUMBER NOTE 11,4C	QTY. REEL	TAPE WIDTH PITCH MM	CONNECTOR ORIENTATION IN TAPE POCKET
72428-120TR	500	44/12	VIEW 1
73547-110TR	↑	24/12	↑
84700-105TR		24/12	
84700-135TR		56/12	
87409-115TR		44/12	
87409-120TR		44/12	
87409-125TR		56/12	
87409-130TR		56/12	
87409-140TR		72/12	
87849-110TR		24/12	
87849-115TR		44/12	
87849-120TR		44/12	
87849-125TR		56/12	
87849-130TR	500	56/12	
88566-110TR	750	24/12	
88566-115TR	500	44/12	
88566-130TR	500	56/12	
90863-110	↑	24/12	↓
90863-115		44/12	VIEW 1
90863-115REV		44/12	VIEW 2 *
90863-120		44/12	VIEW 1
90863-125		56/12	↑
90863-130		56/12	↑
91036-110P		24/16	
93206-115TR		44/12	
93221-105TR		24/12	
93221-110TR		32/12	
93221-125TR	500	56/12	VIEW 1

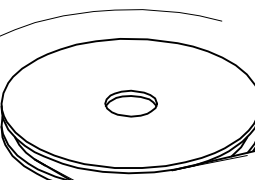
TABLE C

* CUSTOMER SPECIAL
NO VACUUM CAP

REFERENCE ONLY :

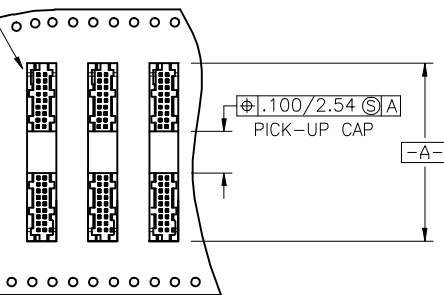
TAPE WIDTH 32mm AND ABOVE HAS BOTH FEED TRACKS,
BELOW 32mm HAS TOP FEED TRACK ONLY.

UNREELING
DIRECTION

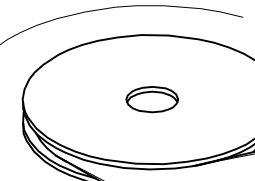


HEADER
VIEW 1
N.T.S.

POLARIZED
KEYWAY



UNREELING
DIRECTION



HEADER
VIEW 2
N.T.S.

POLARIZED
KEYWAY

mat'l. code		surface	tolerance	projection	product family
SEE NOTES		ISO 1902	ISO 406		RIB CAGE
ISO 1101		✓	ISO 1101		
ltr	ecn no	dr	date	title	
AB				RIB CAGE III SMT VERT. HEADER ASS'Y	
tolerances unless otherwise specified		angles	linear	INCH/MM	scale 1:1
		$\sigma \pm z$			
		dr	M. CORNMAN	6/07/95	dwg no
		engr	D. WHITING	6/07/95	sheet 6 of 6
		chr	D. WHITING	6/07/95	size
		appd	D. WHITING	6/07/95	A3
sheet		revision		type	
index		sheet		Product Customer Drawing	

X-ON Electronics

Largest Supplier of Electrical and Electronic Components

Click to view similar products for [Headers & Wire Housings](#) category:

Click to view products by [Amphenol](#) manufacturer:

Other Similar products are found below :

[892-18-020-10-001101](#) [58102-G61-06LF](#) [582553-1](#) [0009485154](#) [009176003701906](#) [0050291907](#) [LY20-4P-DT1-P1E-BR](#) [02.125.8002.8](#)
[609-3404](#) [61062-3](#) [622-0430](#) [622-3653LF](#) [63453-116](#) [636-1030](#) [636-1427](#) [636-3427](#) [636-4007](#) [641938-9](#) [641991-4](#) [644827-2](#) [65817-010LF](#)
[65817-015LF](#) [65863-015LF](#) [66207-023LF](#) [67095-007LF](#) [67601157](#) [68648-049](#) [70.362.1628.0](#) [70-4210](#) [70-4226B](#) [70-4853B](#) [707-5020](#) [707-](#)
[5028](#) [71.350.2428.0](#) [71918-208LF](#) [71961-016LF](#) [733-134](#) [733-162](#) [754199-000](#) [760-3052](#) [787-8014-00](#) [79531-3000](#) [FCN-360C032-B](#) [FCN-](#)
[367T-T012/H](#) [FCN-723D010/2](#) [80.063.4001.1](#) [800-90-001-10-001000](#) [800-90-010-10-002000](#) [801-43-002-10-013000](#) [801-43-006-10-002000](#)