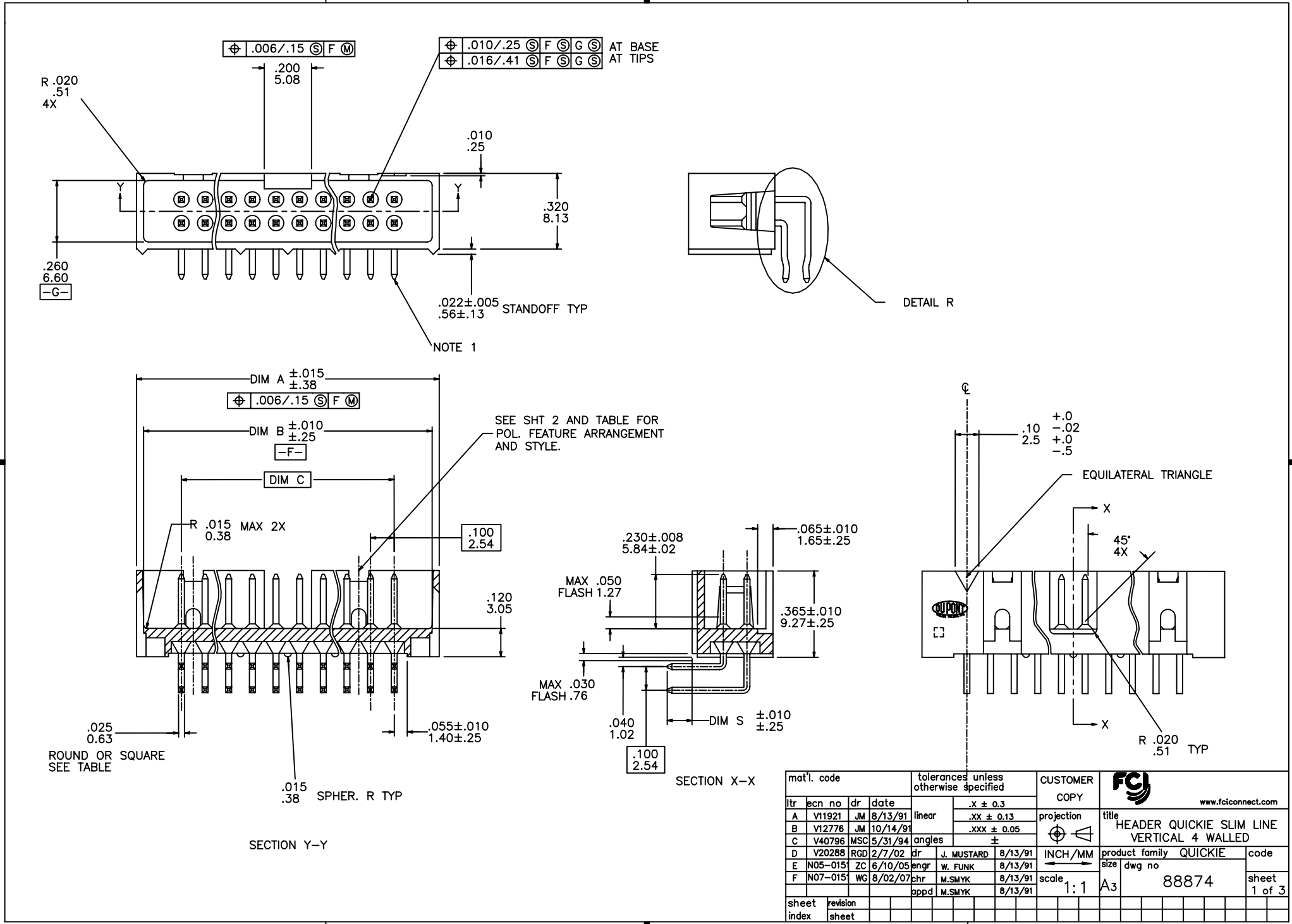


Tous droits strictement reserves. Reproduction ou communication a des tiers interdite sous quelque forme que ce soit sans autorisation ecrite du proprietaire. Propriete de c FCI. Droits de reproduction FCI.



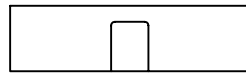
All rights strictly reserved. Reproduction or issue to third parties in any form whatever is not permitted without written authority from the proprietor. Property of FCI. Copyright FCI.



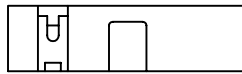
Tous droits strictement reserves. Reproduction ou communication a des tiers interdite sous quelque forme que ce soit sans autorisation écrite du propriétaire. Propriete de c FCI. Droits de reproduction FCI.



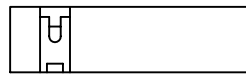
All rights strictly reserved. Reproduction or issue to third parties in any form whatever is not permitted without written authority from the proprietor. Property of FCI. Copyright FCI.



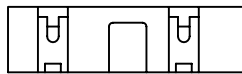
2 X 5  
STYLE A



2 X 7  
STYLE C



2 X 5  
STYLE B



2 X 8 THUR 2 X 30  
STYLE D

KEY FOR PLATING AND TAIL LENGTH AND TYPE

X	TERMINAL PLATING ( NOTE 9 )	DIM S $\pm 0.1$ $\pm 3$	TERMINAL TYPE
-0XX(LF)	30u"/.76u Au OVER 50u"/1.27u Ni	.105/2.67	RD
-1XX(LF)	30u"/.76u GXT/GOLD FLASH	.105/2.67	RD
-2XX(LF)	30u"/.76u Au OVER 50u"/1.27u Ni	.150/3.81	RD
-3XX(LF)	30u"/.76u GXT/GOLD FLASH	.150/3.81	RD
-4XX(LF)	30u"/.76u Au OVER 50u"/1.27u Ni	.105/2.67	SQ
-5XX(LF)	15u"/.38u GXT/GOLD FLASH	.105/2.67	SQ
-6XX(LF)	30u"/.76u Au OVER 50u"/1.27u Ni	.150/3.81	SQ
-7XX(LF)	30u"/.76u GXT/GOLD FLASH	.150/3.81	SQ
-8XX(LF)	15u"/.38u Au OVER 50u"/1.27u Ni	.150/3.81	SQ
-9XX(LF)	30u"/.76u GXT/GOLD FLASH	.105/2.67	SQ

NOTES:

- ① SAME PIN POSITION TOLERANCE APPLIES TO BOTH ENDS OF EACH TERMINAL.
- ② MOLDING MAT'L: 30% GLASS-FILLED POLYESTER, FLAME RETARDANT PER UL-94V-0, COLOR: BLUE.
3. 1° MAX DRAFT PERMISSIBLE ON ALL SURFACES.
4. 4 POUNDS/1.8 KILOGRAMS MIN. TERM. PULL-OUT FORCE.
- ⑤ TERMINAL MAT'L: PHOSPHOR BRONZE.
- ⑥ A. PART NUMBERS HAVING AN "R" FOLLOWING THE 8 DIGIT PART NUMBER (EXAMPLE 89239-010R) HAVE TWO PAIRS OF PINS AT EACH END TO PROVIDE RETENTION. LOCATION IS MANUFACTURER'S OPTION. SEE DETAIL "R" SHEET 1.  
 B. CONNECTORS WITH RETENTION AND ROUND PINS HAVE 15LB./6.8KG. MAX INSERTION AND .25LB./.11KG. MIN RETENTION FORCE WHEN USED IN A .035/0.89±.003/0.08 DIA HOLE AND .062/1.58 THICK P.C.BOARD.  
 C. CONNECTORS WITH RETENTION AND SQUARE PINS HAVE A 15LB./6.8KG. MAX INSERTION AND A .5LB./.23KG. MIN RETENTION WHEN USED IN A .040/1.02±.003/0.08 DIA HOLE AND A .062/1.58 THICK P.C.BOARD.
7. THE HOUSING OF XXXXX-XYLFF WILL WITHSTAND EXPOSURE TO 260°C PEAK TEMPERATURE FOR 10 SECONDS IN A WAVE SOLDER PROCESS.
8. 88874-\*\*\*LF IS JUST A LEAD FREE PRODUCT.
9. PLATING OPTION: MAYBE EITHER GOLD OR GXT PLATING AT MANUFACTURER'S OPTION.

mat'l. code		tolerances unless otherwise specified		CUSTOMER COPY		FCI www.fciconnect.com		
ltr	ecr no	dr	date	linear	projection	title		
F						.X ± 0.3	HEADER QUICKIE SLIM LINE	
						.XX ± 0.13	VERTICAL 4 WALLED	
				angles	±	product family QUICKIE		
		dr	J. MUSTARD 8/13/91	INCH/MM		code		
		enfr	W. FUNK 8/13/91	← →		size	dwg no	
		chr	M.SMYK 8/13/91	scale		88874		
		appd	M.SMYK 8/13/91	1:1		sheet 2 of 3		
sheet index	revision sheet							

Tous droits strictement reserves. Reproduction ou communication a des tiers interdite sous quelque forme que ce soit sans autorisation ecrite du proprietaire. Propriete de c FCI. Droits de reproduction FCI.



All rights strictly reserved. Reproduction or issue to third parties in any form whatever is not permitted without written authority from the proprietor. Property of FCI. Copyright FCI.

NOTE 6	POS	DIM A	DIM B	DIM C	STYLE
88874-X02 (LF)	2X5	.78/19.8	.72/18.3	.400/10.16	B
↑ -X08(LF)	2X4	.68/17.3	.62/15.8	.300/7.62	A
-X10(LF)	2X5	.78/19.8	.72/18.3	.400/10.16	A
-X14(LF)	2X7	.98/24.9	.92/23.4	.600/15.24	C
-X16(LF)	2X8	1.08/27.9	1.02/25.9	.700/17.78	D
-X20(LF)	2X10	1.28/32.5	1.22/31.0	.900/22.86	
-X24(LF)	2X12	1.48/37.6	1.42/36.1	1.100/27.94	
-X26(LF)	2X13	1.58/40.1	1.52/38.6	1.200/30.48	
-X30(LF)	2X15	1.78/45.2	1.72/43.7	1.400/35.56	
-X34(LF)	2X17	1.98/50.3	1.92/48.8	1.600/40.64	
-X40(LF)	2X20	2.28/57.9	2.22/56.4	1.900/48.26	
-X44(LF)	2X22	2.48/63.0	2.42/61.5	2.100/53.34	
↓ -X50(LF)	2X25	2.78/70.6	2.72/69.1	2.400/60.96	
88874-X60 (LF)	2X30	3.28/83.3	3.22/81.8	2.900/73.66	D

A

A

B

B

mat'l. code		tolerances unless otherwise specified		CUSTOMER COPY		 www.fciconnect.com			
ltr	ecn no	dr	date	linear	projection	 title HEADER QUICKIE SLIM LINE VERTICAL 4 WALLED			
F								.X ± 0.3	 product family QUICKIE code
								.XX ± 0.13	
				angles	±	scale	sheet		
				dr	J. MUSTARD			8/13/91	3 of 3
				enfr	W. FUNK	8/13/91			
				chr	M.SMYK	8/13/91			
				appd	M.SMYK	8/13/91			
sheet index	revision sheet								

## X-ON Electronics

Largest Supplier of Electrical and Electronic Components

*Click to view similar products for [Headers & Wire Housings](#) category:*

*Click to view products by [Amphenol](#) manufacturer:*

Other Similar products are found below :

[95000-104TRLF](#) [10135584-644402LF](#) [DF62W-EP2022PCA](#) [95000-106TRLF](#) [DF62W-2022SCA](#) [DF62W-EP2022PC](#) [2203348](#) [DF62W-2022SC](#) [1084018](#) [1029039](#) [1084017](#) [802-10-012-10-002000](#) [1112640](#) [1112639](#) [891-007-9SS-BST1T](#) [000-34000](#) [0008550134](#) [0009482033](#) [0009507031](#) [57102-F02-18ULF](#) [57102-S06-03LF](#) [57202-S52-04LF](#) [PCN6-15S-2.5E](#) [0039019024](#) [58102-G61-06LF](#) [582553-1](#) [0009485154](#) [0009508121](#) [009176003701906](#) [0022285053](#) [0050291907](#) [018731A](#) [LY20-4P-DT1-P1E-BR](#) [02.125.8002.8](#) [60101931](#) [60598-1 \(Cut Strip\)](#) [M1625-3R/100](#) [61062-3](#) [61082-181009](#) [CSU011177004](#) [636-1427](#) [638009-1](#) [641938-9](#) [641991-4](#) [644168-1](#) [644827-2](#) [647662-1](#) [65039-019ELF](#) [65692-001LF](#) [65781-018](#)