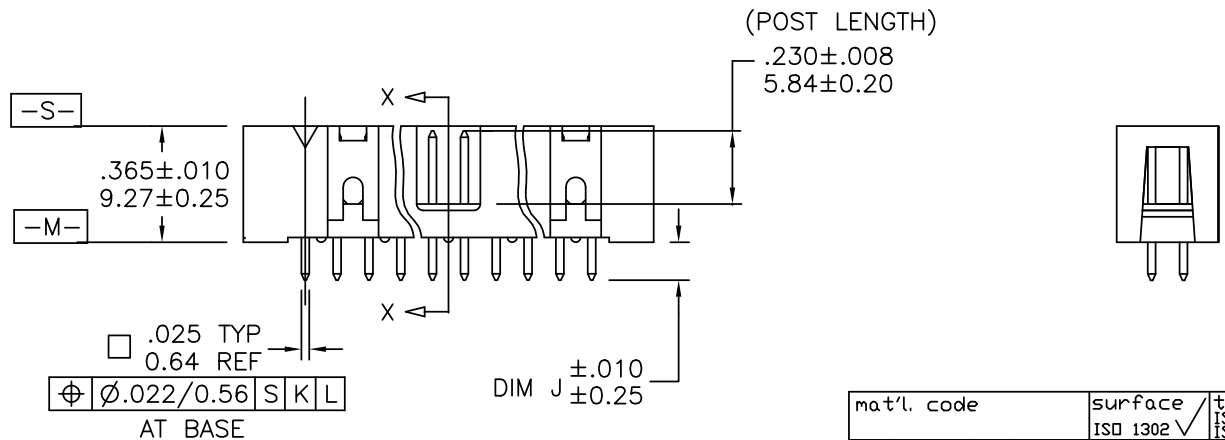
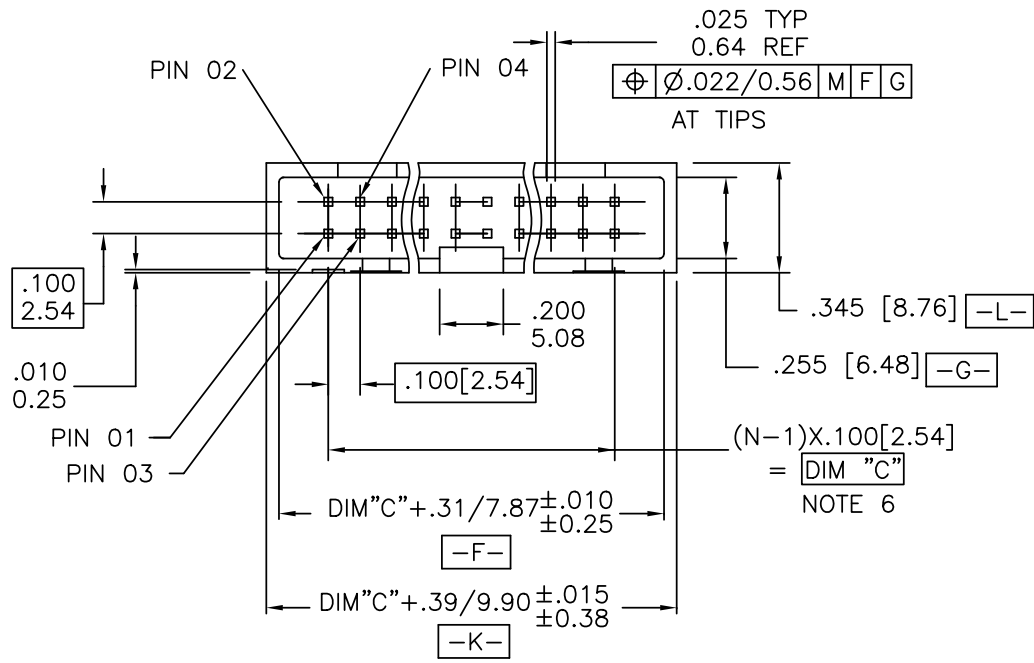


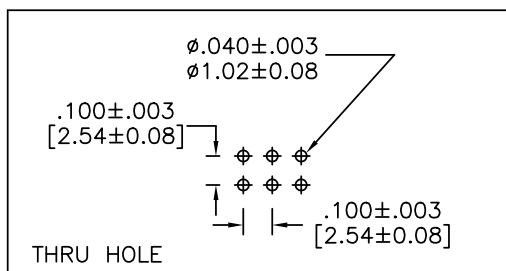
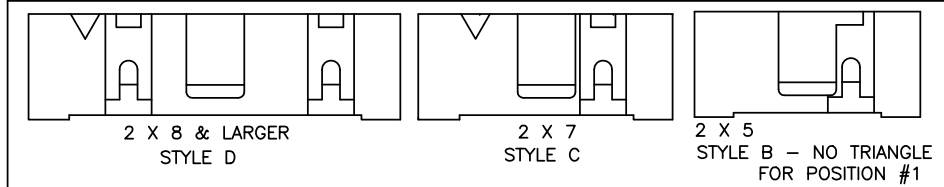
PRODUCT NUMBER
SEE TABLE



mat'l. code		surface ISO 1302 ✓		tolerance ISO 406 ISO 1101		projection ①		product family QUICKIE	
ltr ecn nldr date		tolerances unless otherwise specified		angles		INCH/MM		title	
H	N05-0123	ZC	5/9/05	linear		X.XX ± .01 / X.XX ± .03		HEADER, QUICKIE, SLIM LINE	
J	N07-0151	WG	8/02/07	± 2'		X.XXX ± .005 / X.XXX ± .013		VERTICAL, 4-WALL	
K	EX-N-012098	J.Z	2012-07-04	X.XXX ± .0020 / X.XXX ± 0.051		scale 2:1		dwg no 88880 sheet of 10 size A3	
dr		M. CLOUSER		7/11/90				type Product Customer Drawing	
engr		M. SMYK		7/11/90					
chr		M. SMYK		8/21/91					
appd		M. SMYK		8/21/91					
sheet index	revision	K	K	K	K	K	K	K	K
sheet	1	2	3	4	5	6	7	8	9

PRODUCT NUMBER
SEE TABLE

HEADER STYLE



RECOMMENDED BOARD LAYOUT

NOTES:

1. SAME POSITION TOLERANCE APPLIES TO BOTH ENDS OF PINS.
2. MOLDING MATERIAL: GLASS-FILLED POLYESTER, FLAME RETARDANT PER UL 94 V-0, COLOR: BLACK.
 3. 1° MAX. DRAFT PERMISSIBLE ON ALL SURFACES.
 4. 3 LBS./1.36 KG MIN. TERMINAL PULL-OUT FORCE.
5. TERMINAL MATERIAL: PHOSPHORUS BRONZE.
6. TO DETERMINE DIMENSIONS:
N = NUMBER OF POSITIONS PER ROW
7. SEE 68751 FOR LATCHES.
8. PART NUMBERS WITH "R" FOLLOWING THE PART NUMBER (EXAMPLE 66506-326 R) HAS RETENTION. (ONLY PARTS WITH .105, .120, AND .150 ROUND OR SQUARE TAILS CAN HAVE RETENTION.) LOCATION IS MANUFACTURERS OPTION.
FOR CONNECTORS:
RETENTIVE LEG APPLICABLE TO TAIL LENGTHS .125/3.18 MAX. 5LB/2.3KG MAX INSERTION FORCE AND .25LB/1KG MIN RETENTION FORCE PER RETENTIVE PIN USING .062/1.57 THICK CIRCUIT BOARD AND RECOMMENDED HOLE PATTERN. RETENTIVE LOCATION AT THE DISCRETION OF THE MANUFACTURER. RETENTION PIN MAY BE SHIFTED TO NEXT POSITION.
9. PART NUMBERS WITH "T" FOLLOWING PART NUMBER (EXAMPLE 66506-068 T IS PACKED IN TUBES.) (CALL PRODUCT MANAGER FOR AVAILABILITY.)
10. MAY BE ORDERED WITH "G" PACK PACKAGING BY ADDING "G" TO DASH NUMBER.
11. UNDER PLATING: 50 μ "/1.27 μ m Ni.
12. ADD "LF" SUFFIX AT THE END OF PART NUMBER FOR LEAD FREE OPTION & PART NUMBERS WITH "LF" SUFFIX ADDED IN THE TABLE ARE LEAD FREE.
13. IF "LF" P/N THE PRODUCT MEETS EUROPEAN UNION DIRECTIVES AND OTHER COUNTRY REGULATION AS DESCRIBED IN GS-22-008.
14. THE HOUSING WILL WITHSTAND EXPOSURE TO 260°C PEAK TEMPERATURE FOR 15 SECONDS IN A WAVE SOLDER APPLICATION WITH A 1.57mm MINIMUM THICK CIRCUIT BOARD. SEE APPLICATION NOTES/PROCEDURES IF THEY ARE AVAILABLE.
15. "THIS PRODUCT HAS 100% TIN PLATING IN THE INTERFACE AND HAS NOT BEEN TESTED FOR WHISKER GROWTH IN ALL INTERCONNECT ENVIRONMENTS."
16. PLATING OPTIONS:
PERFORMANCE PLATING WILL BE EITHER GOLD OR GXT ON CONTACT OR TAIL, OPTIONALLY TIN ON TAIL.

mat'l. code		surface	tolerance	projection	product family
		ISD 1302 ✓	ISD 406 ISD 1101		QUICKIE
ltr	ecn	no	date	title	
K				HEADER, QUICKIE, SLIM LINE VERTICAL, 4-WALL	
		angles	linear	INCH/MM	
		±2'	XXX±.01/XXX±.03 XXX±.005/XXX±.013 XXX±.0020/XXX±.051	scale 1:1	
		dr	M. CLOUSER	7/11/90	
		engr	M. SMYK	7/11/90	
		chr	M. SMYK	8/21/91	
		appd	M. SMYK	8/21/91	
sheet	revision	dwg no			
index	sheet	88880			
		type Product Customer Drawing			

PRODUCT NO.	SIZE	STYLE	DIM C	DIM J	PIN PLATING	PLASTIC MATERIAL
NOTE 8 & 9						
88880-001	2 X 5	B	.400/10.16	.105/2.67	30u"/0.76u MIN (NOTE 16) OVER 50u"/1.27u Ni	NOTE 2
-002				.150/3.81	30u"/0.76u MIN (NOTE 16) OVER 50u"/1.27u Ni	
-003				.675/17.15	30u"/0.76u MIN (NOTE 16) OVER 50u"/1.27u Ni	
-004				.105/2.67	150u"/3.81u TIN	
-005				.150/3.81	150u"/3.81u TIN	
-006	2 X 5	B	.400/10.16	.675/17.15	150u"/3.81u TIN	
-007	2 X 10	D	.900/22.86	.105/2.67	30u"/0.76u MIN (NOTE 16) OVER 50u"/1.27u Ni	
-008				.150/3.81	30u"/0.76u MIN (NOTE 16) OVER 50u"/1.27u Ni	
-009				.675/17.15	30u"/0.76u MIN (NOTE 16) OVER 50u"/1.27u Ni	
-010				.105/2.67	150u"/3.81u TIN	
-011				.150/3.81	150u"/3.81u TIN	
-012	2 X 10		.900/22.86	.675/17.15	150u"/3.81u TIN	
-013	2 X 13		1.200/30.48	.105/2.67	30u"/0.76u MIN (NOTE 16) OVER 50u"/1.27u Ni	
-014				.150/3.81	30u"/0.76u MIN (NOTE 16) OVER 50u"/1.27u Ni	
-015				.675/17.15	30u"/0.76u MIN (NOTE 16) OVER 50u"/1.27u Ni	
-016				.105/2.67	150u"/3.81u TIN	
-017				.150/3.81	150u"/3.81u TIN	
-018	2 X 13		1.200/30.48	.675/17.15	150u"/3.81u TIN	
-019	2 X 17		1.600/40.64	.105/2.67	30u"/0.76u MIN (NOTE 16) OVER 50u"/1.27u Ni	
-020				.150/3.81	30u"/0.76u MIN (NOTE 16) OVER 50u"/1.27u Ni	
-021				.675/17.15	30u"/0.76u MIN (NOTE 16) OVER 50u"/1.27u Ni	
-022				.105/2.67	150u"/3.81u TIN	
-023				.150/3.81	150u"/3.81u TIN	
-024	2 X 17		1.600/40.64	.675/17.15	150u"/3.81u TIN	
-025	2 X 20		1.900/48.26	.105/2.67	30u"/0.76u MIN (NOTE 16) OVER 50u"/1.27u Ni	
-026				.150/3.81	30u"/0.76u MIN (NOTE 16) OVER 50u"/1.27u Ni	
-027				.675/17.15	30u"/0.76u MIN (NOTE 16) OVER 50u"/1.27u Ni	
-028				.105/2.67	150u"/3.81u TIN	
-029				.150/3.81	150u"/3.81u TIN	
-030	2 X 20		1.900/48.26	.675/17.15	150u"/3.81u TIN	
-031	2 X 25		2.400/60.96	.105/2.67	30u"/0.76u MIN (NOTE 16) OVER 50u"/1.27u Ni	
-032				.150/3.81	30u"/0.76u MIN (NOTE 16) OVER 50u"/1.27u Ni	
-033				.675/17.15	30u"/0.76u MIN (NOTE 16) OVER 50u"/1.27u Ni	
-034				.105/2.67	150u"/3.81u TIN	
88880-035	2 X 25	D	2.400/60.96	.150/3.81	150u"/3.81u TIN	NOTE 2

FCI
FCIconnect.com

Copyright FCI

mat'l. code	surface ISO 1302 ✓	tolerance ISO 406 ISO 1101	projection 	product family QUICKIE
ltr ecn nopr date	tolerances unless otherwise specified			title HEADER, QUICKIE, SLIM LINE VERTICAL, 4-WALL
K	angles	linear XXX±.01/XXX.3 XXX±.005/XXX.13 XXX±.0020/XXX±0.051	INCH/MM	scale 1:1
	dr	M. CLOUSER 7/11/90		dwg no 88880 sheet 5 of 10 size A3
	enr	M. SMYK 7/11/90		
	chr	M. SMYK 8/21/91		
	app	M. SMYK 8/21/91		type Product Customer Drawing
sheet index	revision sheet			

PRODUCT NO.	SIZE	STYLE	DIM C	DIM J	PIN PLATING	PLASTIC MATERIAL
NOTE 8 & 9						
88880-036	2 X 25	D	2.400/60.96	.675/17.15	150u"/3.81u TIN	NOTE 2
-037	2 X 7	C	.600/15.24	.105/2.67	30u"/0.76u MIN (NOTE 16) OVER 50u"/1.27u Ni	
-038				.150/3.81	30u"/0.76u MIN (NOTE 16) OVER 50u"/1.27u Ni	
-039				.675/17.15	30u"/0.76u MIN (NOTE 16) OVER 50u"/1.27u Ni	
-040				.105/2.67	150u"/3.81u TIN	
-041				.150/3.81	150u"/3.81u TIN	
-042	2 X 7	C	.600/15.24	.675/17.15	150u"/3.81u TIN	
-043	2 X 8	D	.700/17.78	.105/2.67	30u"/0.76u MIN (NOTE 16) OVER 50u"/1.27u Ni	
-044				.150/3.81	30u"/0.76u MIN (NOTE 16) OVER 50u"/1.27u Ni	
-045				.675/17.15	30u"/0.76u MIN (NOTE 16) OVER 50u"/1.27u Ni	
-046				.105/2.67	150u"/3.81u TIN	
-047				.150/3.81	150u"/3.81u TIN	
-048	2 X 8	D	.700/17.78	.675/17.15	150u"/3.81u TIN	
-049	2 X 5	B	.400/10.16	.150/3.81	30u"/0.76u MIN (NOTE 16) OVER 50u"/1.27u Ni	
-050	2 X 10	D	.900/22.86			
-051	2 X 13		1.200/30.48			
-052	2 X 17		1.600/40.64			
-053	2 X 20		1.900/48.26			
-054	2 X 25	D	2.400/60.96			
-055	2 X 7	C	.600/15.24			
-056	2 X 8	D	.700/17.78	.150/3.81		
-057	2 X 30		2.900/73.66	.105/2.67		
-058				.150/3.81		
-059				.675/17.15	30u"/0.76u MIN (NOTE 16) OVER 50u"/1.27u Ni	
-060				.105/2.67	150u"/3.81u TIN	
-061				.150/3.81	150u"/3.81u TIN	
-062				.675/17.15	150u"/3.81u TIN	
-063				.105/2.67	30u"/0.76u MIN (NOTE 16) OVER 50u"/1.27u Ni	
-064				.150/3.81		
-065	2 X 30	D	2.900/73.66	.675/17.15		
-066	2 X 5	B	.400/10.16	.105/2.67		
-067	2 X 5	B	.400/10.16	.675/17.15		
-068	2 X 7	C	.600/15.24	.105/2.67		
-069	2 X 7	C	.600/15.24	.675/17.15		
88880-070	2 X 8	D	.700/17.78	.105/2.67	30u"/0.76u MIN (NOTE 16) OVER 50u"/1.27u Ni	NOTE 2

mat'l. code	surface ISO 1302 ✓	tolerance ISO 406 ISO 1101	projection 	product family QUICKIE
ltr ecn nopr date	tolerances unless otherwise specified			title HEADER, QUICKIE, SLIM LINE VERTICAL, 4-WALL
K	angles linear	XXX.X/XXX.X XXX.X/XXX.X XXX.X/XXX.X	INCH/MM	dwg no 88880
	±2'	XXX.X/XXX.X	scale 1:1	shee# of 10 size A3
	dr M. CLOUSER	7/11/90		type Product Customer Drawing
	engr M. SMYK	7/11/90		
	chr M. SMYK	8/21/91		
	appd M. SMYK	8/21/91		
sheet index	revision sheet			

PRODUCT NO.	SIZE	STYLE	DIM C	DIM J	PIN PLATING	PLASTIC MATERIAL
88880-071	2 X 8	D	.700/17.78	.675/17.15	30u"/0.76u MIN (NOTE 16) OVER 50u"/1.27u Ni	NOTE 2
-072	2 X 10		.900/22.86	.105/2.67		
-073	2 X 10		.900/22.86	.675/17.15		
-074	2 X 13		1.200/30.48	.105/2.67		
-075	2 X 13		1.200/30.48	.675/17.15		
-076	2 X 17		1.600/40.64	.105/2.67		
-077	2 X 17		1.600/40.64	.675/17.15		
-078	2 X 20		1.900/48.26	.105/2.67		
-079	2 X 20		1.900/48.26	.675/17.15		
-080	2 X 25		2.400/60.96	.105/2.67		
-081	2 X 25	D	2.400/60.96	.675/17.15	30u"/0.76u MIN (NOTE 16) OVER 50u"/1.27u Ni	
-082	2 X 5	B	.400/10.16	.105/2.67	15u"/0.38u MIN (NOTE 16) OVER 50u"/1.27u Ni	
-083	2 X 5	B	.400/10.16	.150/3.81		
-084	2 X 5	B	.400/10.16	.675/17.15		
-085	2 X 7	C	.600/15.24	.105/2.67		
-086	2 X 7	C	.600/15.24	.150/3.81		
-087	2 X 7	C	.600/15.24	.675/17.15		
-088	2 X 8	D	.700/17.78	.105/2.67		
-089	2 X 8		.700/17.78	.150/3.81		
-090	2 X 8		.700/17.78	.675/17.15		
-091	2 X 10		.900/22.86	.105/2.67		
-092	2 X 10		.900/22.86	.150/3.81		
-093	2 X 10		.900/22.86	.675/17.15		
-094	2 X 13		1.200/30.48	.105/2.67		
-095	2 X 13		1.200/30.48	.150/3.81		
-096	2 X 13		1.200/30.48	.675/17.15		
-097	2 X 17		1.600/40.64	.105/2.67		
-098	2 X 17		1.600/40.64	.150/3.81		
-099	2 X 17		1.600/40.64	.675/17.15		
-100	2 X 20		1.900/48.26	.105/2.67		
-101	2 X 20		1.900/48.26	.150/3.81		
-102	2 X 20		1.900/48.26	.675/17.15		
-103	2 X 25		2.400/60.96	.105/2.67		
-104	2 X 25		2.400/60.96	.150/3.81		
88880-105	2 X 25	D	2.400/60.96	.675/17.15	15u"/0.38u MIN (NOTE 16) OVER 50u"/1.27u Ni	NOTE 2

mat'l. code	surface ISO 1302 ✓	tolerance ISO 406 ISO 1101	projection 	product family QUICKIE
ltr ecn nopr date	tolerances unless otherwise specified			title HEADER, QUICKIE, SLIM LINE VERTICAL, 4-WALL
K	angles linear	XXX.X/XXX.X XXX.X/XXX.X XXX.X/XXX.X	INCH/MM	scale 1:1
	dr	M. CLOUSER 7/11/90		dwg no 88880
	enr	M. SMYK 7/11/90		sheet 5 of 10
	chr	M. SMYK 8/21/91		size A3
	appd	M. SMYK 8/21/91		type Product Customer Drawing
sheet index	revision sheet			

PRODUCT NO. NOTE 8 & 9	SIZE	STYLE	DIM C	DIM J	PIN PLATING	PLASTIC MATERIAL
88880-106	2 X 30	D	2.900/73.66	.105/2.67	15u"/0.38u MIN (NOTE 16) OVER 50u"/1.27u Ni	NOTE 2
-107	2 X 30	D	2.900/73.66	.150/3.81	15u"/0.38u MIN (NOTE 16) OVER 50u"/1.27u Ni	
-108	2 X 30	D	2.900/73.66	.675/17.15	15u"/0.38u MIN (NOTE 16) OVER 50u"/1.27u Ni	
-109	2 X 5	B	.400/10.16	.105/2.67	30u"/0.76u MIN (NOTE 16) OVER 50u"/1.27u Ni	
-110				.150/3.81	30u"/0.76u MIN (NOTE 16) OVER 50u"/1.27u Ni	
-111				.675/17.15	30u"/0.76u MIN (NOTE 16) OVER 50u"/1.27u Ni	
-112				.105/2.67	150u"/3.81u TIN	
-113				.150/3.81	150u"/3.81u TIN	
-114				.675/17.15	150u"/3.81u TIN	
-115				.105/2.67	15u"/0.38u MIN (NOTE 16) OVER 50u"/1.27u Ni	
-116				.150/3.81	15u"/0.38u MIN (NOTE 16) OVER 50u"/1.27u Ni	
-117				.675/17.15	15u"/0.38u MIN (NOTE 16) OVER 50u"/1.27u Ni	
-118				.105/2.67	30u"/0.76u MIN (NOTE 16) OVER 50u"/1.27u Ni	
-119				.150/3.81	30u"/0.76u MIN (NOTE 16) OVER 50u"/1.27u Ni	
88880-120	2 X 5	B	.400/10.16	.675/17.15	30u"/0.76u MIN (NOTE 16) OVER 50u"/1.27u Ni	NOTE 2
88880-121	DISCONTINUED					
THRU	DISCONTINUED					
88880-216	DISCONTINUED					
88880-217	2 X 12	D	1.100/27.94	.105/2.67	15u"/0.38u MIN (NOTE 16) OVER 50u"/1.27u Ni	NOTE 2
-218					30u"/0.76u MIN (NOTE 16) OVER 50u"/1.27u Ni	
-219					30u"/0.76u MIN (NOTE 16) OVER 50u"/1.27u Ni	
-220				.105/2.67	150u"/3.81u TIN	
-221				.150/3.81	15u"/0.38u MIN (NOTE 16) OVER 50u"/1.27u Ni	
-222					30u"/0.76u MIN (NOTE 16) OVER 50u"/1.27u Ni	
-223					30u"/0.76u MIN (NOTE 16) OVER 50u"/1.27u Ni	
-224				.150/3.81	150u"/3.81u TIN	
-225				.675/17.15	15u"/0.38u MIN (NOTE 16) OVER 50u"/1.27u Ni	
-226					30u"/0.76u MIN (NOTE 16) OVER 50u"/1.27u Ni	
-227					30u"/0.76u MIN (NOTE 16) OVER 50u"/1.27u Ni	
-228	2 X 12		1.100/27.94	.675/17.15	150u"/3.81u TIN	
-229	2 X 15		1.400/35.56	.105/2.67	15u"/0.38u MIN (NOTE 16) OVER 50u"/1.27u Ni	
-230					30u"/0.76u MIN (NOTE 16) OVER 50u"/1.27u Ni	
-231					30u"/0.76u MIN (NOTE 16) OVER 50u"/1.27u Ni	
-232				.105/2.67	150u"/3.81u TIN	
88880-233	2 X 15	D	1.400/35.56	.150/3.81	15u"/0.38u MIN (NOTE 16) OVER 50u"/1.27u Ni	NOTE 2

mat'l. code	surface ISO 1302 ✓	tolerance ISO 406 ISO 1101	projection 	product family QUICKIE
ltr ecn nopr date	tolerances unless otherwise specified			title HEADER, QUICKIE, SLIM LINE VERTICAL, 4-WALL
K	angles linear	XXX.X/XXX.X XXX.X/XXX.X XXX.X/XXX.X	INCH/MM	scale 1:1
	±2'	XXX.X/XXX.X XXX.X/XXX.X		dwg no 88880
	dr M. CLOUSER 7/11/90			shee 6 of 10 size A3
	engr M. SMYK 7/11/90			type Product Customer Drawing
	chr M. SMYK 8/21/91			
	appd M. SMYK 8/21/91			
sheet index	revision sheet			

PRODUCT NO.	SIZE	STYLE	DIM C	DIM J	PIN PLATING	PLASTIC MATERIAL
NOTE 8 & 9						
88880-234	2 X 15	D	1.400/35.56	.150/3.81	30u"/0.76u MIN (NOTE 16) OVER 50u"/1.27u Ni	NOTE 2
-235				.150/3.81	30u"/0.76u MIN (NOTE 16) OVER 50u"/1.27u Ni	
-236				.150/3.81	150u"/3.81u TIN	
-237				.675/17.15	15u"/0.38u MIN (NOTE 16) OVER 50u"/1.27u Ni	
-238					30u"/0.76u MIN (NOTE 16) OVER 50u"/1.27u Ni	
-239					30u"/0.76u MIN (NOTE 16) OVER 50u"/1.27u Ni	
-240	2 X 15		1.400/35.56	.675/17.15	150u"/3.81u TIN	
-241	2 X 22		2.100/53.34	.105/2.67	15u"/0.38u MIN (NOTE 16) OVER 50u"/1.27u Ni	
-242					30u"/0.76u MIN (NOTE 16) OVER 50u"/1.27u Ni	
-243					30u"/0.76u MIN (NOTE 16) OVER 50u"/1.27u Ni	
-244				.105/2.67	150u"/3.81u TIN	
-245				.150/3.81	15u"/0.38u MIN (NOTE 16) OVER 50u"/1.27u Ni	
-246					30u"/0.76u MIN (NOTE 16) OVER 50u"/1.27u Ni	
-247					30u"/0.76u MIN (NOTE 16) OVER 50u"/1.27u Ni	
-248				.150/3.81	150u"/3.81u TIN	
-249				.675/17.15	15u"/0.38u MIN (NOTE 16) OVER 50u"/1.27u Ni	
-250					30u"/0.76u MIN (NOTE 16) OVER 50u"/1.27u Ni	
-251					30u"/0.76u MIN (NOTE 16) OVER 50u"/1.27u Ni	
-252	2 X 22		2.100/53.34	.675/17.15	150u"/3.81u TIN	
88880-253	2 X 17	D	1.600/40.64	.105/2.67	15u"/0.38u MIN (NOTE 16) OVER 50u"/1.27u Ni	NOTE 2
88880-254	UNAVAILABLE					
THRU	UNAVAILABLE					
88880-279	UNAVAILABLE					
88880-280	2 X 10	D	.900/22.86	.105/2.67	150u"/3.81u TIN	NOTE 2
88880-281	UNAVAILABLE					
THRU	UNAVAILABLE					
88880-306	UNAVAILABLE					



FCIconnect.com

Copyright FCI

mat'l. code	surface ISO 1302	tolerance ISO 406 ISO 1101	projection 	product family QUICKIE
ltr ecn nopr date	tolerances unless otherwise specified			title HEADER, QUICKIE, SLIM LINE VERTICAL, 4-WALL
K	angles	linear	INCH/MM	scale 1:1
	±2'			
dr	M. CLOUSER	7/11/90		dwg no
enr	M. SMYK	7/11/90		88880
chr	M. SMYK	8/21/91		sheet 7 of 10
app	M. SMYK	8/21/91		size A3
type	Product Customer Drawing			
sheet index	revision sheet			

PRODUCT NO. NOTE 8 & 9	SIZE	STYLE	DIM C	DIM J	PIN PLATING	PLASTIC MATERIAL
88880-307	2 X 5	B	.400/10.16	.097/2.46	30u"/0.76u MIN (NOTE 16) OVER 50u"/1.27u Ni	NOTE 2
-308	2 X 5	B	.400/10.16			
-309	2 X 7	C	.600/15.24			
-310	2 X 8	D	.700/17.78			
-311	2 X 10		.900/22.86			
-312	2 X 12		1.100/27.94			
-313	2 X 13		1.200/30.48			
-314	2 X 15		1.400/35.56			
-315	2 X 17		1.600/40.64			
-316	2 X 20		1.900/48.26			
-317	2 X 22		2.100/53.34			
-318	2 X 25		2.400/60.96			
-319	2 X 30		2.900/73.66	.097/2.46		
-320	2 X 8		.700/17.78	.105/2.67		
-321	2 X 25		2.400/60.96		30u"/0.76u MIN (NOTE 16) OVER 50u"/1.27u Ni	
-322	2 X 8		.700/17.78		50u"/1.27u MIN (NOTE 16) OVER 50u"/1.27u Ni	
-323	2 X 17		1.600/40.64	.105/2.67	50u"/1.27u MIN (NOTE 16) OVER 50u"/1.27u Ni	
-324	2 X 25		2.400/60.96	.120/3.05	15u"/0.38u MIN (NOTE 16) OVER 50u"/1.27u Ni	
-325	2 X 25		2.400/60.96	.150/3.81	30u"/0.76u MIN (NOTE 16) OVER 50u"/1.27u Ni	
-326	2 X 10		.900/22.86	.120/3.05	15u"/0.38u MIN (NOTE 16) OVER 50u"/1.27u Ni	
-327	2 X 17		1.600/40.64	.120/3.05	15u"/0.38u MIN (NOTE 16) OVER 50u"/1.27u Ni	
-328	2 X 25		2.400/60.96	.120/3.05	15u"/0.38u MIN (NOTE 16) OVER 50u"/1.27u Ni	
-329	2 X 13		1.200/30.48	.150/3.81	15u"/0.38u MIN (NOTE 16) OVER 50u"/1.27u Ni	
-330	2 X 25		2.400/60.96		15u"/0.38u MIN (NOTE 16) OVER 50u"/1.27u Ni	
-331	2 X 30		2.900/73.66		15u"/0.38u MIN (NOTE 16) OVER 50u"/1.27u Ni	
-332	2 X 17		1.600/40.64		15u"/0.38u MIN (NOTE 16) OVER 50u"/1.27u Ni	
-333	2 X 20		1.900/48.26	.150/3.81	30u"/0.76u MIN (NOTE 16) OVER 50u"/1.27u Ni	
-334	2 X 10		.900/22.86	.105/2.67	15u"/0.38u MIN (NOTE 16) OVER 50u"/1.27u Ni	
-335	2 X 20		1.900/48.26	.105/2.67	30u"/0.76u MIN (NOTE 16) OVER 50u"/1.27u Ni	
-336	2 X 22	D	2.100/53.34	.105/2.67	30u"/0.76u MIN (NOTE 16) OVER 50u"/1.27u Ni	
-337	2 X 12	D	1.100/27.94	.150/3.81	15u"/0.38u MIN (NOTE 16) OVER 50u"/1.27u Ni	
-338	2 X 5	B	.400/10.16	.150/3.81	15u"/0.38u MIN (NOTE 16) OVER 50u"/1.27u Ni	
-339	2 X 4	B	.300/7.62	.105/2.67	15u"/0.38u MIN (NOTE 16) OVER 50u"/1.27u Ni	
88880-340	2 X 10	D	.900/22.86	.150/3.81	30u"/0.76u MIN (NOTE 16) OVER 50u"/1.27u Ni	NOTE 2

mat'l. code	surface ISO 1302 ✓	tolerance ISO 406 ISO 1101	projection 	product family QUICKIE
ltr ecn nopr date	tolerances unless otherwise specified			title HEADER, QUICKIE, SLIM LINE VERTICAL, 4-WALL
K	angles ±2'	linear XXX±.01/XXX.3 XXX±.005/XXX.13 XXX±.0020/XXX±0.051	INCH/MM scale 1:1	dwg no 88880
	dr M. CLOUSER 7/11/90	engr M. SMYK 7/11/90		shee 8 of 10 size A3
	chr M. SMYK 8/21/91	appd M. SMYK 8/21/91		type Product Customer Drawing
sheet index	revision sheet			

PRODUCT NO.	SIZE	STYLE	DIM C	DIM J	PIN PLATING	PLASTIC MATERIAL
88880-341	2 X 17	D	1.600/40.64	.150/3.81	30u"/0.76u MIN (NOTE 16) OVER 50u"/1.27u Ni	NOTE 2
-342	2 X 10	D	.900/22.86	.150/3.81	15u"/0.38u MIN (NOTE 16) OVER 50u"/1.27u Ni	NOTE 2
-343	2 X 17	D	1.600/40.64	.150/3.81	15u"/0.38u MIN (NOTE 16) OVER 50u"/1.27u Ni	NOTE 2
-344	UNASSIGNED					
-345	2 X 20	D	1.900/48.26	.120/3.05	15u"/0.38u MIN (NOTE 16) OVER 50u"/1.27u Ni	NOTE 2
-346	UNASSIGNED					
-347	UNASSIGNED					
-348	2 X 5	B	.400/10.16	.105/2.67	15u"/0.38u MIN (NOTE 16) OVER 50u"/1.27u Ni	NOTE 2
-349	2 X 7	C	.600/15.24			
-350	2 X 8	D	.700/17.78			
-351	2 X 10		.900/22.86			
-352	2 X 13		1.200/30.48			
-353	2 X 17		1.600/40.64			
-354	2 X 20		1.900/48.26			
-355	2 X 22		2.100/53.34			
-356	2 X 25		2.400/60.96			
-357	2 X 30		2.900/73.66	.105/2.67	15u"/0.38u MIN (NOTE 16) OVER 50u"/1.27u Ni	
-358	2 X 10		.900/22.86	.150/3.81	30u"/0.76u MIN (NOTE 16) OVER 50u"/1.27u Ni	
-359	2 X 17		1.600/40.64	.150/3.81	30u"/0.76u MIN (NOTE 16) OVER 50u"/1.27u Ni	
-360	2 X 12	D	1.100/27.94	.295/7.49	15u"/0.38u MIN (NOTE 16) OVER 50u"/1.27u Ni	NOTE 2
-361	UNASSIGNED					
-362	2 X 5	B	.400/10.16	.105/2.67	30u"/0.76u MIN (NOTE 16) OVER 50u"/1.27u Ni	NOTE 2
-363	2 X 8	D	.700/17.78			
-364	2 X 10	D	.900/22.86			
-365	2 X 15	D	1.400/35.56			
-366	2 X 17	D	1.600/40.64	.105/2.67		
-367	2 X 5	B	.400/10.16	.150/3.81		
-368	2 X 17	D	1.600/40.64	.150/3.81		
88880-369	2 X 25	D	2.400/60.96	.150/3.81	30u"/0.76u MIN (NOTE 16) OVER 50u"/1.27u Ni	NOTE 2

mat'l. code	surface ISO 1302 ✓	tolerance ISO 406 ISO 1101	projection 	product family QUICKIE
ltr ecn nopr date	tolerances unless otherwise specified			title HEADER, QUICKIE, SLIM LINE VERTICAL, 4-WALL
K	angles linear	XXX.X/XXX.X XXX.X/XXX.X XXX.X/XXX.X	INCH/MM	scale 1:1
	dr	M. CLOUSER 7/11/90		dwg no 88880
	enr	M. SMYK 7/11/90		shee 9 of 10 size A3
	chr	M. SMYK 8/21/91		type Product Customer Drawing
	app	M. SMYK 8/21/91		
sheet index	revision sheet			

PRODUCT NO.	SIZE	STYLE	DIM C	DIM J	PIN PLATING	PLASTIC MATERIAL	POLARIZED PIN
88880-404	2 X 20	D	1.900/48.26	.120/3.05	15μ/0.38μm MIN (NOTE 16) OVER 50u"/1.27u Ni	NOTE 2	20
-410	2 X 25		2.400/60.96				-
-418	2 X 10		.900/22.86				14
-423	2 X 25		2.400/60.96				25
-426	2 X 17	D	1.600/40.64				3
88880-427	2 X 5	B	.400/10.16	.120/3.05	15μ/0.38μm MIN (NOTE 16) OVER 50u"/1.27u Ni		1
88880-428	2 X 5	B	.400/10.16	.150/3.81	30u"/0.76u MIN (NOTE 16) OVER 50u"/1.27u Ni	NOTE 2	10

A

A

B

B

C

C

D

D

FCIconnect.com



Copyright FCI

mat'l. code		surface	tolerance	projection	product family
		ISO 1302 ✓	ISO 406 ISO 1101		QUICKIE
ltr	ecnr	ndr	date	tolerances unless otherwise specified	title
K				linear	HEADER, QUICKIE, SLIM LINE VERTICAL, 4-WALL
				angles	INCH/MM
				±2'	scale 1:1
				dr	M. CLOUSER 7/11/90
				enr	M. SMYK 7/11/90
				chr	M. SMYK 8/21/91
				app	M. SMYK 8/21/91
sheet	revision				
index	sheet				



X-ON Electronics

Largest Supplier of Electrical and Electronic Components

Click to view similar products for [Headers & Wire Housings](#) category:

Click to view products by [Amphenol](#) manufacturer:

Other Similar products are found below :

[95000-104TRLF](#) [10135584-644402LF](#) [DF62W-EP2022PCA](#) [95000-106TRLF](#) [DF62W-2022SCA](#) [DF62W-EP2022PC](#) [2203348](#) [DF62W-2022SC](#) [1084018](#) [1029039](#) [1084017](#) [802-10-012-10-002000](#) [1112640](#) [1112639](#) [000-34000](#) [0009482033](#) [0009507031](#) [57102-S06-03LF](#) [57202-S52-04LF](#) [PCN6-15S-2.5E](#) [0039019024](#) [58102-G61-06LF](#) [582553-1](#) [0009508121](#) [0022285053](#) [0050291907](#) [018731A](#) [LY20-4P-DT1-P1E-BR](#) [02.125.8002.8](#) [60101931](#) [60598-1 \(Cut Strip\)](#) [M1625-3R/100](#) [61062-3](#) [61082-181009](#) [636-1427](#) [638009-1](#) [641938-9](#) [641991-4](#) [644168-1](#) [644827-2](#) [647662-1](#) [65039-019ELF](#) [65817-002LF](#) [65817-015LF](#) [65863-015LF](#) [66207-023LF](#) [67016-026LF](#) [67046-001LF](#) [67095-007LF](#) [68002-116](#)