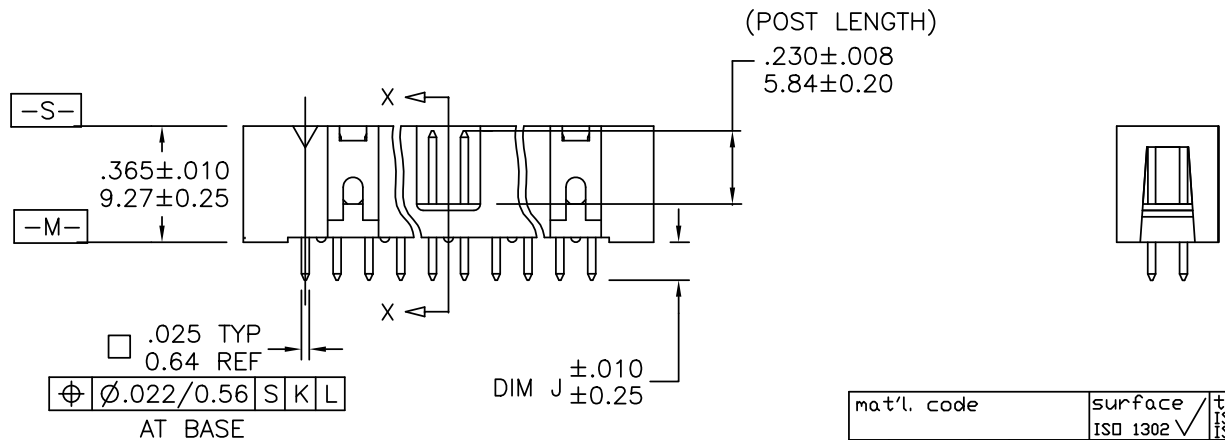
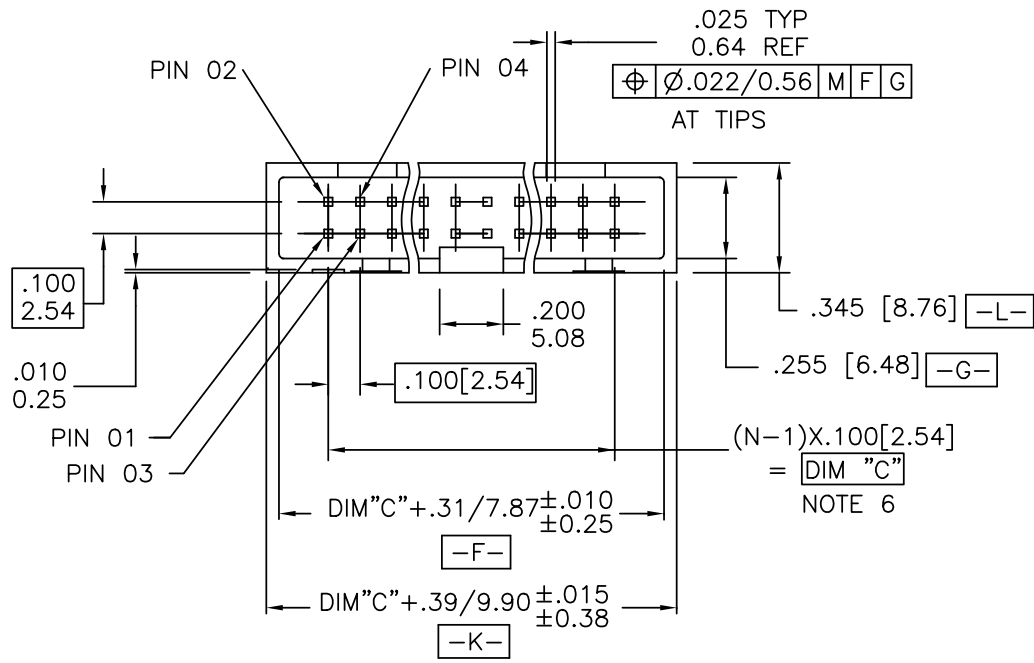


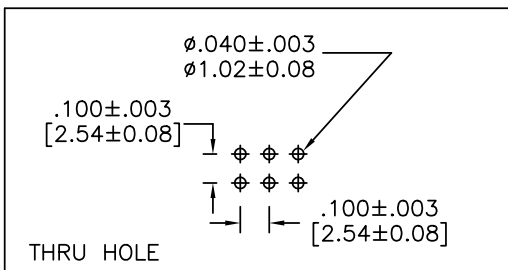
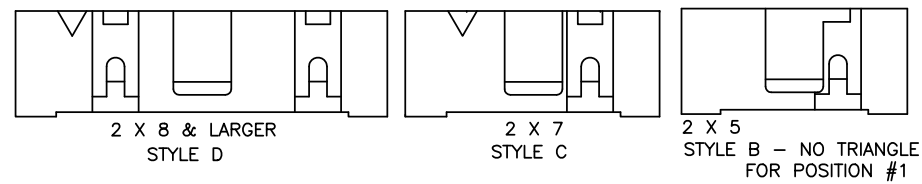
PRODUCT NUMBER
SEE TABLE



mat'l. code		surface	tolerance	projection	product family
		ISO 1302 ✓	ISO 406 ISO 1101		QUICKIE
ltr	ecrn	ndr	date	title	
H	N05-0123	ZC	5/9/05	HEADER, QUICKIE, SLIM LINE	
J	N07-0151	WG	8/02/07	VERTICAL, 4-WALL	
K	EX-N-012098	J.Z	2012-07-04	scale 2:1	
		dr	M. CLOUSER	7/11/90	dwg no
		enr	M. SMYK	7/11/90	sheet of 10
		chr	M. SMYK	8/21/91	size
		app	M. SMYK	8/21/91	A3
		type Product Customer Drawing			
sheet	revision	K	K	K	K
index	sheet	1	2	3	4

PRODUCT NUMBER
SEE TABLE

HEADER STYLE



RECOMMENDED BOARD LAYOUT

NOTES:

- ①. SAME POSITION TOLERANCE APPLIES TO BOTH ENDS OF PINS.
- ②. MOLDING MATERIAL: GLASS-FILLED POLYESTER, FLAME RETARDANT PER UL 94 V-0, COLOR: BLACK.
 3. 1° MAX. DRAFT PERMISSIBLE ON ALL SURFACES.
 4. 3 LBS./1.36 KG MIN. TERMINAL PULL-OUT FORCE.
- ⑤. TERMINAL MATERIAL: PHOSPHORUS BRONZE.
- ⑥. TO DETERMINE DIMENSIONS:
N = NUMBER OF POSITIONS PER ROW
7. SEE 68751 FOR LATCHES.
- ⑧. PART NUMBERS WITH "R" FOLLOWING THE PART NUMBER (EXAMPLE 66506-326 R) HAS RETENTION. (ONLY PARTS WITH .105, .120, AND .150 ROUND OR SQUARE TAILS CAN HAVE RETENTION.) LOCATION IS MANUFACTURERS OPTION.
FOR CONNECTORS:
RETENTIVE LEG APPLICABLE TO TAIL LENGTHS .125/3.18 MAX. 5LB/2.3KG MAX INSERTION FORCE AND .25LB/1KG MIN RETENTION FORCE PER RETENTIVE PIN USING .062/1.57 THICK CIRCUIT BOARD AND RECOMMENDED HOLE PATTERN. RETENTIVE LOCATION AT THE DISCRETION OF THE MANUFACTURER. RETENTION PIN MAY BE SHIFTED TO NEXT POSITION.
- ⑨. PART NUMBERS WITH "T" FOLLOWING PART NUMBER (EXAMPLE 66506-068 T IS PACKED IN TUBES.) (CALL PRODUCT MANAGER FOR AVAILABILITY.)
- ⑩. MAY BE ORDERED WITH "G" PACK PACKAGING BY ADDING "G" TO DASH NUMBER.
11. UNDER PLATING: $50\mu"/1.27\mu\text{m}$ Ni.
- ⑫. ADD "LF" SUFFIX AT THE END OF PART NUMBER FOR LEAD FREE OPTION & PART NUMBERS WITH "LF" SUFFIX ADDED IN THE TABLE ARE LEAD FREE.
- ⑬. IF "LF" P/N THE PRODUCT MEETS EUROPEAN UNION DIRECTIVES AND OTHER COUNTRY REGULATION AS DESCRIBED IN GS-22-008.
14. THE HOUSING WILL WITHSTAND EXPOSURE TO 260°C PEAK TEMPERATURE FOR 15 SECONDS IN A WAVE SOLDER APPLICATION WITH A 1.57mm MINIMUM THICK CIRCUIT BOARD. SEE APPLICATION NOTES/PROCEDURES IF THEY ARE AVAILABLE.
- ⑮. "THIS PRODUCT HAS 100% TIN PLATING IN THE INTERFACE AND HAS NOT BEEN TESTED FOR WHISKER GROWTH IN ALL INTERCONNECT ENVIRONMENTS."
- ⑯. PLATING OPTIONS:
PERFORMANCE PLATING WILL BE EITHER GOLD OR GXT ON CONTACT OR TAIL, OPTIONALLY TIN ON TAIL.

mat'l. code		surface	tolerance	projection	product family
		ISD 1302 ✓	ISD 406 ISD 1101		QUICKIE
l	tr	ec	n	o	d
date	tolerances unless otherwise specified				title
K	angles	linear	$\pm 0.01 / \pm 0.3$ $\pm 0.005 / \pm 0.13$ $\pm 0.002 / \pm 0.051$	INCH/MM	HEADER, QUICKIE, SLIM LINE VERTICAL, 4-WALL
	$\pm 2'$			scale 1:1	
dr	M. CLOUSER	7/11/90			
engr	M. SMYK	7/11/90			
chr	M. SMYK	8/21/91			
appd	M. SMYK	8/21/91			
sheet	revision				
index	sheet				

PRODUCT NO.	SIZE	STYLE	DIM C	DIM J	PIN PLATING	PLASTIC MATERIAL
NOTE 8 & 9						
88880-001	2 X 5	B	.400/10.16	.105/2.67	30u"/0.76u MIN (NOTE 16) OVER 50u"/1.27u Ni	NOTE 2
-002				.150/3.81	30u"/0.76u MIN (NOTE 16) OVER 50u"/1.27u Ni	
-003				.675/17.15	30u"/0.76u MIN (NOTE 16) OVER 50u"/1.27u Ni	
-004				.105/2.67	150u"/3.81u TIN	
-005				.150/3.81	150u"/3.81u TIN	
-006	2 X 5	B	.400/10.16	.675/17.15	150u"/3.81u TIN	
-007	2 X 10	D	.900/22.86	.105/2.67	30u"/0.76u MIN (NOTE 16) OVER 50u"/1.27u Ni	
-008				.150/3.81	30u"/0.76u MIN (NOTE 16) OVER 50u"/1.27u Ni	
-009				.675/17.15	30u"/0.76u MIN (NOTE 16) OVER 50u"/1.27u Ni	
-010				.105/2.67	150u"/3.81u TIN	
-011				.150/3.81	150u"/3.81u TIN	
-012	2 X 10		.900/22.86	.675/17.15	150u"/3.81u TIN	
-013	2 X 13		1.200/30.48	.105/2.67	30u"/0.76u MIN (NOTE 16) OVER 50u"/1.27u Ni	
-014				.150/3.81	30u"/0.76u MIN (NOTE 16) OVER 50u"/1.27u Ni	
-015				.675/17.15	30u"/0.76u MIN (NOTE 16) OVER 50u"/1.27u Ni	
-016				.105/2.67	150u"/3.81u TIN	
-017				.150/3.81	150u"/3.81u TIN	
-018	2 X 13		1.200/30.48	.675/17.15	150u"/3.81u TIN	
-019	2 X 17		1.600/40.64	.105/2.67	30u"/0.76u MIN (NOTE 16) OVER 50u"/1.27u Ni	
-020				.150/3.81	30u"/0.76u MIN (NOTE 16) OVER 50u"/1.27u Ni	
-021				.675/17.15	30u"/0.76u MIN (NOTE 16) OVER 50u"/1.27u Ni	
-022				.105/2.67	150u"/3.81u TIN	
-023				.150/3.81	150u"/3.81u TIN	
-024	2 X 17		1.600/40.64	.675/17.15	150u"/3.81u TIN	
-025	2 X 20		1.900/48.26	.105/2.67	30u"/0.76u MIN (NOTE 16) OVER 50u"/1.27u Ni	
-026				.150/3.81	30u"/0.76u MIN (NOTE 16) OVER 50u"/1.27u Ni	
-027				.675/17.15	30u"/0.76u MIN (NOTE 16) OVER 50u"/1.27u Ni	
-028				.105/2.67	150u"/3.81u TIN	
-029				.150/3.81	150u"/3.81u TIN	
-030	2 X 20		1.900/48.26	.675/17.15	150u"/3.81u TIN	
-031	2 X 25		2.400/60.96	.105/2.67	30u"/0.76u MIN (NOTE 16) OVER 50u"/1.27u Ni	
-032				.150/3.81	30u"/0.76u MIN (NOTE 16) OVER 50u"/1.27u Ni	
-033				.675/17.15	30u"/0.76u MIN (NOTE 16) OVER 50u"/1.27u Ni	
-034				.105/2.67	150u"/3.81u TIN	
88880-035	2 X 25	D	2.400/60.96	.150/3.81	150u"/3.81u TIN	NOTE 2

mat'l. code	surface ISO 1302 ✓	tolerance ISO 406 ISO 1101	projection 	product family QUICKIE
ltr ecn nopr date	tolerances unless otherwise specified			title HEADER, QUICKIE, SLIM LINE VERTICAL, 4-WALL
K	angles ±2'	linear XXX±.01/XXX±.03 XXX±.005/XXX±.013 XXX±.0020/XXX±.0051	INCH/MM scale 1:1	dwg no 88880
	dr M. CLOUSER 7/11/90	engr M. SMYK 7/11/90		shee 5 of 10 size A3
	chr M. SMYK 8/21/91	appd M. SMYK 8/21/91		type Product Customer Drawing
sheet index	revision sheet			

PRODUCT NO.	SIZE	STYLE	DIM C	DIM J	PIN PLATING	PLASTIC MATERIAL
NOTE 8 & 9						
88880-036	2 X 25	D	2.400/60.96	.675/17.15	150u"/3.81u TIN	NOTE 2
-037	2 X 7	C	.600/15.24	.105/2.67	30u"/0.76u MIN (NOTE 16) OVER 50u"/1.27u Ni	
-038				.150/3.81	30u"/0.76u MIN (NOTE 16) OVER 50u"/1.27u Ni	
-039				.675/17.15	30u"/0.76u MIN (NOTE 16) OVER 50u"/1.27u Ni	
-040				.105/2.67	150u"/3.81u TIN	
-041				.150/3.81	150u"/3.81u TIN	
-042	2 X 7	C	.600/15.24	.675/17.15	150u"/3.81u TIN	
-043	2 X 8	D	.700/17.78	.105/2.67	30u"/0.76u MIN (NOTE 16) OVER 50u"/1.27u Ni	
-044				.150/3.81	30u"/0.76u MIN (NOTE 16) OVER 50u"/1.27u Ni	
-045				.675/17.15	30u"/0.76u MIN (NOTE 16) OVER 50u"/1.27u Ni	
-046				.105/2.67	150u"/3.81u TIN	
-047				.150/3.81	150u"/3.81u TIN	
-048	2 X 8	D	.700/17.78	.675/17.15	150u"/3.81u TIN	
-049	2 X 5	B	.400/10.16	.150/3.81	30u"/0.76u MIN (NOTE 16) OVER 50u"/1.27u Ni	
-050	2 X 10	D	.900/22.86			
-051	2 X 13		1.200/30.48			
-052	2 X 17		1.600/40.64			
-053	2 X 20		1.900/48.26			
-054	2 X 25	D	2.400/60.96			
-055	2 X 7	C	.600/15.24			
-056	2 X 8	D	.700/17.78	.150/3.81		
-057	2 X 30		2.900/73.66	.105/2.67		
-058				.150/3.81		
-059				.675/17.15	30u"/0.76u MIN (NOTE 16) OVER 50u"/1.27u Ni	
-060				.105/2.67	150u"/3.81u TIN	
-061				.150/3.81	150u"/3.81u TIN	
-062				.675/17.15	150u"/3.81u TIN	
-063				.105/2.67	30u"/0.76u MIN (NOTE 16) OVER 50u"/1.27u Ni	
-064				.150/3.81		
-065	2 X 30	D	2.900/73.66	.675/17.15		
-066	2 X 5	B	.400/10.16	.105/2.67		
-067	2 X 5	B	.400/10.16	.675/17.15		
-068	2 X 7	C	.600/15.24	.105/2.67		
-069	2 X 7	C	.600/15.24	.675/17.15		
88880-070	2 X 8	D	.700/17.78	.105/2.67	30u"/0.76u MIN (NOTE 16) OVER 50u"/1.27u Ni	NOTE 2

mat'l. code	surface ISO 1302 ✓	tolerance ISO 406 ISO 1101	projection 	product family QUICKIE
ltr ecn nopr date	tolerances unless otherwise specified			title HEADER, QUICKIE, SLIM LINE VERTICAL, 4-WALL
K	angles ±2'	linear XXX±.01/XXX±.03 XXX±.005/XXX±.013 XXX±.0020/XXX±0.051	INCH/MM scale 1:1	dwg no 88880
	dr M. CLOUSER 7/11/90	engr M. SMYK 7/11/90		shee# of 10 size A3
	chr M. SMYK 8/21/91	appd M. SMYK 8/21/91		type Product Customer Drawing
sheet index	revision sheet			

PRODUCT NO.	SIZE	STYLE	DIM C	DIM J	PIN PLATING	PLASTIC MATERIAL
NOTE 8 & 9						
88880-071	2 X 8	D	.700/17.78	.675/17.15	30u"/0.76u MIN (NOTE 16) OVER 50u"/1.27u Ni	NOTE 2
-072	2 X 10		.900/22.86	.105/2.67		
-073	2 X 10		.900/22.86	.675/17.15		
-074	2 X 13		1.200/30.48	.105/2.67		
-075	2 X 13		1.200/30.48	.675/17.15		
-076	2 X 17		1.600/40.64	.105/2.67		
-077	2 X 17		1.600/40.64	.675/17.15		
-078	2 X 20		1.900/48.26	.105/2.67		
-079	2 X 20		1.900/48.26	.675/17.15		
-080	2 X 25		2.400/60.96	.105/2.67		
-081	2 X 25	D	2.400/60.96	.675/17.15	30u"/0.76u MIN (NOTE 16) OVER 50u"/1.27u Ni	
-082	2 X 5	B	.400/10.16	.105/2.67	15u"/0.38u MIN (NOTE 16) OVER 50u"/1.27u Ni	
-083	2 X 5	B	.400/10.16	.150/3.81		
-084	2 X 5	B	.400/10.16	.675/17.15		
-085	2 X 7	C	.600/15.24	.105/2.67		
-086	2 X 7	C	.600/15.24	.150/3.81		
-087	2 X 7	C	.600/15.24	.675/17.15		
-088	2 X 8	D	.700/17.78	.105/2.67		
-089	2 X 8		.700/17.78	.150/3.81		
-090	2 X 8		.700/17.78	.675/17.15		
-091	2 X 10		.900/22.86	.105/2.67		
-092	2 X 10		.900/22.86	.150/3.81		
-093	2 X 10		.900/22.86	.675/17.15		
-094	2 X 13		1.200/30.48	.105/2.67		
-095	2 X 13		1.200/30.48	.150/3.81		
-096	2 X 13		1.200/30.48	.675/17.15		
-097	2 X 17		1.600/40.64	.105/2.67		
-098	2 X 17		1.600/40.64	.150/3.81		
-099	2 X 17		1.600/40.64	.675/17.15		
-100	2 X 20		1.900/48.26	.105/2.67		
-101	2 X 20		1.900/48.26	.150/3.81		
-102	2 X 20		1.900/48.26	.675/17.15		
-103	2 X 25		2.400/60.96	.105/2.67		
-104	2 X 25		2.400/60.96	.150/3.81		
88880-105	2 X 25	D	2.400/60.96	.675/17.15	15u"/0.38u MIN (NOTE 16) OVER 50u"/1.27u Ni	NOTE 2

mat'l. code	surface ISO 1302 ✓	tolerance ISO 406 ISO 1101	projection 	product family QUICKIE
ltr ecn nopr date	tolerances unless otherwise specified			title HEADER, QUICKIE, SLIM LINE VERTICAL, 4-WALL
K	angles	linear	INCH/MM	shee 5 of 10 size
	±2'		scale 1:1	88880 A3
	dr M. CLOUSER	7/11/90		type Product Customer Drawing
	engr M. SMYK	7/11/90		
	chr M. SMYK	8/21/91		
	appd M. SMYK	8/21/91		
sheet index	revision sheet			

PRODUCT NO. NOTE 8 & 9	SIZE	STYLE	DIM C	DIM J	PIN PLATING	PLASTIC MATERIAL
88880-106	2 X 30	D	2.900/73.66	.105/2.67	15u"/0.38u MIN (NOTE 16) OVER 50u"/1.27u Ni	NOTE 2
-107	2 X 30	D	2.900/73.66	.150/3.81	15u"/0.38u MIN (NOTE 16) OVER 50u"/1.27u Ni	
-108	2 X 30	D	2.900/73.66	.675/17.15	15u"/0.38u MIN (NOTE 16) OVER 50u"/1.27u Ni	
-109	2 X 5	B	.400/10.16	.105/2.67	30u"/0.76u MIN (NOTE 16) OVER 50u"/1.27u Ni	
-110				.150/3.81	30u"/0.76u MIN (NOTE 16) OVER 50u"/1.27u Ni	
-111				.675/17.15	30u"/0.76u MIN (NOTE 16) OVER 50u"/1.27u Ni	
-112				.105/2.67	150u"/3.81u TIN	
-113				.150/3.81	150u"/3.81u TIN	
-114				.675/17.15	150u"/3.81u TIN	
-115				.105/2.67	15u"/0.38u MIN (NOTE 16) OVER 50u"/1.27u Ni	
-116				.150/3.81	15u"/0.38u MIN (NOTE 16) OVER 50u"/1.27u Ni	
-117				.675/17.15	15u"/0.38u MIN (NOTE 16) OVER 50u"/1.27u Ni	
-118				.105/2.67	30u"/0.76u MIN (NOTE 16) OVER 50u"/1.27u Ni	
-119				.150/3.81	30u"/0.76u MIN (NOTE 16) OVER 50u"/1.27u Ni	
88880-120	2 X 5	B	.400/10.16	.675/17.15	30u"/0.76u MIN (NOTE 16) OVER 50u"/1.27u Ni	NOTE 2
88880-121	DISCONTINUED					
THRU	DISCONTINUED					
88880-216	DISCONTINUED					
88880-217	2 X 12	D	1.100/27.94	.105/2.67	15u"/0.38u MIN (NOTE 16) OVER 50u"/1.27u Ni	NOTE 2
-218					30u"/0.76u MIN (NOTE 16) OVER 50u"/1.27u Ni	
-219					30u"/0.76u MIN (NOTE 16) OVER 50u"/1.27u Ni	
-220				.105/2.67	150u"/3.81u TIN	
-221				.150/3.81	15u"/0.38u MIN (NOTE 16) OVER 50u"/1.27u Ni	
-222					30u"/0.76u MIN (NOTE 16) OVER 50u"/1.27u Ni	
-223					30u"/0.76u MIN (NOTE 16) OVER 50u"/1.27u Ni	
-224				.150/3.81	150u"/3.81u TIN	
-225				.675/17.15	15u"/0.38u MIN (NOTE 16) OVER 50u"/1.27u Ni	
-226					30u"/0.76u MIN (NOTE 16) OVER 50u"/1.27u Ni	
-227					30u"/0.76u MIN (NOTE 16) OVER 50u"/1.27u Ni	
-228	2 X 12		1.100/27.94	.675/17.15	150u"/3.81u TIN	
-229	2 X 15		1.400/35.56	.105/2.67	15u"/0.38u MIN (NOTE 16) OVER 50u"/1.27u Ni	
-230					30u"/0.76u MIN (NOTE 16) OVER 50u"/1.27u Ni	
-231					30u"/0.76u MIN (NOTE 16) OVER 50u"/1.27u Ni	
-232				.105/2.67	150u"/3.81u TIN	
88880-233	2 X 15	D	1.400/35.56	.150/3.81	15u"/0.38u MIN (NOTE 16) OVER 50u"/1.27u Ni	NOTE 2

mat'l. code	surface ISO 1302 ✓	tolerance ISO 406 ISO 1101	projection 	product family QUICKIE
ltr ecn nopr date	tolerances unless otherwise specified			title HEADER, QUICKIE, SLIM LINE VERTICAL, 4-WALL
K	angles linear	XXX-01/XXX-03 XXX-005/XXX-013 XXX-0020/XXX-0051	INCH/MM scale 1:1	dwg no 88880
	dr M. CLOUSER 7/11/90			shee 6 of 10 size A3
	engr M. SMYK 7/11/90			type Product Customer Drawing
	chr M. SMYK 8/21/91			
sheet index	revision sheet			

PRODUCT NO.	SIZE	STYLE	DIM C	DIM J	PIN PLATING	PLASTIC MATERIAL
88880-234	2 X 15	D	1.400/35.56	.150/3.81	30u"/0.76u MIN (NOTE 16) OVER 50u"/1.27u Ni	NOTE 2
-235				.150/3.81	30u"/0.76u MIN (NOTE 16) OVER 50u"/1.27u Ni	
-236				.150/3.81	150u"/3.81u TIN	
-237				.675/17.15	15u"/0.38u MIN (NOTE 16) OVER 50u"/1.27u Ni	
-238					30u"/0.76u MIN (NOTE 16) OVER 50u"/1.27u Ni	
-239					30u"/0.76u MIN (NOTE 16) OVER 50u"/1.27u Ni	
-240	2 X 15		1.400/35.56	.675/17.15	150u"/3.81u TIN	
-241	2 X 22		2.100/53.34	.105/2.67	15u"/0.38u MIN (NOTE 16) OVER 50u"/1.27u Ni	
-242					30u"/0.76u MIN (NOTE 16) OVER 50u"/1.27u Ni	
-243					30u"/0.76u MIN (NOTE 16) OVER 50u"/1.27u Ni	
-244				.105/2.67	150u"/3.81u TIN	
-245				.150/3.81	15u"/0.38u MIN (NOTE 16) OVER 50u"/1.27u Ni	
-246					30u"/0.76u MIN (NOTE 16) OVER 50u"/1.27u Ni	
-247					30u"/0.76u MIN (NOTE 16) OVER 50u"/1.27u Ni	
-248				.150/3.81	150u"/3.81u TIN	
-249				.675/17.15	15u"/0.38u MIN (NOTE 16) OVER 50u"/1.27u Ni	
-250					30u"/0.76u MIN (NOTE 16) OVER 50u"/1.27u Ni	
-251					30u"/0.76u MIN (NOTE 16) OVER 50u"/1.27u Ni	
-252	2 X 22		2.100/53.34	.675/17.15	150u"/3.81u TIN	
88880-253	2 X 17	D	1.600/40.64	.105/2.67	15u"/0.38u MIN (NOTE 16) OVER 50u"/1.27u Ni	NOTE 2
88880-254	UNAVAILABLE					
THRU	UNAVAILABLE					
88880-279	UNAVAILABLE					
88880-280	2 X 10	D	.900/22.86	.105/2.67	150u"/3.81u TIN	NOTE 2
88880-281	UNAVAILABLE					
THRU	UNAVAILABLE					
88880-306	UNAVAILABLE					

mat'l. code	surface ISO 1302 ✓	tolerance ISO 406 ISO 1101	projection 	product family QUICKIE
ltr ecn nopr date	tolerances unless otherwise specified			title HEADER, QUICKIE, SLIM LINE VERTICAL, 4-WALL
K	angles linear ±2'	XXX-01/XXX-03 XXX-005/XXX-013 XXX-0020/XXX-0051	INCH/MM scale 1:1	dwg no 88880
	dr M. CLOUSER 7/11/90	engr M. SMYK 7/11/90		shee 7 of 10 size A3
	chr M. SMYK 8/21/91	appd M. SMYK 8/21/91		type Product Customer Drawing
sheet index	revision sheet			



FCIconnect.com

Copyright FCI

PRODUCT NO. NOTE 8 & 9	SIZE	STYLE	DIM C	DIM J	PIN PLATING	PLASTIC MATERIAL
88880-307	2 X 5	B	.400/10.16	.097/2.46	30u"/0.76u MIN (NOTE 16) OVER 50u"/1.27u Ni	NOTE 2
-308	2 X 5	B	.400/10.16			
-309	2 X 7	C	.600/15.24			
-310	2 X 8	D	.700/17.78			
-311	2 X 10		.900/22.86			
-312	2 X 12		1.100/27.94			
-313	2 X 13		1.200/30.48			
-314	2 X 15		1.400/35.56			
-315	2 X 17		1.600/40.64			
-316	2 X 20		1.900/48.26			
-317	2 X 22		2.100/53.34			
-318	2 X 25		2.400/60.96			
-319	2 X 30		2.900/73.66	.097/2.46		
-320	2 X 8		.700/17.78	.105/2.67		
-321	2 X 25		2.400/60.96		30u"/0.76u MIN (NOTE 16) OVER 50u"/1.27u Ni	
-322	2 X 8		.700/17.78		50u"/1.27u MIN (NOTE 16) OVER 50u"/1.27u Ni	
-323	2 X 17		1.600/40.64	.105/2.67	50u"/1.27u MIN (NOTE 16) OVER 50u"/1.27u Ni	
-324	2 X 25		2.400/60.96	.120/3.05	15u"/0.38u MIN (NOTE 16) OVER 50u"/1.27u Ni	
-325	2 X 25		2.400/60.96	.150/3.81	30u"/0.76u MIN (NOTE 16) OVER 50u"/1.27u Ni	
-326	2 X 10		.900/22.86	.120/3.05	15u"/0.38u MIN (NOTE 16) OVER 50u"/1.27u Ni	
-327	2 X 17		1.600/40.64	.120/3.05	15u"/0.38u MIN (NOTE 16) OVER 50u"/1.27u Ni	
-328	2 X 25		2.400/60.96	.120/3.05	15u"/0.38u MIN (NOTE 16) OVER 50u"/1.27u Ni	
-329	2 X 13		1.200/30.48	.150/3.81	15u"/0.38u MIN (NOTE 16) OVER 50u"/1.27u Ni	
-330	2 X 25		2.400/60.96		15u"/0.38u MIN (NOTE 16) OVER 50u"/1.27u Ni	
-331	2 X 30		2.900/73.66		15u"/0.38u MIN (NOTE 16) OVER 50u"/1.27u Ni	
-332	2 X 17		1.600/40.64		15u"/0.38u MIN (NOTE 16) OVER 50u"/1.27u Ni	
-333	2 X 20		1.900/48.26	.150/3.81	30u"/0.76u MIN (NOTE 16) OVER 50u"/1.27u Ni	
-334	2 X 10		.900/22.86	.105/2.67	15u"/0.38u MIN (NOTE 16) OVER 50u"/1.27u Ni	
-335	2 X 20		1.900/48.26	.105/2.67	30u"/0.76u MIN (NOTE 16) OVER 50u"/1.27u Ni	
-336	2 X 22	D	2.100/53.34	.105/2.67	30u"/0.76u MIN (NOTE 16) OVER 50u"/1.27u Ni	
-337	2 X 12	D	1.100/27.94	.150/3.81	15u"/0.38u MIN (NOTE 16) OVER 50u"/1.27u Ni	
-338	2 X 5	B	.400/10.16	.150/3.81	15u"/0.38u MIN (NOTE 16) OVER 50u"/1.27u Ni	
-339	2 X 4	B	.300/7.62	.105/2.67	15u"/0.38u MIN (NOTE 16) OVER 50u"/1.27u Ni	
88880-340	2 X 10	D	.900/22.86	.150/3.81	30u"/0.76u MIN (NOTE 16) OVER 50u"/1.27u Ni	NOTE 2

mat'l. code	surface ISO 1302 ✓	tolerance ISO 406 ISO 1101	projection 	product family QUICKIE
ltr ecn nopr date	tolerances unless otherwise specified			title HEADER, QUICKIE, SLIM LINE VERTICAL, 4-WALL
K	angles ±2'	linear XXX±.01/XXX.3 XXX±.005/XXX.13 XXX±.0020/XXX±0.051	INCH/MM scale 1:1	dwg no 88880
	dr M. CLOUSER 7/11/90	engr M. SMYK 7/11/90		shee 8 of 10 size A3
	chr M. SMYK 8/21/91	appd M. SMYK 8/21/91		type Product Customer Drawing
sheet index	revision sheet			

PRODUCT NO.	SIZE	STYLE	DIM C	DIM J	PIN PLATING	PLASTIC MATERIAL
88880-341	2 X 17	D	1.600/40.64	.150/3.81	30u"/0.76u MIN (NOTE 16) OVER 50u"/1.27u Ni	NOTE 2
-342	2 X 10	D	.900/22.86	.150/3.81	15u"/0.38u MIN (NOTE 16) OVER 50u"/1.27u Ni	NOTE 2
-343	2 X 17	D	1.600/40.64	.150/3.81	15u"/0.38u MIN (NOTE 16) OVER 50u"/1.27u Ni	NOTE 2
-344	UNASSIGNED					
-345	2 X 20	D	1.900/48.26	.120/3.05	15u"/0.38u MIN (NOTE 16) OVER 50u"/1.27u Ni	NOTE 2
-346	UNASSIGNED					
-347	UNASSIGNED					
-348	2 X 5	B	.400/10.16	.105/2.67	15u"/0.38u MIN (NOTE 16) OVER 50u"/1.27u Ni	NOTE 2
-349	2 X 7	C	.600/15.24			
-350	2 X 8	D	.700/17.78			
-351	2 X 10		.900/22.86			
-352	2 X 13		1.200/30.48			
-353	2 X 17		1.600/40.64			
-354	2 X 20		1.900/48.26			
-355	2 X 22		2.100/53.34			
-356	2 X 25		2.400/60.96			
-357	2 X 30		2.900/73.66	.105/2.67	15u"/0.38u MIN (NOTE 16) OVER 50u"/1.27u Ni	
-358	2 X 10		.900/22.86	.150/3.81	30u"/0.76u MIN (NOTE 16) OVER 50u"/1.27u Ni	
-359	2 X 17		1.600/40.64	.150/3.81	30u"/0.76u MIN (NOTE 16) OVER 50u"/1.27u Ni	
-360	2 X 12	D	1.100/27.94	.295/7.49	15u"/0.38u MIN (NOTE 16) OVER 50u"/1.27u Ni	NOTE 2
-361	UNASSIGNED					
-362	2 X 5	B	.400/10.16	.105/2.67	30u"/0.76u MIN (NOTE 16) OVER 50u"/1.27u Ni	NOTE 2
-363	2 X 8	D	.700/17.78			
-364	2 X 10	D	.900/22.86			
-365	2 X 15	D	1.400/35.56			
-366	2 X 17	D	1.600/40.64	.105/2.67		
-367	2 X 5	B	.400/10.16	.150/3.81		
-368	2 X 17	D	1.600/40.64	.150/3.81		
88880-369	2 X 25	D	2.400/60.96	.150/3.81	30u"/0.76u MIN (NOTE 16) OVER 50u"/1.27u Ni	NOTE 2

mat'l. code	surface ISO 1302 ✓	tolerance ISO 406 ISO 1101	projection 	product family QUICKIE
ltr ecn nopr date	tolerances unless otherwise specified			title HEADER, QUICKIE, SLIM LINE VERTICAL, 4-WALL
K	angles linear	XXX.X/XXX.X XXX.X/XXX.X XXX.X/XXX.X	INCH/MM	scale 1:1
	dr	M. CLOUSER 7/11/90		dwg no
	enr	M. SMYK 7/11/90		88880
	chr	M. SMYK 8/21/91		sheet 9 of 10
	app	M. SMYK 8/21/91		size A3
sheet index	revision sheet			type Product Customer Drawing

PRODUCT NO.	SIZE	STYLE	DIM C	DIM J	PIN PLATING	PLASTIC MATERIAL	POLARIZED PIN
NOTE 8 & 9							
88880-404	2 X 20	D	1.900/48.26	.120/3.05	15μ/0.38μm MIN (NOTE 16) OVER 50u"/1.27u Ni	NOTE 2	20
-410	2 X 25		2.400/60.96				-
-418	2 X 10		.900/22.86				14
-423	2 X 25		2.400/60.96				25
-426	2 X 17	D	1.600/40.64				3
88880-427	2 X 5	B	.400/10.16	.120/3.05	15μ/0.38μm MIN (NOTE 16) OVER 50u"/1.27u Ni		1
88880-428	2 X 5	B	.400/10.16	.150/3.81	30u"/0.76u MIN (NOTE 16) OVER 50u"/1.27u Ni	NOTE 2	10

A

A

B

B

C

C

D

D

FCIconnect.com



Copyright FCI

mat'l. code		surface	tolerance	projection	product family
		ISO 1302 ✓	ISO 406 ISO 1101		QUICKIE
ltr	ecnr	ndr	date	title	
K				HEADER, QUICKIE, SLIM LINE VERTICAL, 4-WALL	
		angles	linear	INCH/MM	
		±2'	XXXX.01/XXXX.03 XXXX.005/XXXX.13 XXXX.0020/XXXX.051	scale 1:1	
		dr	M. CLOUSER	7/11/90	dwg no
		enr	M. SMYK	7/11/90	sheet 10 of 10
		chr	M. SMYK	8/21/91	size
		app	M. SMYK	8/21/91	A3
		type Product Customer Drawing			
sheet	revision				
index	sheet				

X-ON Electronics

Largest Supplier of Electrical and Electronic Components

Click to view similar products for [Headers & Wire Housings](#) category:

Click to view products by [Amphenol](#) manufacturer:

Other Similar products are found below :

[95000-104TRLF](#) [10135584-644402LF](#) [DF62W-EP2022PCA](#) [95000-106TRLF](#) [DF62W-2022SCA](#) [DF62W-EP2022PC](#) [2203348](#) [DF62W-2022SC](#) [1084018](#) [1029039](#) [1084017](#) [802-10-012-10-002000](#) [1112640](#) [1112639](#) [891-007-9SS-BST1T](#) [000-34000](#) [0008550134](#) [0009482033](#) [0009507031](#) [57102-F02-18ULF](#) [57102-S06-03LF](#) [57202-S52-04LF](#) [PCN6-15S-2.5E](#) [0039019024](#) [58102-G61-06LF](#) [582553-1](#) [0009485154](#) [0009508121](#) [0022285053](#) [0050291907](#) [018731A](#) [LY20-4P-DT1-P1E-BR](#) [02.125.8002.8](#) [60101931](#) [60598-1 \(Cut Strip\)](#) [M1625-3R/100](#) [61062-3](#) [61082-181009](#) [CSU011177004](#) [636-1427](#) [638009-1](#) [641938-9](#) [641991-4](#) [644168-1](#) [644827-2](#) [647662-1](#) [65039-019ELF](#) [65692-001LF](#) [65781-018](#) [65781-047](#)