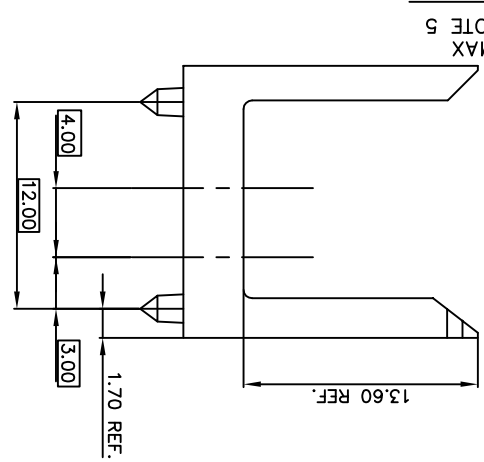
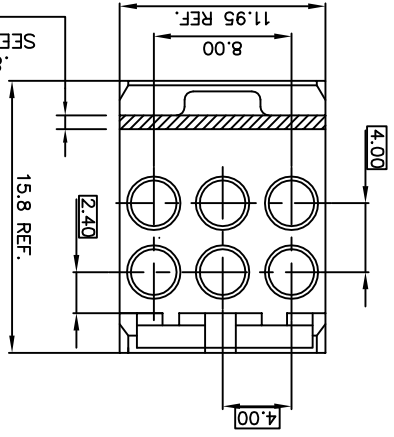
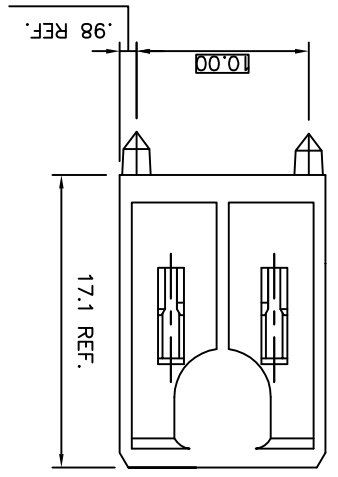


6. PART NUMBER WITH "L" SUFFIX AT THE END IS LEAD FREE.

7. THIS PRODUCT MEETS EUROPEAN UNION DIRECTIVES AND OTHER COUNTRY REGULATION AS DESCRIBED IN GS-22-008.

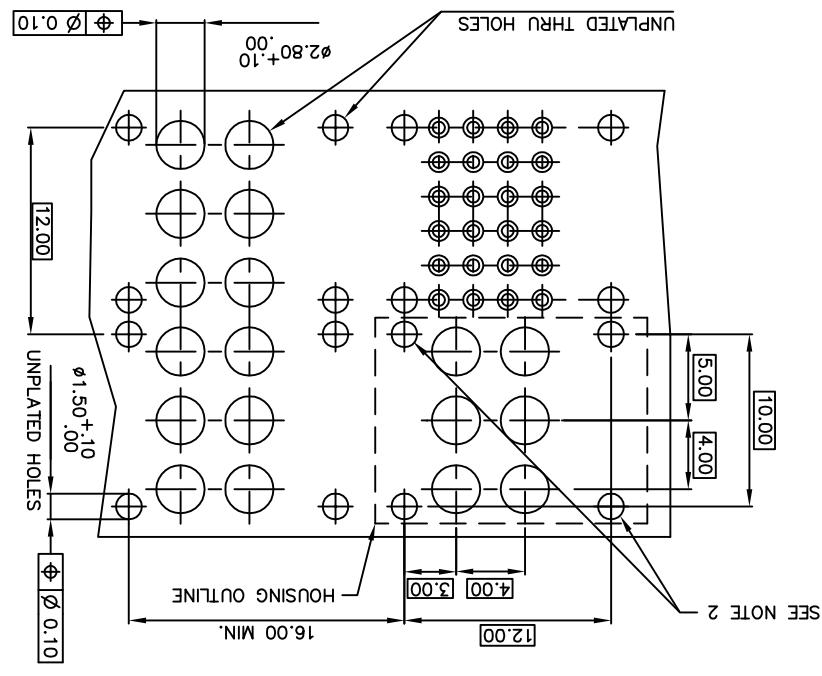
8. THE HOUSING WILL WITHSTAND EXPOSURE TO 260°C PEAK TEMPERATURE FOR 15 SECONDS IN A WAVE SOLDER APPLICATION WITH A 1.5mm MINIMUM THICK CIRCUIT BOARD OR FOR 10-20 SECONDS IN A CONVECTION, INFRA-RED OR VAPOR PHASE REFLOW OVEN. SEE APPLICATION NOTES/PROCEDURES IF THEY ARE AVAILABLE.



PRODUCT NUMBER  
88913-101LF

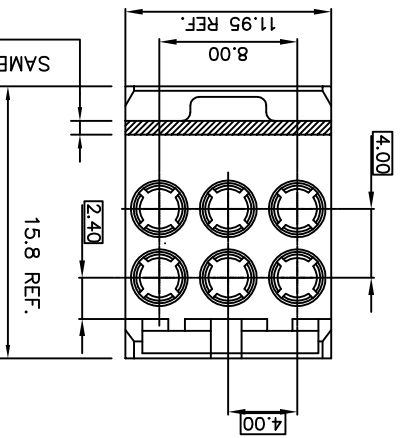
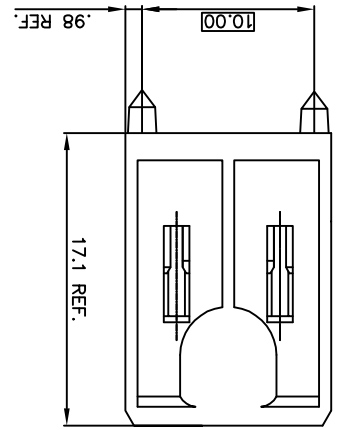
RECOMMENDED HOLE PATTERN COMPONENT SIDE  
2MM SIGNAL HOLE PATTERN SHOWN FOR REFERENCE ONLY

- 1. MATERIAL: LCP, 30% GLASS FILLED  
COLOR: NATURAL  
FLAME RETARDANT ACC. UL 94-V0
- 2. THESE HOLES NEEDED WHEN USED IN A CENTER PLANE APPLICATION WITH A HYBRID ON EACH SIDE OF THE CENTER PLANE.
- 3. THE -101LF (SHEET 1) HOUSING IS TO BE USED WITH MINI-COAX PLUG/PLUG INSERTS, 70296-002LF.
- 4. THE -111LF (SHT 2) AND -121LF (SHT 3) HOUSING, IS TO BE USED WITH MINI-COAX INSERTS 88971 OR 88978.
- 5. THIS AREA MAY CONTAIN IDENTIFICATION SUCH AS MOLD NUMBER, MOLD CAVITY NUMBER AND/OR MANUFACTURING LOCATION.

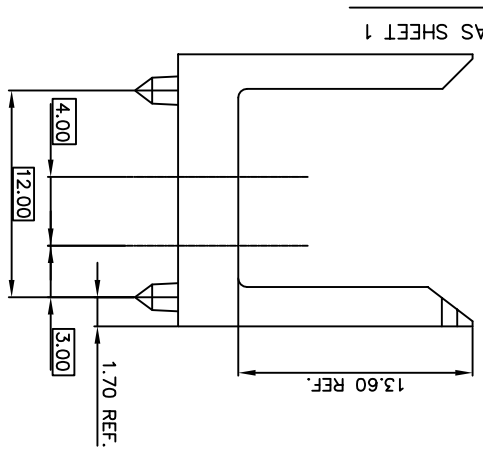


mat'l. code	SEE NOTES	ISO 1302	surface tolerance unless otherwise specified	ISO 1101	ISO 406	projection	product family	METRAL ACC
litr	ec'n no	dr	date	tolerances unless otherwise specified	MM	title	12mm MINI-HYBRID HEADER HOUSING	
H	V20777	CGD	4/23/02	linear	MM	scale	1:1	
J	V21256	CGD	6/24/02	angles	MM	tolerance	0.00±.0051	
K	V21707	TAB	10/30/02	linear	MM	tolerance	0.00±.0051	
L	J03-0127	PJ	01/03/04	linear	MM	tolerance	0.00±.0051	
M	M06-0055	MHT	2/01/06	linear	MM	tolerance	0.00±.0051	
N	M06-0277	MHT	7/22/06	linear	MM	tolerance	0.00±.0051	
P	DG10-0263	TER	2010-07-15	linear	MM	tolerance	0.00±.0051	
revision	revision	revision	revision	revision	revision	revision	revision	revision
sheet	sheet	sheet	sheet	sheet	sheet	sheet	sheet	sheet
1	2	3	4	5	6	7	8	9
P	P	P	P	P	P	P	P	P

PRODUCT NUMBER  
88913-111LF

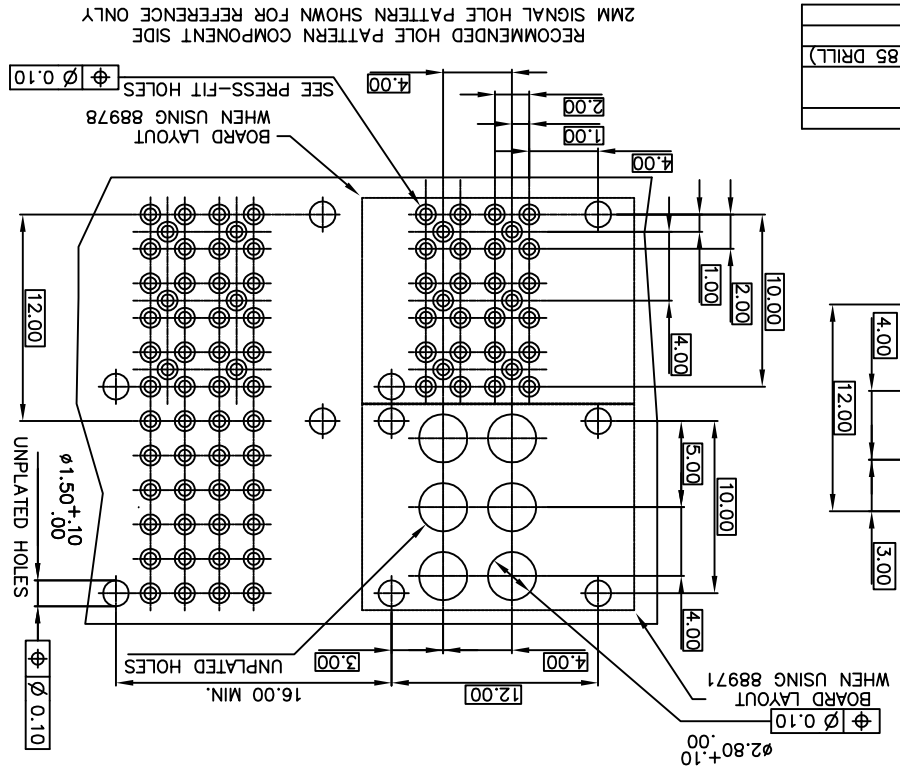


PRESS-FIT HOLES	
HOLE DIAMETER	0.65 - 0.80
AFTER PLATING	0.65 - 0.80
DRILLED HOLE	0.81 - 0.86 (0.85 DRILL)
COPPER PLATING	0.025 MIN.
TIN PLATING	0.005 - 0.015



- NOTES:
1. MATERIAL: LCP, 30% GLASS FILLED  
COLOR: NATURAL  
FLAME RETARDANT ACC. UL 94-V0
  2. THE -111LF AND -121LF (SHEET 3)  
HOUSING IS TO BE USED  
WITH THE PRESS-FIT TO BOARD  
MINI-COAX INSERT, 88978-001LF OR  
MINI-COAX PLUG/PLUG COUPLERS,  
88971-002LF.

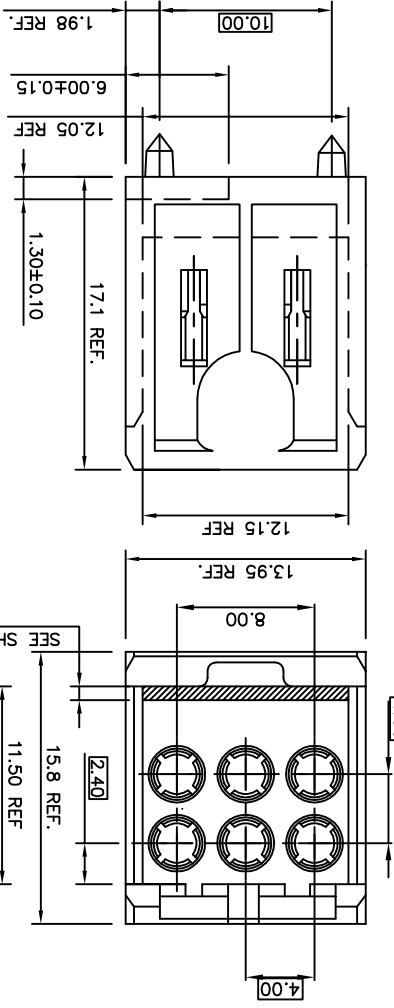
3. PART NUMBER WITH "LF" SUFFIX AT THE END IS LEAD FREE.
4. THIS PRODUCT MEETS EUROPEAN UNION DIRECTIVES AND OTHER  
COUNTRY REGULATION AS DESCRIBED IN GS-22-008.
5. THE HOUSING WILL WITHSTAND EXPOSURE TO 260°C PEAK  
TEMPERATURE FOR 15 SECONDS IN A WAVE SOLDER APPLICATION  
WITH A 1.5mm MINIMUM THICK CIRCUIT BOARD OR FOR 10-20  
SECONDS IN A CONVECTION, INFRARED OR VAPOR PHASE FLOW  
OVEN. SEE APPLICATION NOTES/PROCEDURES IF THEY ARE AVAILABLE.



mat'l. code	SEE NOTES	ISO 1302	ISO 406	ISO 1101	projection	product family	METRAL ACC
litr	ecn no	dr	date	tolerances unless otherwise specified	title	12mm MINI-HYBRID HEADER HOUSING	
P	angles	linear	0±.2	0.00±.0051	scale	1:1	
sheet	revision	sheet	index	revision	sheet	index	

dr	S.STONER	6/11/92
engr	R.DOURICH	6/11/92
chr	S.STONER	6/11/92
appd	S.STONER	6/11/92

PRODUCT NUMBER  
88913-121LF

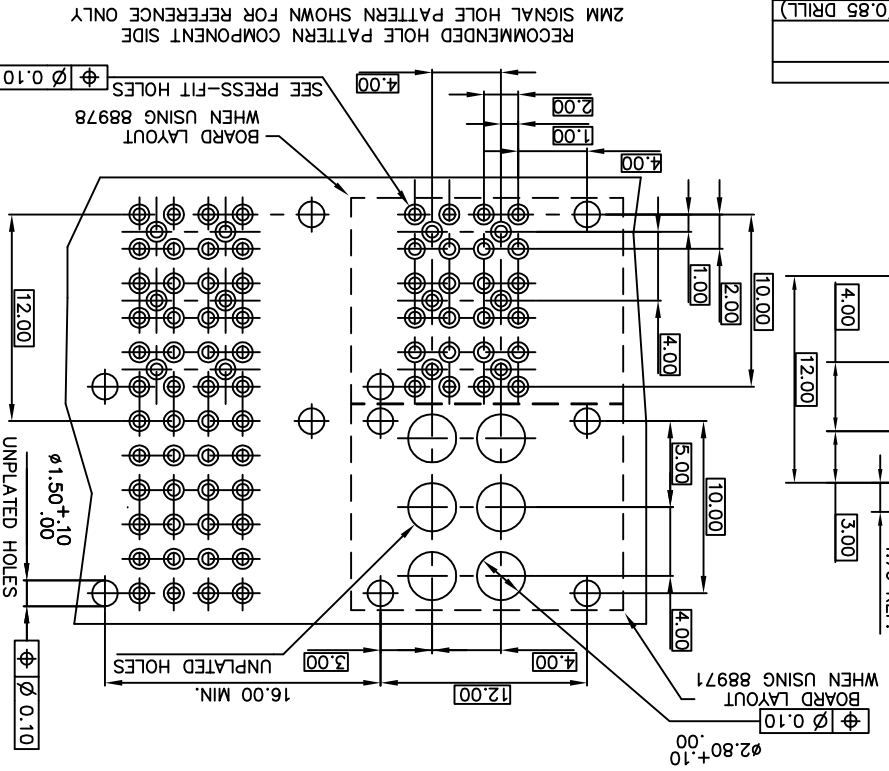


NOTES:  
 1. MATERIAL: LCP, 30% GLASS FILLED, FLAME RETARDANT ACC. UL 94-V0  
 COLOR: NATURAL  
 2. THE -111LF AND -121LF (SHEET 3) HOUSING IS TO BE USED WITH THE PRESS-FIT TO BOARD MINI-COAX INSERT, 88978-001LF OR MINI-COAX PLUG/PLUG COUPLERS, 88971-002LF.

HOLE DIAMETER	AFTER PLATING	DRILLED HOLE	COPPER PLATING	TIN PLATING
0.65 - 0.80	0.81 - 0.86 (0.85 DRILL)	0.025 MIN.	0.005 - 0.015	

PRESS-FIT HOLES

③ PART NUMBER WITH "L" SUFFIX AT THE END IS LEAD FREE.  
 4. THIS PRODUCT MEETS EUROPEAN UNION DIRECTIVES AND OTHER COUNTRY REGULATION AS DESCRIBED IN GS-22-008.  
 5. THE HOUSING WILL WITHSTAND EXPOSURE TO 260°C PEAK TEMPERATURE FOR 15 SECONDS IN A WAVE SOLDER APPLICATION WITH A 1.5mm MINIMUM THICK CIRCUIT BOARD OR FOR 10-20 SECONDS IN A CONVECTION, INFRA-RED OR VAPOR PHASE REFLOW OVEN. SEE APPLICATION NOTES/PROCEDURES IF THEY ARE AVAILABLE.



mat'l. code	SEE NOTES	ISO 1302	ISO 15046	ISO 1101	projection	product family	product family
	surface	ISO 1302	ISO 15046	ISO 1101	MM	12mm MINI-HYBRID	METRAL ACC
	tolerances unless otherwise specified				angles	12mm MINI-HYBRID	METRAL ACC
					linear	12mm MINI-HYBRID	METRAL ACC
					0.25	12mm MINI-HYBRID	METRAL ACC
					0.00±.13	12mm MINI-HYBRID	METRAL ACC
					0.00±.0051	12mm MINI-HYBRID	METRAL ACC
					scale 1:1	12mm MINI-HYBRID	METRAL ACC
					type	12mm MINI-HYBRID	METRAL ACC
					Product Customer Drawing	12mm MINI-HYBRID	METRAL ACC

sheet	revision	index	sheet
1	1	1	1
2	1	2	2
3	1	3	3
4	1	4	4
5	1	5	5
6	1	6	6

## X-ON Electronics

Largest Supplier of Electrical and Electronic Components

*Click to view similar products for [High Speed/Modular Connectors](#) category:*

*Click to view products by [Amphenol](#) manufacturer:*

Other Similar products are found below :

[2332816-1](#) [89006-1137LF](#) [650827-1](#) [65762-001LF](#) [73474-201LF](#) [74040-1346](#) [74075-0267](#) [1410191-1](#) [1410337-1](#) [1410368-3](#) [1410964-2](#)  
[1410367-3](#) [1410971-4](#) [1467833-1](#) [2000877-1](#) [2000878-1](#) [2041314-1](#) [2065387-1](#) [2187307-1](#) [2187462-1](#) [2226278-6](#) [KA81-07](#) [91290-101LF](#)  
[163P](#) [1934290-1](#) [2000875-1](#) [2065917-1](#) [2102736-2](#) [FSR-40](#) [2169868-2](#) [2226279-2](#) [22354-8](#) [437-5040-000](#) [5-1393565-0](#) [532449-3](#) [532803-](#)  
[2](#) [34745-0001](#) [0736440217](#) [1-1393708-5](#) [72388-0021LF](#) [73774-1000](#) [532939-1](#) [5-531355-3](#) [5532901-3](#) [85838-180LF](#)  
[HM1S43TRR460H6PLF](#) [0760205010](#) [1-966831-4](#) [3-1469268-7](#) [77427-121LF](#)